

REMON  
41047

# GRANT COUNTY U.S. PUBLIC LAND SURVEY MONUMENT RECORD

INSTRUCTIONS: THIS RECORD SHALL SHOW THE LOCATION OF THE CORNER AND SHALL INCLUDE ALL OF THE FOLLOWING ELEMENTS (A THROUGH I).

(A) IDENTIFY THE CORNER AS REFERENCED TO THE U.S. PUBLIC LAND SURVEY SYSTEM

■ = CORNER MONUMENT RESTORED

WITNESSES TO CORNER LOCATION:

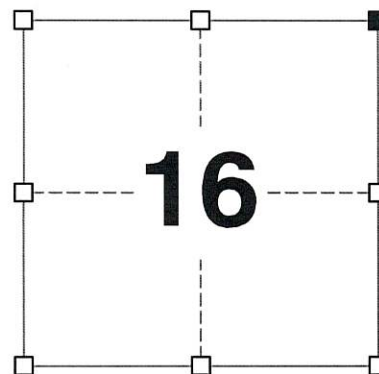
STEVE A. ALT  
TYLER D. ATKINSON  
JAMIE L. BRANDT

GEOGRAPHIC COORDINATES,  
NAD 83 (2011) ADJUSTMENT:

LATITUDE: 42° 49' 38.82639"  
LONGITUDE: 90° 29' 11.34505"

WISCONSIN COORDINATE REFERENCE SYSTEM (WISCRS),  
GRANT COUNTY, NAD 83 (2011) ADJUSTMENT:

NORTHING: 516,318.150  
EASTING: 879,109.612



SECTION 16  
TOWNSHIP 4 NORTH, RANGE 1 WEST  
TOWN OF LIMA

(B) DESCRIBE ANY RECORD EVIDENCE, MONUMENT EVIDENCE, OCCUPATIONAL EVIDENCE, TESTIMONIAL EVIDENCE OR ANY OTHER MATERIAL EVIDENCE YOU CONSIDERED, AND WHETHER THE MONUMENT WAS FOUND OR PLACED.

I COULD FIND NO MONUMENTS FROM THE ORIGINAL GOVERNMENT SURVEY. I RECOVERED AN ORIGINAL BEARING TREE ESTABLISHED BY SAMPSON AS WELL AS THE NO. 8 REBAR WITH A GRANT COUNTY ALUMINUM CAP REPORTED BY AARON AUSTIN. I ACCEPTED THIS LOCATION AS THE BEST AVAILABLE EVIDENCE OF THE ORIGINAL GOVERNMENT CORNER AND REMONUMENTED IT WITH A 2" x 30" STAINLESS STEEL PIPE WITH A 4" GRANT COUNTY BRASS CAP.

(C) IN THE PLAN VIEW DRAWING BELOW, PROVIDE REFERENCE TIES TO AT LEAST 4 WITNESS MONUMENTS. WITNESS MONUMENTS SHALL BE MADE OF CONCRETE, NATURAL STONE, IRON, BEARING TREES OR ANY OTHER EQUALLY DURABLE MATERIAL. DEPICT THE RELEVANT MONUMENTS AND REFERENCE TIES WITH SUFFICIENT DETAIL TO ENABLE ACCURATE RELOCATION OF THE CORNER IF THE CORNER MONUMENT IS DISTURBED.

(D)

**LEGEND:**

- SET 2" x 30" STAINLESS STEEL PIPE w/ 4" GRANT COUNTY BRASS CAP
- 3/4" x 24" IRON ROD SET AS ACCESSORY
- "SURVEY MARKER" SIGN 5' +/- WEST OF MONUMENT



PASTURE

PASTURE



N07°48'40"W, 16.87'  
1' WEST OF FENCE CORNER

(N74°55'37"E), (106.00')  
N74°53'39"E, 105.96'  
REPLACED NO. 4 REBAR  
6" SOUTH OF FENCE LINE

N85°49'17"W, 51.44'  
4' SOUTH OF 60" BLACK OAK  
2' NORTH OF FENCE LINE

NORTHEAST  
CORNER  
SECTION 16  
T4N, R1W

GREENWOOD ROAD

PASTURE

FIELD

S15°04'06"E, 53.19'  
5' OFF OF ROAD EDGE

CORNER NO. 47

(E) DESCRIBE ANY MATERIAL DISCREPANCY BETWEEN THE LOCATION OF THE CORNER AS RESTORED OR REESTABLISHED AND THE LOCATION OF THAT CORNER AS PREVIOUSLY RESTORED OR REESTABLISHED BY DISTANCE AND DIRECTION. SHOW THE DISCREPANCY ON THE PLAN VIEW DRAWING UNDER (D), ABOVE. SHOW THE DISTANCES BETWEEN THE CORNER AS PREVIOUSLY RESTORED OR REESTABLISHED AND (1) THE CORNER AS RESTORED OR REESTABLISHED, AND (2) TO AT LEAST 2 OF THE WITNESS MONUMENTS SHOWN ON THE DRAWING IN (D) ABOVE.

N/A

(F) WAS THE CORNER RESTORED THROUGH ACCEPTANCE OF (1) AN OBLITERATED EVIDENCE LOCATION, OR (2) A FOUND PERPETUATED LOCATION?

(2) A FOUND PERPETUATED LOCATION.

(G&H) WAS THE CORNER REESTABLISHED THROUGH LOST CORNER PROPORTIONATE METHODS? IF SO, SHOW THE METHOD, INCLUDING THE DIRECTIONS AND DISTANCES TO OTHER PUBLIC LAND SURVEY CORNERS USED AS EVIDENCE OR USED FOR PROPORTIONING IN DETERMINING THE CORNER LOCATION.

N/A

CORNER HISTORY

THE ORIGINAL GOVERNMENT CORNER WAS ESTABLISHED BY ROBERT CLARK JR. IN THE FIRST QUARTER OF 1833.

IN A SURVEY DATED 6 MAY 1847, GEORGE STUNTZ VISITED THE CORNER.

IN A SURVEY DATED 3 MARCH 1852, C.J. OVERTON VISITED THE CORNER.

IN A SURVEY DATED 22 AUGUST 1854, C.J. OVERTON VISITED THE CORNER.

IN A SURVEY DATED 7 MARCH 1892, CHARLES SAMPSON SET THE CORNER USING THE NEAREST ADJACENT CORNER AND ESTABLISHED TWO NEW BEARING TREES.

IN A PLAT OF SURVEY DATED 12 MAY 1998, LARRY AUSTIN REPORTED SETTING A 1" X 30" REBAR AT THE CORNER.

IN A PLAT OF SURVEY AND SUBSEQUENT TIE SHEET DATED 20 FEBRUARY 2014, AARON AUSTIN REPORTED SETTING A NO. 8 X 30" REBAR WITH A GRANT COUNTY ALUMINUM CAP AT THE CORNER.

(I) I, JAY P. ADAMS, P.L.S. - 2879, CERTIFY THAT THE CORNER LOCATION SHOWN ON THIS RECORD WAS DETERMINED BY ME OR UNDER MY DIRECTION AND CONTROL AND THAT THIS U.S. PUBLIC LAND SURVEY MONUMENT RECORD IS CORRECT AND COMPLETE TO THE BEST OF MY KNOWLEDGE AND BELIEF.



SIGNATURE

24 SEPTEMBER 2022

DATE

AFFIX LAND SURVEYOR SEAL



# U.S. PUBLIC LAND SURVEY MONUMENT RECORD - GRANT COUNTY, WI

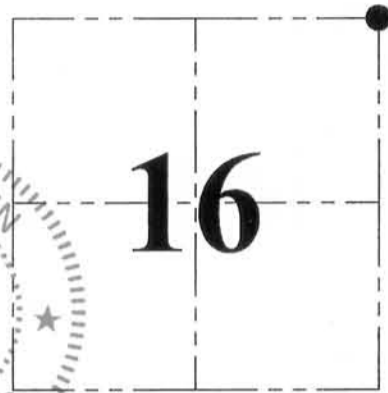
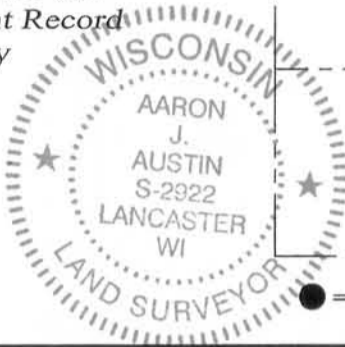
Section 16, Town 4 North Range 1 West, Town of Lima

**CERTIFICATE:**

I, Aaron J. Austin, do hereby certify that the corner location on this record was determined by me and/or under my direct supervision and that this U.S. Public Land Survey Monument Record is correct and complete to the best of my knowledge and belief.

Dated this 20th day of February, 2014.

*Aaron J. Austin*  
 Aaron J. Austin, S-2922



● = CORNER LOCATION

**HISTORY OF CORNER ESTABLISHMENT:**

- 1833-Original corner by Robert Clark.
- 1847-Geo. Stuntz tied to the corner on a survey in Book B, Page 57.
- 1854-Overton shown the corner on a survey in Book B, Page 354.
- 1892-Charles Sampson reset the corner in Book D, Page 204.
- 1892-Charles Sampson tied to the corner in Book D, Page 205.
- 1998-Larry Austin tied to the corner on a survey in Book 3, Page 25.
- 2006-Larry Austin tied to the corner of Certified Survey Map No. 1251.

**DESCRIPTION OF CORNER EVIDENCE FOUND:**

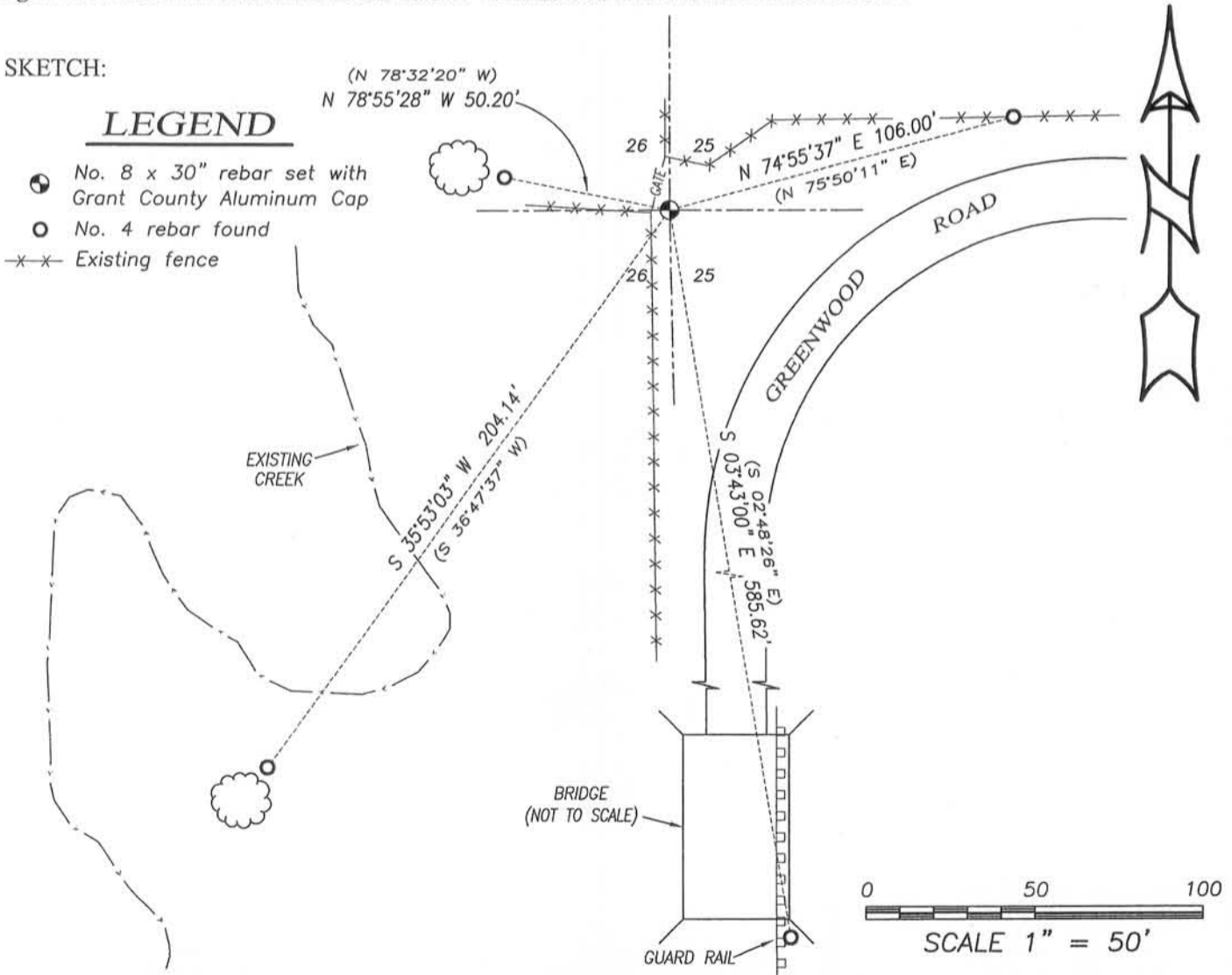
Larry Austin set a No. 8 rebar with a Grant County Aluminum Cap and filed a tie sheet dated 3-16-1998 at this corner location. I was not able to recover the No. 8 rebar. I reset the corner based upon the found existing ties. This location was verified by E.D.M. and G.P.S. methods.

**DESCRIPTION OF CORNER AND WITNESS MONUMENTS, references and accessories used to perpetuate the original or re-established location of this corner. Witnesses to corner location Shane Austin.**

**SKETCH:**

**LEGEND**

- No. 8 x 30" rebar set with Grant County Aluminum Cap
- No. 4 rebar found
- x-x- Existing fence



**Austin Engineering LLC**  
 austinengineeringllc.com  
 4211 HWY 81 E, LANCASTER, WI 53813  
 PHONE: 608-723-6363 FAX: 608-723-6702

JOB NO: 14s012  
 G:\14s012  
 H:\TIE\T4NR1W\47(2)

FIELDBOOK: TDSR  
 DRAWN BY: AJ AUSTIN  
 CREW: SW AUSTIN

# GRANT COUNTY CERTIFIED LAND CORNER

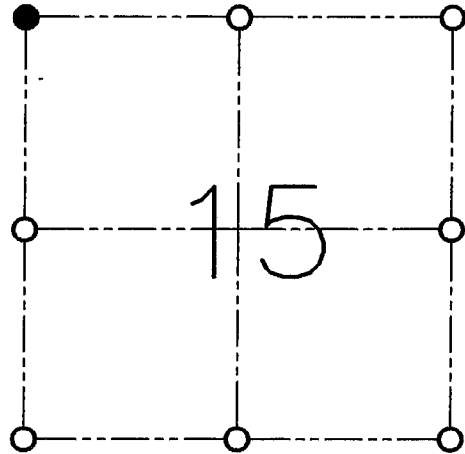
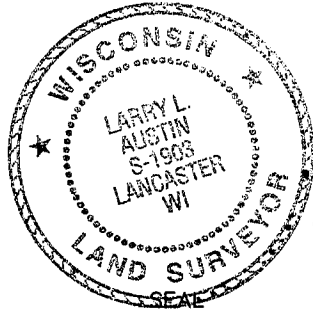
CORNER NO. 47

**CERTIFICATE:**

I, LARRY L. AUSTIN, DO HEREBY CERTIFY THAT ON SIXTEENTH DAY OF FEBRUARY, 1998, I FOUND EVIDENCE OF THE NORTHWEST CORNER OF SECTION 15, TOWN 4 NORTH, RANGE 1 WEST, OF THE FOURTH PRINCIPAL MERIDIAN, AND I RE-ESTABLISHED SAID CORNER ACCORDING TO THE WISCONSIN STATUTES AS SHOWN AND DESCRIBED HEREON.

DATED THIS SIXTEENTH DAY OF MARCH, 1998

*Larry L. Austin*  
LARRY L. AUSTIN S-1903



● = CORNER LOCATION

**NORTHWEST CORNER OF  
SECTION 15, T 4 N R 1 W  
TOWN OF LIMA**

**HISTORY OF ORIGINAL CORNER ESTABLISHMENT:**

CORNER WAS SET IN 1833 BY ROBERT CLARK.  
IN 1892 SAMPSON LOCATED THE CORNER.

**DESCRIPTION OF CORNER EVIDENCE FOUND:**

I FOUND A BEARING TREE TIED TO BY SAMPSON. I SET THE CORNER BASED ON THIS TREE. VERIFIED THIS LOCATION USING E.D.M. METHODS.

**DESCRIPTION OF CORNER AND WITNESS MONUMENTS, REFERENCES AND ACCESSORIES USED TO PERPETUATE THE ORIGINAL OR RE-ESTABLISHED LOCATION OF THIS CORNER:**

**WITNESS TO THE CORNER LOCATION:**

BOBBY SEDGWICK  
SHELBY BLINDERT

**SKETCH:**

