

GRANT COUNTY U.S. PUBLIC LAND SURVEY MONUMENT RECORD

INSTRUCTIONS: THIS RECORD SHALL SHOW THE LOCATION OF THE CORNER AND SHALL INCLUDE ALL OF THE FOLLOWING ELEMENTS (A THROUGH I).

(A) IDENTIFY THE CORNER AS REFERENCED TO THE U.S. PUBLIC LAND SURVEY SYSTEM

■ = CORNER MONUMENT RESTORED

WITNESSES TO CORNER LOCATION:

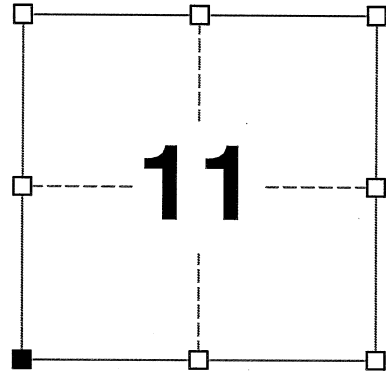
STEVE A. ALT
PAIGE O. JELINEK

GEOGRAPHIC COORDINATES,
NAD 83 (2011) ADJUSTMENT:

LATITUDE: 42° 49' 39.21879"
LONGITUDE: 90° 28' 00.36885"

WISCONSIN COORDINATE REFERENCE SYSTEM (WISCRS),
GRANT COUNTY, NAD 83 (2011) ADJUSTMENT:

NORTHING: 516,378.172
EASTING: 884,398.747



SECTION 11
TOWNSHIP 4 NORTH, RANGE 1 WEST
TOWN OF LIMA

(B) DESCRIBE ANY RECORD EVIDENCE, MONUMENT EVIDENCE, OCCUPATIONAL EVIDENCE, TESTIMONIAL EVIDENCE OR ANY OTHER MATERIAL EVIDENCE YOU CONSIDERED, AND WHETHER THE MONUMENT WAS FOUND OR PLACED.

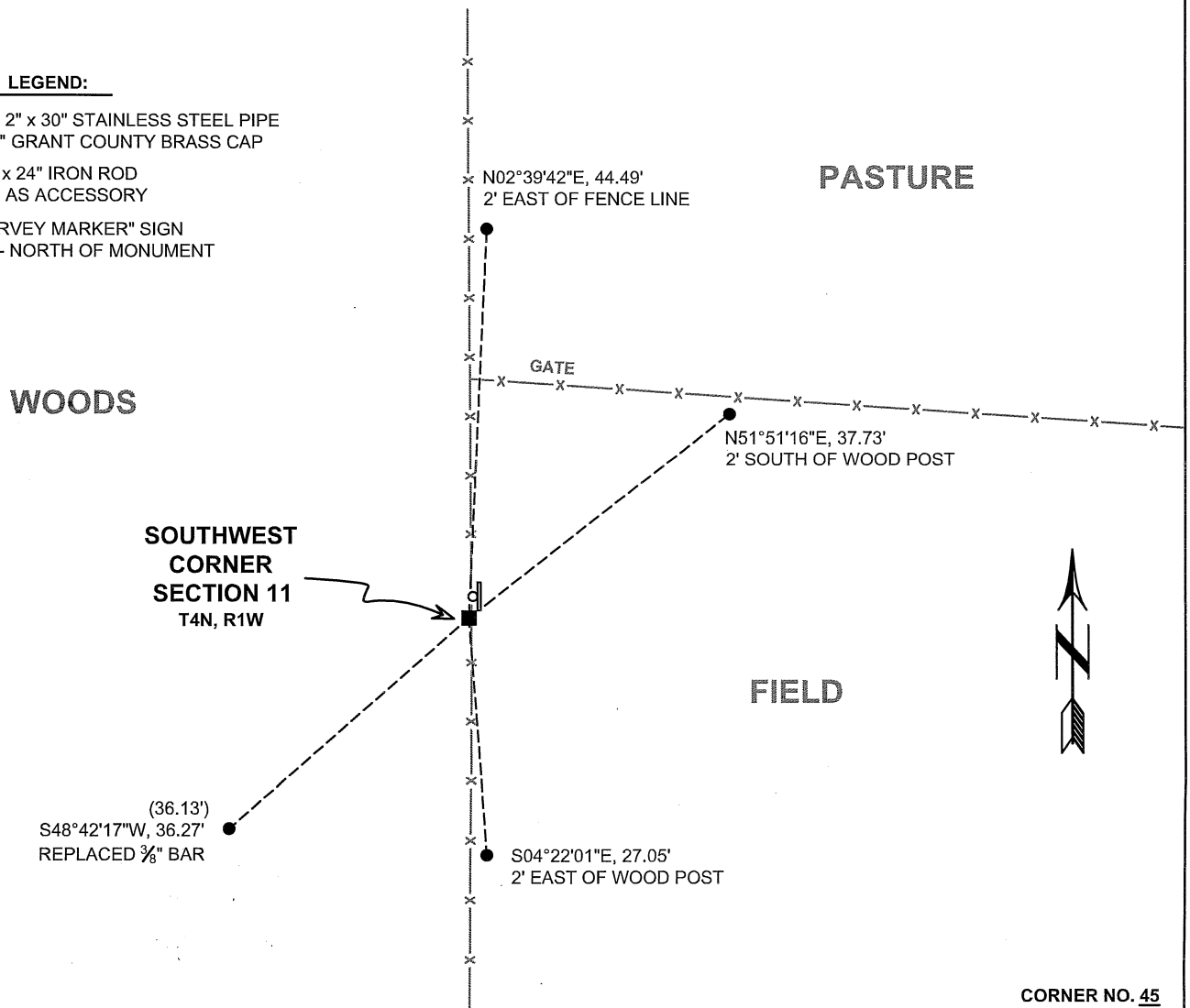
I COULD FIND NO MONUMENTS OR BEARING TREES FROM THE ORIGINAL GOVERNMENT SURVEY OR THE HISTORIC COUNTY SURVEYOR'S SUBSEQUENT RESURVEYS. I RECOVERED THE GRANT COUNTY ALUMINUM MONUMENT REPORTED BY BOWDEN. I ACCEPTED THIS LOCATION AS THE BEST AVAILABLE EVIDENCE OF THE ORIGINAL GOVERNMENT CORNER AND REMONUMENTED IT WITH A 2" x 30" STAINLESS STEEL PIPE WITH A 4" GRANT COUNTY BRASS CAP.

(C) IN THE PLAN VIEW DRAWING BELOW, PROVIDE REFERENCE TIES TO AT LEAST 4 WITNESS MONUMENTS. WITNESS MONUMENTS SHALL BE MADE OF CONCRETE, NATURAL STONE, IRON, BEARING TREES OR ANY OTHER EQUALLY DURABLE MATERIAL. DEPICT THE RELEVANT MONUMENTS AND REFERENCE TIES WITH SUFFICIENT DETAIL TO ENABLE ACCURATE RELOCATION OF THE CORNER IF THE CORNER MONUMENT IS DISTURBED.

(D)

LEGEND:

- SET 2" x 30" STAINLESS STEEL PIPE w/ 4" GRANT COUNTY BRASS CAP
- 3/4" x 24" IRON ROD SET AS ACCESSORY
- "SURVEY MARKER" SIGN 1' +/- NORTH OF MONUMENT



41045

(E) DESCRIBE ANY MATERIAL DISCREPANCY BETWEEN THE LOCATION OF THE CORNER AS RESTORED OR REESTABLISHED AND THE LOCATION OF THAT CORNER AS PREVIOUSLY RESTORED OR REESTABLISHED BY DISTANCE AND DIRECTION. SHOW THE DISCREPANCY ON THE PLAN VIEW DRAWING UNDER (D), ABOVE. SHOW THE DISTANCES BETWEEN THE CORNER AS PREVIOUSLY RESTORED OR REESTABLISHED AND (1) THE CORNER AS RESTORED OR REESTABLISHED, AND (2) TO AT LEAST 2 OF THE WITNESS MONUMENTS SHOWN ON THE DRAWING IN (D) ABOVE.

N/A

(F) WAS THE CORNER RESTORED THROUGH ACCEPTANCE OF (1) AN OBLITERATED EVIDENCE LOCATION, OR (2) A FOUND PERPETUATED LOCATION?

(2) A FOUND PERPETUATED LOCATION.

(G&H) WAS THE CORNER REESTABLISHED THROUGH LOST CORNER PROPORTIONATE METHODS? IF SO, SHOW THE METHOD, INCLUDING THE DIRECTIONS AND DISTANCES TO OTHER PUBLIC LAND SURVEY CORNERS USED AS EVIDENCE OR USED FOR PROPORTIONING IN DETERMINING THE CORNER LOCATION.

N/A

CORNER HISTORY

THE ORIGINAL GOVERNMENT CORNER WAS ESTABLISHED BY ROBERT CLARK JR. IN THE FIRST QUARTER OF 1833.

IN SURVEYS DATED 4 JANUARY 1855, 30 MARCH 1855, AND 23 MAY 1855, C.J. OVERTON FOUND THE ORIGINAL CORNER.

IN A SURVEY DATED 7 MARCH 1892, CHARLES SAMPSON VISITED THE CORNER.

IN A PLAT OF SURVEY DATED 3 DECEMBER 1986, BRUCE BOWDEN REPORTED FINDING A GRANT COUNTY ALUMINUM MONUMENT AT THE CORNER.

IN A PLAT OF SURVEY DATED 3 OCTOBER 1988, DOUGLAS MALLIET REPORTED FINDING A GRANT COUNTY ALUMINUM MONUMENT AT THE CORNER.

IN A SURVEY PLAT DATED 20 SEPTEMBER 1994 AND SUBSEQUENT TIE SHEET DATED 6 OCTOBER 1994, LARRY AUSTIN REPORTED FINDING A GRANT COUNTY ALUMINUM MONUMENT AT THE CORNER.

SINCE 12 MAY 1998, THIS CORNER HAS BEEN USED IN NUMEROUS SURVEYS NOTING A GRANT COUNTY ALUMINUM MONUMENT AT THE CORNER.

AFFIX LAND SURVEYOR SEAL

(I) I, JAY P. ADAMS, P.L.S. - 2879, CERTIFY THAT THE CORNER LOCATION SHOWN ON THIS RECORD WAS DETERMINED BY ME OR UNDER MY DIRECTION AND CONTROL AND THAT THIS U.S. PUBLIC LAND SURVEY MONUMENT RECORD IS CORRECT AND COMPLETE TO THE BEST OF MY KNOWLEDGE AND BELIEF.

SIGNATURE

28 OCTOBER 2022

DATE



GRANT COUNTY

Survey Monument Record

TYPE OF MONUMENT GRANT COUNTY ALUMINUM MON

STATE PLANE COORDINATES: N
E

ELEVATION — M.S.L. DATUM:

THETA ANGLE:

FIELD BOOK:

PAGE

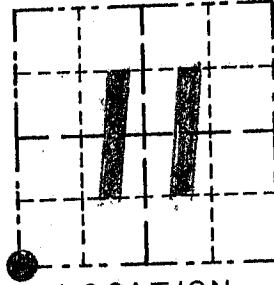
CORNER NO. 45

SECTION 11

TOWN 4N

RANGE 1W

SW CORNER



LOCATION
(Indicated by "●")



BASIS FOR MONUMENT LOCATION

(Use reverse side if necessary)

Show info such as: History of corner, with reference to Vol. and pg. dates, surveyor; exact description of monument replaced; if location computed, by taped or EDM traverse; landowner, remarks, etc.

SEAL:

NO RECORD OF CORNER FOUND
SINCE ORIGINAL SURVEYS; ACCEPTED
N-S FENCE FOR E-W LOCATION,
& PROJECTION OF WATERFALL ROAD
FOR N-S LOCATION VERIFIED THIS
LOCATION BY EDM TRAVERSE OF
THE AREA.



CERTIFIED CORRECT

Larry A. Buchi
Registered Land Surveyor

DATE: 10/6/94

TIE SKETCH

Show at least three (3) ties and monument

