

Remon
41042

GRANT COUNTY U.S. PUBLIC LAND SURVEY MONUMENT RECORD

INSTRUCTIONS: THIS RECORD SHALL SHOW THE LOCATION OF THE CORNER AND SHALL INCLUDE ALL OF THE FOLLOWING ELEMENTS (A THROUGH I).

(A) IDENTIFY THE CORNER AS REFERENCED TO THE U.S. PUBLIC LAND SURVEY SYSTEM

■ = CORNER MONUMENT RESTORED

WITNESSES TO CORNER LOCATION:

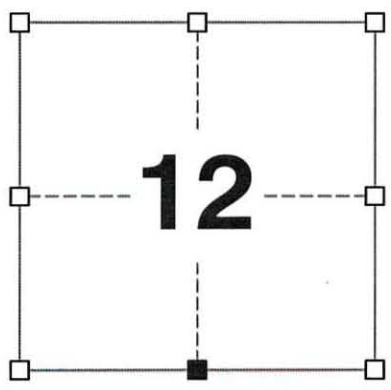
TODD C. PATTON
TYLER D. ATKINSON

GEOGRAPHIC COORDINATES,
NAD 83 (2011) ADJUSTMENT:

LATITUDE: 42° 49' 39.57406"
LONGITUDE: 90° 26' 12.89123"

WISCONSIN COORDINATE REFERENCE SYSTEM (WISCRS),
GRANT COUNTY, NAD 83 (2011) ADJUSTMENT:

NORTHING: 516,447.227
EASTING: 892,408.033



SECTION 12
TOWNSHIP 4 NORTH, RANGE 1 WEST
TOWN OF LIMA

(B) DESCRIBE ANY RECORD EVIDENCE, MONUMENT EVIDENCE, OCCUPATIONAL EVIDENCE, TESTIMONIAL EVIDENCE OR ANY OTHER MATERIAL EVIDENCE YOU CONSIDERED, AND WHETHER THE MONUMENT WAS FOUND OR PLACED.

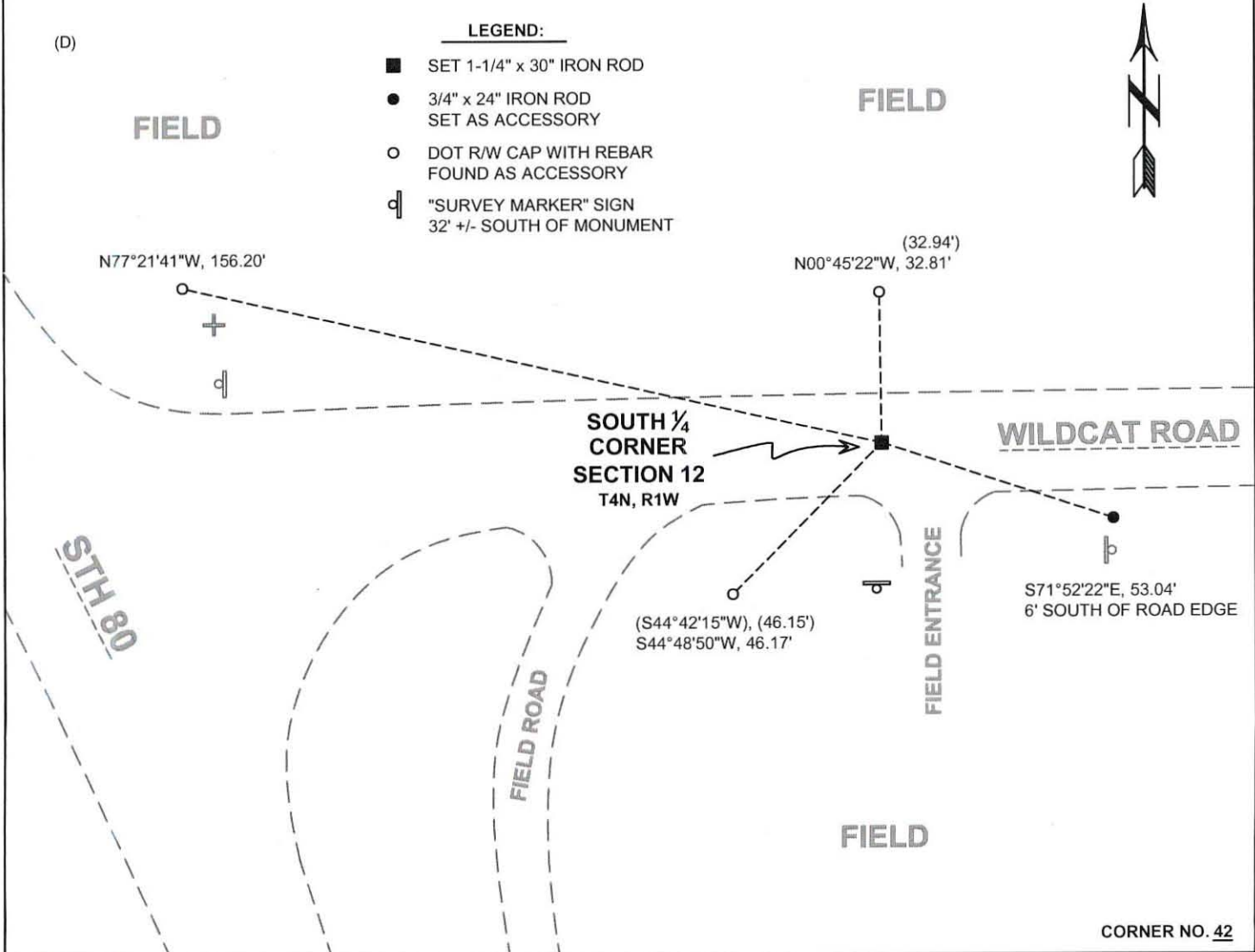
I COULD FIND NO MONUMENTS OR BEARING TREES FROM THE ORIGINAL GOVERNMENT SURVEY. I RECOVERED THE MAG NAIL REPORTED BY ALT. I ACCEPTED THIS LOCATION AS THE BEST AVAILABLE EVIDENCE OF THE ORIGINAL GOVERNMENT CORNER AND REMONUMENTED IT WITH A 1-1/4" x 30" IRON ROD.

(C) IN THE PLAN VIEW DRAWING BELOW, PROVIDE REFERENCE TIES TO AT LEAST 4 WITNESS MONUMENTS. WITNESS MONUMENTS SHALL BE MADE OF CONCRETE, NATURAL STONE, IRON, BEARING TREES OR ANY OTHER EQUALLY DURABLE MATERIAL. DEPICT THE RELEVANT MONUMENTS AND REFERENCE TIES WITH SUFFICIENT DETAIL TO ENABLE ACCURATE RELOCATION OF THE CORNER IF THE CORNER MONUMENT IS DISTURBED.

(D)

LEGEND:

- SET 1-1/4" x 30" IRON ROD
- 3/4" x 24" IRON ROD SET AS ACCESSORY
- DOT R/W CAP WITH REBAR FOUND AS ACCESSORY
- ⊕ "SURVEY MARKER" SIGN 32' +/- SOUTH OF MONUMENT



41042

(E) DESCRIBE ANY MATERIAL DISCREPANCY BETWEEN THE LOCATION OF THE CORNER AS RESTORED OR REESTABLISHED AND THE LOCATION OF THAT CORNER AS PREVIOUSLY RESTORED OR REESTABLISHED BY DISTANCE AND DIRECTION. SHOW THE DISCREPANCY ON THE PLAN VIEW DRAWING UNDER (D), ABOVE. SHOW THE DISTANCES BETWEEN THE CORNER AS PREVIOUSLY RESTORED OR REESTABLISHED AND (1) THE CORNER AS RESTORED OR REESTABLISHED, AND (2) TO AT LEAST 2 OF THE WITNESS MONUMENTS SHOWN ON THE DRAWING IN (D) ABOVE.

N/A

(F) WAS THE CORNER RESTORED THROUGH ACCEPTANCE OF (1) AN OBLITERATED EVIDENCE LOCATION, OR (2) A FOUND PERPETUATED LOCATION?

(2) A FOUND PERPETUATED LOCATION.

(G&H) WAS THE CORNER REESTABLISHED THROUGH LOST CORNER PROPORTIONATE METHODS? IF SO, SHOW THE METHOD, INCLUDING THE DIRECTIONS AND DISTANCES TO OTHER PUBLIC LAND SURVEY CORNERS USED AS EVIDENCE OR USED FOR PROPORTIONING IN DETERMINING THE CORNER LOCATION.

N/A

CORNER HISTORY

THE ORIGINAL GOVERNMENT CORNER WAS ESTABLISHED BY ROBERT CLARK JR. IN THE FIRST QUARTER OF 1833.

IN A TIE SHEET DATED 30 AUGUST 1993, LARRY AUSTIN REPORTED SETTING A 7/8" X 24" SMOOTH BAR AT THE CORNER.

IN A PLAT OF SURVEY DATED 26 MARCH 2003, LARRY AUSTIN REPORTED FINDING A NO. 6 REBAR AT THE CORNER.

IN A TIE SHEET DATED 10 AUGUST 2005, LARRY AUSTIN REPORTED FINDING A NO. 7 REBAR AT THE CORNER.

IN A PLAT OF SURVEY DATED 4 MAY 2009, LARRY AUSTIN REPORTED FINDING A NO. 7 REBAR AT THE CORNER.

IN A PLAT OF SURVEY DATED 23 SEPTEMBER 2010, AARON AUSTIN REPORTED FINDING A NO. 7 REBAR AT THE CORNER.

IN A PLAT OF SURVEY DATED 22 FEBRUARY 2012, AARON AUSTIN REPORTED FINDING A NO. 7 REBAR AT THE CORNER.

IN A TIE SHEET DATED 21 NOVEMBER 2012, ANTHONY ALT REPORTED SETTING A MAG NAIL AT THE CORNER.

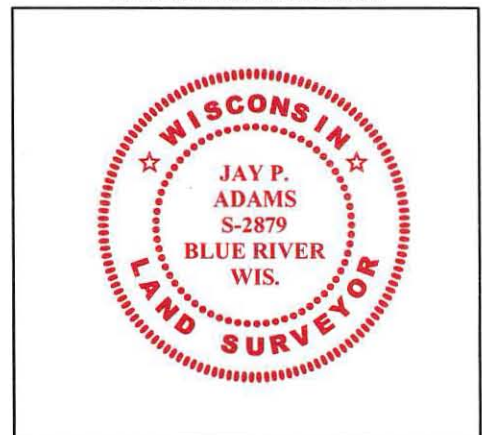
(I) I, JAY P. ADAMS, P.L.S. - 2879, CERTIFY THAT THE CORNER LOCATION SHOWN ON THIS RECORD WAS DETERMINED BY ME OR UNDER MY DIRECTION AND CONTROL AND THAT THIS U.S. PUBLIC LAND SURVEY MONUMENT RECORD IS CORRECT AND COMPLETE TO THE BEST OF MY KNOWLEDGE AND BELIEF.

SIGNATURE

10 MARCH 2020

DATE

AFFIX LAND SURVEYOR SEAL



U.S. PUBLIC LAND SURVEY MONUMENT RECORD

(a) Identify the corner to the U.S. Public Land Survey System.

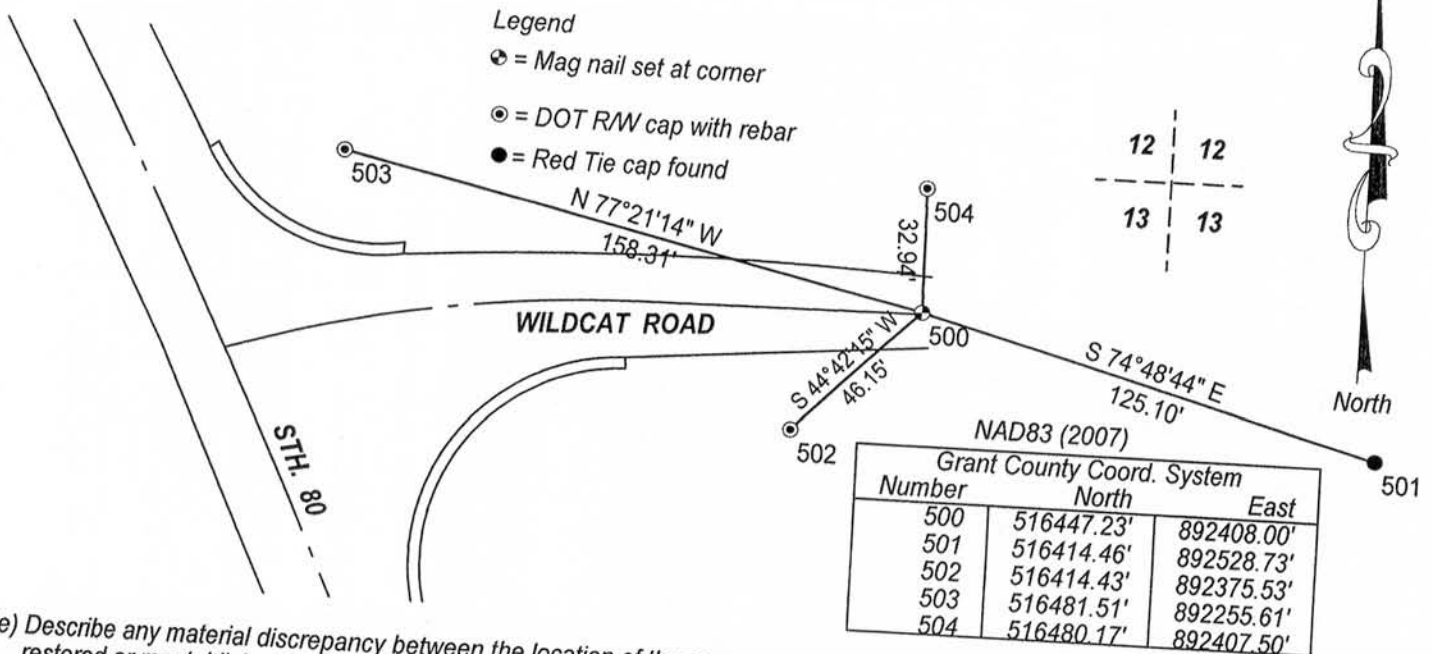
South 1/4 corner of Section 12, Town 4 North, Range 1 West, Lima Township, Grant County, Wisconsin.

(b) Describe any record evidence, occupational evidence, testimonial evidence or any material evidence you considered, and if the monument was found or placed.

I found and accepted a #7 rebar. The rebar is consistent with the location described in WIDOT Project Plat # 5035-00-21 and existing ties. After road construction, I reestablished the corner as shown below.

(c) In the plan view below, provide reference ties to at least 4 witness monuments. (Witness monuments shall be made of concrete, material stone, iron or other durable material) Describe the witness monuments.

(d) Show a plan view drawing depicting the relevant monuments and reference ties which is sufficient in detail to enable accurate relocation of the monument if the corner monument is disturbed. Indicate north.



(e) Describe any material discrepancy between the location of the corner as restored and the location of that corner previously restored or reestablished by distance and direction. Show the discrepancy on the plan view drawing under (d), above. Show the distance between the corner as previously restored or reestablished and (1) the corner as restored or reestablished, and (2) to at least 2 of the witness monuments shown on the drawing above.

No known discrepancy.

(f, g & h) Was the corner restored through:

- (1) Acceptance of an obliterated evidence location, or
- (2) Acceptance of a found perpetuated location, or
- (3) Lost corner proportionate methods? If lost corner methods were used, show the method, including the direction and distance to other Public Land survey corners used as evidence or used for proportioning in determining the corner location.

(2) Acceptance of a found perpetuated location.

(i) I Anthony J. Alt, certify that the corner location shown on this record was determined by me or under my direction and control and that this U.S. Public Land Survey Monument is accurate and complete to the best of my knowledge and belief.



Signature Anthony J. Alt

Date _____

Affix Seal

NOV 21 2012
42

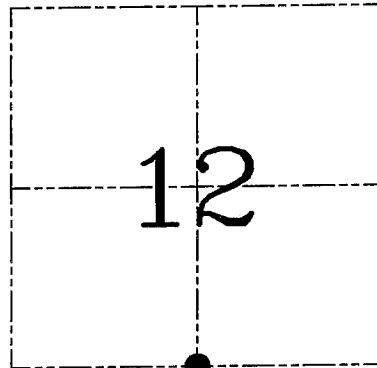
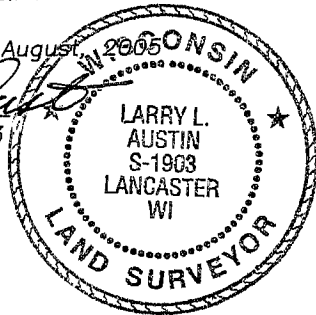
U.S. PUBLIC LAND SURVEY MONUMENT RECORD – GRANT COUNTY, WI
Section 12, Town 4 North Range 1 West, Town of Lima

CERTIFICATE

I, Larry L. Austin, do hereby certify that the corner location on this record was determined by me and/or under my direct supervision and that this U.S. public land survey monument record is correct and complete to the best of my knowledge and belief.

Dated this 10th day of August, 2005

Larry L. Austin
 Larry L. Austin S-1903



● = CORNER LOCATION

HISTORY OF CORNER ESTABLISHMENT

Corner was originally set in 1833 by Clark. I previously tied to the existing No. 7 iron bar on two surveys. No other record of the corner was found.

DESCRIPTION OF CORNER EVIDENCE FOUND

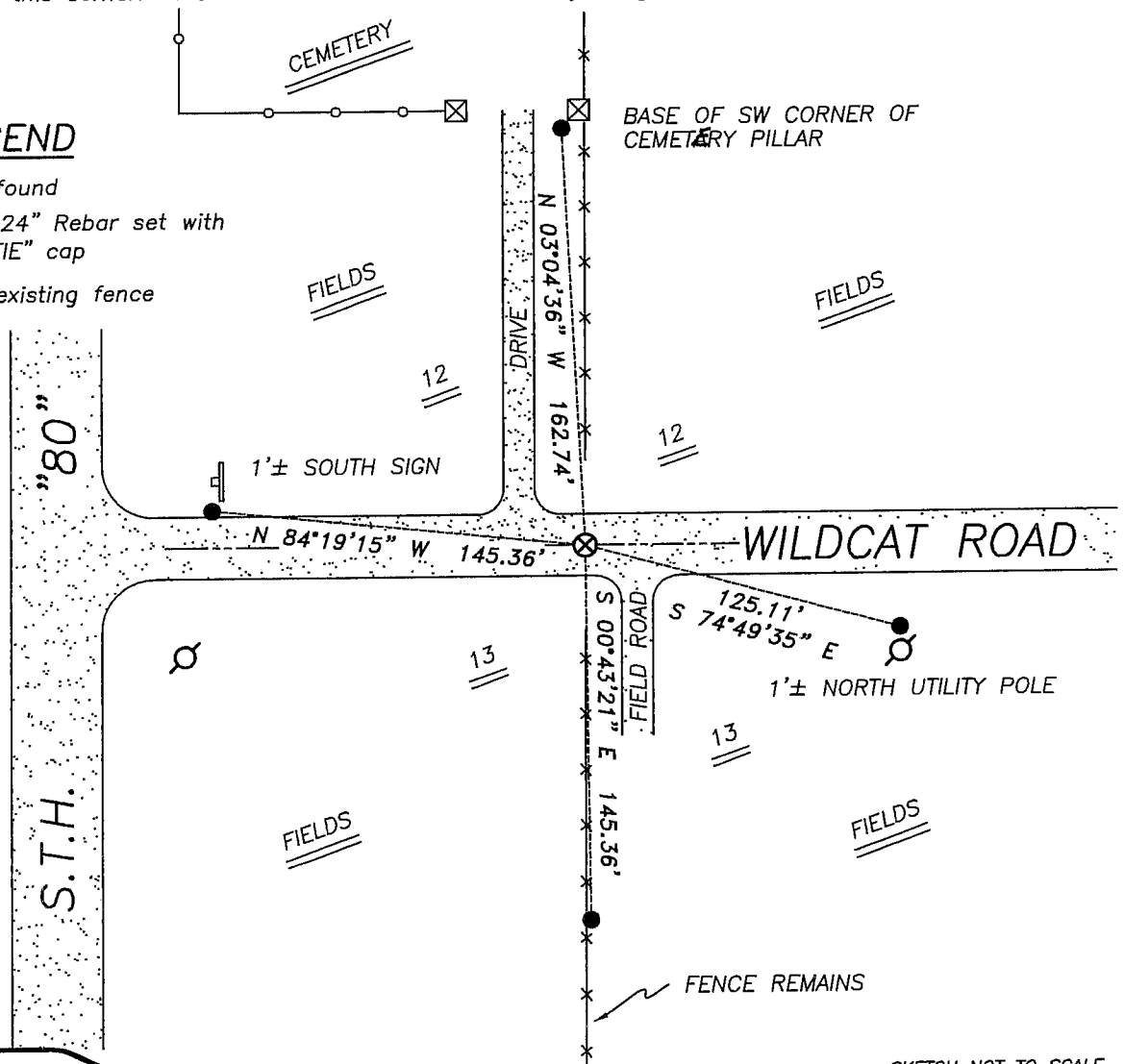
I found the existing No. 7 iron bar and accepted its location after an EDM & GPS traverse of the area.

DESCRIPTION OF CORNER AND WITNESS MONUMENTS, references and accessories used to perpetuate the original or re-established location of this corner. Witnesses to corner location Bobby Sedgwick & Brad Digman & Shane Austin

SKETCH:

LEGEND

- ⊗ No. 7 rebar found
- Number 4 x 24" Rebar set with red plastic "TIE" cap
- x- Approximate existing fence



SKETCH NOT TO SCALE



Austin Engineering LLC

4211 HWY 81 E, LANCASTER, WI 53813
 PHONE 608-723-6363 FAX 608-723-6702

JOB NUMBER 05S050
 FIELDBOOK: TDSR, 2512
 G:\GRANTDOT\T5NR1W
 H:\TIE\T4NR1W\42

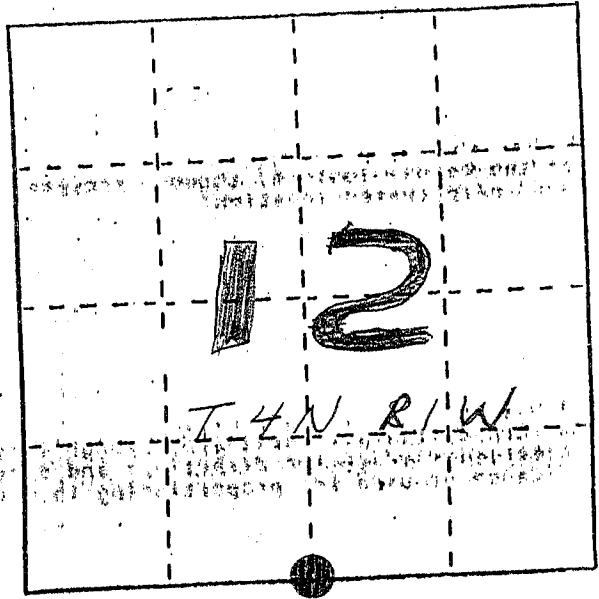
DRAWN BY: SW AUSTIN
 APPROVED: LL AUSTIN

U. S. PUBLIC LAND SURVEY MONUMENT RECORD

INSTRUCTIONS: This record shall show the location of the corner and shall include all of the following nine elements (a through i).

- (a) Identify the corner by reference to the U.S. public land survey system.
 ● = Corner monument restored.

5/4 COR SEC 12 T4N R1W,
 OF THE 4TH P.M. GRANT
 COUNTY WISCONSIN.

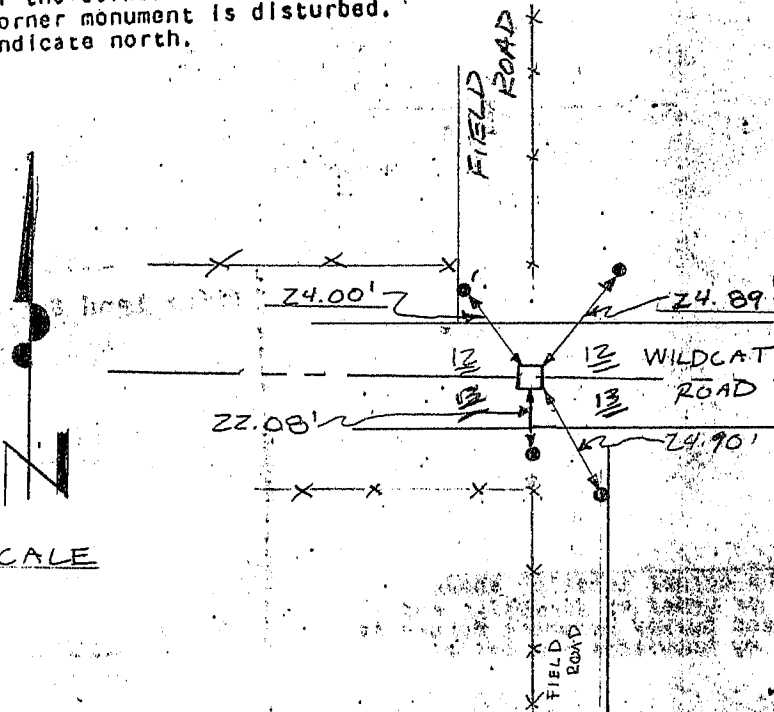


- (b) Describe any record evidence, monument evidence, occupational evidence, testimonial evidence or any other material evidence you considered, and whether the monument was found or placed.

MONUMENT WAS PLACED BASED ON OCCUPATIONAL EVIDENCE & VERIFIED BY EDM TRAVERSE OF THE AREA.

- (c) In the plan view drawing below, provide reference ties to at least 4 witness monuments, or, if the location is within a municipality, to at least 2 witness monuments. (Witness monuments shall be made of concrete, natural stone, iron or other equally durable material.) Describe witness monuments.

- (d) Show a plan view drawing depicting the relevant monuments and reference ties which is sufficient in detail to enable accurate relocation of the corner monument if the corner monument is disturbed. Indicate north.



LEGEND

□ 7/8" x 24" SMOOTH BAR PLACED

● 3/8" x 12" SPIKES SET AS TIES

--- FENCE

NO SCALE

(e) Describe any material discrepancy between the location of the corner as restored or reestablished and the location of that corner as previously restored or reestablished by distance and direction. Show the discrepancy on the plan view drawing under (d), above. Show the distances between the corner as previously restored or reestablished and (1) the corner as restored or reestablished, and (2) to at least 2 of the witness monuments shown on the drawing in (d), above.

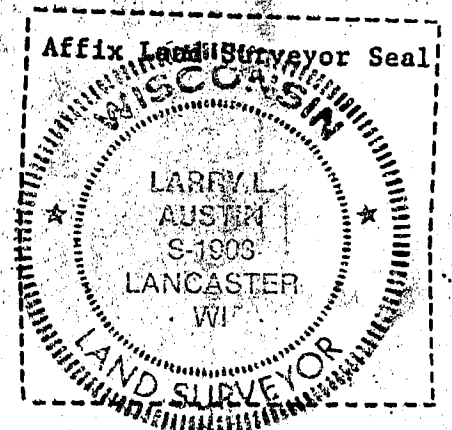
None

(f) Was the corner restored through acceptance of (1) an obliterated evidence location, or, (2) a found perpetuated location?

(2) FOUND PERPETUATED LOC.

(g&h) Was the corner reestablished through lost corner proportionate methods? If so, show the method, including the directions and distances to other public land survey corners used as evidence or used for proportioning in determining the corner location?

No



(i) I, LARRY L. AUSTIN
(type or print name) certify that the corner location shown on this record was determined by me or under my direction and control and that this U.S. Public Land Survey Monument Record is correct and complete to the best of my knowledge and belief.

Larry L. Austin
Signature

8/30/93
Date