

U.S. PUBLIC LAND SURVEY MONUMENT RECORD - GRANT COUNTY, WI

Section 11, Town 4 North Range 1 West, Town of Lima (a)

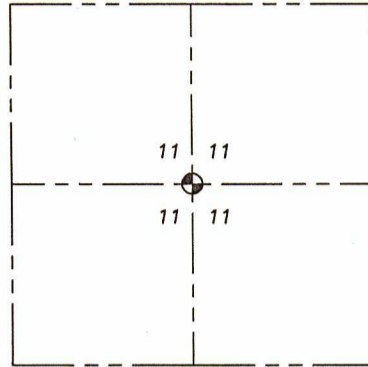
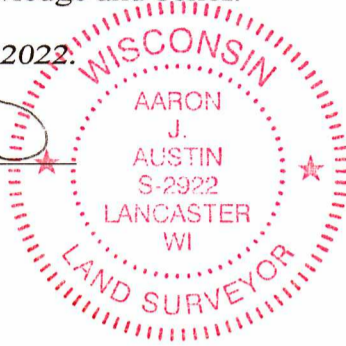
NOTE: This form is intended and designed to fulfill all requirements of the Wisconsin Administrative Code Chapter A-E 7.08, U.S. Public Land Survey Monument Record (3) (a) (b) (c) (d) (e) (f) (g) (h) (i).

CERTIFICATE: (i)

I, Aaron J. Austin, Wisconsin Professional Land Surveyor, do hereby certify that the corner location on this record was determined by me and/or under my direct supervision and that this U.S. Public Land Survey Monument Record is correct and complete to the best of my knowledge and belief.

Dated this 19th day of January, 2022.

*Aaron J. Austin*  
Aaron J. Austin, S-2922



⊕ = CORNER LOCATION

Grant County Coordinates:  
NAD 83 (2011)  
Northing: 519,101.45  
Easting: 887,028.22

HISTORY OF CORNER ESTABLISHMENT:

Corner was not set with the original Government Survey.  
H.A. Wiltse set the corner on a Survey filed in Book A, Page 144-145 dated 12/8/1842.  
The corner was tied to on surveys Book B, Page 396 and Book D, Page 203.  
Douglas Malliet set a 3/4" Rebar on a Plat of Survey filed in Book L, Page 351 dated 10/3/1988.

DESCRIPTION OF CORNER EVIDENCE FOUND: (b) (f) (g) (h)

I found the 3/4" Rebar Malliet set. I set four witness corners after I verified the Monument's location with G.P.S. and E.D.M. methods.

DESCRIPTION OF CORNER AND WITNESS MONUMENTS, references and accessories used to perpetuate the original or re-established location of this corner. (c) (d) (e)

Witnesses to corner location Shane Austin, Owen Austin, Tanner Austin.  
Drawn by Owen Austin

SKETCH:

LEGEND

- ⊕ Section Corner—as designated
- 5/8" x 18" rebar set
- x-x-x- Existing fence

