

REMON
41026

GRANT COUNTY U.S. PUBLIC LAND SURVEY MONUMENT RECORD

INSTRUCTIONS: THIS RECORD SHALL SHOW THE LOCATION OF THE CORNER AND SHALL INCLUDE ALL OF THE FOLLOWING ELEMENTS (A THROUGH I).

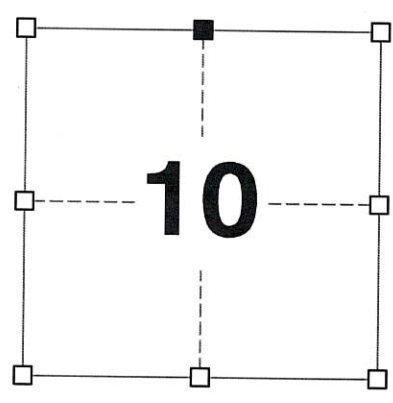
(A) IDENTIFY THE CORNER AS REFERENCED TO THE U.S. PUBLIC LAND SURVEY SYSTEM

■ = CORNER MONUMENT RESTORED

WITNESSES TO CORNER LOCATION:
PAIGE O. JELINEK
TODD C. PATTON

GEOGRAPHIC COORDINATES,
 NAD 83 (2011) ADJUSTMENT:
LATITUDE: 42° 50' 31.54787"
LONGITUDE: 90° 28' 36.24068"

WISCONSIN COORDINATE REFERENCE SYSTEM (WISCRS),
 GRANT COUNTY, NAD 83 (2011) ADJUSTMENT:
NORTHING: 521,665.781
EASTING: 881,705.186



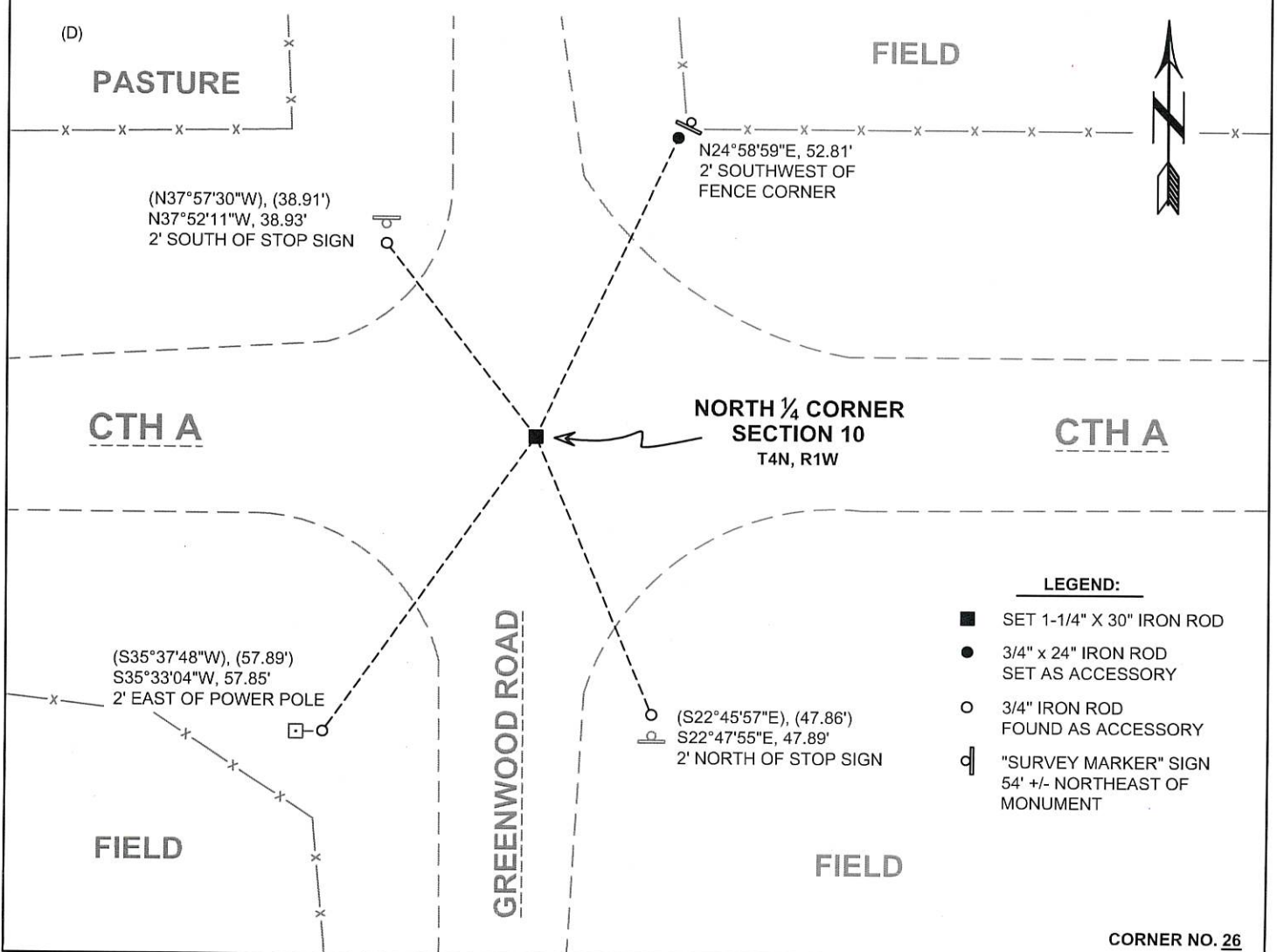
SECTION 10
TOWNSHIP 4 NORTH, RANGE 1 WEST
TOWN OF LIMA

(B) DESCRIBE ANY RECORD EVIDENCE, MONUMENT EVIDENCE, OCCUPATIONAL EVIDENCE, TESTIMONIAL EVIDENCE OR ANY OTHER MATERIAL EVIDENCE YOU CONSIDERED, AND WHETHER THE MONUMENT WAS FOUND OR PLACED.

I COULD FIND NO MONUMENTS OR BEARING TREES FROM THE ORIGINAL GOVERNMENT SURVEY OR THE HISTORIC COUNTY SURVEYOR'S SUBSEQUENT RESURVEYS. I RECOVERED THE COTTON GIN SPIKE REPORTED BY AARON AUSTIN. I ACCEPTED THIS LOCATION AS THE BEST AVAILABLE EVIDENCE OF THE ORIGINAL GOVERNMENT CORNER AND REMONUMENTED IT WITH A 1-1/4" X 30" IRON ROD.

(C) IN THE PLAN VIEW DRAWING BELOW, PROVIDE REFERENCE TIES TO AT LEAST 4 WITNESS MONUMENTS. WITNESS MONUMENTS SHALL BE MADE OF CONCRETE, NATURAL STONE, IRON, BEARING TREES OR ANY OTHER EQUALLY DURABLE MATERIAL. DEPICT THE RELEVANT MONUMENTS AND REFERENCE TIES WITH SUFFICIENT DETAIL TO ENABLE ACCURATE RELOCATION OF THE CORNER IF THE CORNER MONUMENT IS DISTURBED.

(D)



LEGEND:

- SET 1-1/4" X 30" IRON ROD
- 3/4" x 24" IRON ROD SET AS ACCESSORY
- 3/4" IRON ROD FOUND AS ACCESSORY
- "SURVEY MARKER" SIGN 54' +/- NORTHEAST OF MONUMENT

(E) DESCRIBE ANY MATERIAL DISCREPANCY BETWEEN THE LOCATION OF THE CORNER AS RESTORED OR REESTABLISHED AND THE LOCATION OF THAT CORNER AS PREVIOUSLY RESTORED OR REESTABLISHED BY DISTANCE AND DIRECTION. SHOW THE DISCREPANCY ON THE PLAN VIEW DRAWING UNDER (D), ABOVE. SHOW THE DISTANCES BETWEEN THE CORNER AS PREVIOUSLY RESTORED OR REESTABLISHED AND (1) THE CORNER AS RESTORED OR REESTABLISHED, AND (2) TO AT LEAST 2 OF THE WITNESS MONUMENTS SHOWN ON THE DRAWING IN (D) ABOVE.

N/A

(F) WAS THE CORNER RESTORED THROUGH ACCEPTANCE OF (1) AN OBLITERATED EVIDENCE LOCATION, OR (2) A FOUND PERPETUATED LOCATION?

(2) A FOUND PERPETUATED LOCATION.

(G&H) WAS THE CORNER REESTABLISHED THROUGH LOST CORNER PROPORTIONATE METHODS? IF SO, SHOW THE METHOD, INCLUDING THE DIRECTIONS AND DISTANCES TO OTHER PUBLIC LAND SURVEY CORNERS USED AS EVIDENCE OR USED FOR PROPORTIONING IN DETERMINING THE CORNER LOCATION.

N/A

CORNER HISTORY

THE ORIGINAL GOVERNMENT CORNER WAS ESTABLISHED BY ROBERT CLARK JR. IN THE FIRST QUARTER OF 1833.

IN SURVEYS DATED 3 MARCH 1852, 22 AUGUST 1854, AND 4 JANUARY 1855, C.J. OVERTON FOUND THE ORIGINAL CORNER.

IN A PLAT OF SURVEY DATED 6 APRIL 1987, LARRY AUSTIN REPORTED FINDING A GRANT COUNTY ALUMINUM MONUMENT AT THE CORNER.

IN A TIE SHEET DATED 7 APRIL 1987, BRUCE BOWDEN REPORTED FINDING A GRANT COUNTY ALUMINUM MONUMENT AT THE CORNER.

IN A PLAT OF SURVEY DATED 6 DECEMBER 1993, BRUCE BOWDEN REPORTED FINDING A GRANT COUNTY ALUMINUM MONUMENT AT THE CORNER.

IN A PLAT OF SURVEY AND SUBSEQUENT TIE SHEET DATED JUNE 2018, AARON AUSTIN REPORTED SETTING A 1/2" X 4-3/4" COTTON GIN SPIKE AT THE CORNER.

IN A PLAT OF SURVEY DATED 3 SEPTEMBER 2019, MICHAEL ROCHON REPORTED FINDING A COTTON GIN SPIKE AT THE CORNER.

AFFIX LAND SURVEYOR SEAL

(I) I, JAY P. ADAMS, P.L.S. - 2879, CERTIFY THAT THE CORNER LOCATION SHOWN ON THIS RECORD WAS DETERMINED BY ME OR UNDER MY DIRECTION AND CONTROL AND THAT THIS U.S. PUBLIC LAND SURVEY MONUMENT RECORD IS CORRECT AND COMPLETE TO THE BEST OF MY KNOWLEDGE AND BELIEF.



SIGNATURE

24 SEPTEMBER 2022

DATE



41026

U.S. PUBLIC LAND SURVEY MONUMENT RECORD - GRANT COUNTY, WI

Section 10, Town 4 North Range 1 West, Town of Lima (a)

NOTE: This form is intended and designed to fulfill all requirements of the Wisconsin Administrative Code Chapter A-E 7.08, U.S. Public Land Survey Monument Record (3) (a) (b) (c) (d) (e) (f) (g) (h) (i).

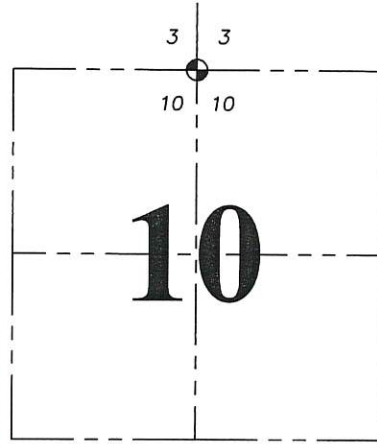
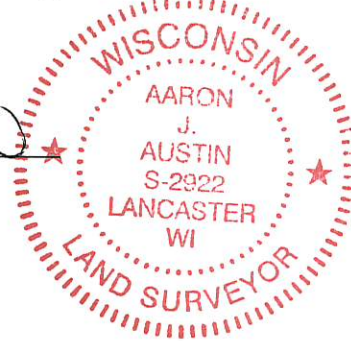
Grant County Corner I.D.: 41026

CERTIFICATE: (i)

I, Aaron J. Austin, Wisconsin Professional Land Surveyor, do hereby certify that the corner location on this record was determined by me and/or under my direct supervision and that this U.S. Public Land Survey Monument Record is correct and complete to the best of my knowledge and belief.

Dated this 7th day of June, 2018.

Aaron J. Austin
Aaron J. Austin, S-2922



☉ = CORNER LOCATION

Grant County Coordinates:
NAD 83 (2011)
Northing: 521,665.75
Easting: 881,705.18

HISTORY OF CORNER ESTABLISHMENT:

- 1833-Robert Clark set the original corner
- 1852-Overton tied to the corner on a Survey filed in Book B, Page 292.
- 1854-Overton tied to the corner on a Survey filed in Book B, Page 354.
- 1987-Larry Austin tied to the corner on a Survey filed in Book J, Page 54.
- 1993-Bruce Bowden tied to the corner on a Survey filed in Book T, Page 22.
- 1987-Bruce Bowden prepared a Survey Monument Record dated 4-7-1987.

DESCRIPTION OF CORNER EVIDENCE FOUND: (b) (f) (g) (h)

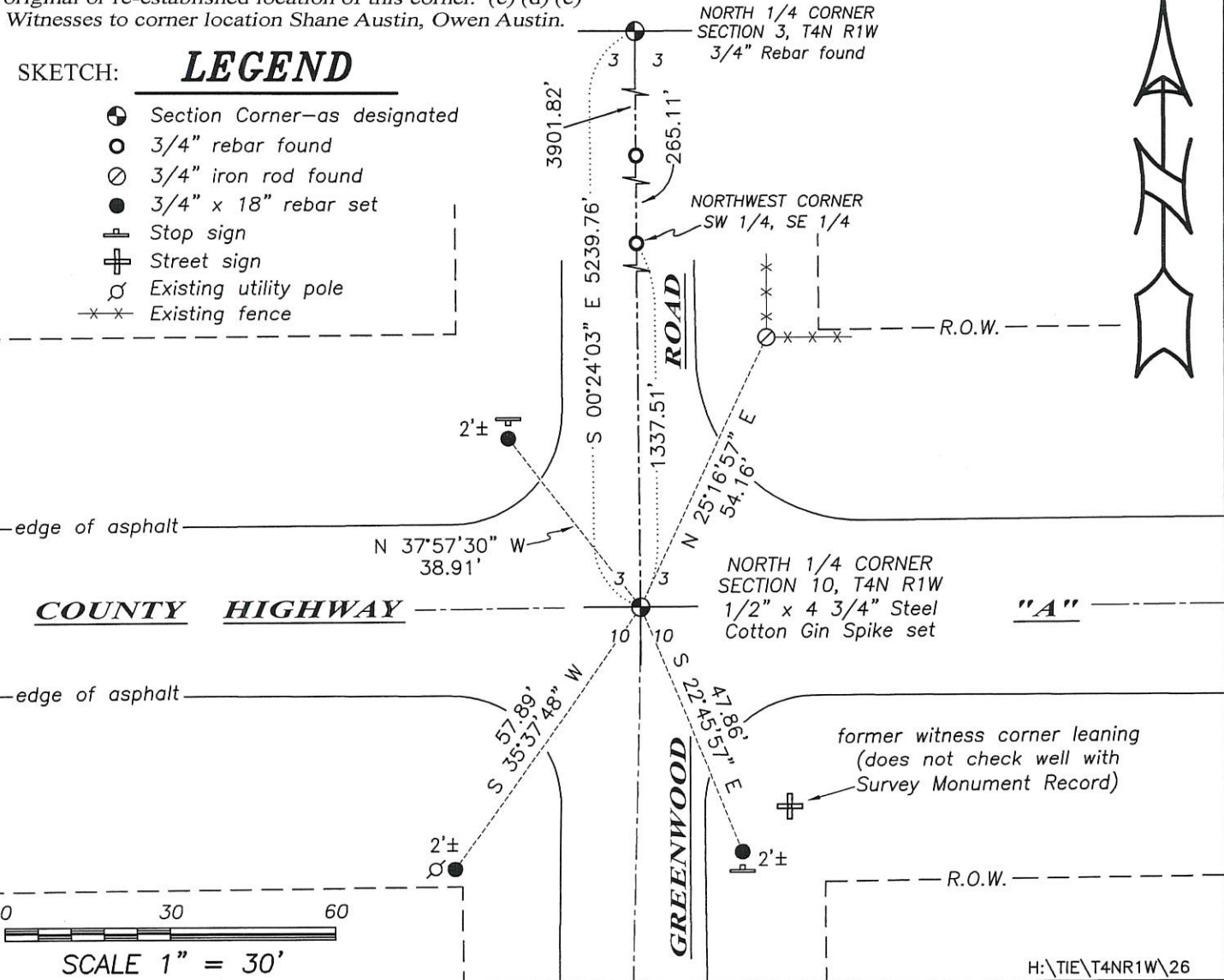
The monument appears to have been removed during resurfacing of the highway. I measured a 3/4" rebar at the North 1/4 corner of Section 3 and a 3/4" rebar at the Northwest corner of the SW 1/4 of the SE 1/4 of Section 3. I reset the corner online with these two rebars at the recorded distance of 1337.51 feet based upon Bowden's dimensions of Book T, Page 22 survey. I found one witness corner and set three additional witness corners after I verified the monument's location with G.P.S. and E.D.M. methods.

DESCRIPTION OF CORNER AND WITNESS MONUMENTS, references and accessories used to perpetuate the original or re-established location of this corner. (c) (d) (e)
Witnesses to corner location Shane Austin, Owen Austin.

SKETCH:

LEGEND

- ☉ Section Corner—as designated
- 3/4" rebar found
- ⊙ 3/4" iron rod found
- 3/4" x 18" rebar set
- ⊥ Stop sign
- ⊕ Street sign
- ♂ Existing utility pole
- *- Existing fence



SCALE 1" = 30'

U. S. PUBLIC LAND SURVEY MONUMENT RECORD

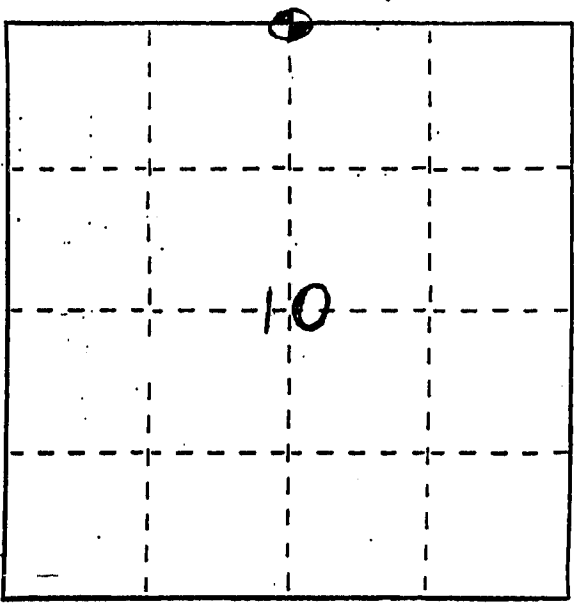
INSTRUCTIONS :

This record shall show the location of the corner and shall include all of the following nine elements (a through i).

(a) Identify the corner by reference to the U.S. public land survey system.

⊕ = Corner monument restored.

NORTH 1/4 CORNER OF SECTION 10, TOWN 4 NORTH, RANGE 1 WEST, LIMA TOWNSHIP, GRANT COUNTY, WISCONSIN.

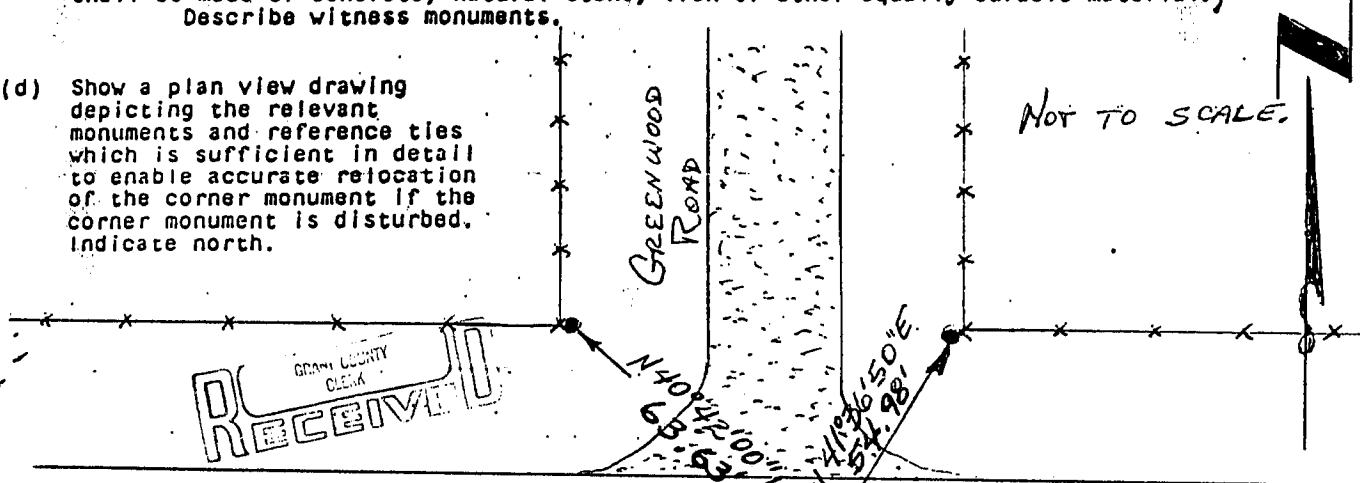


(b) Describe any record evidence, monument evidence, occupational evidence, testimonial evidence or any other material evidence you considered, and whether the monument was found or placed.

CORNER SET FROM TIES TO HIGHWAY PLANS FOR COUNTY HIGHWAY 'A', AFTER VERIFICATION FROM PROPORTIONATE MEASUREMENTS FROM AN EDM TRAVERSE OF THE AREA. NO OTHER EVIDENCE OF THE CORNER FOUND IN THIS CUT SECTION.

(c) In the plan view drawing below, provide reference ties to at least 4 witness monuments, or, if the location is within a municipality, to at least 2 witness monuments. (Witness monuments shall be made of concrete, natural stone, iron or other equally durable material.) Describe witness monuments.

(d) Show a plan view drawing depicting the relevant monuments and reference ties which is sufficient in detail to enable accurate relocation of the corner monument if the corner monument is disturbed. Indicate north.

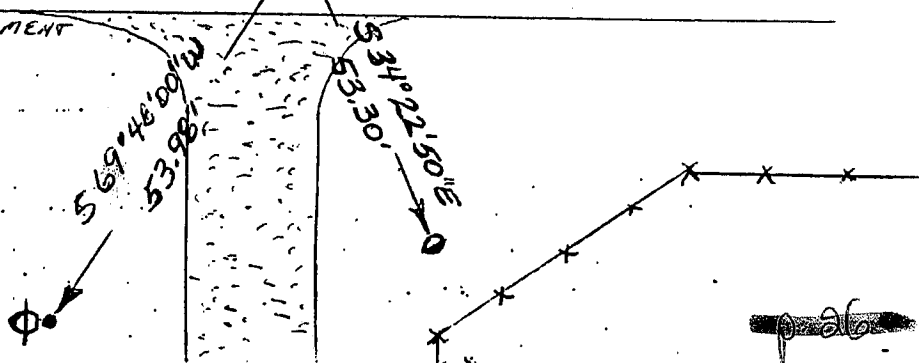


NOT TO SCALE.

LEGEND

JUN 24 1987

- ⊕ GRANT COUNTY ALUMINUM MONUMENT
- 3/8" x 24" SMOOTH, IRON ROD
- 2" PIPE SIGN POST
- ⊙ POWER POLE
- *** FENCE



26

(e) Describe any material discrepancy between the location of the corner as restored or reestablished and the location of that corner as previously restored or reestablished by distance and direction. Show the discrepancy on the plan view drawing under (d), above. Show the distances between the corner as previously restored or reestablished and (1) the corner as restored or reestablished, and (2) to at least 2 of the witness monuments shown on the drawing in (d), above.

NONE

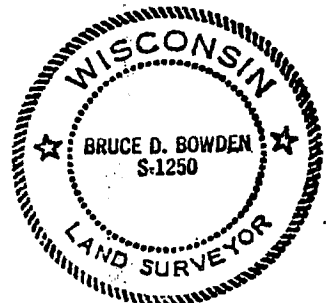
(f) Was the corner restored through acceptance of (1) an obliterated evidence location, or, (2) a found perpetuated location?

(2) A FOUND PERPETUATED LOCATION

(g&h) Was the corner reestablished through lost corner proportionate methods? If so, show the method, including the directions and distances to other public land survey corners used as evidence or used for proportioning in determining the corner location?

No.

Affix Land Surveyor Seal



(i) I, BRUCE D. BOWDEN
(type or print name) certify that the corner location shown on this record was determined by me or under my direction and control and that this U.S. Public Land Survey Monument Record is correct and complete to the best of my knowledge and belief.

Signature

Date

Bruce D. Bowden April 7, 1987