

REMON  
41023

# GRANT COUNTY U.S. PUBLIC LAND SURVEY MONUMENT RECORD

INSTRUCTIONS: THIS RECORD SHALL SHOW THE LOCATION OF THE CORNER AND SHALL INCLUDE ALL OF THE FOLLOWING ELEMENTS (A THROUGH I).

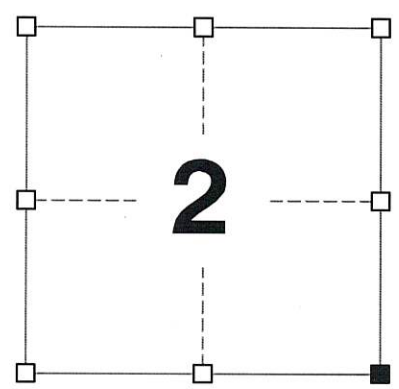
(A) IDENTIFY THE CORNER AS REFERENCED TO THE U.S. PUBLIC LAND SURVEY SYSTEM

■ = CORNER MONUMENT RESTORED

WITNESSES TO CORNER LOCATION:  
PAIGE O. JELINEK  
TODD C. PATTON

GEOGRAPHIC COORDINATES,  
NAD 83 (2011) ADJUSTMENT:  
LATITUDE: 42° 50' 32.64171"  
LONGITUDE: 90° 26' 49.66657"

WISCONSIN COORDINATE REFERENCE SYSTEM (WISCRS),  
GRANT COUNTY, NAD 83 (2011) ADJUSTMENT:  
NORTHING: 521,808.384  
EASTING: 889,644.970



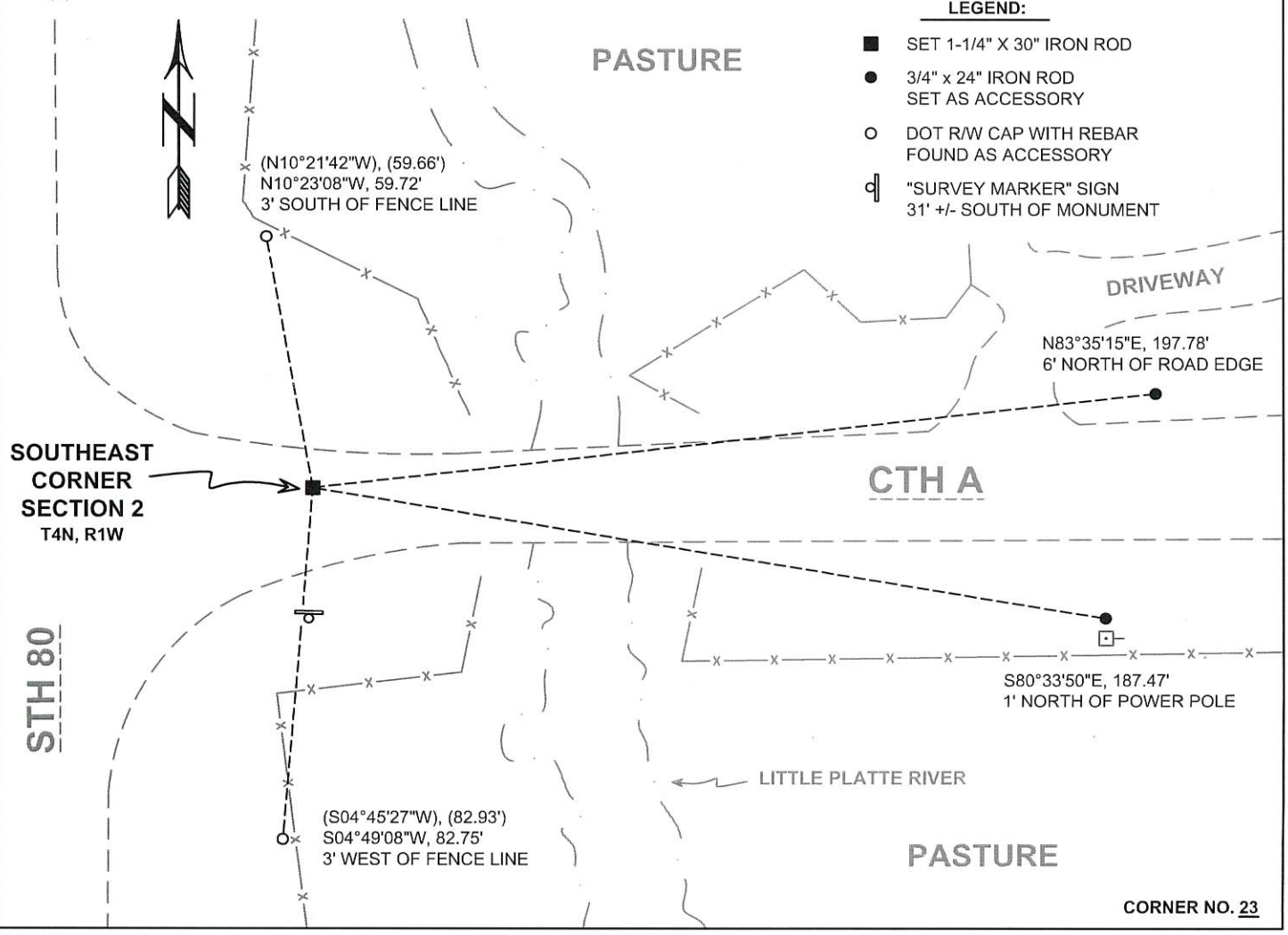
SECTION 2  
TOWNSHIP 4 NORTH, RANGE 1 WEST  
TOWN OF LIMA

(B) DESCRIBE ANY RECORD EVIDENCE, MONUMENT EVIDENCE, OCCUPATIONAL EVIDENCE, TESTIMONIAL EVIDENCE OR ANY OTHER MATERIAL EVIDENCE YOU CONSIDERED, AND WHETHER THE MONUMENT WAS FOUND OR PLACED.

I COULD FIND NO MONUMENTS OR BEARING TREES FROM THE ORIGINAL GOVERNMENT SURVEY OR THE HISTORIC COUNTY SURVEYOR'S SUBSEQUENT RESURVEYS. I RECOVERED THE MAG NAIL REPORTED BY ALT. I ACCEPTED THIS LOCATION AS THE BEST AVAILABLE EVIDENCE OF THE ORIGINAL GOVERNMENT CORNER AND REMONUMENTED IT WITH A 1-1/4" X 30" IRON ROD.

(C) IN THE PLAN VIEW DRAWING BELOW, PROVIDE REFERENCE TIES TO AT LEAST 4 WITNESS MONUMENTS. WITNESS MONUMENTS SHALL BE MADE OF CONCRETE, NATURAL STONE, IRON, BEARING TREES OR ANY OTHER EQUALLY DURABLE MATERIAL. DEPICT THE RELEVANT MONUMENTS AND REFERENCE TIES WITH SUFFICIENT DETAIL TO ENABLE ACCURATE RELOCATION OF THE CORNER IF THE CORNER MONUMENT IS DISTURBED.

(D)



**LEGEND:**

- SET 1-1/4" X 30" IRON ROD
- 3/4" x 24" IRON ROD SET AS ACCESSORY
- DOT R/W CAP WITH REBAR FOUND AS ACCESSORY
- "SURVEY MARKER" SIGN 31' +/- SOUTH OF MONUMENT

(E) DESCRIBE ANY MATERIAL DISCREPANCY BETWEEN THE LOCATION OF THE CORNER AS RESTORED OR REESTABLISHED AND THE LOCATION OF THAT CORNER AS PREVIOUSLY RESTORED OR REESTABLISHED BY DISTANCE AND DIRECTION. SHOW THE DISCREPANCY ON THE PLAN VIEW DRAWING UNDER (D), ABOVE. SHOW THE DISTANCES BETWEEN THE CORNER AS PREVIOUSLY RESTORED OR REESTABLISHED AND (1) THE CORNER AS RESTORED OR REESTABLISHED, AND (2) TO AT LEAST 2 OF THE WITNESS MONUMENTS SHOWN ON THE DRAWING IN (D) ABOVE.

N/A

(F) WAS THE CORNER RESTORED THROUGH ACCEPTANCE OF (1) AN OBLITERATED EVIDENCE LOCATION, OR (2) A FOUND PERPETUATED LOCATION?

(2) A FOUND PERPETUATED LOCATION.

(G&H) WAS THE CORNER REESTABLISHED THROUGH LOST CORNER PROPORTIONATE METHODS? IF SO, SHOW THE METHOD, INCLUDING THE DIRECTIONS AND DISTANCES TO OTHER PUBLIC LAND SURVEY CORNERS USED AS EVIDENCE OR USED FOR PROPORTIONING IN DETERMINING THE CORNER LOCATION.

N/A

CORNER HISTORY

THE ORIGINAL GOVERNMENT CORNER WAS ESTABLISHED BY ROBERT CLARK JR. IN THE FIRST QUARTER OF 1833.

IN A SURVEY DATED 18 DECEMBER 1842, SAM WILTSE FOUND THE ORIGINAL CORNER AND BEARING TREES.

IN A SURVEY DATED 22 MAY 1855, C.J. OVERTON REPORTED SETTING A 15" X 12" X 2" STONE AT THE CORNER AND SET A POST 18 LINKS WEST OF THE CORNER IN THE STREAM.

IN A SURVEY DATED 7 MARCH 1892, CHARLES SAMPSON SET THE CORNER USING THE NEAREST CORNER.

IN A SURVEY PLAT DATED 18 DECEMBER 1981, JOHN HALVERSON NOTED THE CORNER.

IN A TIE SHEET DATED 25 AUGUST 1995, LARRY AUSTIN REPORTED SETTING A 3/4" X 24" IRON REBAR AT THE CORNER.

IN A PLAT OF SURVEY DATED 17 JANUARY 2000, LARRY AUSTIN REPORTED FINDING A NO. 6 REBAR AT THE CORNER.

IN A TIE SHEET DATED 10 AUGUST 2005, LARRY AUSTIN REPORTED FINDING A NO. 6 REBAR AT THE CORNER.

IN A PLAT OF SURVEY DATED 30 NOVEMBER 2007, LARRY AUSTIN REPORTED FINDING A NO. 6 REBAR AT THE CORNER.

IN A PLAT OF SURVEY DATED 5 AUGUST 2009, LARRY AUSTIN REPORTED FINDING A NO. 6 REBAR AT THE CORNER.

IN A PLAT OF SURVEY DATED 9 NOVEMBER 2011, AARON AUSTIN REPORTED FINDING A NO. 6 REBAR AT THE CORNER.

IN A TIE SHEET DATED 7 NOVEMBER 2011, ANTHONY ALT REPORTED SETTING A MAG NAIL AT THE CORNER.

IN A PLAT OF SURVEY LAST REVISED 30 JUNE 2015, STEPHEN FAULKES NOTED THE CORNER.

IN A PLAT OF SURVEY DATED 10 SEPTEMBER 2015, MICHAEL LAROSA REPORTED FINDING A MAG NAIL AT THE CORNER.

IN A PLAT OF SURVEY DATED 1 FEBRUARY 2016, AARON AUSTIN REPORTED FINDING A MAG NAIL AT THE CORNER.

IN A PLAT OF SURVEY DATED 2 FEBRUARY 2018, AARON AUSTIN REPORTED FINDING A MAG NAIL AT THE CORNER.

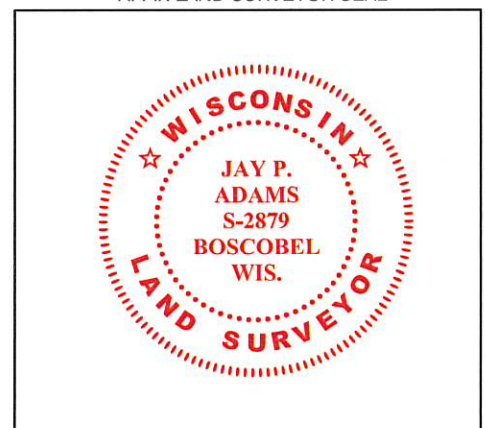
(I) I, JAY P. ADAMS, P.L.S. - 2879, CERTIFY THAT THE CORNER LOCATION SHOWN ON THIS RECORD WAS DETERMINED BY ME OR UNDER MY DIRECTION AND CONTROL AND THAT THIS U.S. PUBLIC LAND SURVEY MONUMENT RECORD IS CORRECT AND COMPLETE TO THE BEST OF MY KNOWLEDGE AND BELIEF.

SIGNATURE

24 SEPTEMBER 2022

DATE

AFFIX LAND SURVEYOR SEAL



# U.S. PUBLIC LAND SURVEY MONUMENT RECORD

(a) Identify the corner to the U.S. Public Land Survey System.

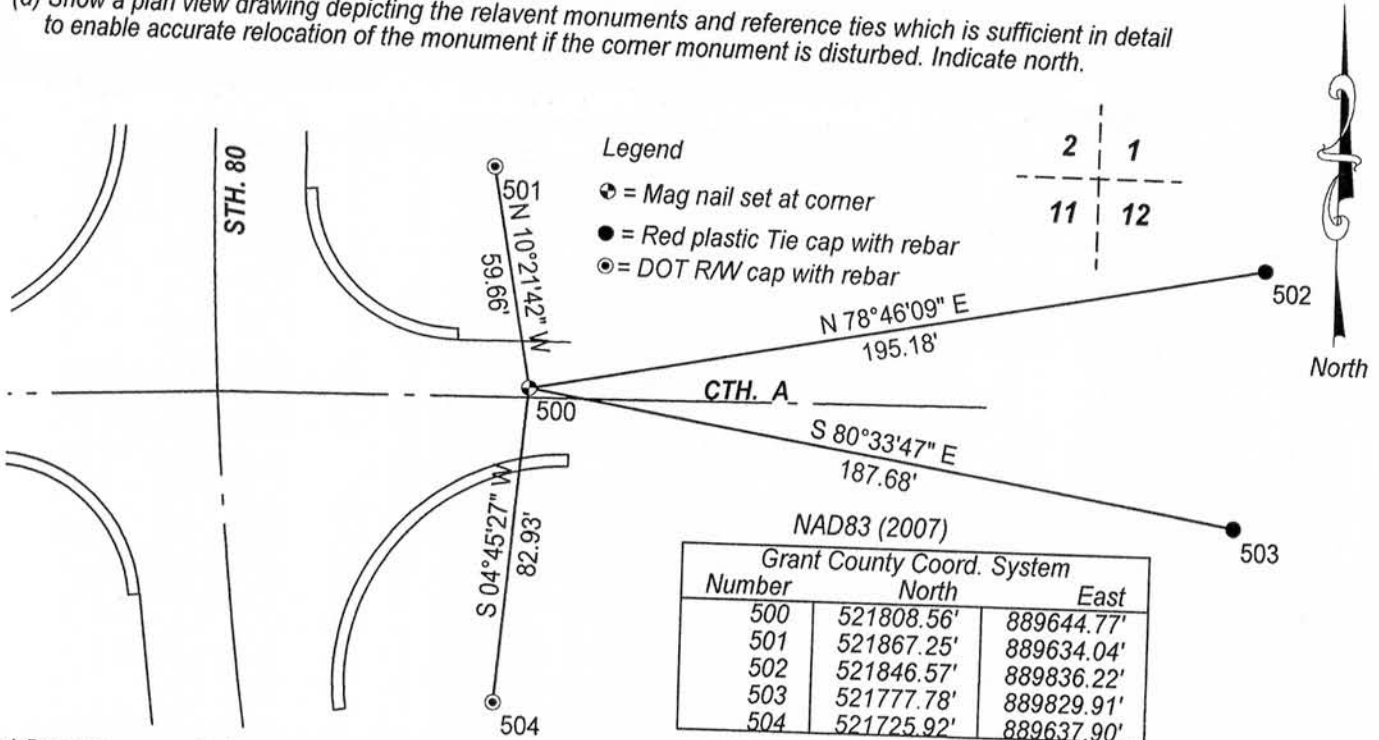
Southeast corner of Section 2, Town 4 North, Range 1 West, Lima Township, Grant County, Wisconsin.

(b) Describe any record evidence, occupational evidence, testimonial evidence or any material evidence you considered, and if the monument was found or placed.

I found and accepted a #6 rebar. The rebar was consistent with the location described in WiDOT Project Plat # 5035-00-21 and existing ties. After road construction, I reset the corner as shown below.

(c) In the plan view below, provide reference ties to at least 4 witness monuments. (Witness monuments shall be made of concrete, material stone, iron or other durable material) Describe the witness monuments.

(d) Show a plan view drawing depicting the relevant monuments and reference ties which is sufficient in detail to enable accurate relocation of the monument if the corner monument is disturbed. Indicate north.



(e) Describe any material discrepancy between the location of the corner as restored and the location of that corner previously restored or reestablished by distance and direction. Show the discrepancy on the plan view drawing under (d), above. Show the distance between the corner as previously restored or reestablished and (1) the corner as restored or reestablished, and (2) to at least 2 of the witness monuments shown on the drawing above.

No known discrepancy.

(f, g & h) Was the corner restored through:

- (1) Acceptance of an obliterated evidence location, or
- (2) Acceptance of a found perpetuated location, or
- (3) Lost corner proportionate methods? If lost corner methods were used, show the method, including the direction and distance to other Public Land survey corners used as evidence or used for proportioning in determining the corner location.

(2) Acceptance of a found perpetuated location.

(i) I Anthony J. Alt, certify that the corner location shown on this record was determined by me or under my direction and control and that this U.S. Public Land Survey Monument is accurate and complete to the best of my knowledge and belief.



Signature Anthony J. Alt

Date 11-7-12

Affix Seal

NOV 21 2012

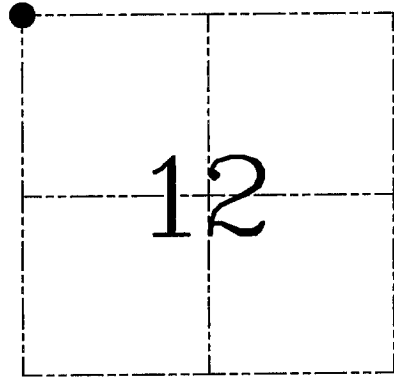
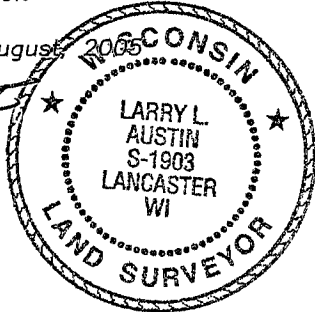
**U.S. PUBLIC LAND SURVEY MONUMENT RECORD – GRANT COUNTY, WI**  
**Section 12, Town 4 North Range 1 West, Town of Lima**

CERTIFICATE

I, Larry L. Austin, do hereby certify that the corner location on this record was determined by me and/or under my direct supervision and that this U.S. public land survey monument record is correct and complete to the best of my knowledge and belief.

Dated this 10th day of August 2005

*Larry L. Austin*  
 Larry L. Austin S-1903



● = CORNER LOCATION

HISTORY OF CORNER ESTABLISHMENT

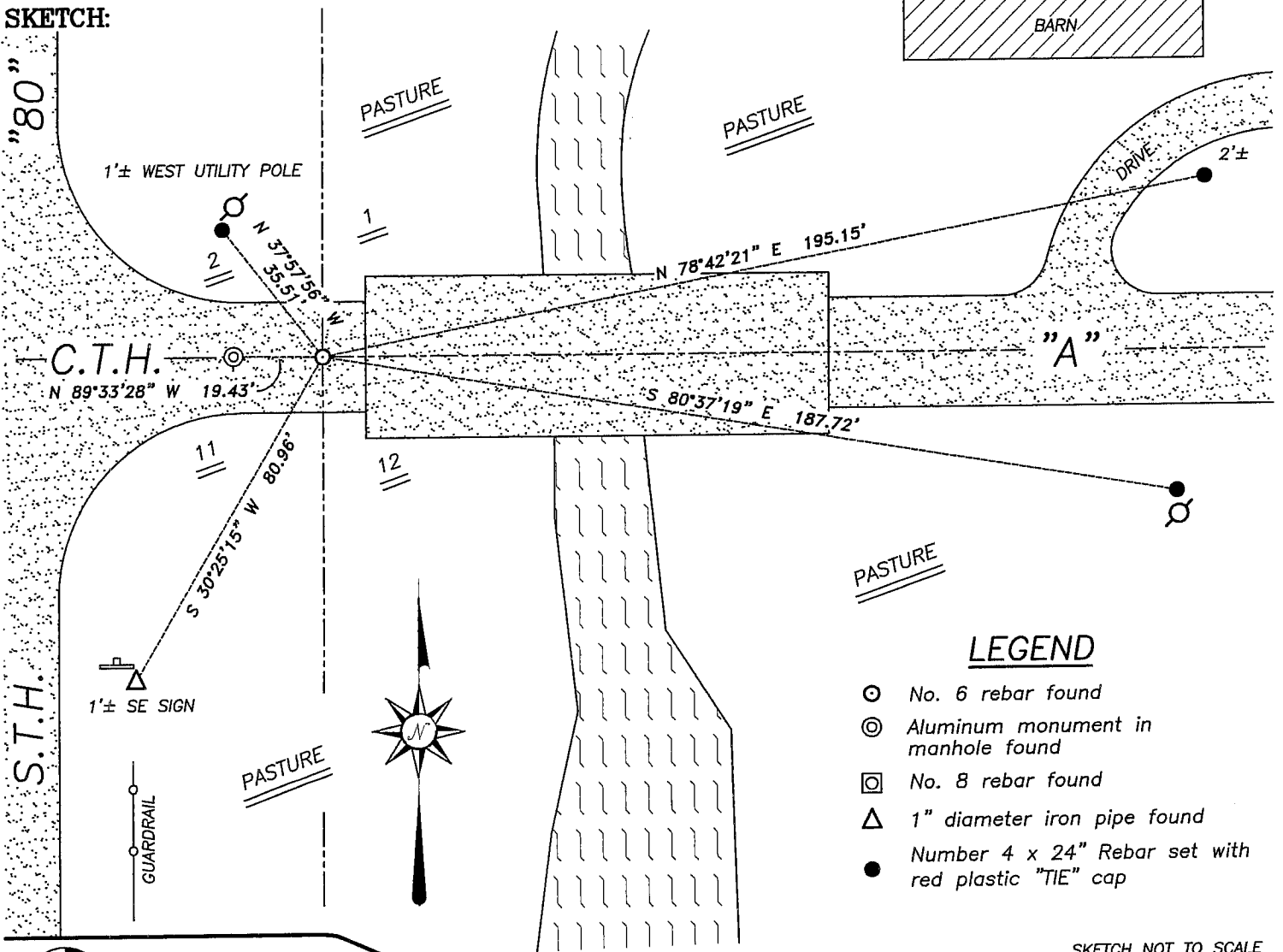
Corner was originally set in 1833 by Clark. In 1980 Davis set a Railroad Spike. The DOT set an Aluminum monument in a manhole. In 1995 I set a 3/4" iron bar.

DESCRIPTION OF CORNER EVIDENCE FOUND

I found and accepted the existing iron bar and set new ties. Verified this location using EDM & GPS methods.

DESCRIPTION OF CORNER AND WITNESS MONUMENTS, references and accessories used to perpetuate the original or re-established location of this corner. Witnesses to corner location Bobby Sedgwick & Brad Digman & Shane Austin

**SKETCH:**



LEGEND

- No. 6 rebar found
- ⊙ Aluminum monument in manhole found
- ⊠ No. 8 rebar found
- △ 1" diameter iron pipe found
- Number 4 x 24" Rebar set with red plastic "TIE" cap

SKETCH NOT TO SCALE



**Austin Engineering LLC**

4211 HWY 81 E, LANCASTER, WI 53813  
 PHONE 608-723-6363 FAX 608-723-6702

JOB NUMBER 05S050  
 FIELDBOOK: TDSR, 2512  
 G:\GRANTDOT\T5NR1W  
 H:\TIE\T4NR1W\23

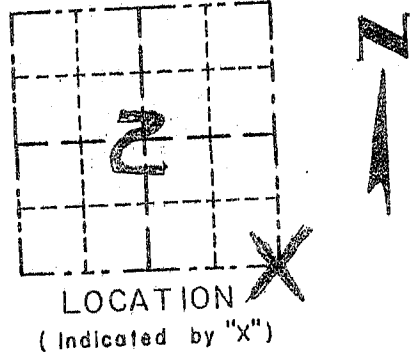
DRAWN BY: SW AUSTIN  
 APPROVED: LL AUSTIN

# GRANT COUNTY

## Survey Monument Record

TYPE OF MONUMENT 3/4" X 24" REBAR SET  
 STATE PLANE COORDINATES: N \_\_\_\_\_  
 E \_\_\_\_\_  
 ELEVATION — M.S.L. DATUM: \_\_\_\_\_  
 THETA ANGLE: \_\_\_\_\_  
 FIELD BOOK: 95-10  
 PAGE: Pg. 5

CORNER NO. 23  
 SECTION 2  
 TOWN 4N  
 RANGE 1W  
SE COR.



### BASIS FOR MONUMENT LOCATION

(Use reverse side if necessary)

Show info such as: History of corner, with reference to Vol. and pg., dates, surveyor; exact description of monument replaced; if location computed, by taped or EDM traverse; landowner, remarks, etc.

SEAL:



CORNER WAS ORIGINALLY SET BY CLARK IN 1833; A 1980 SURVEY BY D. DAVIS STATES RR SPIKE AT THE CORNER LOCATION; APPARENTLY THE DOT SET A MONUMENT AT THE RR SPIKE (NO INFORMATION REGARDING ITS ESTABLISHMENT) IT APPEARS THE D.O.T. MONUMENT'S LOCATION WAS PROPORTIONED IN. I BELIEVE THE CORNER LOCATION TO BE 19.49' E. OF THE D.O.T. MONUMENT BASED ON OCCUR EVIDENCE OF THE HWY. THRU ALTHUR (PLAT OF WASHBURN). THIS LOCATION FITS THE ALIGNMENT TO THE SECTION CORNER 1/2 SOUTH

CERTIFIED CORRECT

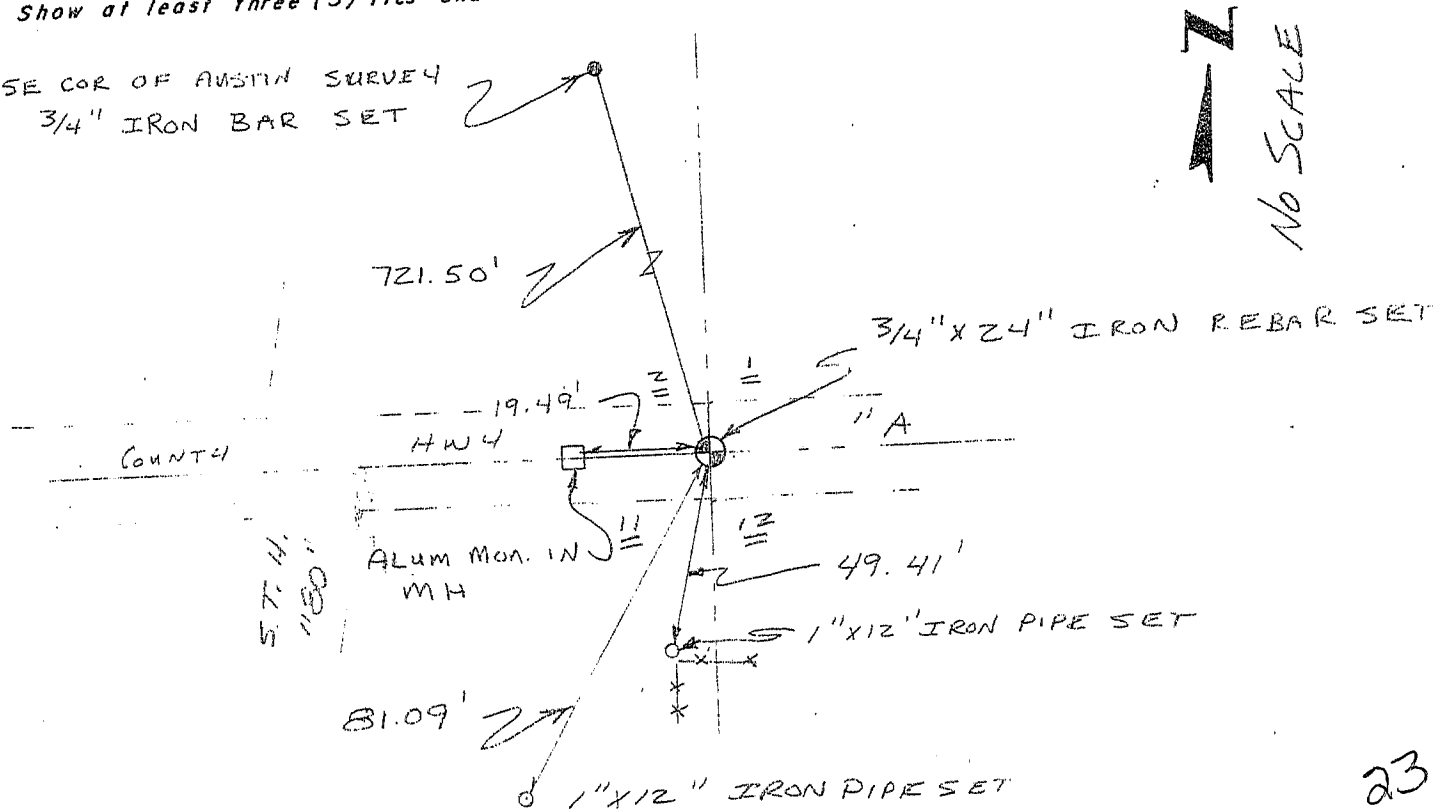
*Larry Austin*  
 Registered Land Surveyor

DATE: 8/25/95

### TIE SKETCH

Show at least three (3) ties and monument

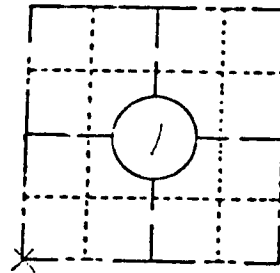
SE COR OF AUSTIN SURVEY  
 3/4" IRON BAR SET



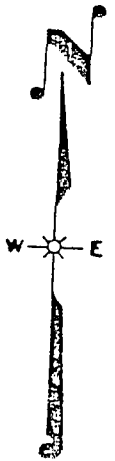
FIELD SURVEY NOTES  
**PRESERVATION OF LANDMARKS**  
 (Pursuant to Section 59.635(7) Wisconsin Statutes)

State Highway Commission of Wisconsin  
 Form E-11-707-65

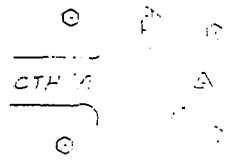
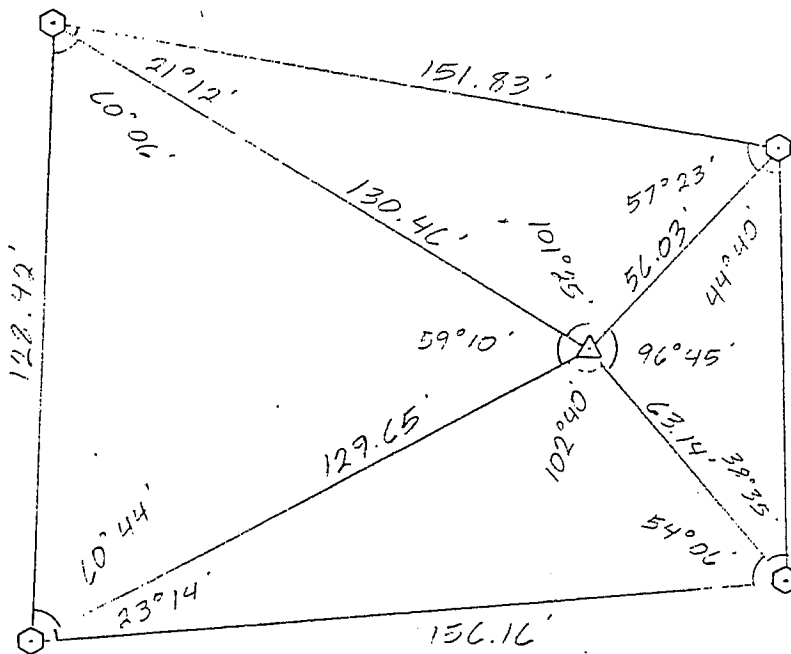
COUNTY		
GRANT		
TOWN		
LIMA		
HIGHWAY		
S.T.H. '80' @ C.T.H. 'A'		
SECTION	TOWNSHIP	RANGE
1	T 4 N	R 1 W
TYPE OF LANDMARK		
SECTION CORNER MONUMENT		



**LOCATION SKETCH**  
 (Location of landmark indicated by "x")



This space for copy of field notes or ties to the above described landmarks



5088-00-71  
 0022-74-00  
 Plattville -  
 Water Street  
 Structures  
 STH 80, Grant  
 Point of

SCALE  
 1" = 40'

- = REFERENCE MONUMENT
- = RIGHT OF WAY POST
- ⌋ = WITNESS POST
- △ = SECTION CORNER LOCATION

COUNTY CLERK'S OFFICE	
COUNTY OF	WISCONSIN } 55
DATE RECEIVED FOR RECORD	DATE COPY SENT TO COUNTY SURVEYOR
SIGNATURE OF COUNTY CLERK	