

# GRANT COUNTY CERTIFIED LAND CORNER

CORNER NUMBER 22

**CERTIFICATE:**

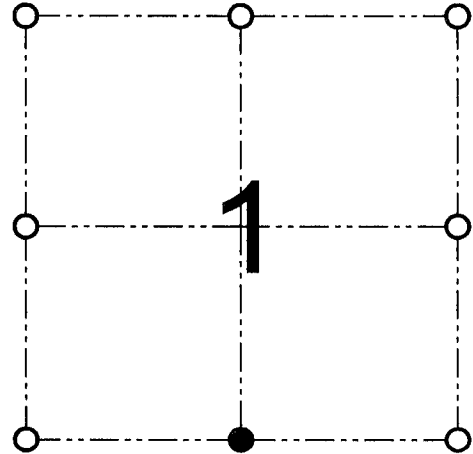
I, Larry L. Austin, do hereby certify that on the 5th day of December, 2000, I found evidence of the South 1/4 corner of Section 1, Town 4 North, Range 1 West, of the 4th Principal Meridian, and I re-established said corner according to the Wisconsin statutes as shown and described hereon.

Dated this 2nd day of February, 2001

*Larry L. Austin*  
Larry L. Austin S-1903



SEAL



● = CORNER LOCATION

SOUTH 1/4 CORNER OF  
SECTION 1, T 4 N R 1 W  
TOWN OF LIMA

**HISTORY OF ORIGINAL CORNER ESTABLISHMENT:**

Corner was originally set in 1833 by Robert Clark. In 1855 Overton found the original corner. In 1986 Malliet set a Number 6 iron bar at this location.

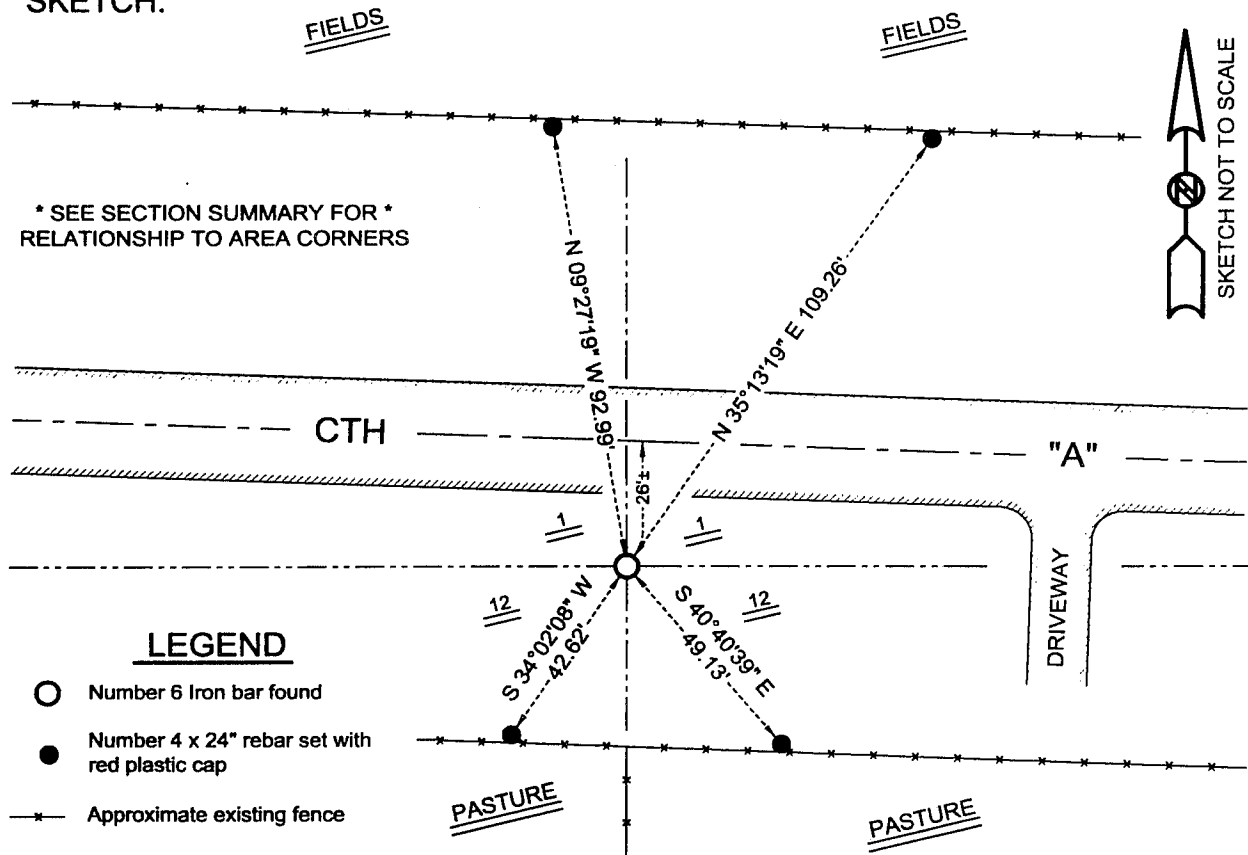
**DESCRIPTION OF CORNER EVIDENCE FOUND:**

I found the existing Number 6 iron bar and accepted it's location after an EDM & GPS traverse of the area.

**DESCRIPTION OF CORNER AND WITNESS MONUMENTS, references and accessories used to perpetuate the original or re-established location of this corner**

WITNESS TO THE CORNER LOCATION: TIM FAUVER & SHELBY BLINDERT & BOBBY SEDGWICK

**SKETCH:**



**AUSTIN ENGINEERING, LLC**  
4211 HWY 81 E, LANCASTER, WI 53813  
PHONE 608-723-6363 FAX 608-723-6702

FIELDBOOK: SDR33, 2038  
G:\T5NR1W\368  
C:\SC14\SWA\TIE\T4NR1W\22

DRAWN BY: SW AUSTIN  
APPROVED: LL AUSTIN  
CREW: BS - SB - SA - TF