

Remon

41015

# GRANT COUNTY U.S. PUBLIC LAND SURVEY MONUMENT RECORD

INSTRUCTIONS: THIS RECORD SHALL SHOW THE LOCATION OF THE CORNER AND SHALL INCLUDE ALL OF THE FOLLOWING ELEMENTS (A THROUGH I).

(A) IDENTIFY THE CORNER AS REFERENCED TO THE U.S. PUBLIC LAND SURVEY SYSTEM

■ = CORNER MONUMENT RESTORED

WITNESSES TO CORNER LOCATION:

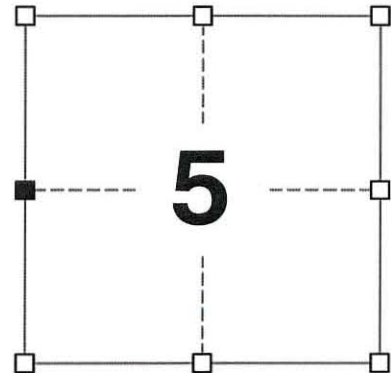
JAY P. ADAMS  
BRADLEY A. SCHROEDER  
TODD C. PATTON

GEOGRAPHIC COORDINATES,  
NAD 83 (2011) ADJUSTMENT:

LATITUDE: 42° 50' 57.29030"  
LONGITUDE: 90° 31' 34.60055"

WISCONSIN COORDINATE REFERENCE SYSTEM (WISCRS),  
GRANT COUNTY, NAD 83 (2011) ADJUSTMENT:

NORTHING: 524,224.983  
EASTING: 868,408.116



SECTION 5  
TOWNSHIP 4 NORTH, RANGE 1 WEST  
TOWN OF LIMA

(B) DESCRIBE ANY RECORD EVIDENCE, MONUMENT EVIDENCE, OCCUPATIONAL EVIDENCE, TESTIMONIAL EVIDENCE OR ANY OTHER MATERIAL EVIDENCE YOU CONSIDERED, AND WHETHER THE MONUMENT WAS FOUND OR PLACED.

I COULD FIND NO MONUMENTS OR BEARING TREES FROM THE HISTORIC COUNTY SURVEYOR'S SUBSEQUENT RESURVEY. I RECOVERED THE 1" REBAR WITH A GRANT COUNTY ALUMINUM CAP REPORTED BY AARON AUSTIN AS WELL AS AN ORIGINAL BEARING TREE ESTABLISHED BY CLARK IN 1833. I ACCEPTED THIS LOCATION AS THE BEST AVAILABLE EVIDENCE OF THE ORIGINAL GOVERNMENT CORNER AND LEFT THIS MONUMENT IN PLACE.

(C) IN THE PLAN VIEW DRAWING BELOW, PROVIDE REFERENCE TIES TO AT LEAST 4 WITNESS MONUMENTS. WITNESS MONUMENTS SHALL BE MADE OF CONCRETE, NATURAL STONE, IRON, BEARING TREES OR ANY OTHER EQUALLY DURABLE MATERIAL. DEPICT THE RELEVANT MONUMENTS AND REFERENCE TIES WITH SUFFICIENT DETAIL TO ENABLE ACCURATE RELOCATION OF THE CORNER IF THE CORNER MONUMENT IS DISTURBED.

(D)

N23°21'21"W, 52.59'  
4' WEST OF ROAD EDGE

FIELD

FIELD

WEST 1/4 CORNER  
SECTION 5  
T4N, R1W

(S83°05'50"E), (18.44')  
S83°01'22"E, 18.41'  
7' WEST OF FENCE CORNER

LEGEND:

- FOUND 1" IRON ROD WITH GRANT COUNTY ALUMINUM CAP
- 3/4" x 24" IRON ROD SET AS ACCESSORY
- 3/4" IRON ROD FOUND AS ACCESSORY
- "SURVEY MARKER" SIGN 25' +/- EAST OF MONUMENT



FIELD

UNION ROAD

PASTURE

40" BUR OAK  
(ORIGINAL BEARING TREE)

(S14°32'12"E), (93.43')  
S14°30'24"E, 93.42'  
3' WEST OF FENCE LINE

55" BUR OAK

(S15°43'49"W), (128.95')  
S15°46'56"W, 128.94'  
2' NORTH OF POWER POLE

41015

(E) DESCRIBE ANY MATERIAL DISCREPANCY BETWEEN THE LOCATION OF THE CORNER AS RESTORED OR REESTABLISHED AND THE LOCATION OF THAT CORNER AS PREVIOUSLY RESTORED OR REESTABLISHED BY DISTANCE AND DIRECTION. SHOW THE DISCREPANCY ON THE PLAN VIEW DRAWING UNDER (D), ABOVE. SHOW THE DISTANCES BETWEEN THE CORNER AS PREVIOUSLY RESTORED OR REESTABLISHED AND (1) THE CORNER AS RESTORED OR REESTABLISHED, AND (2) TO AT LEAST 2 OF THE WITNESS MONUMENTS SHOWN ON THE DRAWING IN (D) ABOVE.

N/A

(F) WAS THE CORNER RESTORED THROUGH ACCEPTANCE OF (1) AN OBLITERATED EVIDENCE LOCATION, OR (2) A FOUND PERPETUATED LOCATION?

(2) A FOUND PERPETUATED LOCATION.

(G&H) WAS THE CORNER REESTABLISHED THROUGH LOST CORNER PROPORTIONATE METHODS? IF SO, SHOW THE METHOD, INCLUDING THE DIRECTIONS AND DISTANCES TO OTHER PUBLIC LAND SURVEY CORNERS USED AS EVIDENCE OR USED FOR PROPORTIONING IN DETERMINING THE CORNER LOCATION.

N/A

CORNER HISTORY

THE ORIGINAL GOVERNMENT CORNER WAS ESTABLISHED BY ROBERT CLARK JR. IN THE FIRST QUARTER OF 1833.

IN A SURVEY DATED 2 MARCH 1877, JOEL BARBER VISITED THE CORNER.

IN A PLAT OF SURVEY DATED 16 AUGUST 1990, BRUCE BOWDEN TIED FROM AN ORIGINAL BEARING TREE TO THE CORNER LOCATION AND DID NOT SET A MONUMENT.

IN A TIE SHEET DATED 16 JANUARY 1998, LARRY AUSTIN REPORTED SETTING A 3/4" X 24" IRON BAR AT THE CORNER.

IN A PLAT OF SURVEY AND SUBSEQUENT TIE SHEET DATED 22 NOVEMBER 2016, AARON AUSTIN REPORTED SETTING A 1" X 24" REBAR WITH A GRANT COUNTY ALUMINUM CAP AT THE CORNER.

IN A PLAT OF SURVEY DATED 24 APRIL 2018, AARON AUSTIN REPORTED FINDING A 1" REBAR WITH A GRANT COUNTY ALUMINUM CAP AT THE CORNER.

IN A PLAT OF SURVEY DATED 19 JUNE 2018, AARON AUSTIN NOTED THE CORNER.

IN A PLAT OF SURVEY DATED 06 DECEMBER 2018, AARON AUSTIN REPORTED FINDING A 1" REBAR WITH A GRANT COUNTY ALUMINUM CAP AT THE CORNER.

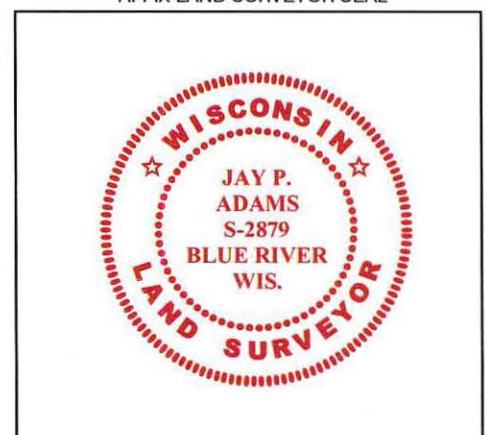
(I) I, JAY P. ADAMS, P.L.S. - 2879, CERTIFY THAT THE CORNER LOCATION SHOWN ON THIS RECORD WAS DETERMINED BY ME OR UNDER MY DIRECTION AND CONTROL AND THAT THIS U.S. PUBLIC LAND SURVEY MONUMENT RECORD IS CORRECT AND COMPLETE TO THE BEST OF MY KNOWLEDGE AND BELIEF.

SIGNATURE

06 MARCH 2020

DATE

AFFIX LAND SURVEYOR SEAL



# U.S. PUBLIC LAND SURVEY MONUMENT RECORD - GRANT COUNTY, WI

Section 5, Town 4 North Range 1 West, Town of Lima (a)

NOTE: This form is intended and designed to fulfill all requirements of the Wisconsin Administrative Code Chapter A-E 7.08, U.S. Public Land Survey Monument Record (3) (a) (b) (c) (d) (e) (f) (g) (h) (i).

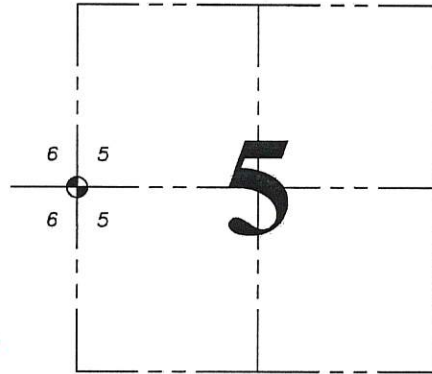
## Corner No. 015

CERTIFICATE: (i)

I, Aaron J. Austin, Wisconsin Professional Land Surveyor, do hereby certify that the corner location on this record was determined by me and/or under my direct supervision and that this U.S. Public Land Survey Monument Record is correct and complete to the best of my knowledge and belief.

Dated this 22nd day of November, 2016.

*Aaron J. Austin*  
 Aaron J. Austin, S-2922



● = CORNER LOCATION

Grant County Coordinates:  
 WISCORS NAD 83 (2011)  
 Northing: 524,225.01  
 Easting: 868,408.03

HISTORY OF CORNER ESTABLISHMENT:

- 1833 Robert Clark set the corner.
- 1877 Joel Barber tied to the corner on a Survey filed in Book D, Page 14.
- 1990 Bruce Bowden tied to the corner and did not set a monument.
- 1996 Larry Austin reset the corner on Certified Survey Map No. 427 and prepared a Survey Monument Record.

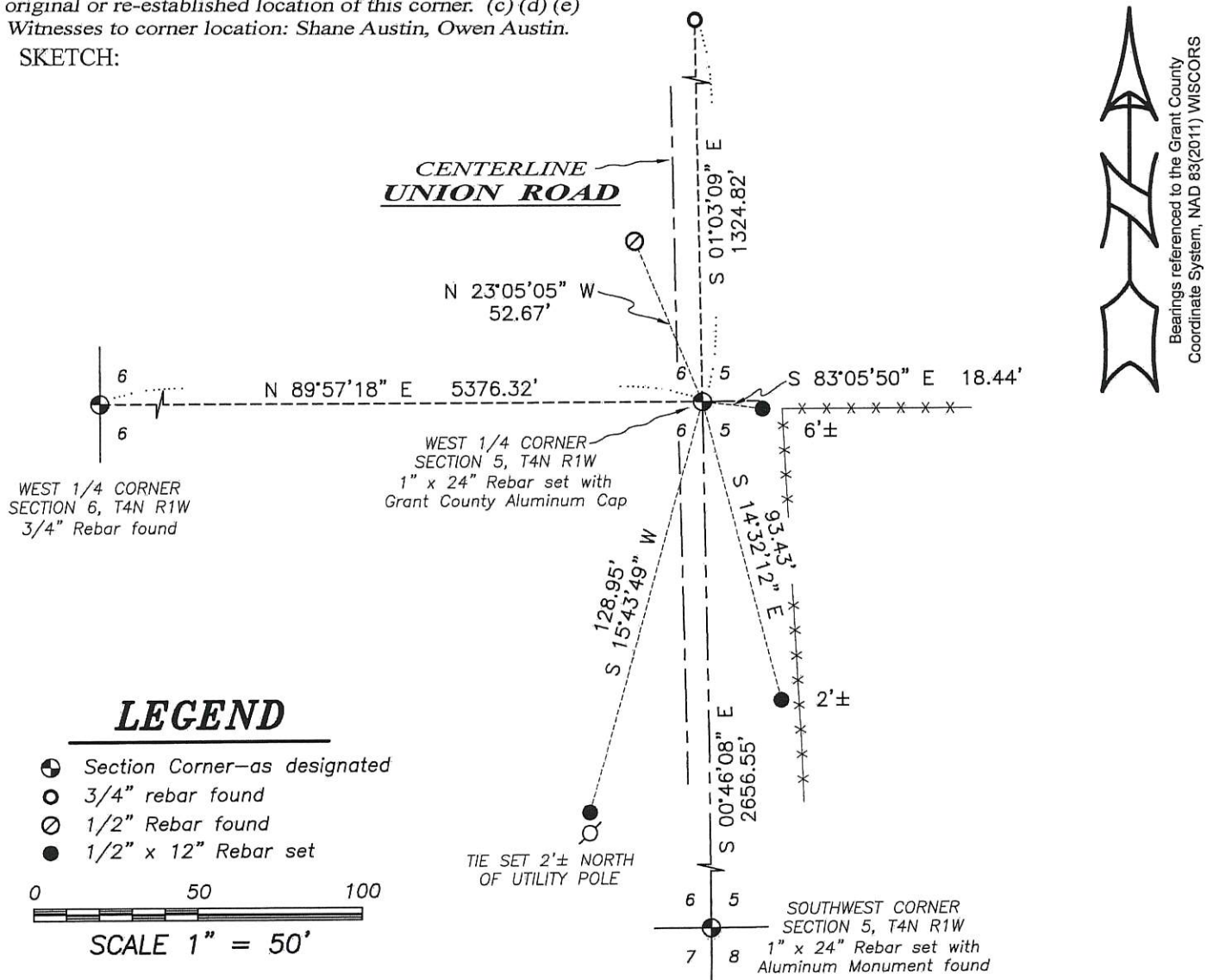
DESCRIPTION OF CORNER EVIDENCE FOUND: (b) (f) (g) (h)

I found a disturbed 3/4" Rebar at the corner location and one witness corner. I reset the corner based upon measurements to the West 1/4 corner of Section 6 and the Southeast corner of the NE 1/4 of the NE 1/4 from dimensions provided by Larry Austin for C.S.M. No. 427. This location matched the one witness corner I recovered. I set 3 additional witness corners after I verified it location with G.P.S. methods.

DESCRIPTION OF CORNER AND WITNESS MONUMENTS, references and accessories used to perpetuate the original or re-established location of this corner. (c) (d) (e)

Witnesses to corner location: Shane Austin, Owen Austin.

SKETCH:

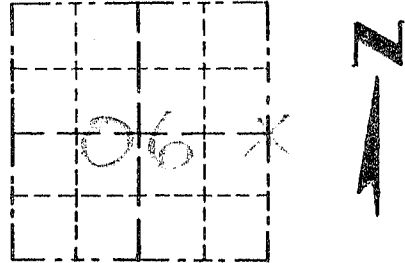


Survey Monument Record

TYPE OF MONUMENT 3/4" X 24" IRON BAR  
SET

CORNER NO. 15  
 SECTION 06  
 TOWN 3N  
 RANGE 10W

FIELD BOOK: 96-08  
 PAGE (18)



LOCATION  
 (Indicated by "X")

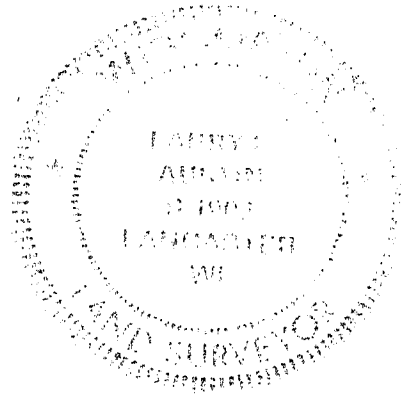
BASIS FOR MONUMENT LOCATION

(Use reverse side if necessary)

Show info such as: History of corner, with reference to Vol. and pg., dates, surveyor; exact description of monument replaced; if location computed, by taped or EDM traverse; landowner, remarks, etc.

CORNER SET IN 1833 BY ROBERT CLARK. IN 1876 JOEL BARBER MEASURED TO THE CORNER NO MONUMENT PLACED. I FOUND AN ORIGINAL BEARING TREE. THE DISTANCE TO THE BEARING TREE IS VERIFIED BY OCCUPATION FENCE TO THE EAST. I ACCEPTED THIS LOCATION AFTER VERIFICATION BY EDM TRAVERSE OF THE AREA.

SEAL:



CERTIFIED CORRECT

*Henry L. Rust*  
 Registered Land Surveyor

DATE: 1-16-98

TIE SKETCH

Show at least three (3) ties and monument

LEGEND

- ⊙ 3/4" X 24" IRON BAR SET
- 1/2" X 15" IRON BAR SET
- \*\* EXISTING FENCE

