

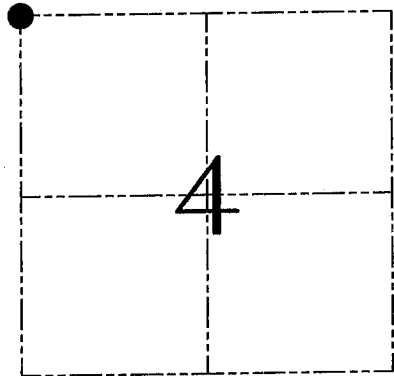
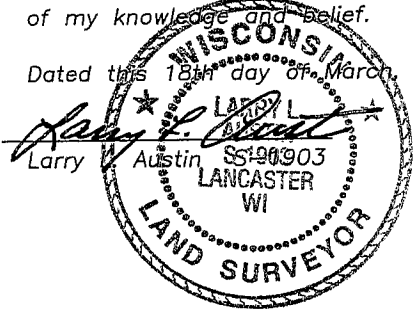
U.S. PUBLIC LAND SURVEY MONUMENT RECORD – GRANT COUNTY, WI

Section 4, Town 4 North Range 1 West, Town of Lima

CERTIFICATE

I, Larry L. Austin, do hereby certify that the corner location on this record was determined by me and/or under my direct supervision and that this U.S. public land survey monument record is correct and complete to the best of my knowledge and belief.

Dated this 18th day of March, 2005



● = CORNER LOCATION

HISTORY OF CORNER ESTABLISHMENT

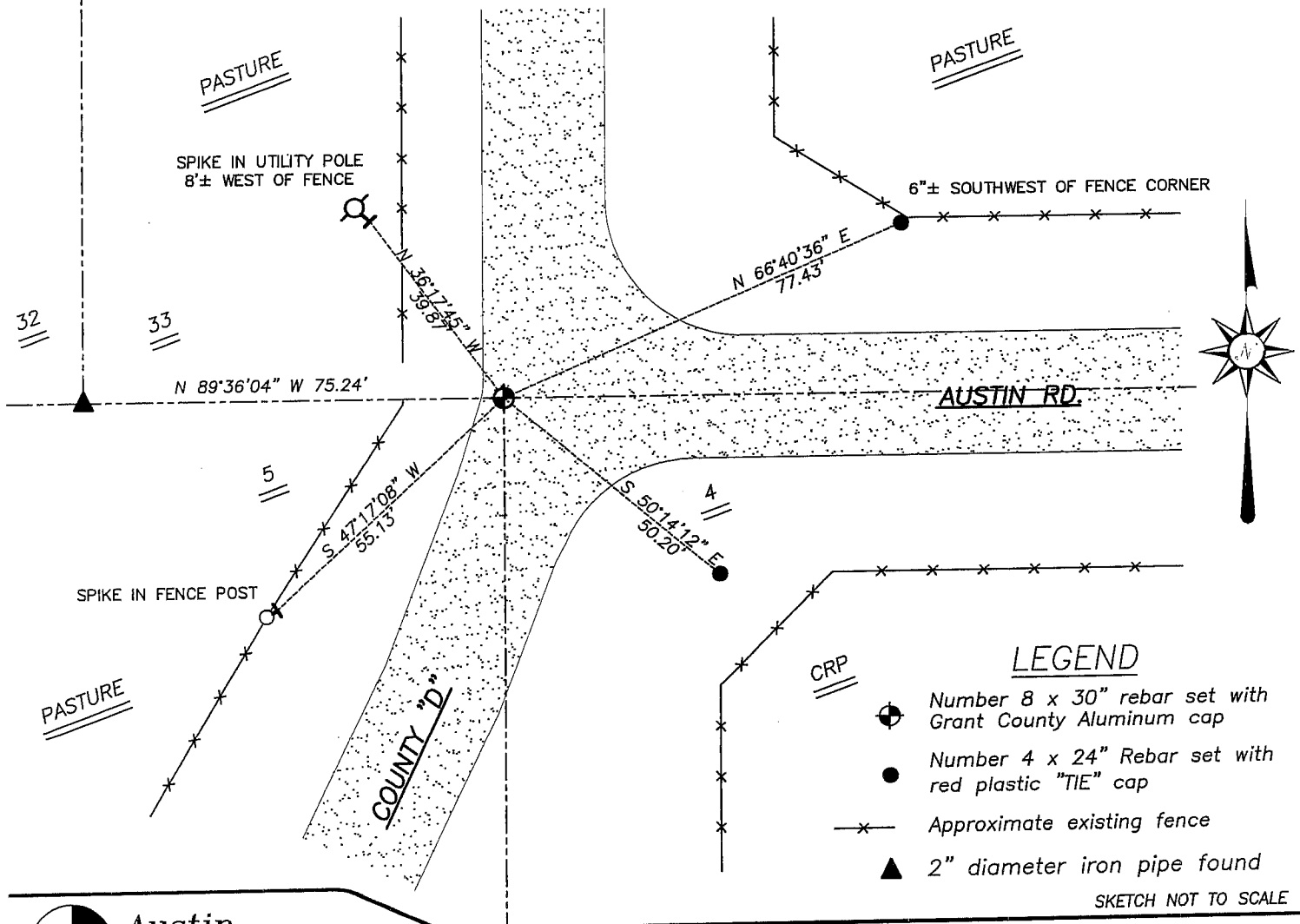
Corner was originally set in 1833 by Clark.
No other record of the corner was found.

DESCRIPTION OF CORNER EVIDENCE FOUND

I set the corner at the recorded offset from the Southwest corner and on-line between the Southwest corner and South 1/4 of Section 33, T5N R1W. Verified this location using EDM & GPS methods.

DESCRIPTION OF CORNER AND WITNESS MONUMENTS, references and accessories used to perpetuate the original or re-established location of this corner. Witnesses to corner location Bobby Sedgwick & Brad Digman & Shane Austin

SKETCH:



Austin Engineering LLC
4211 HWY 81 E, LANCASTER, WI 53813
PHONE 608-723-6363 FAX 608-723-6702

JOB NUMBER 05S039
FIELDBOOK: TDSR, 2517
G:\T5NR1W\32
H:\TIE\T4NR1W\09

DRAWN BY: BJ HAZEN
APPROVED: LL AUSTIN