

# GRANT COUNTY CERTIFIED LAND CORNER

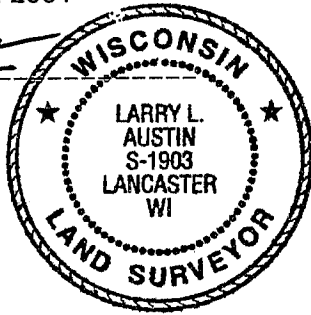
CORNER NUMBER 02

**CERTIFICATE:**

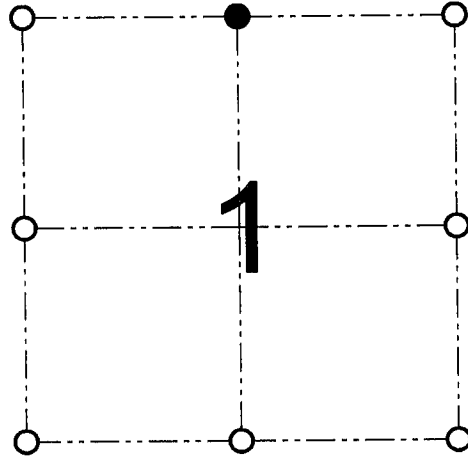
I, Larry L. Austin, do hereby certify that on the 8th day of January, 2001, I found evidence of the North 1/4 corner of Section 1, Town 4 North, Range 1 West, of the 4th Principal Meridian, and I re-established said corner according to the Wisconsin statutes as shown and described hereon.

Dated this 2nd day of February, 2001

*Larry L. Austin*  
Larry L. Austin S-1903



SEAL



● = CORNER LOCATION

NORTH 1/4 CORNER OF  
SECTION 1, T 4 N R 1 W  
TOWN OF LIMA

**HISTORY OF ORIGINAL CORNER ESTABLISHMENT:**

Corner was never originally set. In 1855 Overton tied to what was to be the original corner. In 1981 John Halverson tied to the corner and set a 1" Iron pipe. In 1988 Thomas Buck set the South 1/4 of Section 36.

**DESCRIPTION OF CORNER EVIDENCE FOUND:**

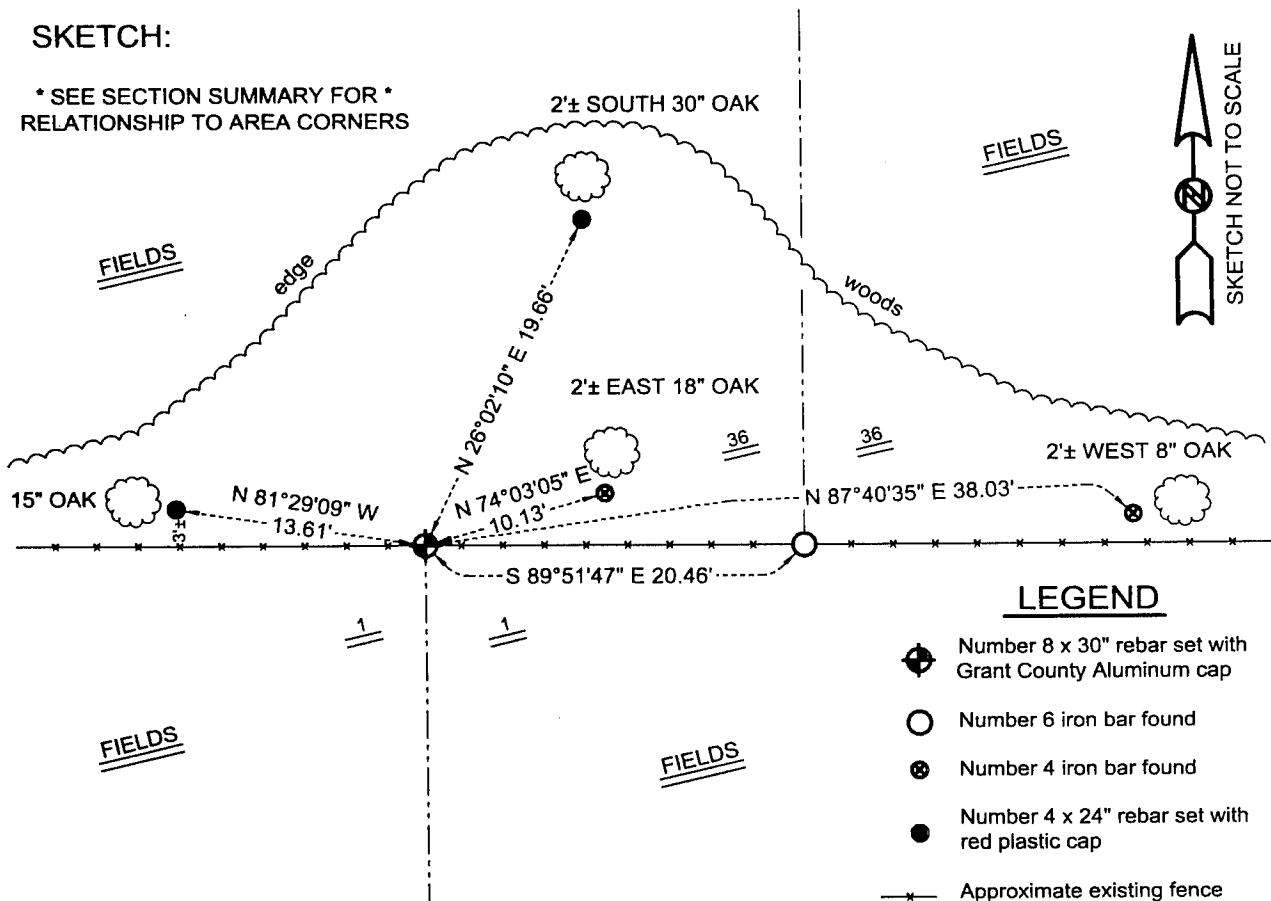
I was unable to locate the 1" Iron pipe set by Halverson. I was able to locate Buck's South 1/4 of Section 36 of T5N R1W. I reset the North 1/4 at the proportioned offset from Buck's corner. Verified this location using EDM & GPS methods.

**DESCRIPTION OF CORNER AND WITNESS MONUMENTS, references and accessories used to perpetuate the original or re-established location of this corner**

WITNESS TO THE CORNER LOCATION: SHANE AUSTIN & BOBBY SEDGWICK

**SKETCH:**

\* SEE SECTION SUMMARY FOR \*  
RELATIONSHIP TO AREA CORNERS



**LEGEND**

- Number 8 x 30" rebar set with Grant County Aluminum cap
- Number 6 iron bar found
- ⊗ Number 4 iron bar found
- Number 4 x 24" rebar set with red plastic cap
- x— Approximate existing fence

**AUSTIN ENGINEERING, LLC**  
4211 HWY 81 E, LANCASTER, WI 53813  
PHONE 608-723-6363 FAX 608-723-6702

FIELDBOOK: SDR33, 2038  
G:\T5NR1W\36B  
C:\SC14\SWA\TIE\T4NR1W\02

DRAWN BY: SW AUSTIN  
APPROVED: LL AUSTIN  
CREW: BS - SB - SA - TF