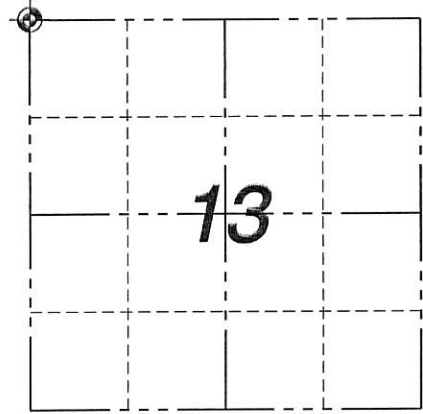


U.S. PUBLIC LAND SURVEY MONUMENT RECORD

Note: This form is intended and designed to fulfill all requirements of Wisconsin Administrative Code, Chapter A-E 5.02, U.S. Public Land Survey Monument Record (3) (a) (b) (c) (d) (e) (f) (g) (h) (i). "An additional sheet may be added if necessary to conform with said requirements."

(a) Corner location: Township 3 North
Range 6 West

Town of Cassville West, Grant County, Wisconsin.



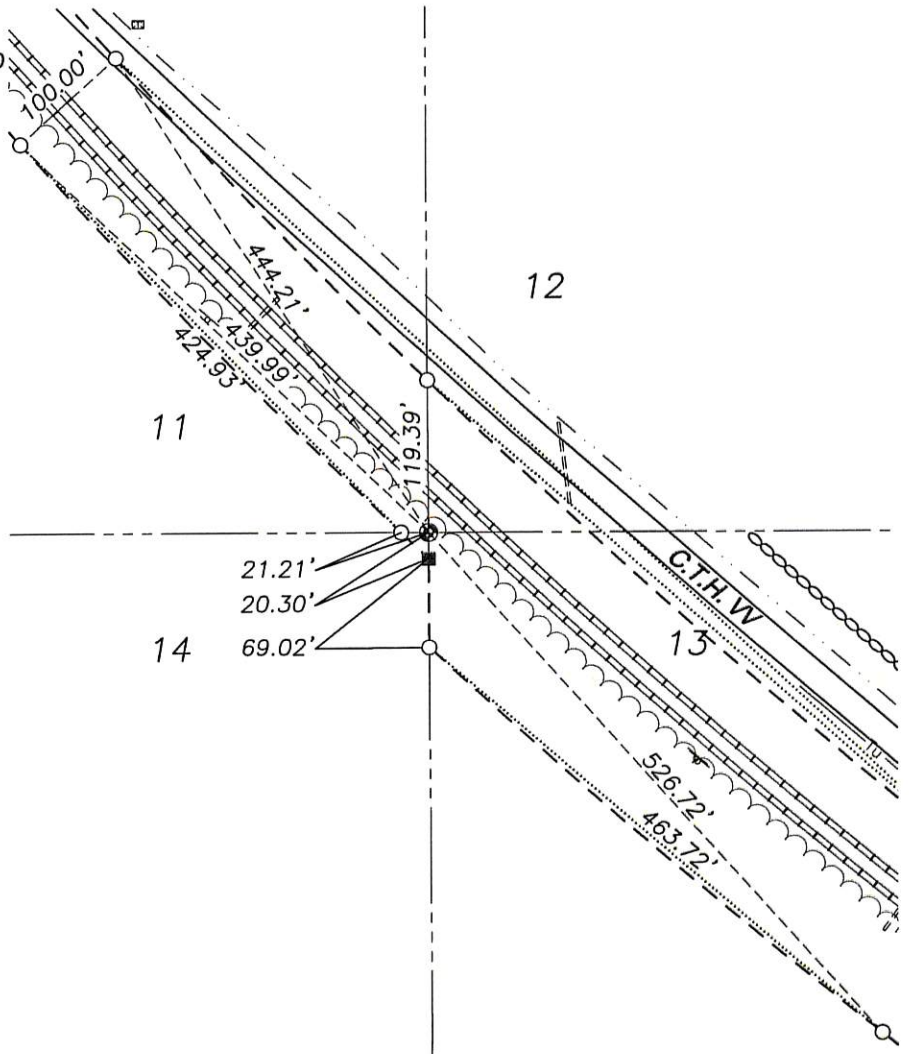
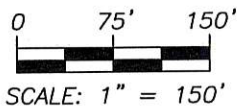
(b) (f) (g) (h) Description of monument found at this corner and if it was accepted, state all evidence (material, testimonial, occupational, plats, records, other monuments) used as a basis for accepting. If not accepted or if nothing was found, state evidence used as basis for establishing location. If reestablished through lost corner proportionate methods, indicate all monuments, distances and directions used to establish.

Corner location per Survey by U.S. Army Corp of Engineers dated 1942 for the Mississippi River Lock and Dam No. 11 Land Acquisition, Grant County, Wisconsin (9), Sheet No. 2 and 3. Set a 1-1/4"x30" rebar. Set ties as shown.

(c) (d) (e) Plan view of corner with ties to at least 4 witness monuments. If in disagreement with previously established corner, show the distances between the two corners and also indicate the ties to the disputed corner.

LEGEND

- SECTION CORNER FOUND
- 3/4" REBAR SET
- DIMENSION OF RECORD
- SECTION LINE
- U.S. ARMY CORPS OF ENGINEERS CONCRETE MONUMENT FOUND



I, John Krebs, S-1878, Registered Land Surveyor, that the corner location on this record was determined by me or under my direction and control and that this U.S. Public Land Survey Monument Record is correct and complete to the best of my knowledge and belief.

12-6-12
Date