

U.S. PUBLIC LAND SURVEY MONUMENT RECORD - GRANT COUNTY, WI

Section 12, Town 3 North Range 6 West, Town of Cassville (a)

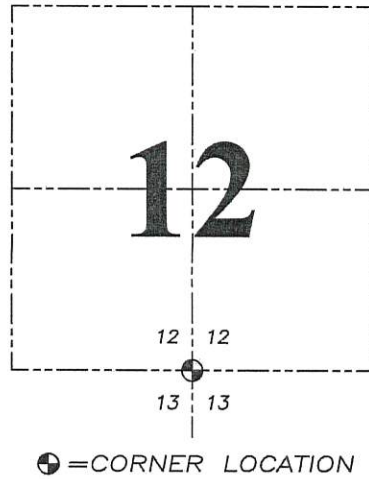
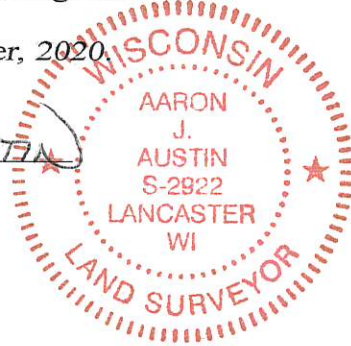
NOTE: This form is intended and designed to fulfill all requirements of the Wisconsin Administrative Code Chapter A-E 7.08, U.S. Public Land Survey Monument Record (3) (a) (b) (c) (d) (e) (f) (g) (h) (i).

CERTIFICATE: (i)

I, Aaron J. Austin, Wisconsin Professional Land Surveyor, do hereby certify that the corner location on this record was determined by me and/or under my direct supervision and that this U.S. Public Land Survey Monument Record is correct and complete to the best of my knowledge and belief.

Dated this 13th day of November, 2020.

Aaron J. Austin
 Aaron J. Austin, S-2922



Grant County Coordinates:
 NAD 83 (2011)
 Northing: 485,260.92
 Easting: 734,093.05

HISTORY OF CORNER ESTABLISHMENT:

Original corner was set in 1833 by Lucius Lyon.
 Freeman tied to the corner on a Survey dated 11/26/1842 filed in Book A, Page 124.

DESCRIPTION OF CORNER EVIDENCE FOUND: (b) (f) (g) (h)

I set a 3/4" x 18" Rebar midway and online between the Southwest and Southeast Corners of Section 12. I set four witness corners after I verified the Monument's location with G.P.S. and E.D.M. methods.

DESCRIPTION OF CORNER AND WITNESS MONUMENTS: references and accessories used to perpetuate the original or re-established location of this corner. (c) (d) (e)

Witnesses to corner location Shane Austin.
 Drawn by Owen Austin

SKETCH:

LEGEND

- ⊕ Section Corner—as designated
- 3/4" x 18" rebar set
- ⊙ Existing tree
- x-x-x- Existing fence

W O O D S

