

U.S. PUBLIC LAND SURVEY MONUMENT RECORD - GRANT COUNTY, WI

Section 12, Town 3 North Range 6 West, Town of Cassville (a)

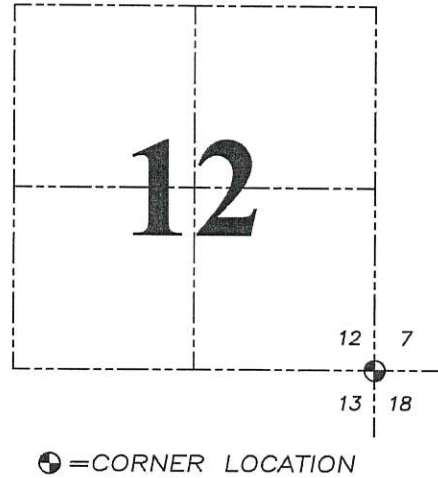
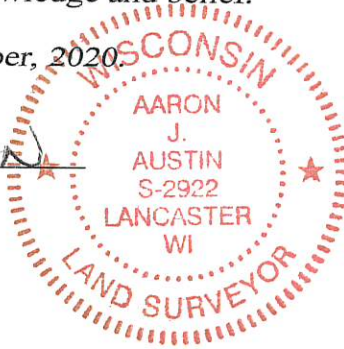
NOTE: This form is intended and designed to fulfill all requirements of the Wisconsin Administrative Code Chapter A-E 7.08, U.S. Public Land Survey Monument Record (3) (a) (b) (c) (d) (e) (f) (g) (h) (i).

CERTIFICATE: (i)

I, Aaron J. Austin, Wisconsin Professional Land Surveyor, do hereby certify that the corner location on this record was determined by me and/or under my direct supervision and that this U.S. Public Land Survey Monument Record is correct and complete to the best of my knowledge and belief.

Dated this 13th day of November, 2020.

Aaron J. Austin
Aaron J. Austin, S-2922



Grant County Coordinates:
NAD 83 (2011)
Northing: 485,254.62
Easting: 736,745.24

HISTORY OF CORNER ESTABLISHMENT:

Original corner was set in 1832 by Lucius Lyon.

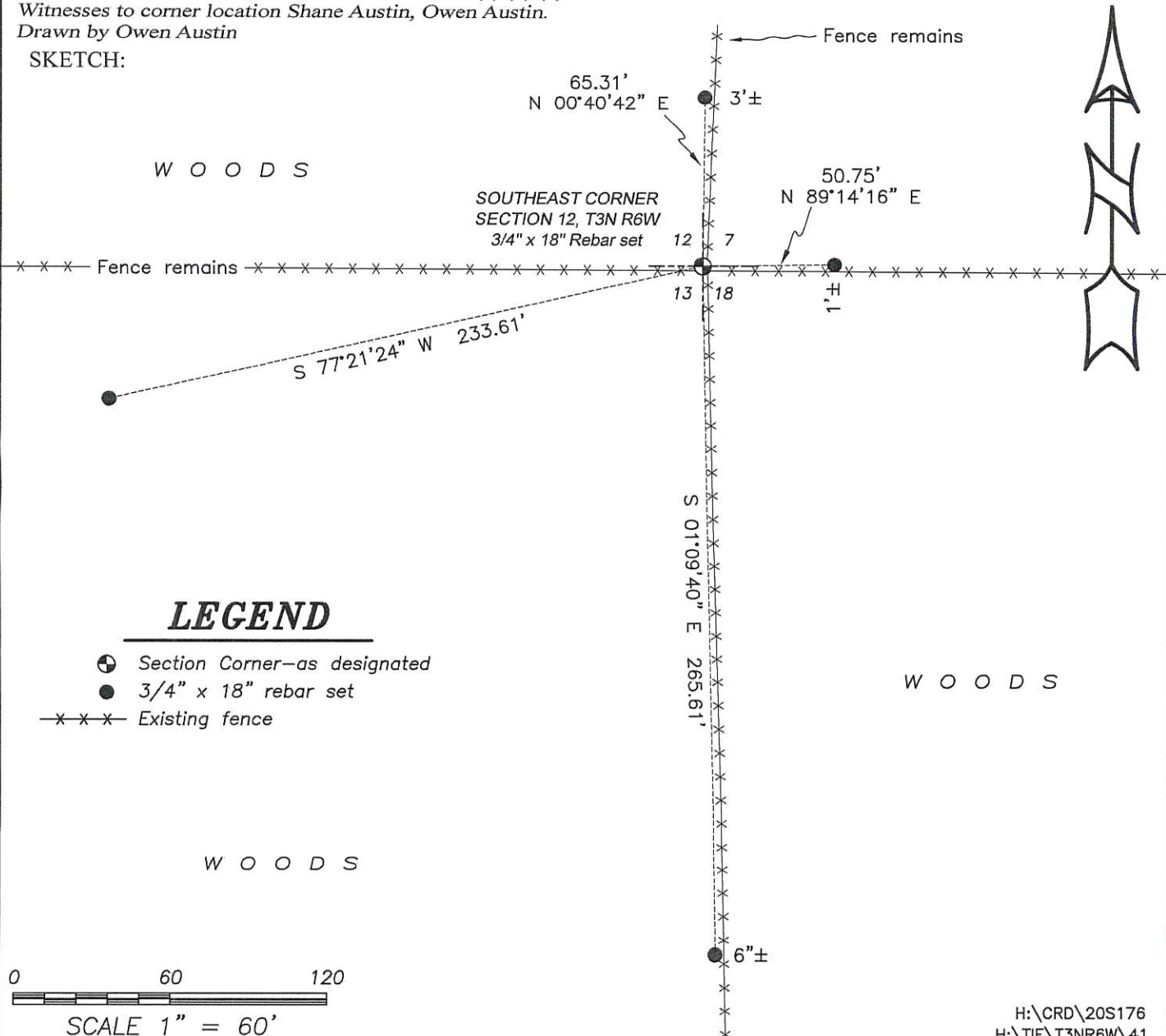
DESCRIPTION OF CORNER EVIDENCE FOUND: (b) (f) (g) (h)

A 3/4" x 24" Rebar was set at an accepted fence corner South and East with fence remnants North and West. I set four witness corners after I verified the Monuments location with G.P.S. and E.D.M. methods

DESCRIPTION OF CORNER AND WITNESS MONUMENTS, references and accessories used to perpetuate the original or re-established location of this corner. (c) (d) (e)

Witnesses to corner location Shane Austin, Owen Austin.
Drawn by Owen Austin

SKETCH:



LEGEND

- Section Corner—as designated
- 3/4" x 18" rebar set
- Existing fence

