

U.S. PUBLIC LAND SURVEY MONUMENT RECORD

Note: This form is intended and designed to fulfill all requirements of Wisconsin Administrative Code, Chapter A-E 5.02, U.S. Public Land Survey Monument Record (3) (a) (b) (c) (d) (e) (f) (g) (h) (i). "An additional sheet may be added if necessary to conform with said requirements.

(a) Corner location: Township 3 North
Range 6 West

Town of Cassville West, Grant County, Wisconsin.



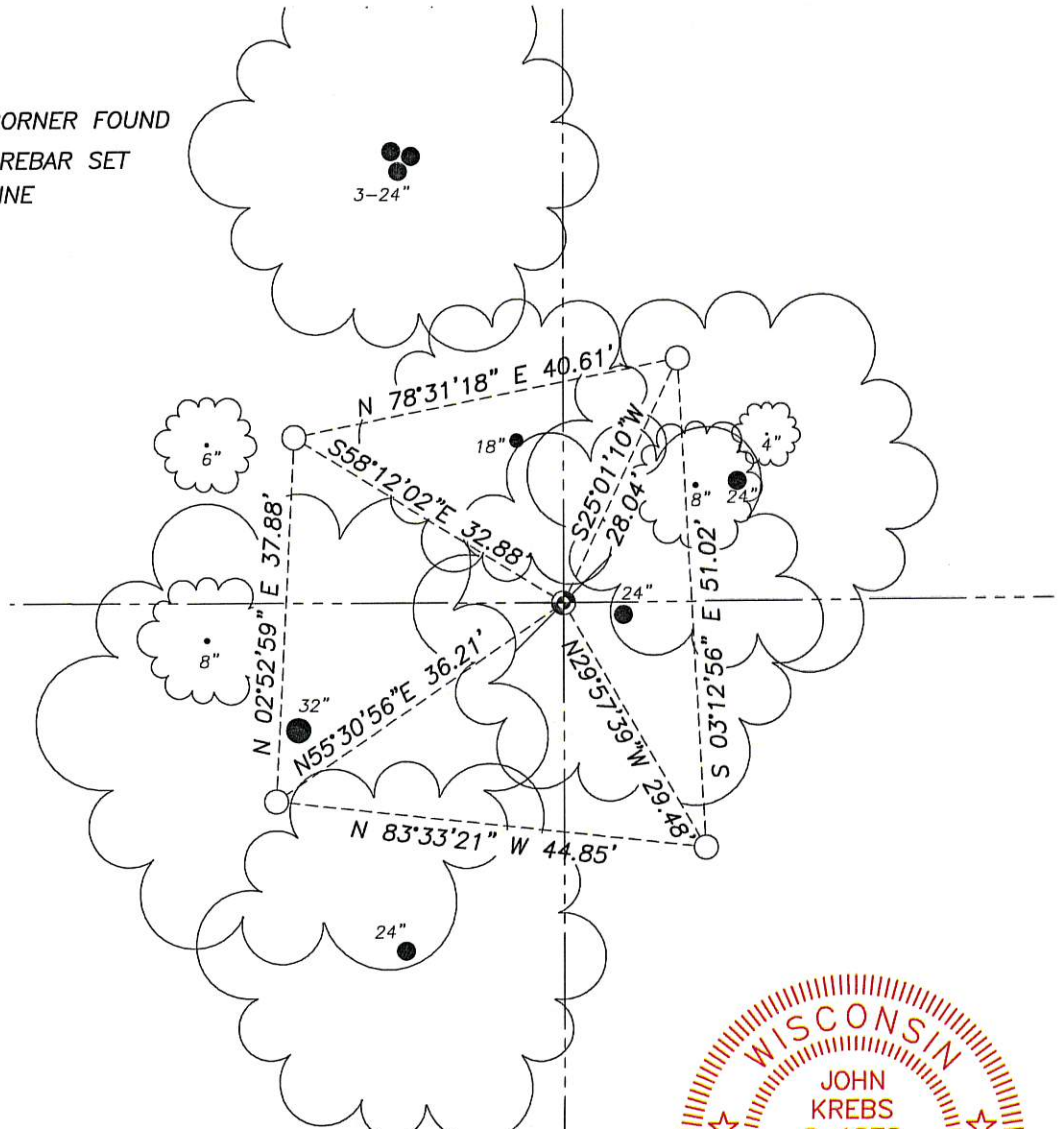
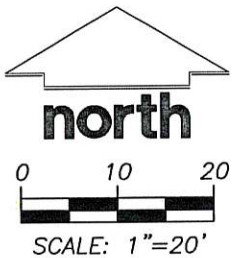
(b) (f) (g) (h) Description of monument found at this corner and if it was accepted, state all evidence (material, testimonial, occupational, plats, records, other monuments) used as a basis for accepting. If not accepted or if nothing was found, state evidence used as basis for establishing location. If reestablished through lost corner proportionate methods, indicate all monuments, distances and directions used to establish.

Found concrete monument set by the U.S. Army Corps of Engineers in 1943, as shown on a map by the U.S. Army Corps of Engineers titled "Mississippi River Lock and Dam No. 11 Land Acquisition Grant County, Wisconsin (9), Sheet 3 of 4". Set 4 ties as shown.

(c) (d) (e) Plan view of corner with ties to at least 4 witness monuments. If in disagreement with previously established corner, show the distances between the two corners and also indicate the ties to the disputed corner.

LEGEND

- SECTION CORNER FOUND
- 3/4"x24" REBAR SET
- SECTION LINE



I, John Krebs, S-1878, Registered Land Surveyor, that the corner location on this record was determined by me or under my direction and control and that this U.S. Public Land Survey Monument Record is correct and complete to the best of my knowledge and belief.

Signature Date 12-6-16

Corner No. 025

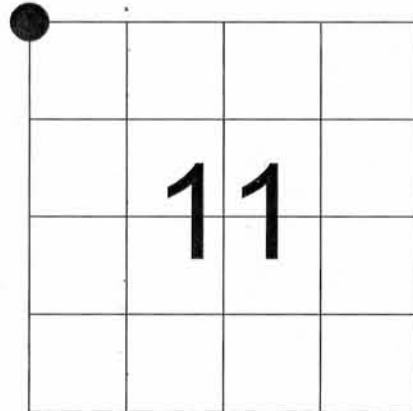
UNITED STATES PUBLIC LAND SURVEY MONUMENT RECORD -GRANT COUNTY, WI

Northwest Corner of Section 11,
Town 3 North, Range 6 West, Town of Cassville West



I HEREBY CERTIFY THAT THIS LAND SURVEYING DOCUMENT WAS PREPARED AND THE RELATED SURVEY WORK WAS PERFORMED BY ME OR UNDER MY DIRECT PERSONAL SUPERVISION AND THAT I AM A DULY LICENSED LAND SURVEYOR UNDER THE LAWS OF THE STATE OF WISCONSIN.

Kenneth L. Buesing 12, Dec. 2011
 KENNETH L. BUESING (DATE)
 LICENSE NUMBER S-2217



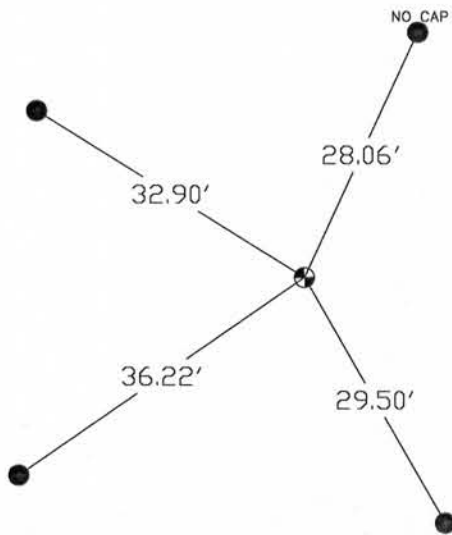
● = CORNER LOCATION

History of Corner

No records found in the county's recorder's office.

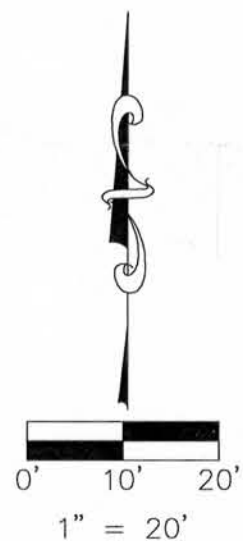
Monument Description and Remarks

Found Army Corps of Engineers Monument set in the 1940's at the NW corner with ties already in place.



LEGEND

- FOUND 5/8"Ø IRON REROD WITH ORANGE CAP JENKINS UNLESS NOTED OTHERWISE
- ⊙ FOUND ARMY CORPS OF ENGINEERS MONUMENT



DEC 14 2011

~~NOV 17 2011~~

SHEET OF	PROJECT NO. 11239		BUESING ASSOCIATES INC. ENGINEERS AND SURVEYORS 1212 LOCUST ST. DUBUQUE, IA (563) 556-4389	DATE	REVISIONS	DRAWN BY:
	LAND SURVEY MONUMENT RECORD WITNESSES TO CORNER LOCATION JOHN HERMSEN NICHOLAS LANGE			12/09/11		NWL
				SCALE:		CHECKED BY:
			1" = 20'			KLB