

U.S. PUBLIC LAND SURVEY MONUMENT RECORD - GRANT COUNTY, WI

Section 2, Town 3 North Range 6 West, Town of Cassville (a)

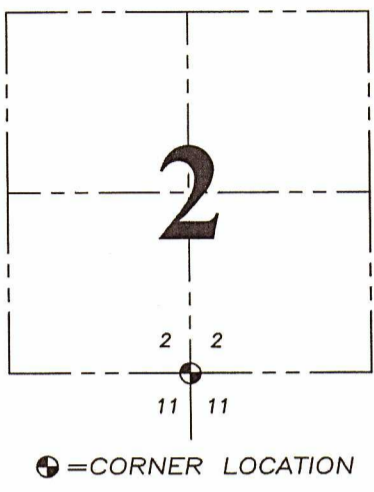
NOTE: This form is intended and designed to fulfill all requirements of the Wisconsin Administrative Code Chapter A-E 7.08, U.S. Public Land Survey Monument Record (3) (a) (b) (c) (d) (e) (f) (g) (h) (i).

CERTIFICATE: (i)

I, Aaron J. Austin, Wisconsin Professional Land Surveyor, do hereby certify that the corner location on this record was determined by me and/or under my direct supervision and that this U.S. Public Land Survey Monument Record is correct and complete to the best of my knowledge and belief.

Dated this 13th day of September, 2021.

Aaron J. Austin, S-2922



Grant County Coordinates: NAD 83 (2011) Northing: 490,540.55 Easting: 728,758.10

HISTORY OF CORNER ESTABLISHMENT:

Original corner was set in 1832 by Robert Clark. Corner was tied to on a Survey by Sampson dated 5-9-1894 Filed in Book D, Page 233.

DESCRIPTION OF CORNER EVIDENCE FOUND: (b) (f) (g) (h)

The existing fence meanders from tree to tree in this area. I set a 1 1/4" Rebar midway and online between the Southwest and the Southeast corners of Section 2. This coincides with a Survey by Buesing dated 12-12-2011 filed in Book 30, Page 57. I set four witness corners after I verified the Monument's location with G.P.S. and E.D.M. methods.

DESCRIPTION OF CORNER AND WITNESS MONUMENTS, references and accessories used to perpetuate the original or re-established location of this corner. (c) (d) (e)

Witnesses to corner location Shane Austin. Drawn by Owen Austin

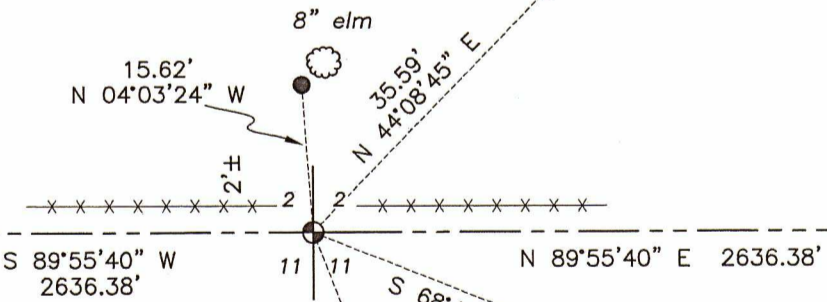
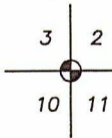
LEGEND

- Section Corner—as designated
3/4" x 18" rebar set
Existing fence
Existing tree



WOODS

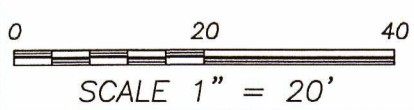
SOUTHWEST CORNER SECTION 2, T3N R6W Army Corps Monument found



SOUTH 1/4 CORNER SECTION 2, T3N R6W 1 1/4" x 24" Rebar set

SOUTHEAST CORNER SECTION 2, T3N R6W 3/4" Rebar found

WOODS



SCALE 1" = 20'