

Prepare's Name: Kenneth L. Buesing Address: 1212 Locust St. Dubuque, IA Telephone: (563) 556-4389

SLSI 9-94

UNITED STATES PUBLIC LAND SURVEY MONUMENT RECORD

OF

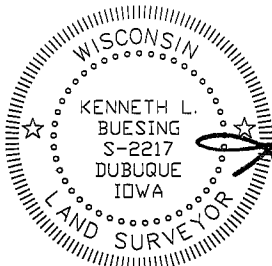
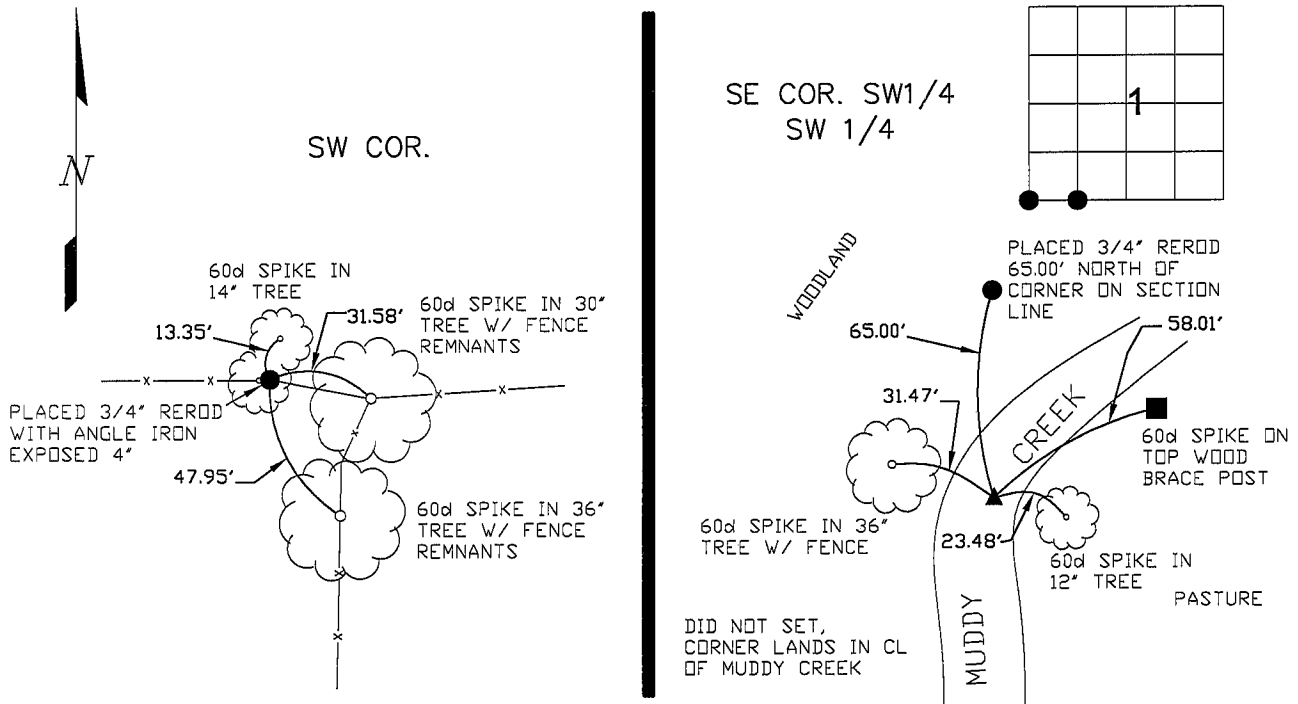
Land Survey Monuments situated in Section 1, Township 3N, Range 6W, of the Fifth Principal Meridian, GRANT County, Wisconsin. Previously recorded in _____ in County Recorder's Office.
(book, page, document number, etc.)

(Show reason for preparing this certificate, the evidence and detailed procedures used in establishing the corner positions and monumentation found or placed.)

Monument Description and Remarks: -- PLACED 3/4" x 24" REROD @ THE SW CORNER. ESTABLISHED BY EXTENDING LINE SOUTH USING THE W 1/4 AND NW COR AND INTERSECTING WITH EAST WEST FENCE LINE.
 -- PLACED 3/4" x 24" REROD @ THE SE CORNER SW 1/4 SW 1/4. ESTABLISHED BY SPLITTING THE SW COR AND S1/4. DID NOT SET CORNER. POINT LANDED IN MUDDY CREEK - SET REFERENCE REROD 65.00' NORTH ON-LINE TO NE CORNER OF THE SW1/4 SW1/4.

PLAN - VIEW

(Show a minimum of three reference ties to durable physical objects, relevant monuments and physical conditions that will enable recovery of the corner.)



I HEREBY CERTIFY THAT THIS LAND SURVEYING DOCUMENT WAS PREPARED AND THE RELATED SURVEY WORK WAS PERFORMED BY ME OR UNDER MY DIRECT PERSONAL SUPERVISION AND THAT I AM A DULY LICENSED LAND SURVEYOR UNDER THE LAWS OF THE STATE OF WISCONSIN.
 KENNETH L. BUESING
 LICENSE NUMBER S-2217
 MY LICENSE RENEWAL DATE IS DECEMBER 31, 2008

Corners	Section	Twp	Range
SW COR.	1	3N	6W
SE COR. SW 1/4 SW 1/4	1	3N	6W

BUESING & ASSOCIATES INC. ENGINEERS AND SURVEYORS 1212 LOCUST ST, DUBUQUE, IA (563) 556-4389	MONUMENT RECORD		
	COUNTY: <u>GRANT</u>	TOWNSHIP: <u>WEST PART CASSVILLE</u>	
DATE PLOTTED: <u>1-3-07</u>	FIELD BOOK # <u>168</u>	DRAWING # <u>05251-SEC TIES</u>	
DATE REVISED:	PAGE # <u>19 & 20</u>		