

36020

# U.S. PUBLIC LAND SURVEY MONUMENT RECORD - GRANT COUNTY, WI

Section 1, Town 3 North Range 6 West, Town of Cassville (a)

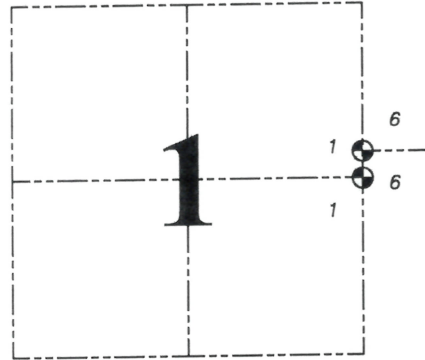
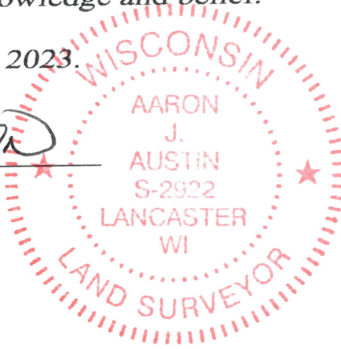
NOTE: This form is intended and designed to fulfill all requirements of the Wisconsin Administrative Code Chapter A-E 7.08, U.S. Public Land Survey Monument Record (3) (a) (b) (c) (d) (e) (f) (g) (h) (i).

### CERTIFICATE: (i)

I, Aaron J. Austin, Wisconsin Professional Land Surveyor, do hereby certify that the corner location on this record was determined by me and/or under my direct supervision and that this U.S. Public Land Survey Monument Record is correct and complete to the best of my knowledge and belief.

Dated this 31st day of March, 2023.

*Aaron J. Austin*  
Aaron J. Austin, S-2922



● = CORNER LOCATION

Grant County Coordinates:  
NAD 83 (2011)  
Northing: 493,207.03  
Easting: 736,710.55

### HISTORY OF CORNER ESTABLISHMENT:

Original corner was set in 1833 by Lucius Lyon.  
There was a found Stone on a Survey filed in Book D, Page 234.

### DESCRIPTION OF CORNER EVIDENCE FOUND: (b) (f) (g) (h)

I set a 7/8" x 24" Rebar at the projection of fence corners from the East and the North. I set four witness corners after I verified the Monument's location with G.P.S. and E.D.M. methods.

### DESCRIPTION OF CORNER AND WITNESS MONUMENTS, references and accessories used to perpetuate the original or re-established location of this corner. (c) (d) (e)

Witnesses to corner location Owen Austin, Tanner Austin.

Drawn by: Owen Austin.

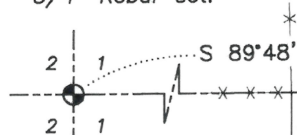
SKETCH:

## LEGEND

- Section Corner—as designated
- 3/4" x 18" rebar set
- x-x-x- Existing fence

DISTANCE BETWEEN SECTION CORNERS  
N 01°28'37" W 7.26'

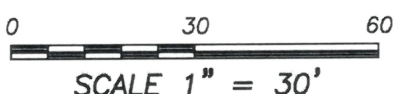
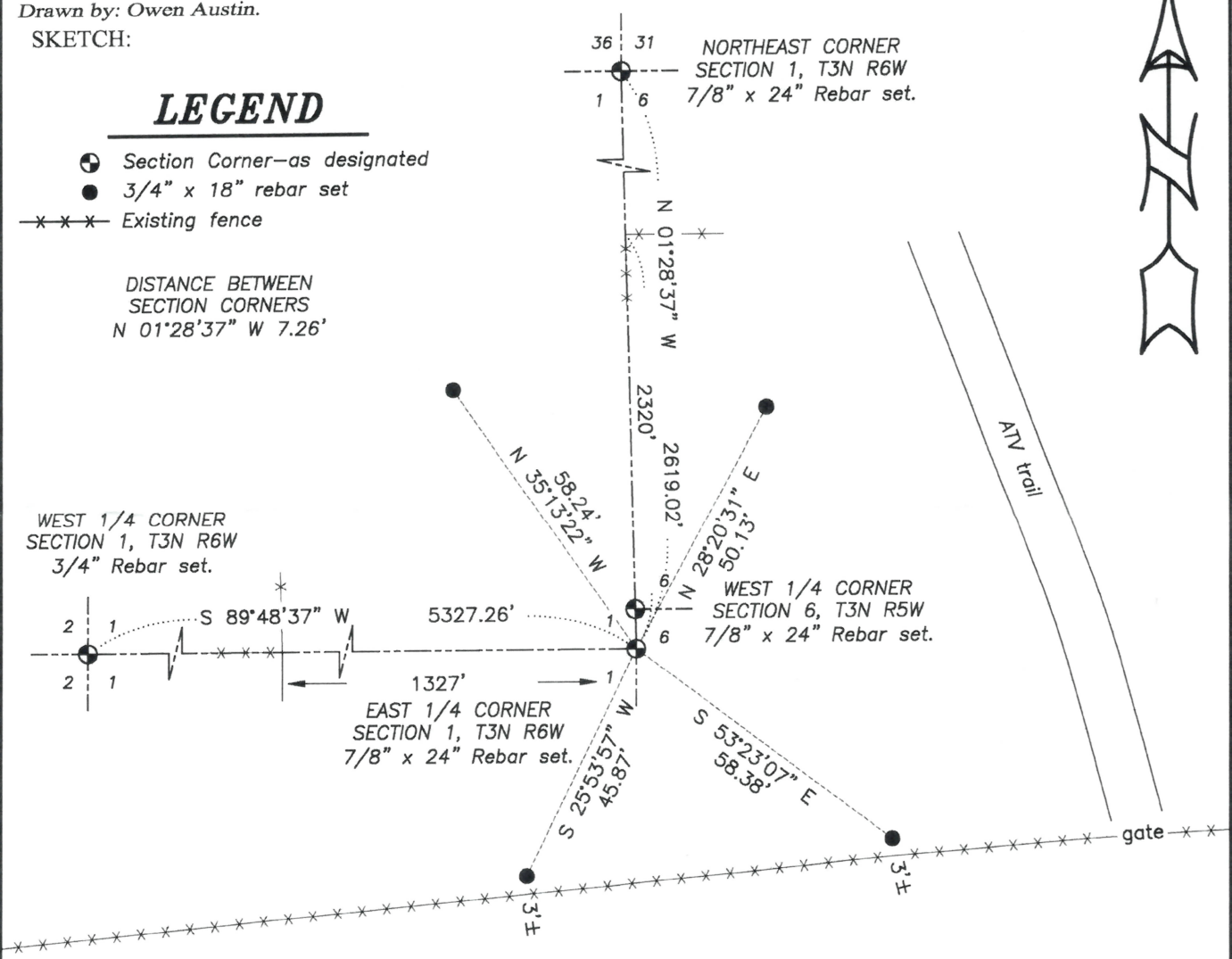
WEST 1/4 CORNER  
SECTION 1, T3N R6W  
3/4" Rebar set.



EAST 1/4 CORNER  
SECTION 1, T3N R6W  
7/8" x 24" Rebar set.

WEST 1/4 CORNER  
SECTION 6, T3N R5W  
7/8" x 24" Rebar set.

NORTHEAST CORNER  
SECTION 1, T3N R6W  
7/8" x 24" Rebar set.



SCALE 1" = 30'

F I E L D