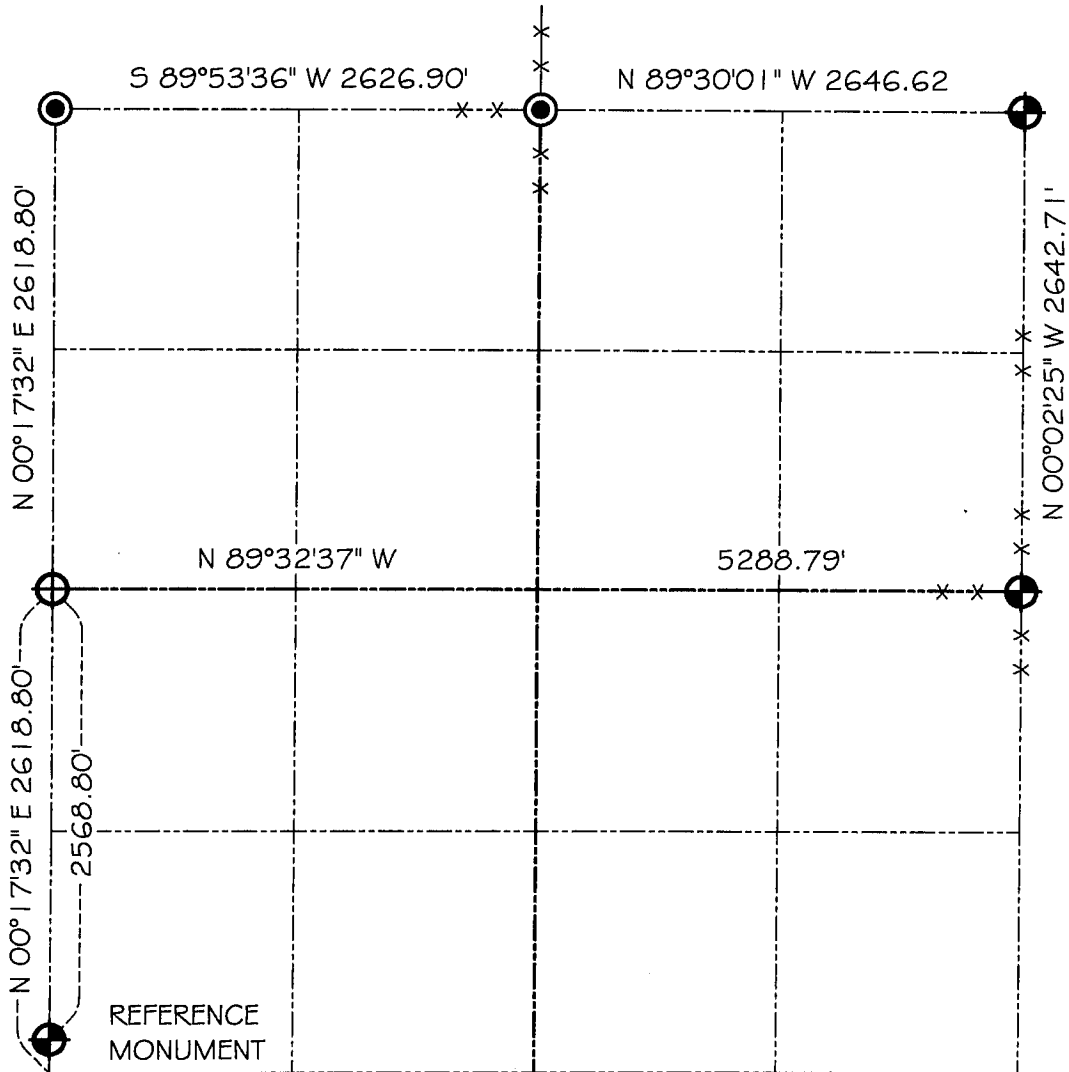







# GRANT COUNTY

## SECTION SUMMARY

$\frac{26}{\text{SECTION}} - \frac{3N}{\text{TOWN}} - \frac{5W}{\text{RANGE}}$



### LEGEND

-  NO. 8 X 30" REBAR SET WITH GRANT COUNTY ALUMINUM CAP
-  GRANT COUNTY ALUMINUM MONUMENT FOUND
-  NO. 6 REBAR FOUND

### NOTE:

Relationships of all section corners to other section corners shall be shown hereon by bearing and distance or grid coordinates  
 Show or describe bearing reference



Bearings referenced to the East-West Quarter line of Section 26, which is assumed to Bear N 89°32'37" W.