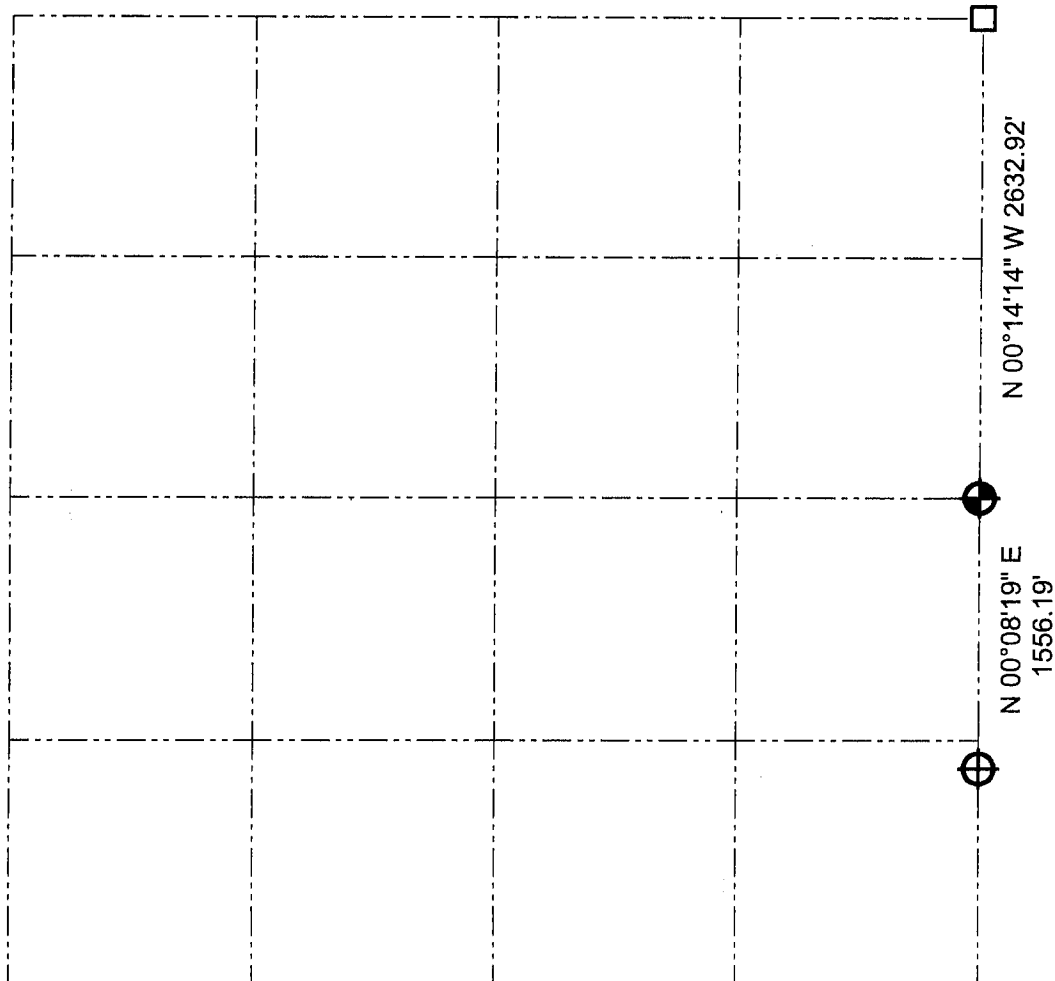





# GRANT COUNTY SECTION SUMMARY

$\frac{19}{\text{SECTION}} - \frac{3N}{\text{TOWN}} - \frac{5W}{\text{RANGE}}$



### LEGEND

-  Number 8 x 30" rebar set with Grant County Aluminum Cap
-  1" Iron bar found
-  Army Corp monument found

### NOTE:

Relationships of all section corners to other section corners shall be shown hereon by bearing and distance or grid coordinates.  
~Bearing reference below~



Bearings referenced to the East line of the Northeast Quarter of Section 19, which is assumed to bear N 00°14'14" W.

**AUSTIN ENGINEERING, LLC**  
4211 HWY 81 E, LANCASTER, WI 53813  
PHONE 608-723-6363 FAX 608-723-6702

FIELDBOOK: SDR33, 2008  
G:\CASSVILLE\WALZ  
C:\SC14\SWA\TIE\T3NR5W\19SUM

DRAWN BY: SW AUSTIN  
APPROVED: LL AUSTIN  
CREW: BS - SB - SA - TF