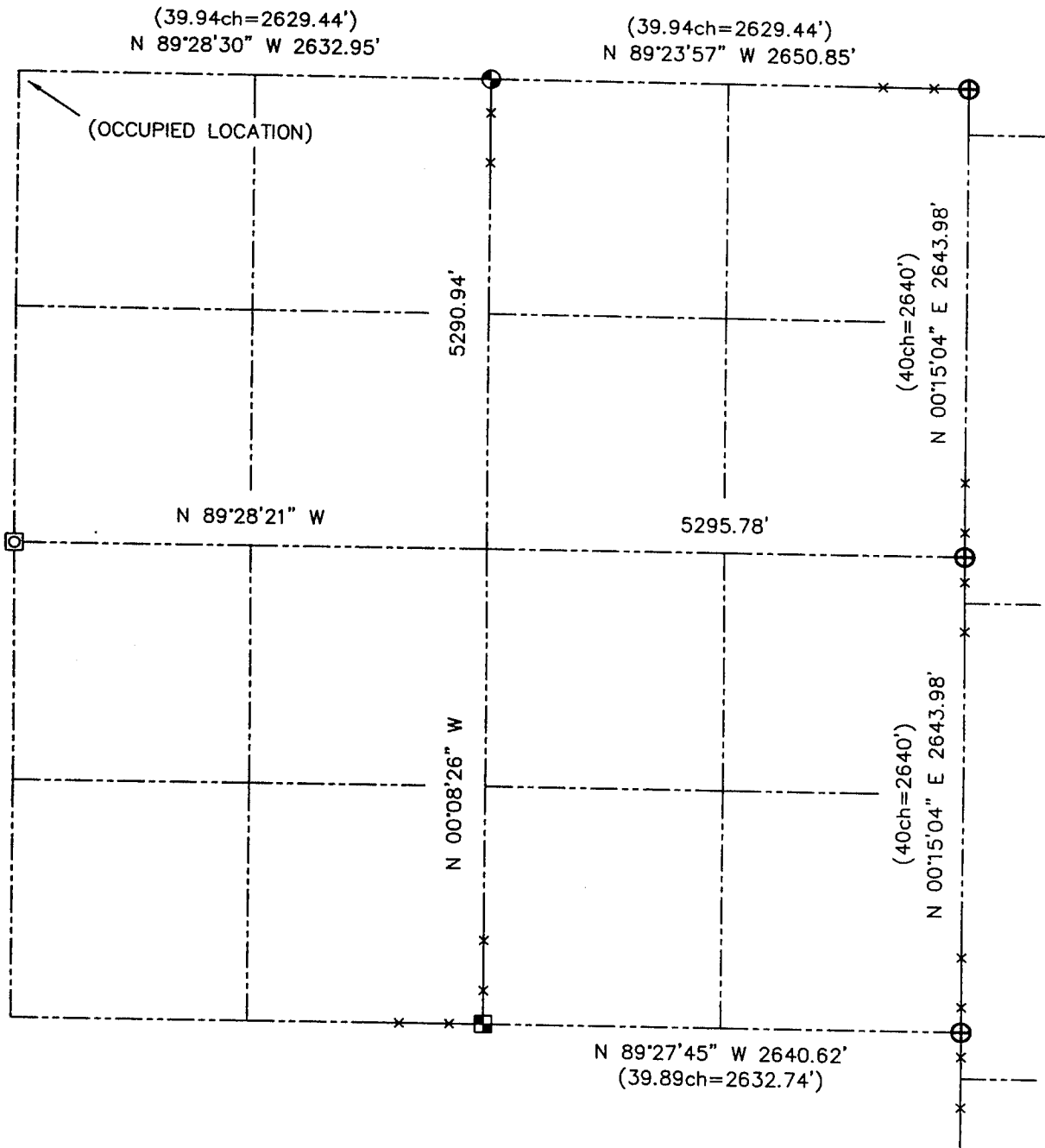


U.S. PUBLIC LAND SURVEY MONUMENT RECORD – GRANT COUNTY, WI
Summary of Section 13, Town 3 North, Range 5 West, Town of Cassville

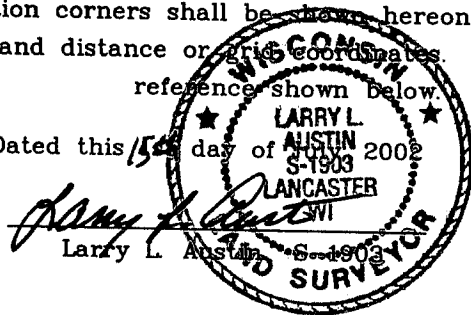


LEGEND

- ⊕ No. 8 rebar found with Grant County Aluminum Cap
- ⊙ No. 8 x 30" rebar set with Grant County Aluminum Cap – wt=2.67#/l.f.
- ⊠ No. 6 rebar found with Grant County Aluminum Cap
- < > Recorded as
- x— Approximate location of existing fence
- Aluminum Monument found with Grant County Aluminum Cap

Relationship of all section corners to other section corners shall be shown hereon by bearing and distance or grid coordinates. Bearing reference shown below.

Dated this 15th day of August 2002



Bearings referenced to the East-West Quarter line of this Section, which is assumed to bear N 89°28'21" W.

SKETCH NOT TO SCALE

AUSTIN ENGINEERING, LLC
 4211 HWY 81 EAST, LANCASTER, WI 53813
 PHONE 608-723-6363 FAX 608-723-6702

FIELDBOOK: SDR33, 2228
 G: \T3NR4W\133
 C: \SWA\TIE\T3NR5W\13SUM

CREW: BS-SB-SA-BD
 DRAWN BY: SW AUSTIN
 APPROVED: LL AUSTIN