

# GRANT COUNTY CERTIFIED LAND CORNER

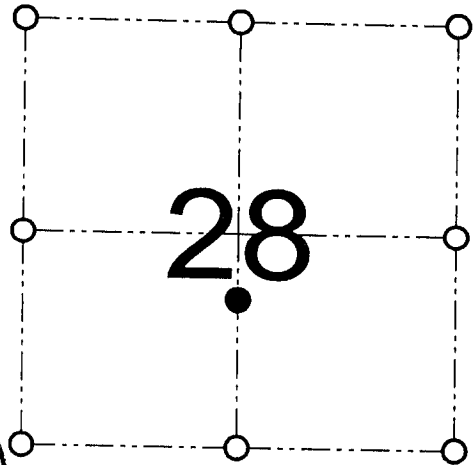
CORNER NUMBER 108  
REFERENCE MONUMENT

**CERTIFICATE:**

I, Larry L. Austin, do hereby certify that on the 14th day of September, 2000, I found evidence of the Reference monument for the South 1/4 corner of Section 28, Town 3 North, Range 5 West, of the 4th Principal Meridian, and I re-established said corner according to the Wisconsin statutes as shown and described hereon.

Dated this 8th day of November, 2000

*Larry L. Austin*  
Larry L. Austin S-1903



● = REFERENCE MONUMENT

REFERENCE MONUMENT FOR THE  
SOUTH 1/4 CORNER OF  
SECTION 28, T 3 N R 5 W  
TOWN OF CASSVILLE

**HISTORY OF ORIGINAL CORNER ESTABLISHMENT:**

Corner was never originally set.  
In 1955 Homer Ralph set a reference monument for many surveys.

**DESCRIPTION OF CORNER EVIDENCE FOUND:**

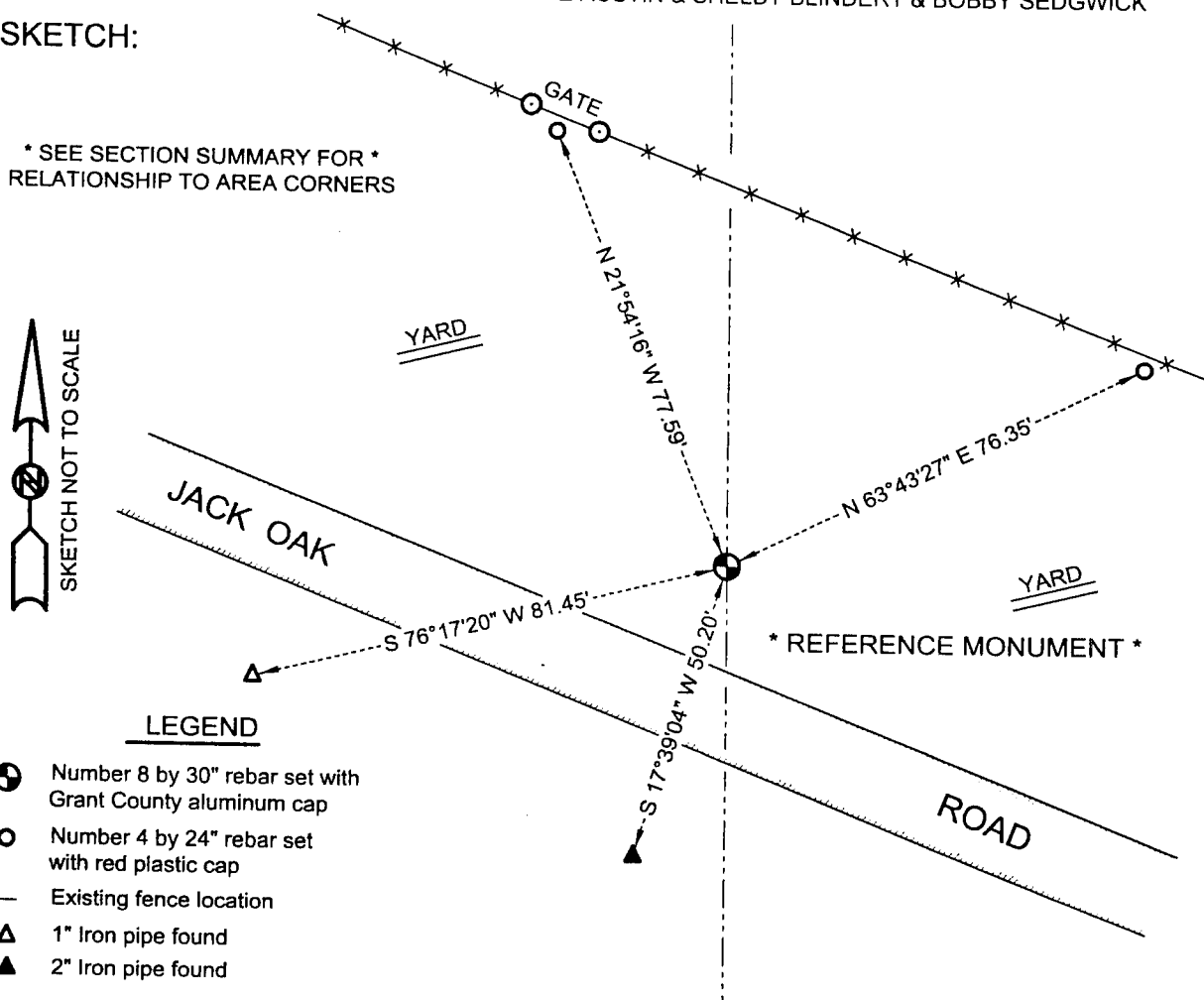
I found corners of Ralph's surveys and retraced the location of his reference monument. Verified it's location using EDM & GPS methods.

**DESCRIPTION OF CORNER AND WITNESS MONUMENTS, references and accessories used to perpetuate the original or re-established location of this corner**

WITNESS TO THE CORNER LOCATION: SHANE AUSTIN & SHELBY BLINDERT & BOBBY SEDGWICK

**SKETCH:**

\* SEE SECTION SUMMARY FOR \*  
RELATIONSHIP TO AREA CORNERS



**LEGEND**

- Number 8 by 30" rebar set with Grant County aluminum cap
- Number 4 by 24" rebar set with red plastic cap
- X— Existing fence location
- ▲ 1" Iron pipe found
- ▲ 2" Iron pipe found