

GRANT COUNTY CERTIFIED LAND CORNER

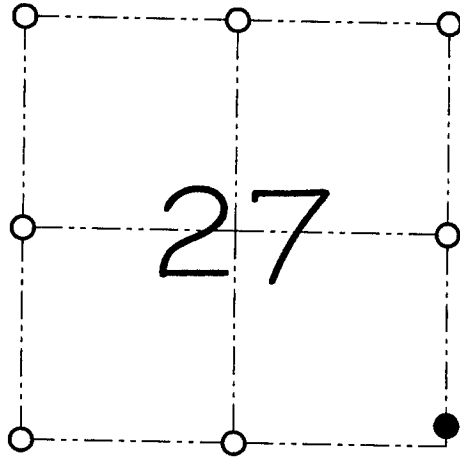
CORNER NUMBER 105
REFERENCE MONUMENT

CERTIFICATE:

I, Larry L. Austin, do hereby certify that on the 10th day of July, 2000, I found evidence of the Reference monument for the Southeast corner of Section 27, Town 3 North, Range 5 West, of the 4th Principal Meridian, and I re-established said corner according to the Wisconsin statutes as shown and described hereon.

Dated this 28th day of July, 2000

Larry L. Austin S-1903

● = REFERENCE MONUMENT

REFERENCE MONUMENT OF THE
SOUTHEAST CORNER OF
SECTION 27, T 3 N R 5 W
TOWN OF CASSVILLE

HISTORY OF ORIGINAL CORNER ESTABLISHMENT:

Corner was originally set in 1833 by Lucius Lyon.
In the 1940's the Army Corp. of Engineers tied to the corner.

DESCRIPTION OF CORNER EVIDENCE FOUND:

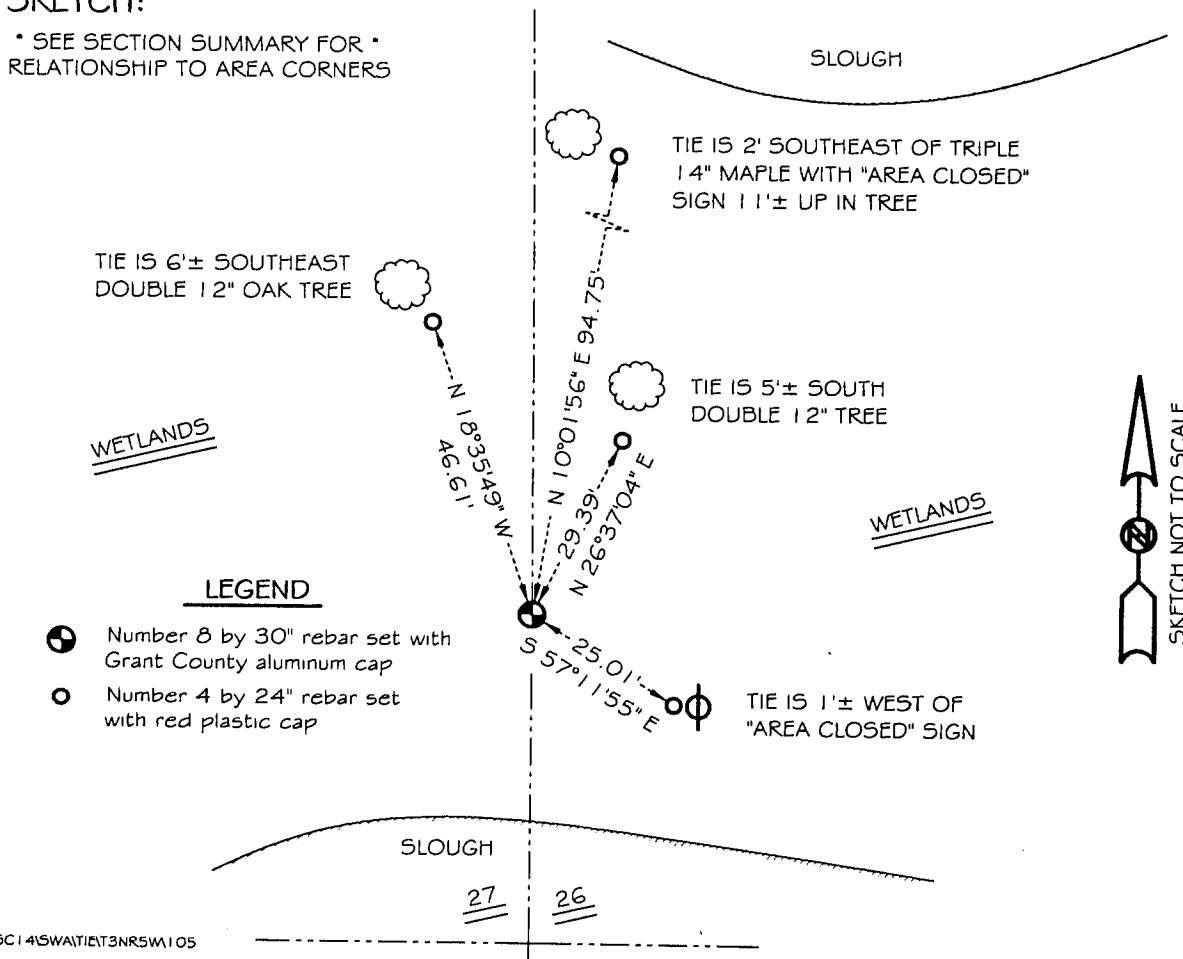
I reset the corner based on the surveying that was performed for the Army Corp. of Engineers. This location fit well with area corners. Verified this location using EDM & GPS methods.

DESCRIPTION OF CORNER AND WITNESS MONUMENTS, references and accessories used to perpetuate the original or re-established location of this corner

WITNESS TO THE CORNER LOCATION: SHANE AUSTIN & JERRY SPEILMAN

SKETCH:

• SEE SECTION SUMMARY FOR •
RELATIONSHIP TO AREA CORNERS



LEGEND

- Number 8 by 30" rebar set with Grant County aluminum cap
- Number 4 by 24" rebar set with red plastic cap