

# GRANT COUNTY CERTIFIED LAND CORNER

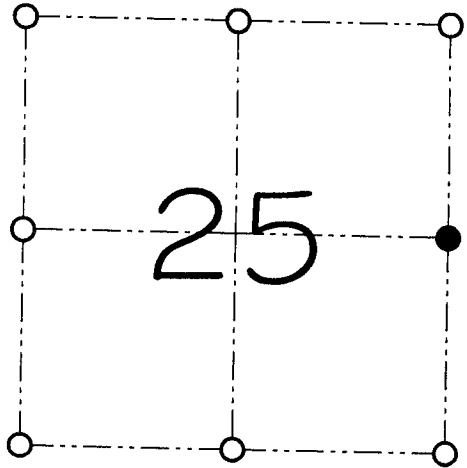
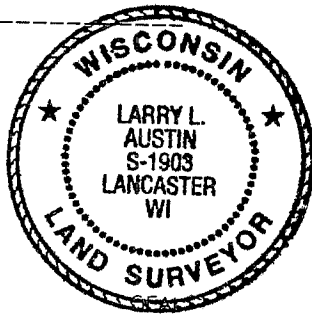
CORNER NUMBER 100

**CERTIFICATE:**

I, Larry L. Austin, do hereby certify that on the 7th day of July, 2000, I found no evidence of the East 1/4 corner of Section 25, Town 3 North, Range 5 West, of the 4th Principal Meridian, and I re-established said corner according to the Wisconsin statutes as shown and described hereon.

Dated this 28th day of July, 2000

*Larry L. Austin*  
Larry L. Austin S-1903



● = CORNER LOCATION  
EAST 1/4 CORNER OF SECTION 25, T 3 N R 5 W TOWN OF CASSVILLE

**HISTORY OF ORIGINAL CORNER ESTABLISHMENT:**

Corner was originally set in 1832 by Lucius Lyon.  
Barber and Wilson tied to the corner on different occasions.

**DESCRIPTION OF CORNER EVIDENCE FOUND:**

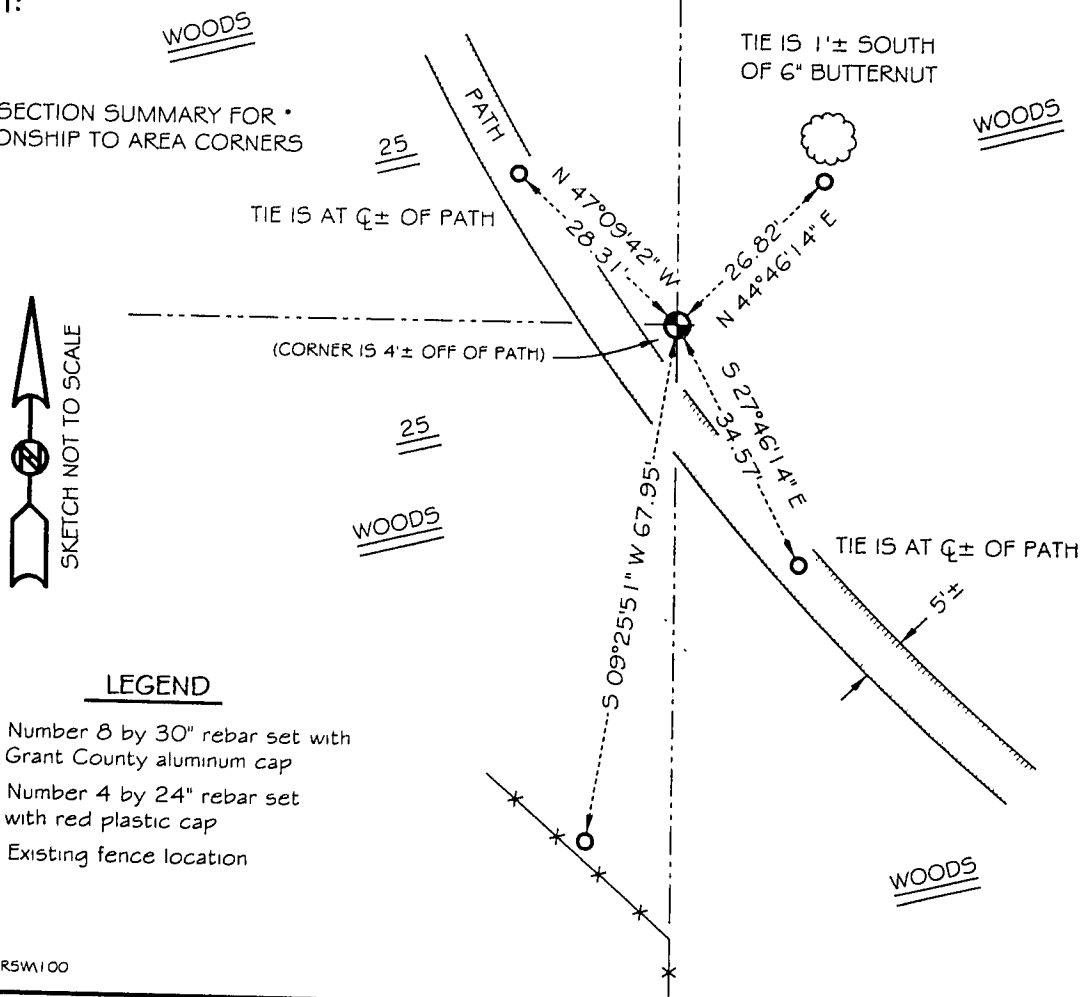
I found an occupied West 1/4 corner of Section 30 and set the East 1/4 corner of Section 25 at the proportioned offset. Verified it's location using EDM & GPS methods.

**DESCRIPTION OF CORNER AND WITNESS MONUMENTS, references and accessories used to perpetuate the original or re-established location of this corner**

WITNESS TO THE CORNER LOCATION: SHANE AUSTIN & BOBBY SEDGWICK

**SKETCH:**

• SEE SECTION SUMMARY FOR •  
RELATIONSHIP TO AREA CORNERS



**LEGEND**

- Number 8 by 30" rebar set with Grant County aluminum cap
- Number 4 by 24" rebar set with red plastic cap
- \*— Existing fence location