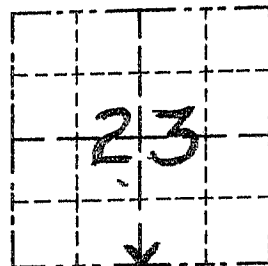


GRANT COUNTY

Survey Monument Record

TYPE OF MONUMENT 3/4" x 24" RD. SOLID BAR
 STATE PLANE COORDINATES: N _____
 E _____
 ELEVATION — M.S.L. DATUM: _____
 THETA ANGLE: _____
 FIELD BOOK: 9506
 PAGE 23

CORNER NO. 84
 SECTION 23
 TOWN 3 N
 RANGE 5 W
S 1/4 COR.



LOCATION
 (Indicated by "X")

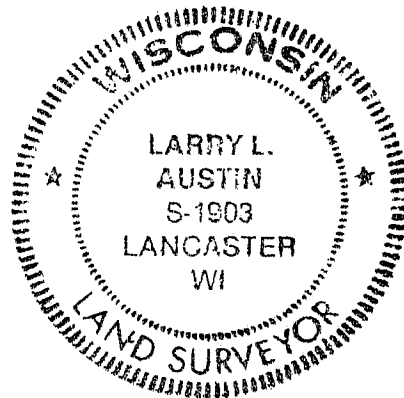
BASIS FOR MONUMENT LOCATION

(Use reverse side if necessary)

Show info such as: History of corner, with reference to Vol. and pg., dates, surveyor; exact description of monument replaced; if location computed, by taped or EDM traverse; landowner, remarks, etc.

SEAL:

CORNER ORIGINALLY SET IN 1833 BY LUCIUS LYON; CORNER WAS USED BY RICHARD MARKS ON C.S.M. #298; NO TIE SHEET FOUND; I RE-ESTABLISHED THE CORNER BASED ON FOUND MONUMENTATION OF THE C.S.M.; THIS FITS OCCUPATION WELL, VERIFIED BY EDM TRAVERSE IN THE AREA



CERTIFIED CORRECT

Larry L. Austin
 Registered Land Surveyor

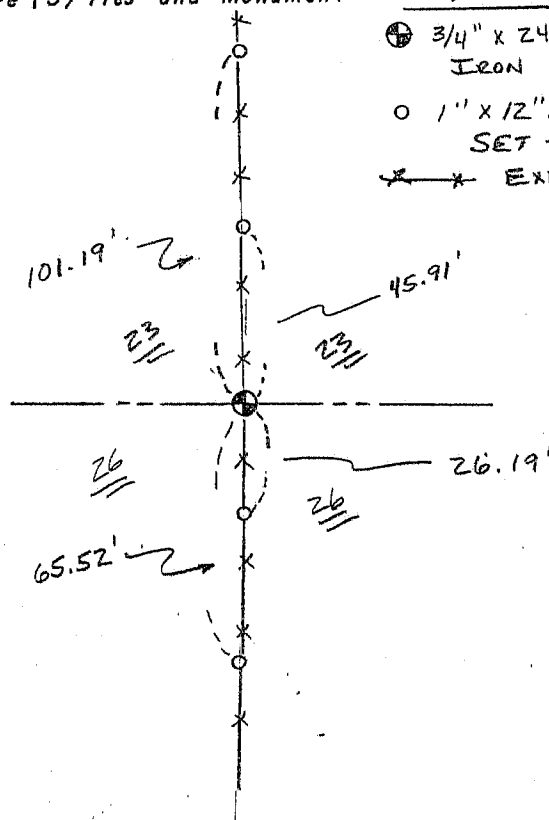
DATE: 6/30/95

TIE SKETCH

Show at least three (3) ties and monument

LEGEND

- ⊕ 3/4" x 24" RD. SOLID IRON BAR SET
- 1" x 12" MIN. IRON PIPE SET = TIES
- X — EXISTING FENCE



NO SCALE