

GRANT COUNTY CERTIFIED LAND CORNER

SHEET 1 OF 2

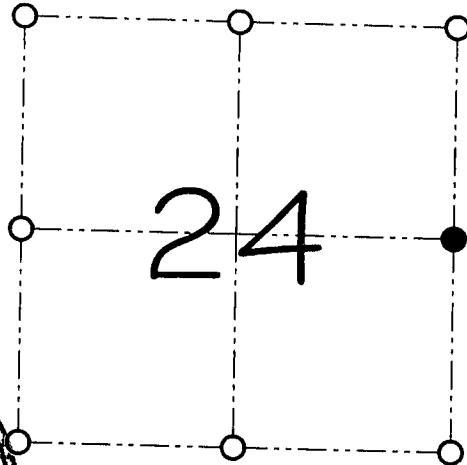
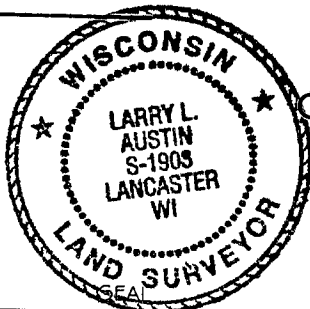
CORNER NUMBER 80

CERTIFICATE:

I, Larry L. Austin, do hereby certify that on the 30th day of June, 2000, I found no evidence of the East 1/4 corner of Section 24, Town 3 North, Range 5 West, of the 4th Principal Meridian, and I re-established said corner according to the Wisconsin statutes as shown and described hereon.

Dated this 28th day of July, 2000

Larry L. Austin
Larry L. Austin S-1903



● = CORNER LOCATION

EAST 1/4 CORNER OF
SECTION 24, T 3 N R 5 W
TOWN OF CASSVILLE

HISTORY OF ORIGINAL CORNER ESTABLISHMENT:

Corner was set in 1832 by Lucius Lyon,
Sampson, Barber, and Overton tied to the original corner.

DESCRIPTION OF CORNER EVIDENCE FOUND:

I reset the corner proportionately between the Northeast and Southeast corners of Section 24. Verified this location using EDM & GPS methods.

DESCRIPTION OF CORNER AND WITNESS MONUMENTS, references and accessories used to perpetuate the original or re-established location of this corner

WITNESS TO THE CORNER LOCATION: SHANE AUSTIN & JERRY SPEILMAN

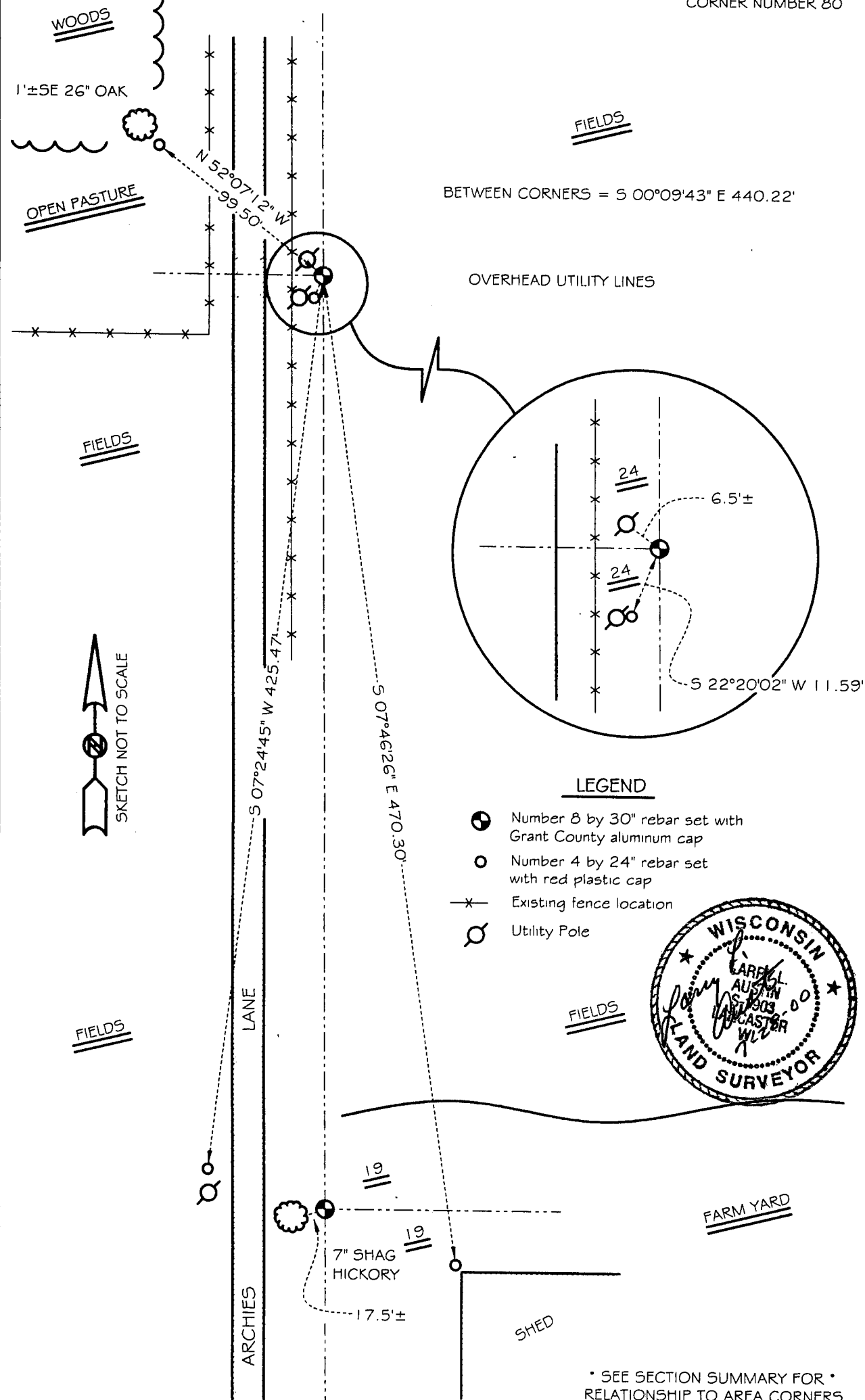
SKETCH:

SEE ATTACHED SHEET

GRANT COUNTY CERTIFIED LAND CORNER

SHEET 2 OF 2

CORNER NUMBER 80



LEGEND

- Number 8 by 30" rebar set with Grant County aluminum cap
- Number 4 by 24" rebar set with red plastic cap
- Existing fence location
- Utility Pole



* SEE SECTION SUMMARY FOR *
RELATIONSHIP TO AREA CORNERS