

# GRANT COUNTY U.S. PUBLIC LAND SURVEY MONUMENT RECORD

(A) IDENTIFY THE CORNER AS REFERENCED TO THE U.S. PUBLIC LAND SURVEY SYSTEM

● = CORNER MONUMENT RESTORED

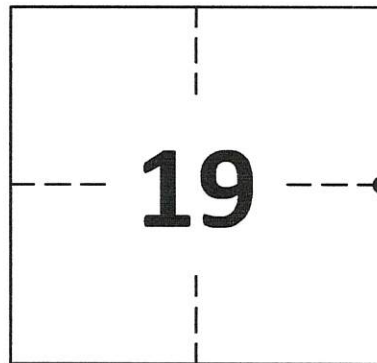
WITNESSES TO CORNER LOCATION:

BRIAN FOLZ  
COLE ENGELHARDT

GEOGRAPHIC COORDINATES  
NAD 83 (2011) ADJUSTMENT

LATITUDE: 42°43'14.3901"  
LONGITUDE: -90°59'50.5388"

WISCONSIN STATE PLANE SOUTH ZONE:  
NORTHING: 264,265.599  
EASTING: 1,700,480.958

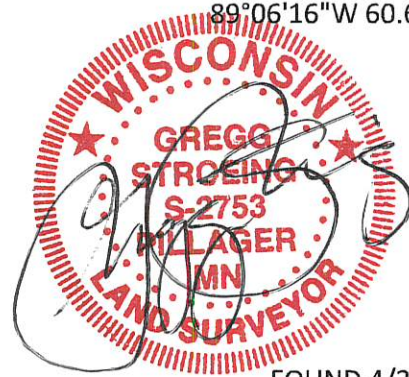
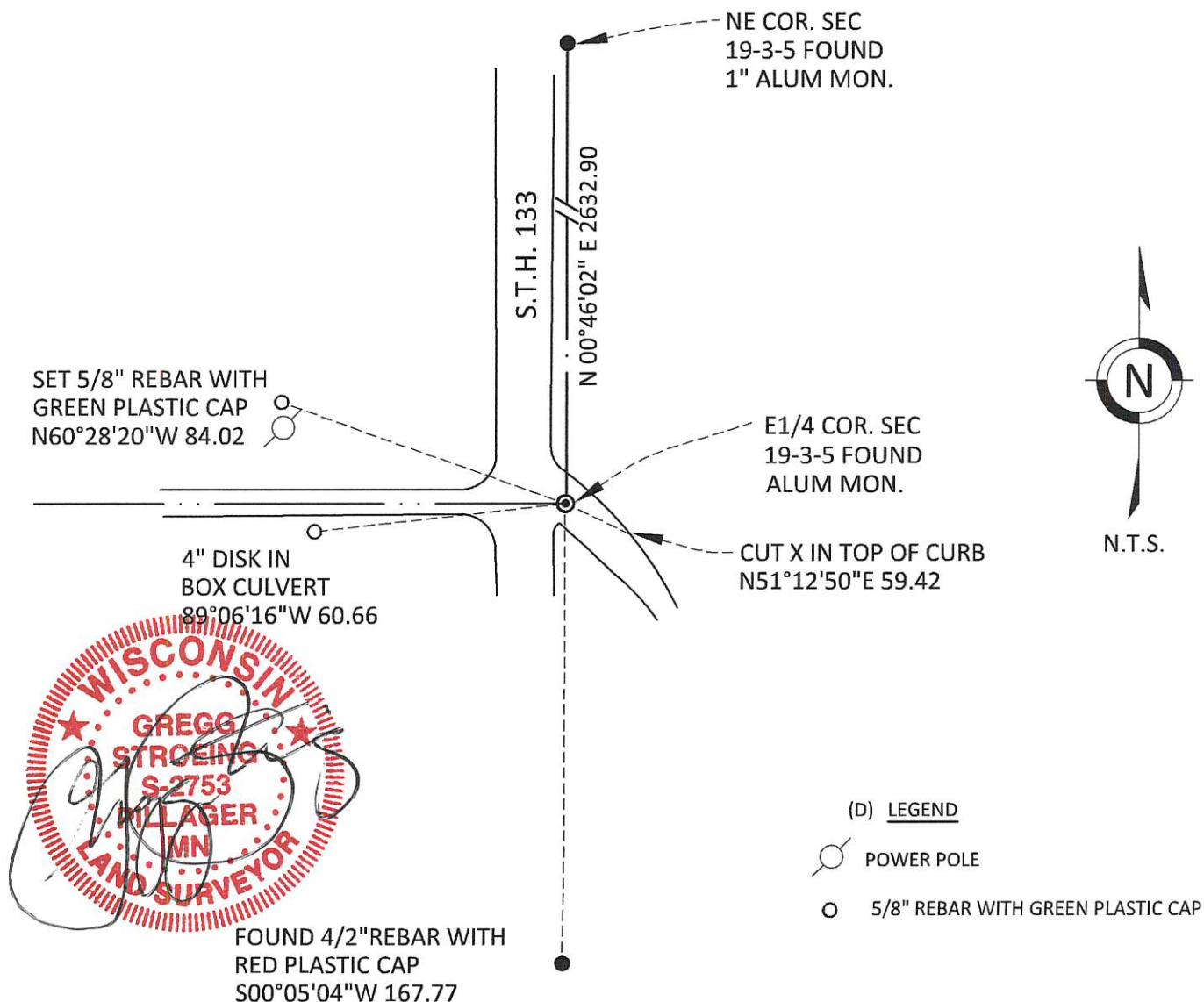


SECTION 19  
TOWNSHIP 3 NORTH, RANGE 5 WEST  
TOWN OF CASSEVILLE

(B) DESCRIBE ANY RECORD EVIDENCE, MONUMENT EVIDENCE, OCCUPATIONAL EVIDENCE, TESTIMONIAL EVIDENCE OR ANY OTHER MATERIAL EVIDENCE YOU CONSIDERED, AND WHETHER THE MONUMENT WAS FOUND OR PLACED.

FOUND REBAR AT SURFACE GRADE SET BY LARRY L. AUSTIN FEBRUARY 8, 2001.

(C) IN THE PLAN VIEW DRAWING BELOW, PROVIDE REFERENCE TIES TO AT LEAST 4 WITNESS MONUMENTS. WITNESS MONUMENTS SHALL BE MADE OF CONCRETE, NATURAL STONE, IRON, BEARING TREES OR ANY OTHER EQUALLY DURABLE MATERIAL. DEPICT THE RELEVANT MONUMENTS AND REFERENCE TIES WITH SUFFICIENT DETAIL TO ENABLE ACCURATE RELOCATION OF THE CORNER IF THE CORNER MONUMENT IS DISTURBED.



- (D) LEGEND
- POWER POLE
  - 5/8" REBAR WITH GREEN PLASTIC CAP

**GRANT COUNTY  
U.S. PUBLIC LAND SURVEY MONUMENT RECORD**

(E) DESCRIBE ANY MATERIAL DISCREPANCY BETWEEN THE LOCATION OF THE CORNER AS RESTORED OR REESTABLISHED AND THE LOCATION OF THAT CORNER AS PREVIOUSLY RESTORED OR REESTABLISHED BY DISTANCE AND DIRECTION. SHOW THE DISCREPANCY ON THE PLAN VIEW DRAWING UNDER (D), ABOVE. SHOW THE DISTANCES BETWEEN THE CORNER AS PREVIOUSLY RESTORED OR REESTABLISHED AND (1) THE CORNER AS RESTORED OR REESTABLISHED, AND (2) TO AT LEAST 2 OF THE WITNESS MONUMENTS SHOWN ON THE DRAWING IN (D) ABOVE.  
N/A

(F) WAS THE CORNER RESTORED THROUGH ACCEPTANCE OF (1) AN OBLITERATED EVIDENCE LOCATION, OR (2) A FOUND PERPETUATED LOCATION?

FOUND AT PERPETUATED LOCATION

(G&H) WAS THE CORNER REESTABLISHED THROUGH LOST CORNER PROPORTIONATE METHODS? IF SO, SHOW THE METHOD, INCLUDING THE DIRECTIONS AND DISTANCES TO OTHER PUBLIC LAND SURVEY CORNERS USED AS EVIDENCE OR USED FOR PROPORTIONING IN DETERMINING THE CORNER LOCATION.  
N/A

1. CORNER HISTORY: IN 1833 LUCIAS LYON SET ORIGINAL CORNER
2. CORNER WAS TIED TO BY SAMPSON IN RELATION TO ENGLERS ADDITION
3. IN 1950 HOMER D. RALPH TIED THE CORNER TO KLEINPELL'S ADDITION
4. IN 2001, BOOK 8, PAGE 171, LARRY L. AUSTIN SET A 1" X 30" REBAR WITH ALUMINUM CAP ON A PLAT SURVEY DONE FOR HARLAN REED
5. IN 2001 LARRY AUSTIN FILED A GRANT COUNTY CERTIFIED LAND CORNER
6. IN 2005, BOOK 18, PAGE 64, LARRY AUSTIN USED THIS CORNER ON A PLAT OF SURVEY FOR BOB HUDSON
7. IN 2014, BOOK 36, PAGE 40, AARON J. AUSTIN USED THIS CORNER ON A PLOT OF SURVEY FOR RUSS STRATON.
8. IN 2020 GREGG STROEING ACCEPTED THE POSITION OF THE FOUND 1 INCH ALUMINUM CAP SET BY AUSTIN AND SET NEW REFERENCE TIES AS SHOWN IN SECTION C HEREON.

(I) I, GREGG STROEING P.L.S. - 2753, CERTIFY THAT THE CORNER LOCATION SHOWN ON THIS RECORD WAS DETERMINED BY ME OR UNDER MY DIRECTION AND CONTROL AND THAT THIS U.S. PUBLIC LAND SURVEY MONUMENT RECORD IS CORRECT AND COMPLETE TO THE BEST OF MY KNOWLEDGE AND BELIEF.

SIGNATURE

11/30/2020

DATE



CORNER NO. 75

GRANT COUNTY  
CERTIFIED LAND CORNER

CORNER NUMBER 75

CERTIFICATE:

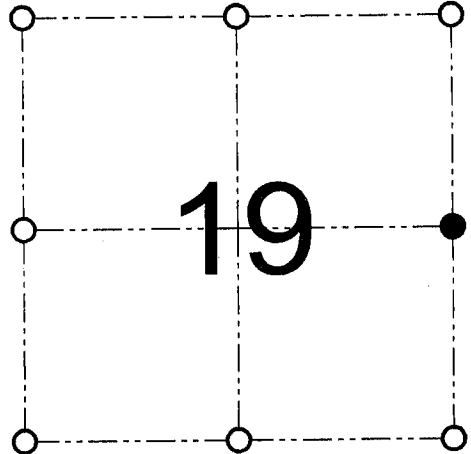
I, Larry L. Austin, do hereby certify that on the 12th day of January, 2001, I found evidence of the East 1/4 corner of Section 19, Town 3 North, Range 5 West, of the 4th Principal Meridian, and I re-established said corner according to the Wisconsin statutes as shown and described hereon.

Dated this 8th day of February, 2001

*Larry L. Austin*  
Larry L. Austin S-1903



SEAL



● = CORNER LOCATION

EAST 1/4 CORNER OF  
SECTION 19, T 3 N R 5 W  
TOWN OF CASSVILLE

HISTORY OF ORIGINAL CORNER ESTABLISHMENT:

Corner was originally set in 1833 by Lucius Lyon. Corner was tied to by Sampson in relation with Engler's Addition. In 1950 Homer Ralph tied to the corner in conjunction with Kleinpell's Addition.

DESCRIPTION OF CORNER EVIDENCE FOUND:

I found monumented evidence of Lot 1, Block "H" of Engler's Addition and retraced the location of the corner from these monuments. This location fit well with area corners and descriptions. Verified this location using EDM & GPS methods.

DESCRIPTION OF CORNER AND WITNESS MONUMENTS, references and accessories used to perpetuate the original or re-established location of this corner

WITNESS TO THE CORNER LOCATION: SHANE AUSTIN & SHELBY BLINDERT & BOBBY SEDGWICK

SKETCH:

SEE ATTACHED SHEET

SHEET 1 OF 2

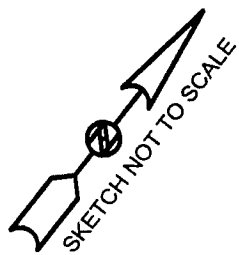
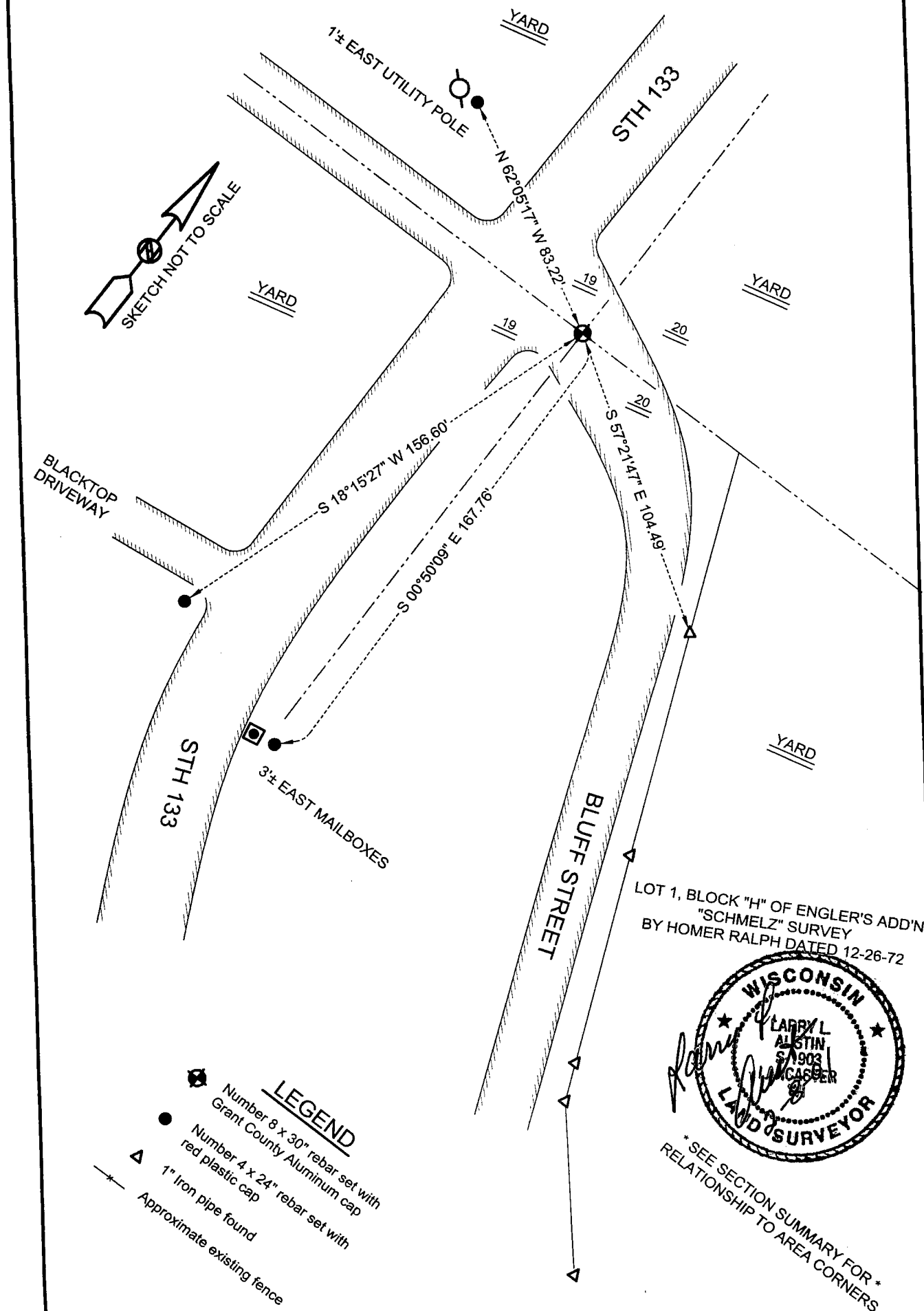
**AUSTIN ENGINEERING, LLC**  
4211 HWY 81 E, LANCASTER, WI 53813  
PHONE 608-723-6363 FAX 608-723-6702

FIELDBOOK: SDR33, 2008  
G:\CASSVILLE\WALZ  
C:\SC14\SWA\TIE\T3NR5W\75

DRAWN BY: SW AUSTIN  
APPROVED: LL AUSTIN  
CREW: BS - SB - SA - TF

# GRANT COUNTY CERTIFIED LAND CORNER

CORNER NUMBER 75



BLACKTOP DRIVEWAY

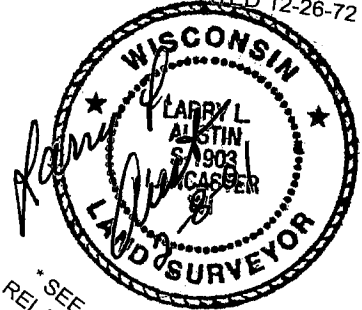
STH 133

STH 133

BLUFF STREET

3± EAST MAILBOXES

LOT 1, BLOCK "H" OF ENGLER'S ADD'N  
"SCHMELZ" SURVEY  
BY HOMER RALPH DATED 12-26-72



\* SEE SECTION SUMMARY FOR \*  
RELATIONSHIP TO AREA CORNERS

- LEGEND**
- Number 8 x 30" rebar set with Grant County Aluminum cap
  - Number 4 x 24" rebar set with red plastic cap
  - 1" Iron pipe found
  - Approximate existing fence

SHEET 2 OF 2

**AUSTIN ENGINEERING, LLC**  
4211 HWY 81 E, LANCASTER, WI 53813  
PHONE 608-723-6363 FAX 608-723-6702

FIELDBOOK: SDR33, 2008  
G:\CASSVILLE\WALZ  
C:\SC14\SWA\TIE\T3NR5W\75

DRAWN BY: SW AUSTIN  
APPROVED: LL AUSTIN  
CREW: BS - SB - SA - TF