

U.S. PUBLIC LAND SURVEY MONUMENT RECORD

This record shall show the location of the corner and shall include all of the following nine elements (a-i).

(a) CORNER LOCATION CORNER NO. 72

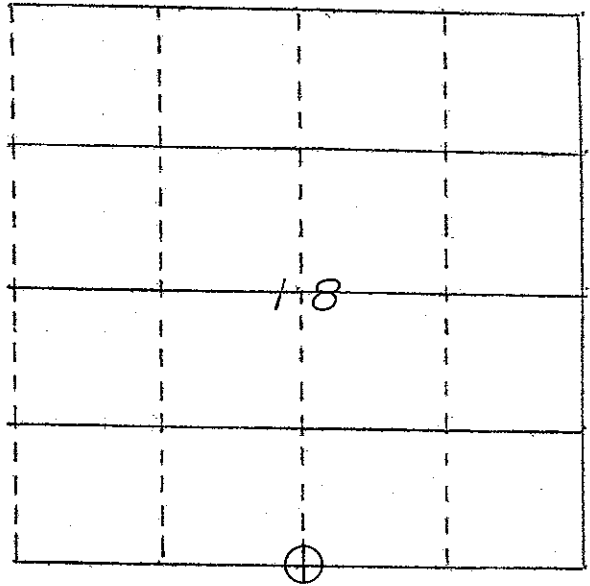
MARK CORNER LOCATION

SECTION NUMBER: 18

TOWNSHIP 3 NORTH, RANGE 5 ~~EAST~~ WEST

South 1/4 corner
Section 18, T3N, R5 West
Town of Cassville

Set 3/4"x24" rebar



(b) Describe any record evidence, monument evidence, occupational evidence, testimonial evidence or any other material evidence you considered, and whether the monument was found or placed.

There haven't been any surveys which noted this corner. Recent work completed by Alliant Energy show a straight line on the North side of Section 19.

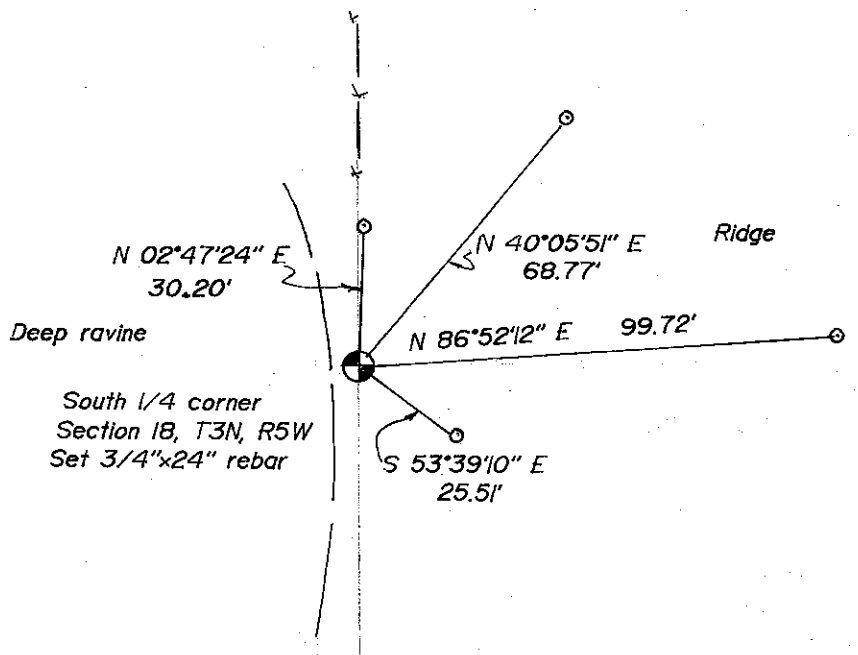
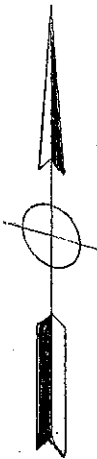
I set a 3/4"x24" rebar on a straight line between the Southeast and Southwest corners of Section 18 and in line with fence remnants north.

(c) CORNER LOCATION SKETCH: In the sketch, provide reference ties to at least 4 witness monuments of lasting durable material.

(d) The sketch shall include physical features surrounding the monument location sufficient to easily find the monument when in the general area, such as but not limited to utility poles, signs, trees, edges of forests or cropland, field lanes, water bodies, pavement, buildings, etc. Sketch shall also indicate north and scale, and include descriptions of symbols, in sketch or by legend.

LEGEND

- Set 5/8"x18" rebar
- x— Existing fence
- △ Found 3/4" rebar



SCALE 1" = 40'

- (e) Describe any material discrepancy between the location of the corner as restored or reestablished and the location of that corner as previously restored or reestablished by distance and direction. Show the discrepancy on the plan view drawing under (d), page 1. Show the distances between the corner as previously restored or reestablished and (1) the corner as restored or reestablished, and (2) to at least 2 of the witness monuments shown on the drawing in (d), page 1.

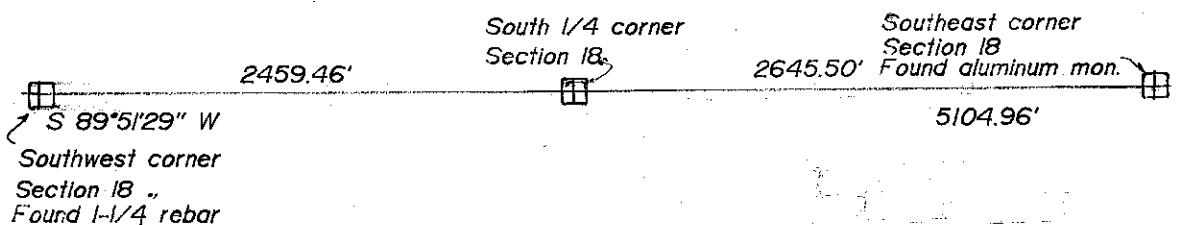
None.

- (f) Was the corner restored through acceptance of (1) an obliterated evidence location, or, (2) a found perpetuated location?

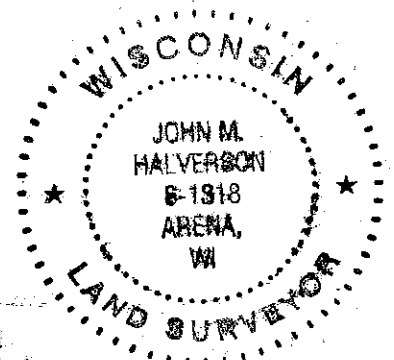
(1) an obliterated evidence location.

- (g&h) Was the corner reestablished through lost corner proportionate methods? If so, show the method, including the directions and distances to other public land survey corners used as evidence or used for proportioning in determining the corner location.

Yes.



Affix Land Surveyor Seal



- (i) I, John M. Halverson
 (type or print name) certify that this corner location shown on this record was determined by me or under my direction and control and that this U.S. Public Land Survey Monument Record is correct and complete to the best of my knowledge and belief.

John M. Halverson
 Signature

10/6/2021
 Date