

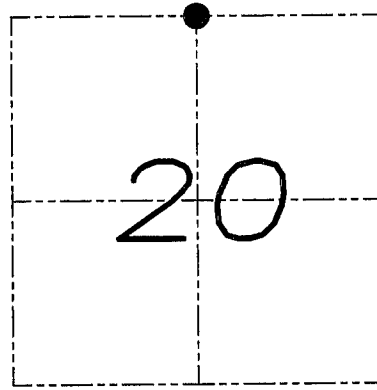
# U.S. PUBLIC LAND SURVEY MONUMENT RECORD

Section 20, Town 3 North Range 5 West, Town of Cassville, Grant County, Wisconsin

## CERTIFICATE

I, Larry L. Austin, do hereby certify that the corner location on this record was determined by me and/or under my direct supervision and that this U.S. public land survey monument record is correct and complete to the best of my knowledge and belief.

*Larry L. Austin*  
 Larry L. Austin, S-19993  
 LANCASTER WI  
 LAND SURVEYOR  
 2.10.06 date



● = CORNER LOCATION

## HISTORY OF CORNER

Corner was originally set in 1833 by Lyon. Many various surveyors have measured to a No. 6 rebar at this location. No recent record of the corner was found.

## CORNER EVIDENCE FOUND

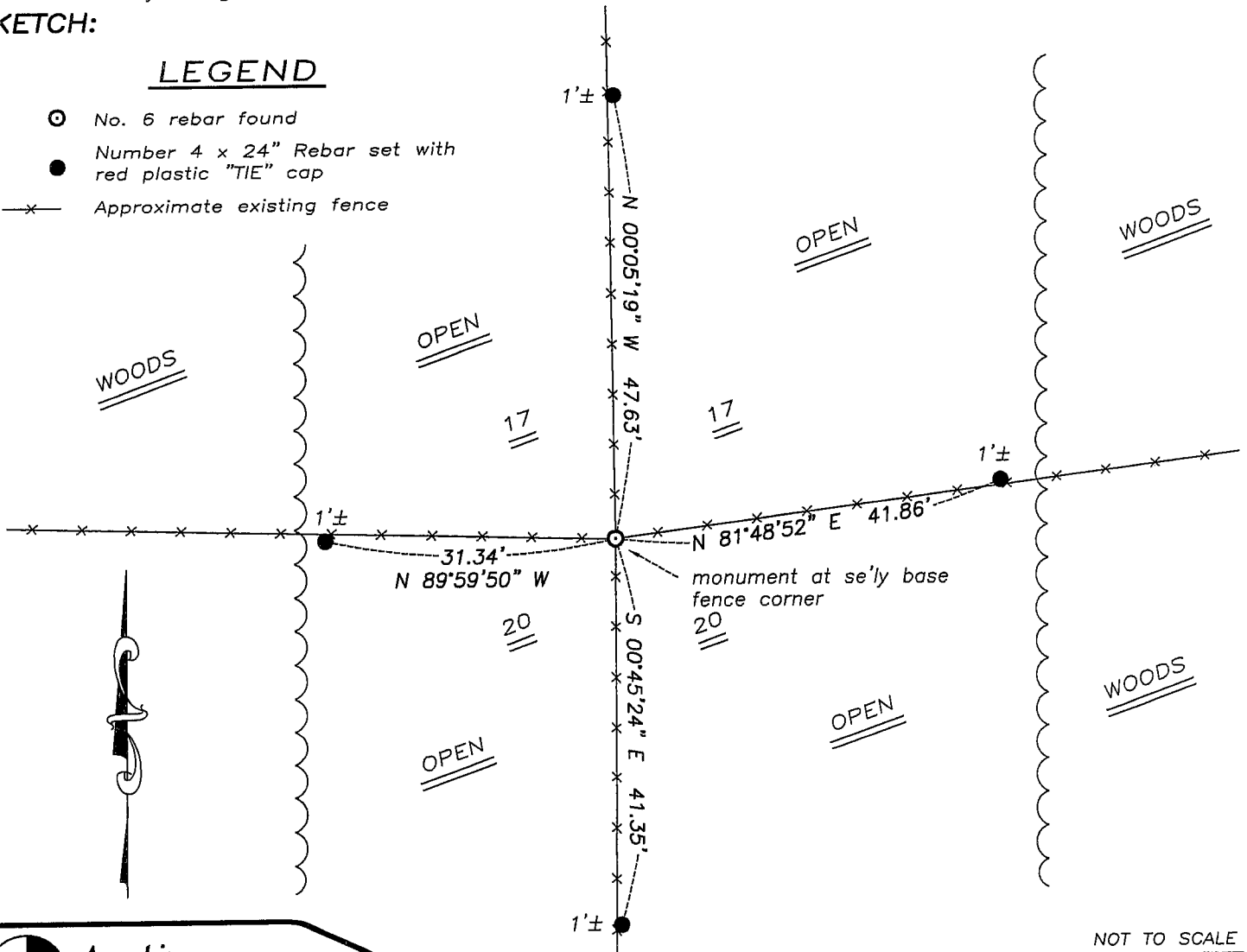
I found and accepted the existing No. 6 rebar after an EDM & GPS traverse of the area.

DESCRIPTION OF CORNER AND WITNESS MONUMENTS, references and accessories used to perpetuate the original or re-established location of this corner. Witnesses to monument location Bobby Sedgwick & Brad Digman & Shane Austin

## SKETCH:

### LEGEND

- ⊙ No. 6 rebar found
- Number 4 x 24" Rebar set with red plastic "TIE" cap
- x— Approximate existing fence



NOT TO SCALE



**Austin**  
**Engineering LLC**

4211 HWY 81 E, LANCASTER, WI 53813  
 PHONE 608-723-6363 FAX 608-723-6702

JOB NUMBER 05S310-SLC  
 FIELDBOOK: TDSR, 2508  
 G:\T3NR4W\133  
 H:\TIE\T3NR5W\70

DRAWN BY: SW AUSTIN  
 APPROVED: LL AUSTIN

70