

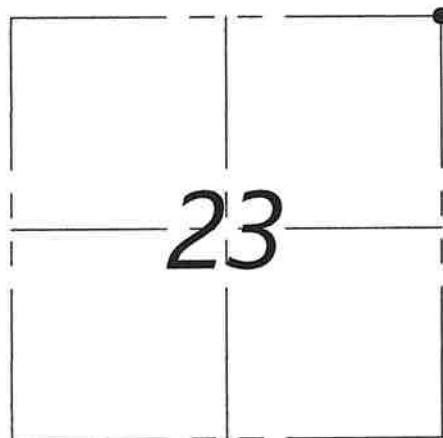
U.S. PUBLIC LAND SURVEY MONUMENT RECORD

Section 23, Township 3 North, Range 5 West, Grant County, Wisconsin

Certification:

I, Trevor A. McMann, Wisconsin Professional Land Surveyor, certify that the corner location shown on the record was determined by me or under my direction and control and that the U.S. Public Land Survey Monument Record is correct and complete to the best of my knowledge and belief, in accordance with Chapter A-E 7.08 of the Wisconsin Administration Code.

 9/12/2025
 Trevor A. McMann, S-2908-8 Date



● = CORNER LOCATION

HISTORY OF CORNER ESTABLISHMENT:

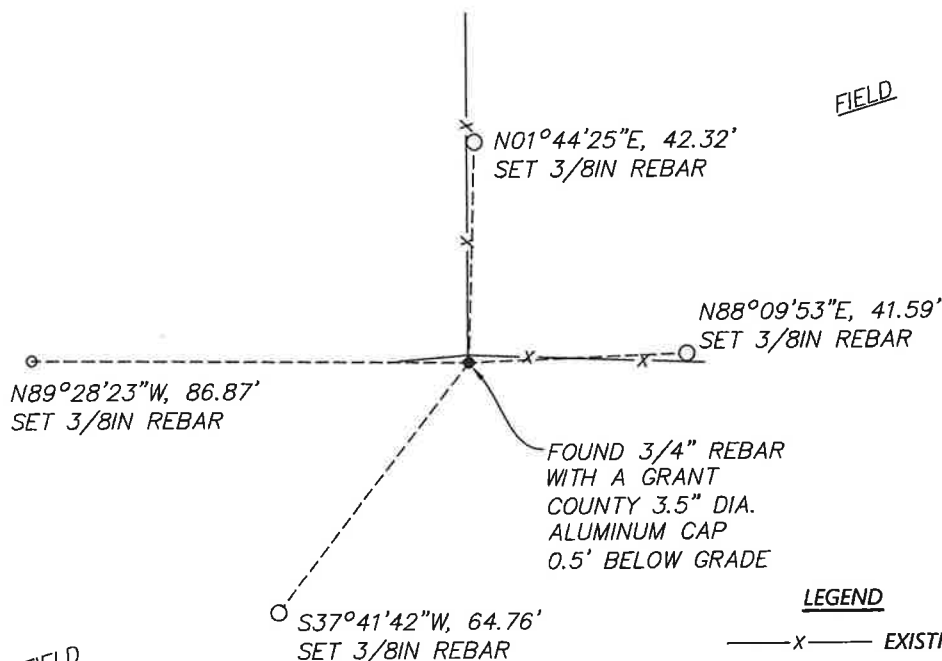
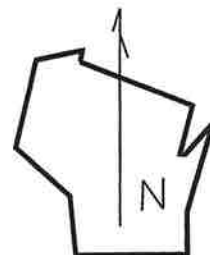
- 1833- Lucius Lyon set the original corner.
- 1999- Bruce D. Bowdenm, LS 1250, set a No. 6x24" rebar with Grant County Aluminum cap at occupation. Position agrees with proportionate measurements. 4 ties were established.
- 2002- Larry L. Austin, LS 1903, found a No. 6 rebar with Grant County aluminum cap while surveying in section 14.
- 2011- Aaron J. Austin, LS 2922, found a No. 8 rebar with a Grant County aluminum cap while surveying in section 14.
- 2022- Westwood searched and found a 3/4" rebar with a Grant County 3.5" dia. aluminum cap 0.5' below grade. Established 4 new reference ties.

DESCRIPTION OF CORNER EVIDENCE FOUND:

Westwood searched and found a 3/4" rebar with a Grant County 3.5" dia. aluminum cap 0.5' below grade. Established 4 new reference ties. Accepted as Corner.

Location Diagram, showing corner identification name, bearing and distance references to at least four witness monuments, fence or occupational lines, centerlines of roads, and other site details for reference. Also, show the bearings and distances between the witness monuments.

Northeast Corner of Section 23, Township 3 North, Range 5 West, Grant County, Wisconsin



LEGEND

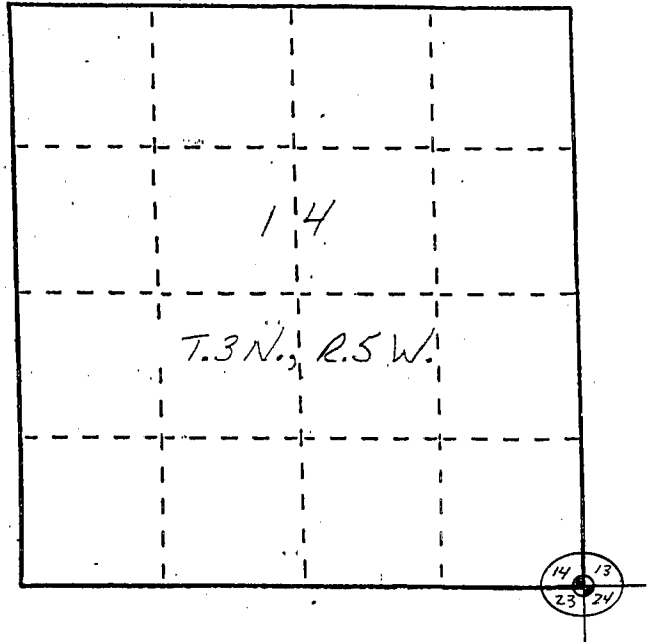
- x— EXISTING FENCELINE
- FOUND 3/4" REBAR WITH A GRANT COUNTY 3.5" DIA. ALUMINUM CAP
- SET WITNESS MONUMENT (AS NOTED)

U. S. PUBLIC LAND SURVEY MONUMENT RECORD

INSTRUCTIONS: This record shall show the location of the corner and shall include all of the following nine elements (a through i).

- (a) Identify the corner by reference to the U.S. public land survey system.
- = Corner monument restored.

The Southeast Corner of
Section 14, Town 3 North,
Range 5 West, Crossville
Township, Grant County,
Wisconsin.

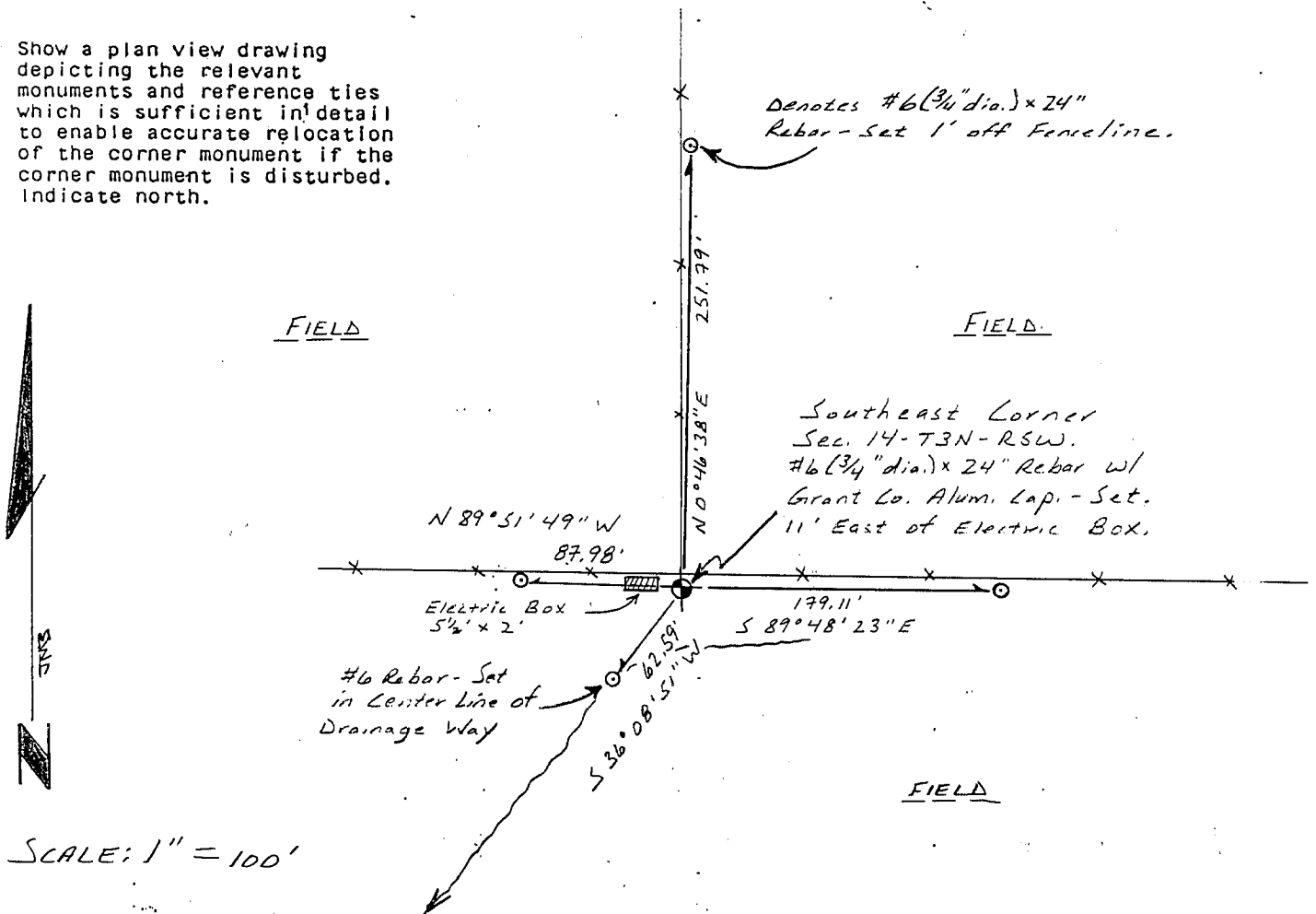


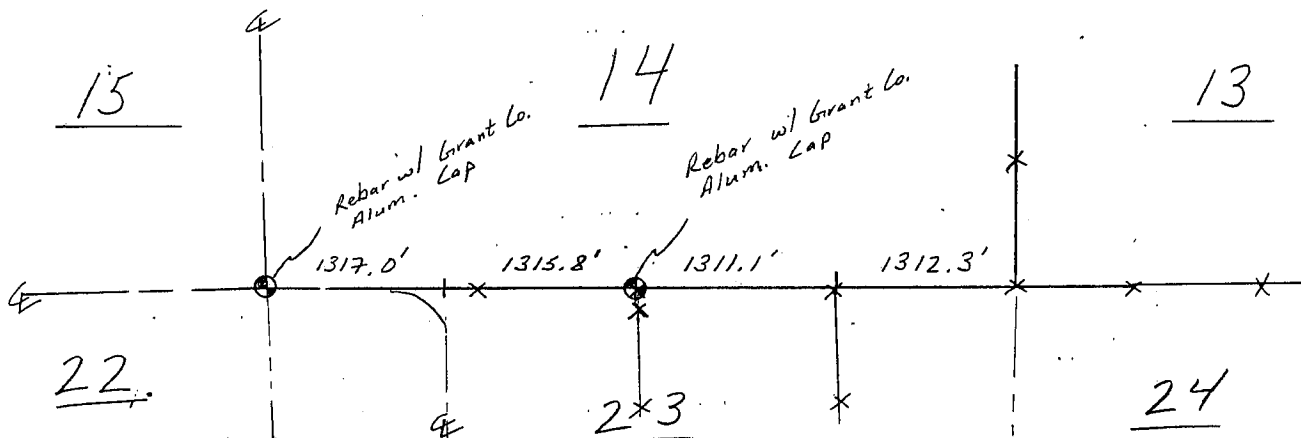
- (b) Describe any record evidence, monument evidence, occupational evidence, testimonial evidence or any other material evidence you considered, and whether the monument was found or placed.

Monument was set from occupational evidence of roads and fences after verification by proportionate measurements from a GPS and EDM survey of the area.

- (c) In the plan view drawing below, provide reference ties to at least 4 witness monuments, or, if the location is within a municipality, to at least 2 witness monuments. (Witness monuments shall be made of concrete, natural stone, iron or other equally durable material, ~~except~~ wood.) Describe witness monuments.

- (d) Show a plan view drawing depicting the relevant monuments and reference ties which is sufficient in detail to enable accurate relocation of the corner monument if the corner monument is disturbed. Indicate north.





(e) Describe any material discrepancy between the location of the corner as restored or reestablished and the location of that corner as previously restored or reestablished by distance and direction. Show the discrepancy on the plan view drawing under (d), above. Show the distances between the corner as previously restored or reestablished and (1) the corner as restored or reestablished, and (2) to at least 2 of the witness monuments shown on the drawing in (d), above.

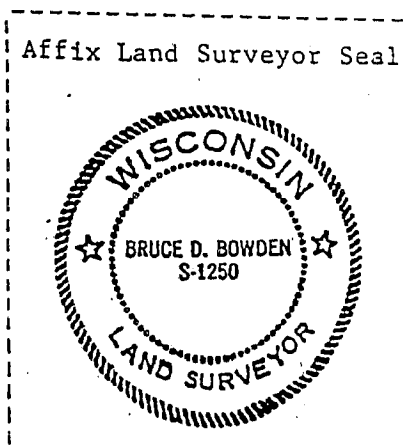
None.

(f) Was the corner restored through acceptance of (1) an obliterated evidence location, or, (2) a found perpetuated location?

obliterated evidence location.

(g&h) Was the corner reestablished through lost corner proportionate methods? If so, show the method, including the directions and distances to other public land survey corners used as evidence or used for proportioning in determining the corner location?

No.



(i) BRUCE D. BOWDEN

(type or print name) certify that the corner location shown on this record was determined by me or under my direction and control and that this U.S. Public Land Survey Monument Record is correct and complete to the best of my knowledge and belief.

Bruce D. Bowden
Signature

July 9, 1999
Date