

# U.S. PUBLIC LAND SURVEY MONUMENT RECORD - GRANT COUNTY, WI

Section 13, Town 3 North Range 5 West, Town of Cassville (a)

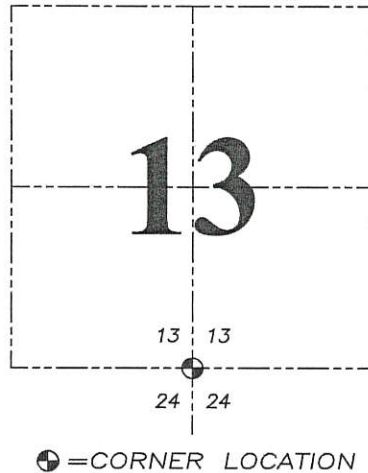
NOTE: This form is intended and designed to fulfill all requirements of the Wisconsin Administrative Code Chapter A-E 7.08, U.S. Public Land Survey Monument Record (3) (a) (b) (c) (d) (e) (f) (g) (h) (i).

**CERTIFICATE:** (i)

I, Aaron J. Austin, Wisconsin Professional Land Surveyor, do hereby certify that the corner location on this record was determined by me and/or under my direct supervision and that this U.S. Public Land Survey Monument Record is correct and complete to the best of my knowledge and belief.

Dated this 5th day of October, 2020

*Aaron J. Austin*  
Aaron J. Austin, S-2922



Grant County Coordinates:  
NAD 83 (2011)  
Northing: 479,827.57  
Easting: 765,725.67

**HISTORY OF CORNER ESTABLISHMENT:**

Original corner was set in 1833 by Robert Clark.  
Corner was tied to on a Survey by Joel Barber dated 6/28/1867 filed in Book C, Page 218.  
Larry Austin set a Grant County Aluminum Monument and prepared a Survey Monument Record dated 6/20/1988.

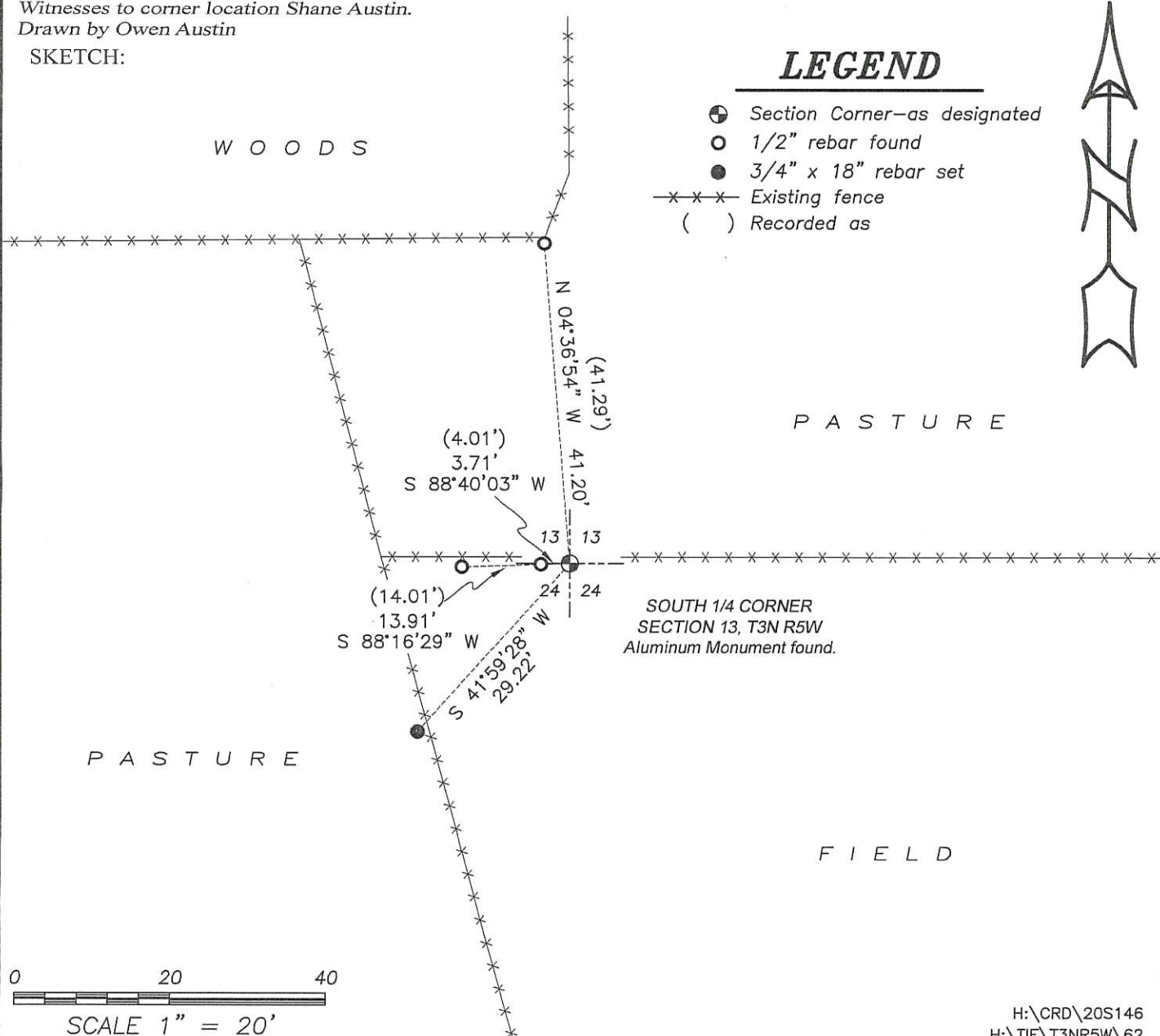
**DESCRIPTION OF CORNER EVIDENCE FOUND:** (b) (f) (g) (h)

I found the Aluminum Monument and three witness corners Larry set. I set one additional witness corner after I verified the Monument's location with G.P.S. and E.D.M. methods.

**DESCRIPTION OF CORNER AND WITNESS MONUMENTS,** references and accessories used to perpetuate the original or re-established location of this corner. (c) (d) (e)

Witnesses to corner location Shane Austin.  
Drawn by Owen Austin

SKETCH:



SOUTH 1/4 CORNER  
SECTION 13, T3N R5W  
Aluminum Monument found.



(f) Was the corner restored through acceptance of (1) an obliterated evidence location, or, (2) a found perpetuated location?

(2) FOUND PERPETUATED LOCATION

(g&h) Was the corner reestablished through lost corner proportionate methods? If so, show the method, including the directions and distances to other public land survey corners used as evidence or used for proportioning in determining the corner location?

NO.

(i) I, LARRY L. AUSTIN  
(type or print name) certify that the corner location shown on this record was determined by me or under my direction and control and that this U.S. Public Land Survey Monument Record is correct and complete to the best of my knowledge and belief.

Larry L. Austin  
Signature

6/20/88  
Date

