

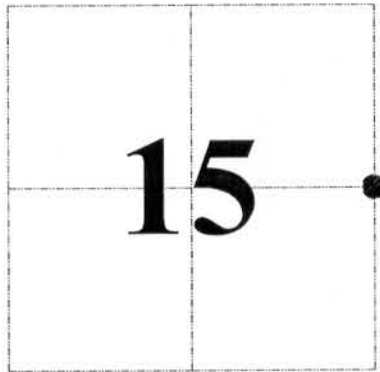
U.S. PUBLIC LAND SURVEY MONUMENT RECORD - GRANT COUNTY, WI

Section 15, Town 3 North Range 5 West, Town of Cassville East

CERTIFICATE:

I, Chris D. Higgins, do hereby certify that the corner location on this record was determined by me and/or under my direct supervision and that this U.S. Public Land Survey Monument Record is correct and complete to the best of my knowledge and belief.

Dated this 1st day of November, 2012.



● = CORNER LOCATION

Chris D. Higgins
Chris D. Higgins, RLS-2937-8



HISTORY OF CORNER ESTABLISHMENT:

Land Survey Monument Record was found for this corner.

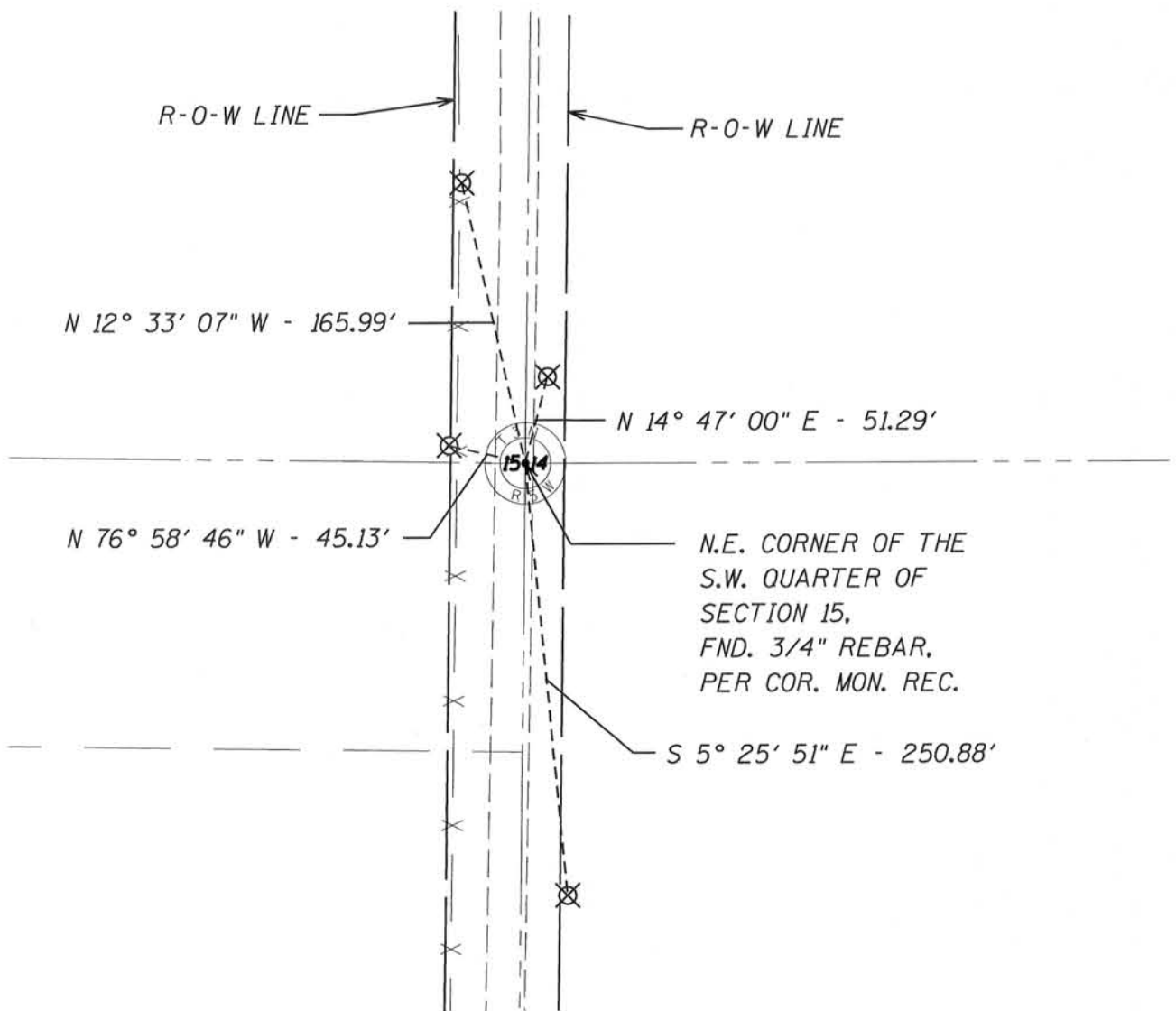
DESCRIPTION OF CORNER EVIDENCE FOUND:

Aluminum Monument found in place per Land Survey Monument Record by Bruce Bowden dated July 9, 1999. I agreed with location. Some ties were missing so set new tie points.

DESCRIPTION OF CORNER AND WITNESS MONUMENTS, references and accessories used to perpetuate the original or re-established location of this corner. Witnesses to corner location Ben Scheffner and Rey Munoz

SKETCH:

⊗ = 3/4" x 36" Rebar Set



NOV 27 2012

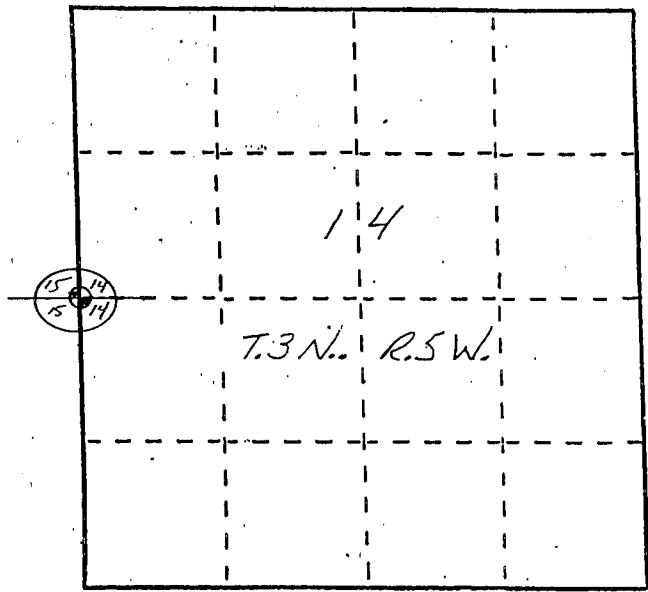
U. S. PUBLIC LAND SURVEY MONUMENT RECORD

INSTRUCTIONS: This record shall show the location of the corner and shall include all of the following nine elements (a through i).

- (a) Identify the corner by reference to the U.S. public land survey system.

○ = Corner monument restored.

The West Quarter Corner of
 Section 14, Town 3 North,
 Range 5 West, Cassville
 Township, Grant County,
 Wisconsin.



- (b) Describe any record evidence, monument evidence, occupational evidence, testimonial evidence or any other material evidence you considered, and whether the monument was found or placed.

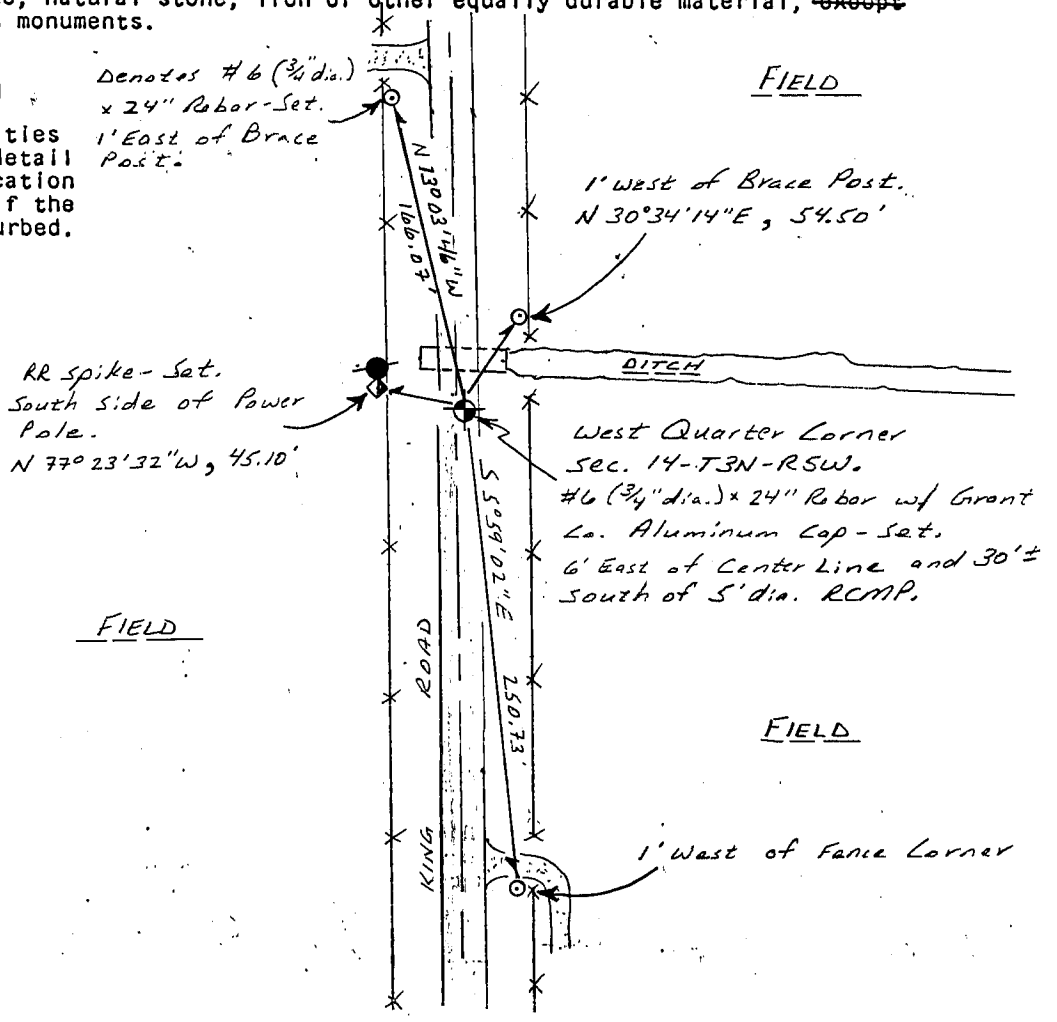
Monument placed on straight line using found monuments of record at the Northwest and Southwest corners of Section 14.

- (c) In the plan view drawing below, provide reference ties to at least 4 witness monuments, or, if the location is within a municipality, to at least 2 witness monuments. (Witness monuments shall be made of concrete, natural stone, iron or other equally durable material, ~~except~~ wood.) Describe witness monuments.

- (d) Show a plan view drawing depicting the relevant monuments and reference ties which is sufficient in detail to enable accurate relocation of the corner monument if the corner monument is disturbed. Indicate north.



SCALE: 1" = 100'



e) Describe any material discrepancy between the location of the corner as restored or reestablished and the location of that corner as previously restored or reestablished by distance and direction. Show the discrepancy on the plan view drawing under (d), above. Show the distances between the corner as previously restored or reestablished and (1) the corner as restored or reestablished, and (2) to at least 2 of the witness monuments shown on the drawing in (d), above.

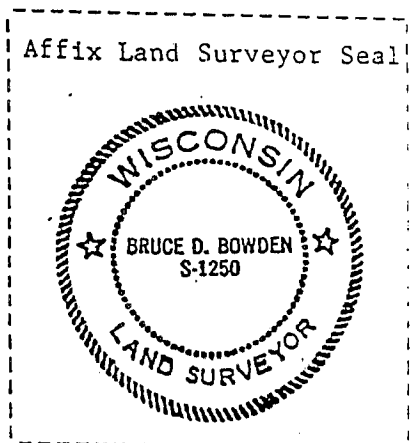
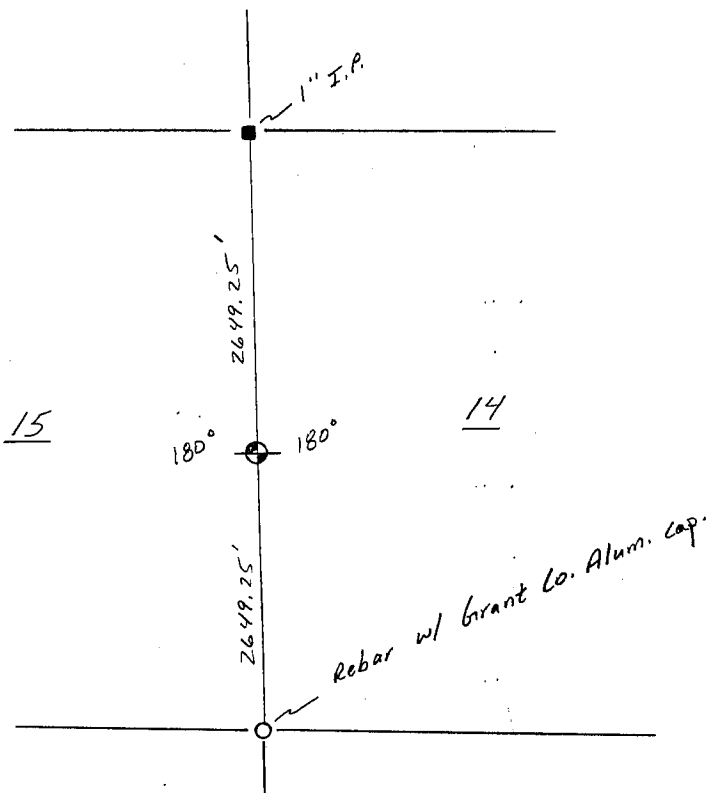
None.

f) Was the corner restored through acceptance of (1) an obliterated evidence location, or, (2) a found perpetuated location?

an obliterated evidence location.

g&h) Was the corner reestablished through lost corner proportionate methods? If so, show the method, including the directions and distances to other public land survey corners used as evidence or used for proportioning in determining the corner location?

Yes.



(1) BRUCE D. BOWDEN,

(type or print name) certify that the corner location shown on this record was determined by me or under my direction and control and that this U.S. Public Land Survey Monument Record is correct and complete to the best of my knowledge and belief.

Bruce D. Bowden
Signature

July 9, 1999
Date