

# GRANT COUNTY CERTIFIED LAND CORNER

CORNER NO. 56

**CERTIFICATE:**

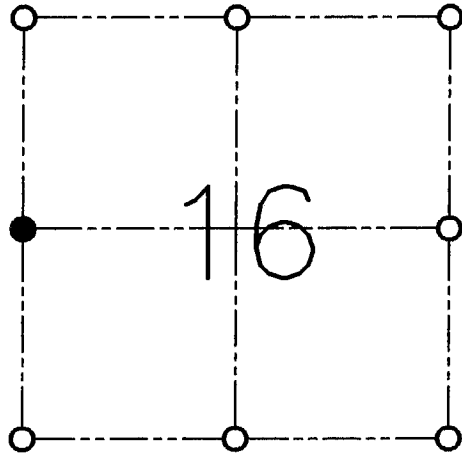
I, LARRY L. AUSTIN, DO HEREBY CERTIFY THAT ON SIXTEENTH DAY OF MARCH, 1999, I FOUND OCCUPATIONAL EVIDENCE OF THE WEST 1/4 OF SECTION 16, TOWN 3 NORTH, RANGE 5 WEST, OF THE FOURTH PRINCIPAL MERIDIAN, AND I RE-ESTABLISHED SAID CORNER ACCORDING TO THE WISCONSIN STATUTES AS SHOWN AND DESCRIBED HEREON.

DATED THIS FIRST DAY OF APRIL, 1999

*Larry L. Austin*  
LARRY L. AUSTIN S-1903



SEAL



● = CORNER LOCATION

**WEST 1/4 OF SECTION 16  
T 3 N R 5 W  
TOWN OF CASSVILLE**

**HISTORY OF ORIGINAL CORNER ESTABLISHMENT:**

CORNER WAS SET IN 1833 BY LUCIUS LYON.

**DESCRIPTION OF CORNER EVIDENCE FOUND:**

I FOUND AN OCCUPIED FENCE WEST-SOUTH. I ACCEPTED A PROJECTION OF THE FENCES AFTER AN E.D.M. TRAVERSE OF THE AREA.

**DESCRIPTION OF CORNER AND WITNESS MONUMENTS, REFERENCES AND ACCESSORIES USED TO PERPETUATE THE ORIGINAL OR RE-ESTABLISHED LOCATION OF THIS CORNER:**

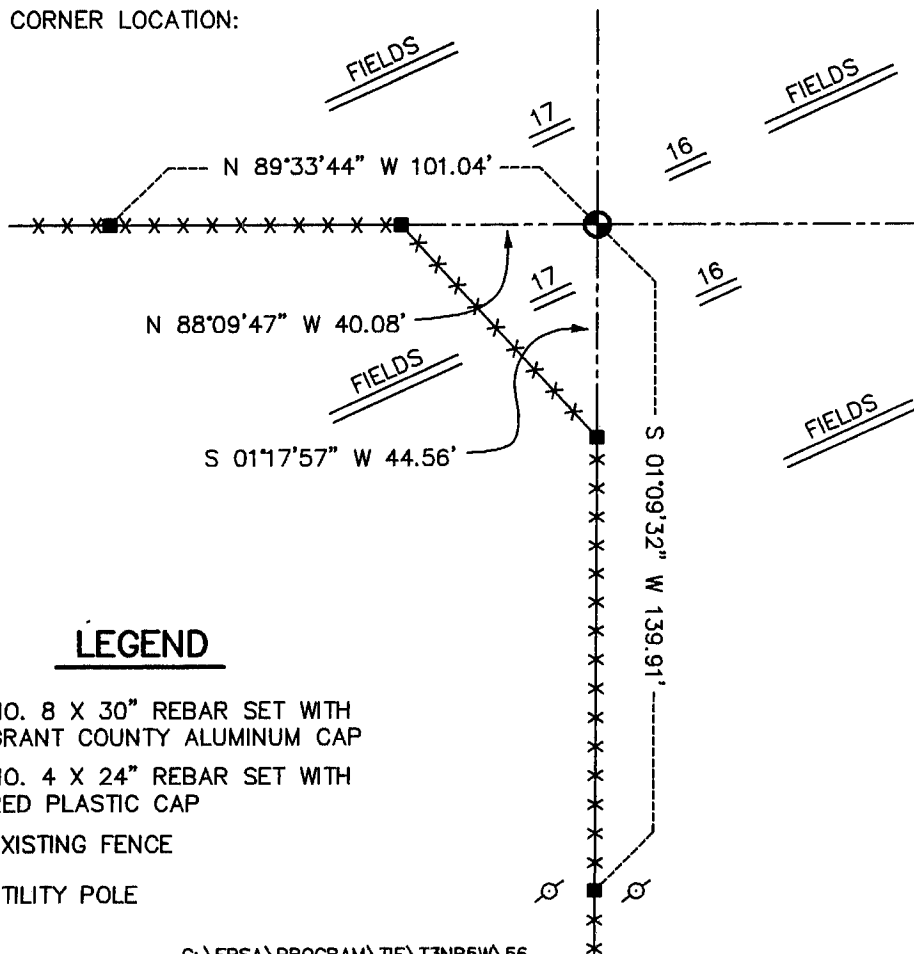
**WITNESS TO THE CORNER LOCATION:**

BOBBY SEDGWICK  
SHELBY BLINDERT

**SKETCH:**



SKETCH NOT TO SCALE



**LEGEND**

- NO. 8 X 30" REBAR SET WITH GRANT COUNTY ALUMINUM CAP
- NO. 4 X 24" REBAR SET WITH RED PLASTIC CAP
- ×× EXISTING FENCE
- ⊙ UTILITY POLE