

U.S. PUBLIC LAND SURVEY MONUMENT RECORD - GRANT COUNTY, WI

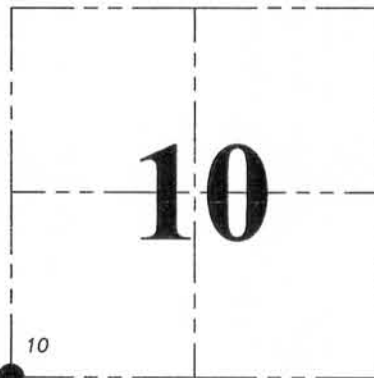
Section 10, Town 3 North Range 5 West, Town of Cassville

CERTIFICATE:

I, Aaron J. Austin, do hereby certify that the corner location on this record was determined by me and/or under my direct supervision and that this U.S. Public Land Survey Monument Record is correct and complete to the best of my knowledge and belief.

Dated this 23rd day of July, 2014.

Aaron J. Austin
 Aaron J. Austin, S-2922



● = CORNER LOCATION

HISTORY OF CORNER ESTABLISHMENT:

1833-Lucius Lyon set original corner.
 1997-Robert Talarczyk prepared a U.S. Public Land Survey Monument Record for this corner.

DESCRIPTION OF CORNER EVIDENCE FOUND:

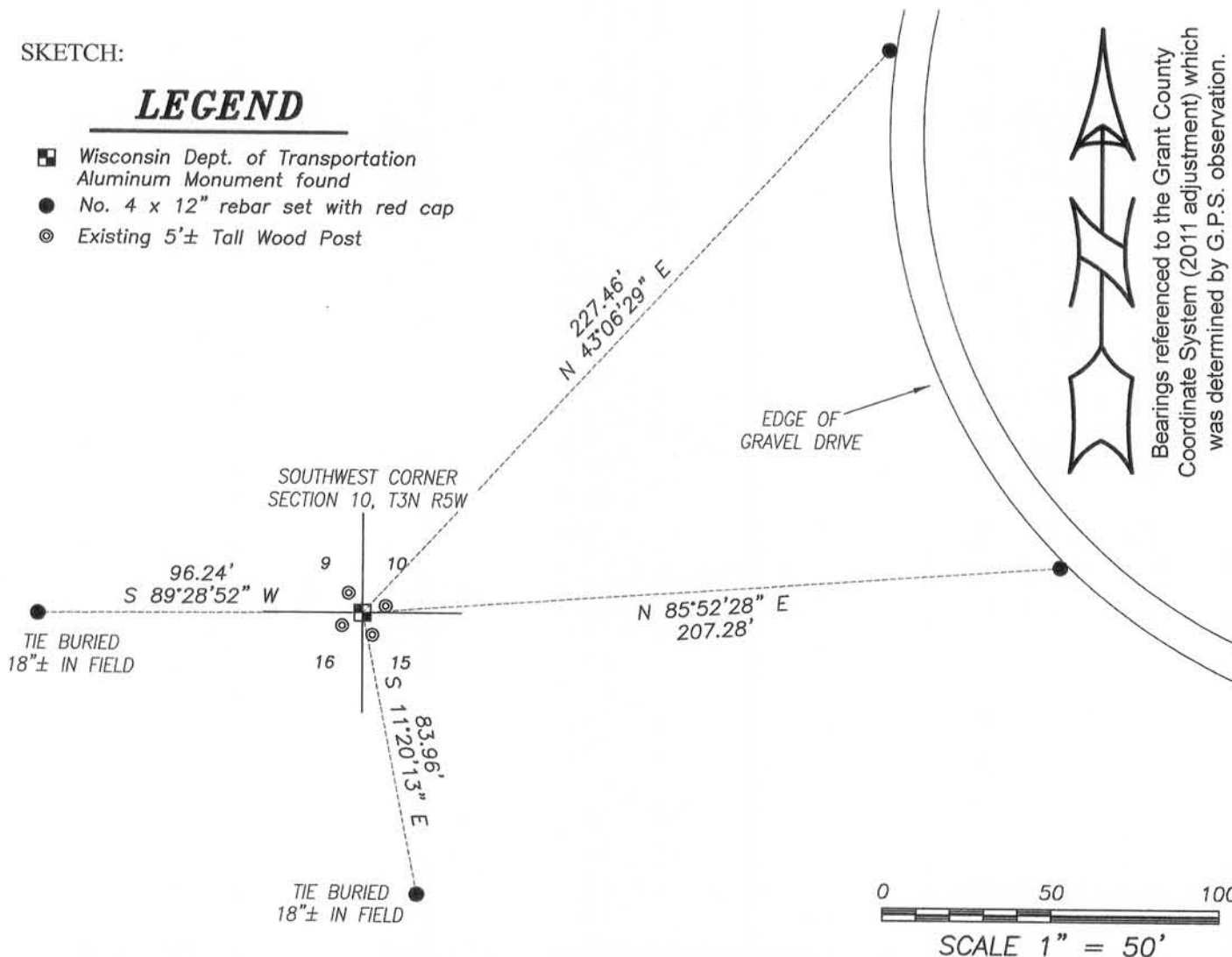
I found a Wisconsin Dept. of Transportation monument in place.
 No ties were recovered due to recent excavation work in the area.
 I reset 4 new ties and verified this location by E.D.M. and G.P.S. methods.

DESCRIPTION OF CORNER AND WITNESS MONUMENTS, references and accessories used to perpetuate the original or re-established location of this corner. Witnesses to corner location Shane Austin and Brandon Austin.

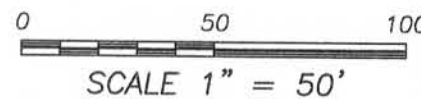
SKETCH:

LEGEND

- Wisconsin Dept. of Transportation Aluminum Monument found
- No. 4 x 12" rebar set with red cap
- ⊙ Existing 5'± Tall Wood Post



Bearings referenced to the Grant County Coordinate System (2011 adjustment) which was determined by G.P.S. observation.



Austin Engineering LLC
 austinengineeringllc.com
 4211 HWY 81 E, LANCASTER, WI 53813
 PHONE: 608-723-6363 FAX: 608-723-6702

JOB NO: 14s114
 G:\14s114
 H:\TIE\T3NR5W\47

FIELDBOOK: TDSR
 DRAWN BY: AJ AUSTIN
 CREW: SW AUSTIN

JUL 24 2014

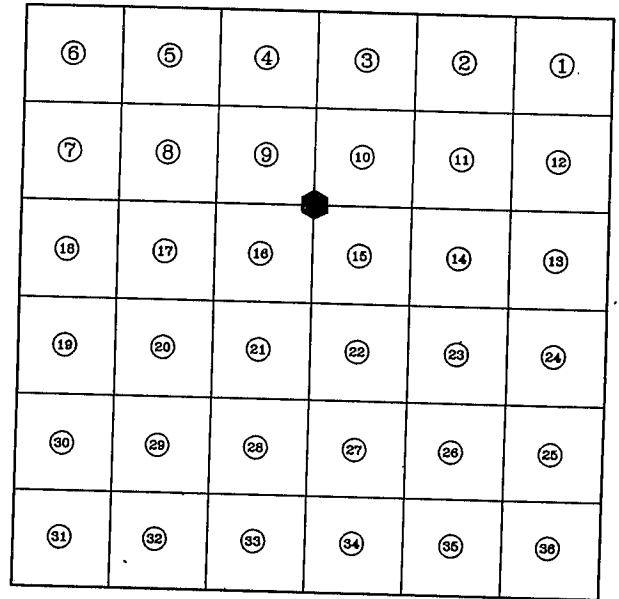
REC'D MAR 12 1997

U.S. PUBLIC LAND SURVEY MONUMENT RECORD

INSTRUCTIONS: This record shall show the location of the corner and shall include all of the following nine elements. (A through I)

(A) Identify the corner by reference to the U.S. Public Land Survey System.

The Southwest corner of Section 10, Town 3 North, Range 5 West, Grant County, Wisconsin.



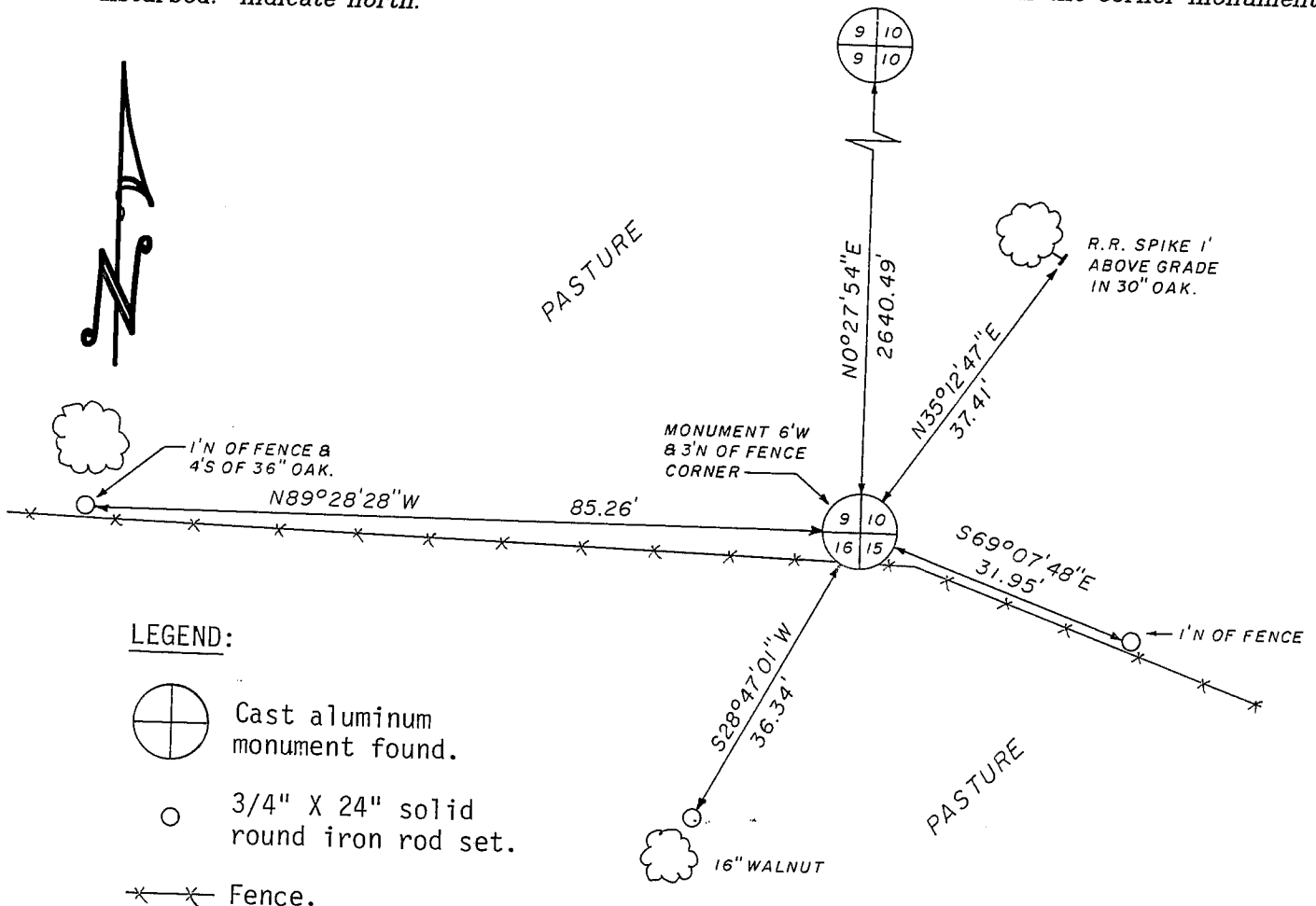
(B) Describe any record evidence, monument evidence, occupational evidence, testimonial evidence or any other material evidence you considered, and whether the monument was found or placed.

Found a Department of Transportation monument apparently set in preliminary work for a relocation of S.T.H. 81 that has yet to be performed. No tie sheet was filed by the state.

Verified that this corner was reestablished by Kurt Crooks in sub-contract work for said relocation.

(C) In the plan view drawing below, provide reference ties to at least 4 witness monuments, or, if the location is within a municipality, to at least 2 witness monuments. (Witness monuments shall be made of concrete, natural stone, iron or other equally durable material.) Describe witness monuments.

(D) Show a plan view drawing depicting the relevant monuments and the reference ties which is sufficient in detail to enable accurate relocation of the corner monument if the corner monument is disturbed. Indicate north.



LEGEND:

- Cast aluminum monument found.
- 3/4" X 24" solid round iron rod set.
- Fence.

SCALE: 1" = 20'

(E) Describe any material discrepancy between the location of the corner as restored or reestablished and the location of that corner as previously restored or reestablished by distance and direction. Show the discrepancy on the plan view drawing under (D), above. Show the distances between the corner as previously restored or reestablished and (1) the corner as restored or reestablished, and (2) to at least 2 of the witness monuments shown on the drawing in (D), above.

None

(F) Was the corner restored through acceptance of (1) an obliterated evidence location, or, (2) a found perpetuated location?

Found monument set by the D.O.T.

(G & H) Was the corner reestablished through lost corner proportionate methods? If so, show the method, including the directions and distances to other Public Land Survey corners used as evidence or used for proportioning in determining the corner location?

No

(I) I hereby certify that I have complied with the Wisconsin Statutes, Statutes of the United States, and the rules and regulations made by the Secretary of the Interior in the location of this corner.

Robert A. Talarczyk

02/12/97

Signature (Print or type name below)

Date

Robert A. Talarczyk



TALARCZYK & ASSOC., INC.

W5105 KUBLY ROAD
P.O. BOX 235
NEW GLARUS, WI 53574
PHONE 608/527-5216
FAX 608/527-5357

Affix Registered Land Surveyor Seal