

U.S. PUBLIC LAND SURVEY MONUMENT RECORD - GRANT COUNTY, WI

Section 12, Town 3 North Range 5 West, Town of Cassville

CERTIFICATE:

I, Aaron J. Austin, do hereby certify that the corner location on this record was determined by me and/or under my direct supervision and that this U.S. Public Land Survey Monument Record is correct and complete to the best of my knowledge and belief.

Dated this 6th day of April, 2013.

Aaron J. Austin
 Aaron J. Austin, S-2922



● = CORNER LOCATION

HISTORY OF CORNER ESTABLISHMENT:

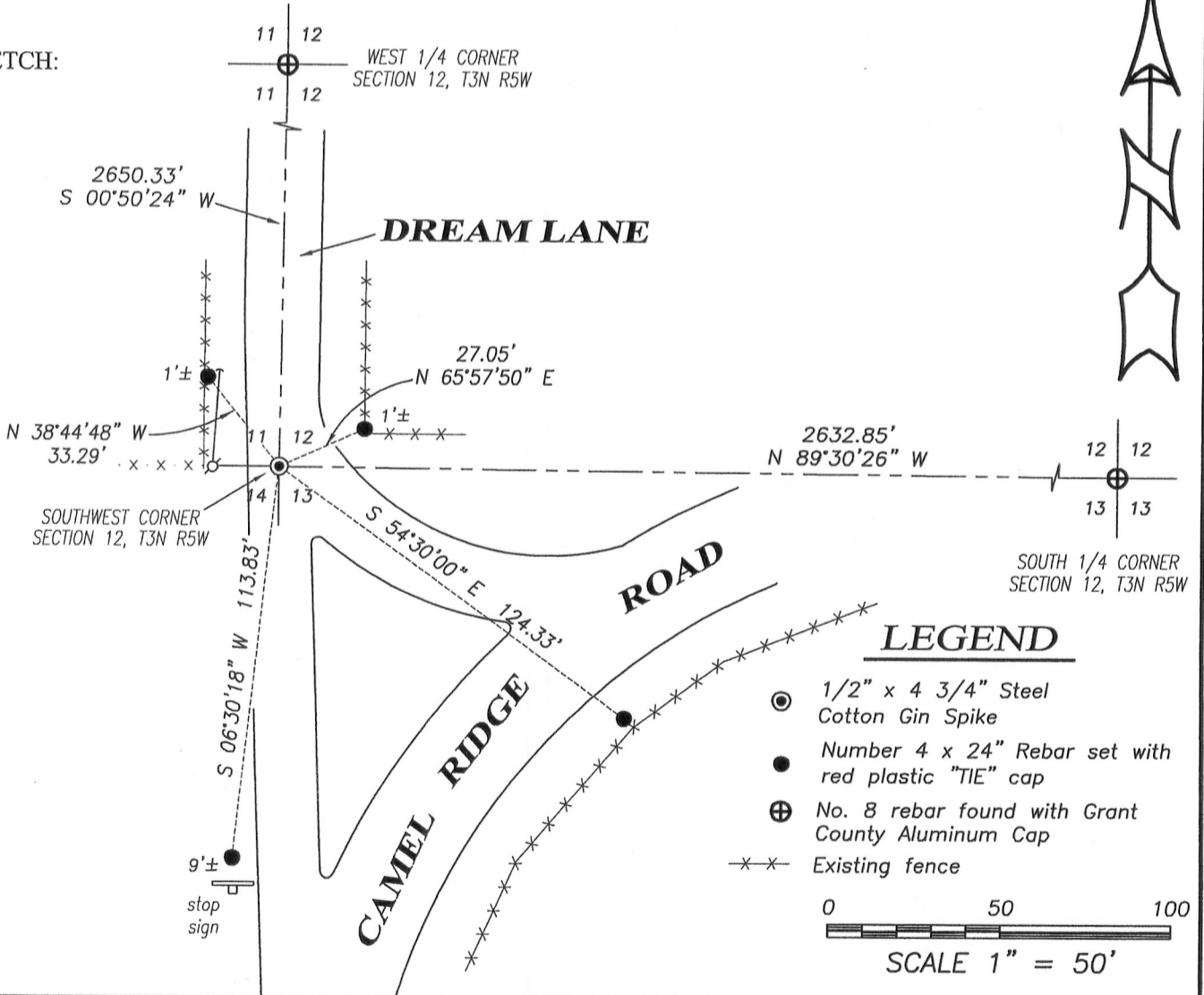
Corner originally set in 1833 by Lucius Lyon.
 No other record found for this corner.

DESCRIPTION OF CORNER EVIDENCE FOUND:

I found a P.K. Nail at the centerline of the road to the North and a projection of the centerline from the East. This also fit with remnants of a fence to the West. I set a Cotton Gin Spike in place of the P.K. after verification by G.P.S. methods.

DESCRIPTION OF CORNER AND WITNESS MONUMENTS, references and accessories used to perpetuate the original or re-established location of this corner. Witnesses to corner location Shane Austin and Aaron Austin.

SKETCH:



4211 HWY 81 E, LANCASTER, WI 53813
 PHONE: 608-723-6363 FAX: 608-723-6702

JOB NO: 13s032
 G:\T3NR5W\12
 H:\TIE\T3NR5W\89

FIELDBOOK: TDSR
 DRAWN BY: AJ AUSTIN
 CREW: SWA-AJA