



**U.S. PUBLIC LAND SURVEY MONUMENT RECORD - GRANT COUNTY, WI**

Section 7, Town 3 North Range 5 West, Town of Cassville (a)

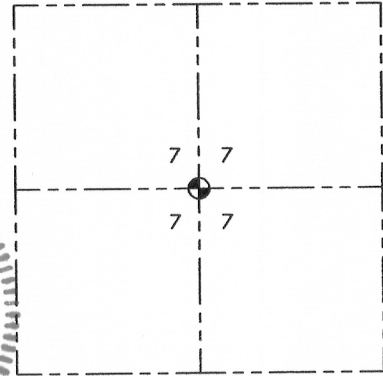
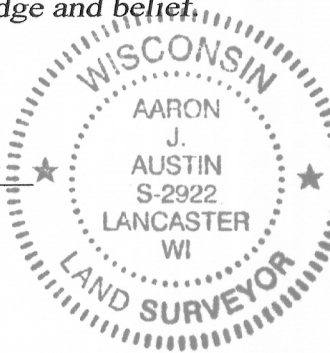
NOTE: This form is intended and designed to fulfill all requirements of the Wisconsin Administrative Code Chapter A-E 7.08, U.S. Public Land Survey Monument Record (3) (a) (b) (c) (d) (e) (f) (g) (h) (i).

**CERTIFICATE:** (i)

I, Aaron J. Austin, Wisconsin Professional Land Surveyor, do hereby certify that the corner location on this record was determined by me and/or under my direct supervision and that this U.S. Public Land Survey Monument Record is correct and complete to the best of my knowledge and belief.

Dated this 24th day of May, 2016.

*Aaron J. Austin*  
 Aaron J. Austin, S-2922



☉ = CORNER LOCATION

Grant County Coordinates:  
 WISCORS NAD 83 (2011)  
 Northing: 487,893.85  
 Easting: 739,375.05

**HISTORY OF CORNER ESTABLISHMENT:**

Corner was not set with original survey.

1842-Freeman established the corner on Survey in Book A, Page 122.

2012-Corner location was reset by Chris Higgins on Survey in Book 32, Page 61.

**DESCRIPTION OF CORNER EVIDENCE FOUND:** (b) (f) (g) (h)

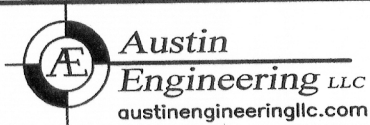
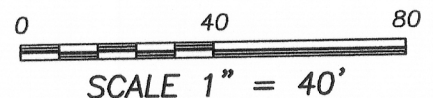
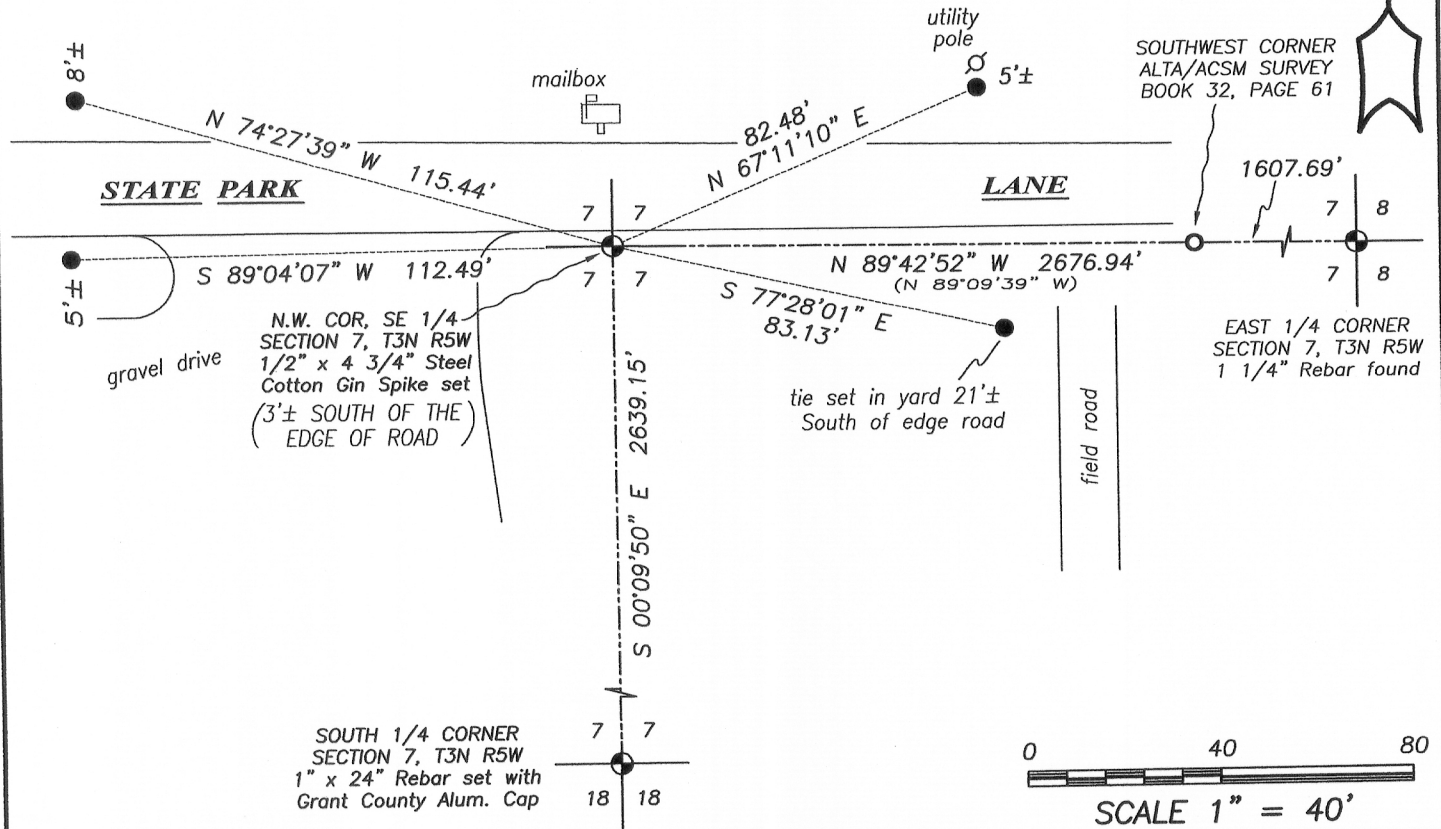
I set a 1/2" x 4 3/4" Cotton Gin Spike at Higgin's location. This corner location was determined by utilizing the 1 1/4" rebar found at the East 1/4 corner of Section 7 and a 3/4" rebar found at the Southwest corner of Higgin's survey filed in Book 32, Page 61. I set 4 witness corners as shown hereon.

**DESCRIPTION OF CORNER AND WITNESS MONUMENTS,** references and accessories used to perpetuate the original or re-established location of this corner. (c) (d) (e)  
 Witnesses to corner location Shane Austin.

SKETCH:

**LEGEND**

- ☉ Section Corner—as designated
- 3/4" Rebar found
- 1/2" x 12" rebar set



4211 HWY 81 E, LANCASTER, WI 53813  
 PHONE: 608-723-6363 FAX: 608-723-6702

JOB NO: 15s242  
 H:\CRD\15s242  
 H:\TIE\T3NR5W\34\_5

FIELDBOOK: TDSR  
 DRAWN BY: AJ AUSTIN  
 CREW: SW AUSTIN

0305072020

MAY 26 2016

34.5