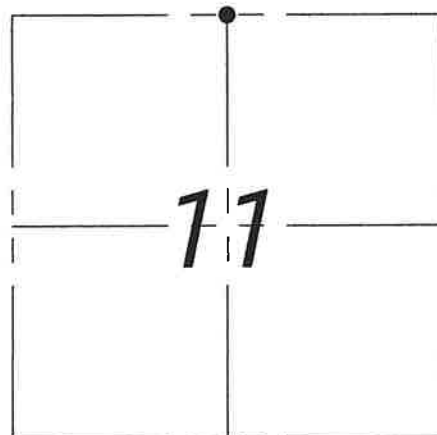


U.S. PUBLIC LAND SURVEY MONUMENT RECORD
Section 11, Township 3 North, Range 5 West, Grant County, Wisconsin

Certification:

I, Trevor A. McMann, Wisconsin Professional Land Surveyor, certify that the corner location shown on the record was determined by me or under my direction and control and that the U.S. Public Land Survey Monument Record is correct and complete to the best of my knowledge and belief, in accordance with Chapter A-E 7.08 of the Wisconsin Administration Code.



● =CORNER LOCATION

 9/12/2025
 Trevor A. McMann, S-2908-8 Date



HISTORY OF CORNER ESTABLISHMENT:

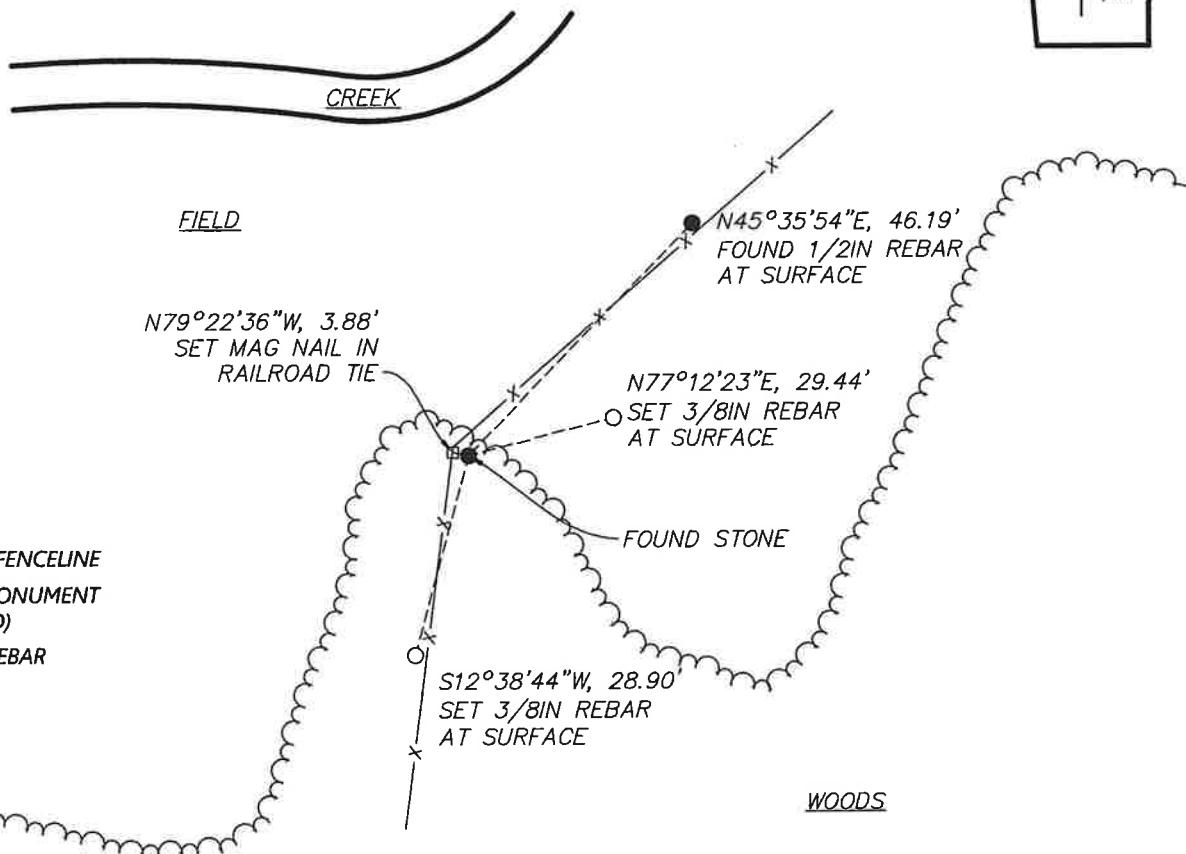
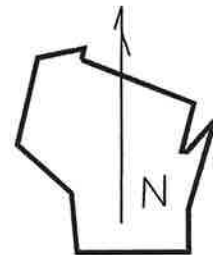
- 1833- Lucius Lyon set the original corner
- 1854- Clark tied to the corner on a survey filed in Book C, Page 56 and 57
- 1857- Hayden tied to the corner on a survey filed in Book C, Page 169
- 1993- Curtis F. Crook, notes a Berntsen monument with aluminum WISDOT cap and the following coordinates on the Wisconsin SPC south zone:
 N: 277188.16 E: 1719214.67
- 2004- Larry L. Austin, LS 1903, found a WISDOT survey sign at the base of a stone. accepted stone and made 4 ties.
- 2004- Larry L. Austin, LS 1903, section 2 breakdown shows a found stone monument and a distance of 2610.99' to NE11
- 2004- Larry L. Austin, LS 1903, found a stone monument while surveying in section 2.
- 2016- Aaron J. Austin, LS 2922, found a stone monument and 2 ties of record. Set 2 additional
- 2022- Westwood searched and found 9"x11"x8" stone in agreement with 2016 corner record filed by LS 2922. Established two additional references.

DESCRIPTION OF CORNER EVIDENCE FOUND:


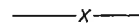


Searched and found 9"x11"x8" stone in agreement with 2016 corner record filed by LS 2922. Established two additional references.

Location Diagram, showing corner identification name, bearing and distance references to at least four witness monuments, fence or occupational lines, centerlines of roads, and other site details for reference. Also, show the bearings and distances between the witness monuments.

North Quarter Corner of Section 11, Township 3 North, Range 5 West, Grant County, Wisconsin



LEGEND

-  TREELINE
-  EXISTING FENCELINE
-  FOUND MONUMENT (AS NOTED)
-  SET 3/8" REBAR

U.S. PUBLIC LAND SURVEY MONUMENT RECORD - GRANT COUNTY, WI

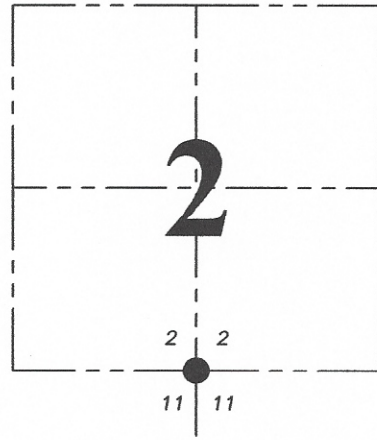
Section 2, Town 3 North Range 5 West, Town of Cassville

CERTIFICATE:

I, Aaron J. Austin, Wisconsin Professional Land Surveyor, do hereby certify that the corner location on this record was determined by me and/or under my direct supervision and that this U.S. Public Land Survey Monument Record is correct and complete to the best of my knowledge and belief.

Dated this 16th day of March, 2016.

Aaron J. Austin
 Aaron J. Austin, S-2922



● = CORNER LOCATION

GRANT COUNTY COORDINATES-NAD 83(2011)
 NORTHING: 490,405.20 EASTING: 760,567.06

HISTORY OF CORNER ESTABLISHMENT:

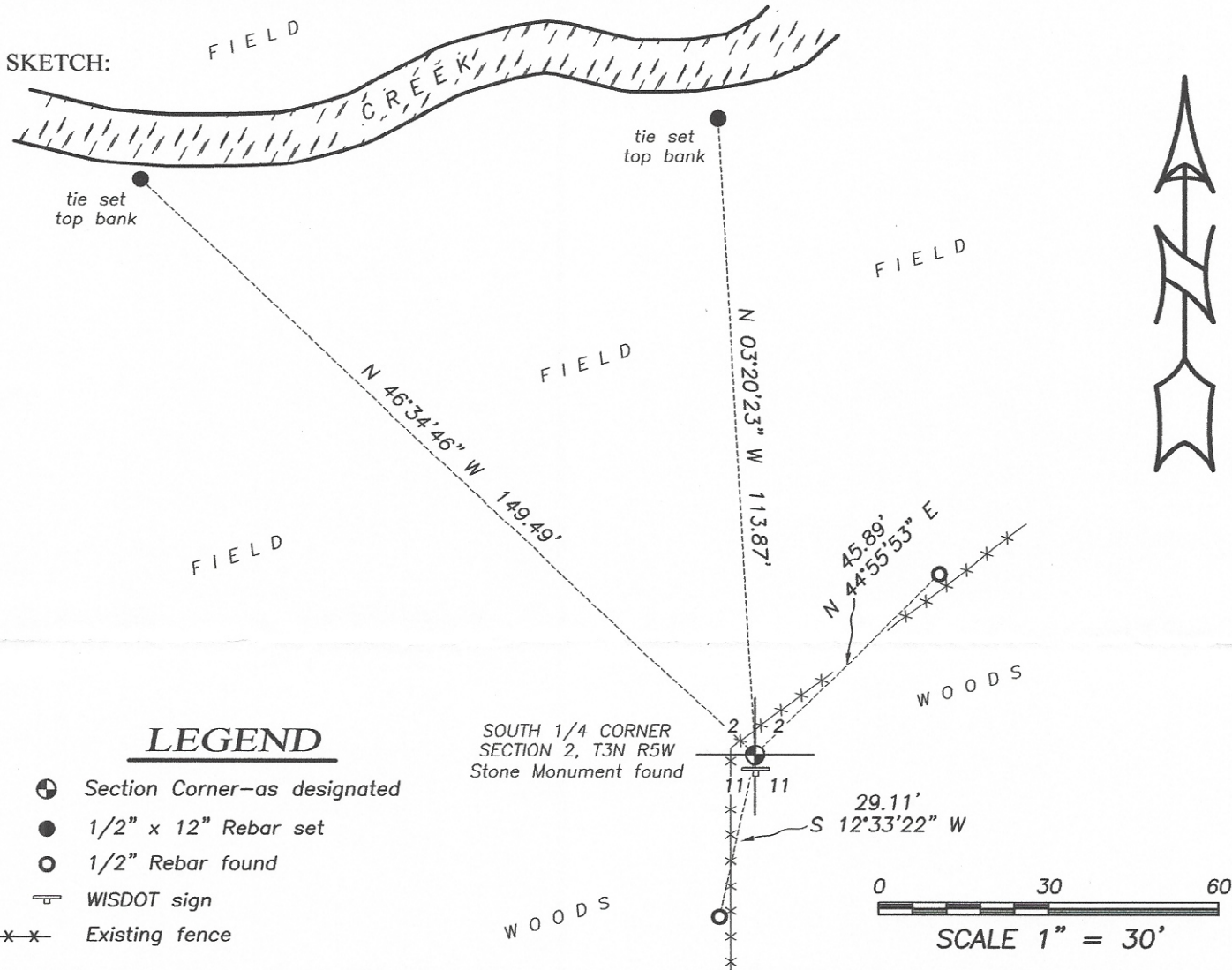
- 1833-Lucius Lyon set original corner.
- 1854, Clark tied to the corner on a Survey filed in Book C, Page 56.
- 1854-Clark tied to the corner on a Survey filed in Book C, Page 57.
- 1857-Hayden tied to the corner on a Survey filed in Book C, Page 169.
- 2004-Larry Austin tied to the corner on a Survey filed in Book 14, Page 85.
- 2004-Larry Austin tied to the corner on a Survey filed in Book 16, Page 20.
- 2004-Larry Austin prepared a U.S. Public Land Survey Monument Record.

DESCRIPTION OF CORNER EVIDENCE FOUND:

I found the Stone as tied out by Larry Austin. I found 2 witness corners and set two additional corners after I verified this location with E.D.M. and G.P.S. methods.

DESCRIPTION OF CORNER AND WITNESS MONUMENTS, references and accessories used to perpetuate the original or re-established location of this corner. Witnesses to corner location Shane Austin.

SKETCH:



LEGEND

- ⊕ Section Corner—as designated
- 1/2" x 12" Rebar set
- 1/2" Rebar found
- ⊞ WISDOT sign
- x-x- Existing fence

Austin Engineering LLC
 austinengineeringllc.com
 4211 HWY 81 E, LANCASTER, WI 53813
 PHONE: 608-723-6363 FAX: 608-723-6702

JOB NO: 15s239
 H:\CRD\15s239
 H:\TIE\T3NR5W\24

FIELDBOOK: TDSR
 DRAWN BY: AJ AUSTIN
 CREW: SW AUSTIN

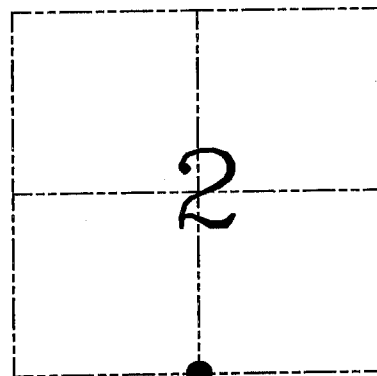
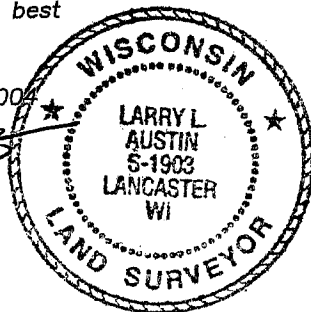
U.S. PUBLIC LAND SURVEY MONUMENT RECORD – GRANT COUNTY, WI
Section 2, Town 3 North Range 5 West, Town of Cassville

CERTIFICATE

I, Larry L. Austin, do hereby certify that the corner location on this record was determined by me and/or under my direct supervision and that this U.S. public land survey monument record is correct and complete to the best of my knowledge and belief.

Dated this 27th day of May, 2004

Larry L. Austin
 Larry L. Austin S-1903



● = CORNER LOCATION

HISTORY OF CORNER ESTABLISHMENT

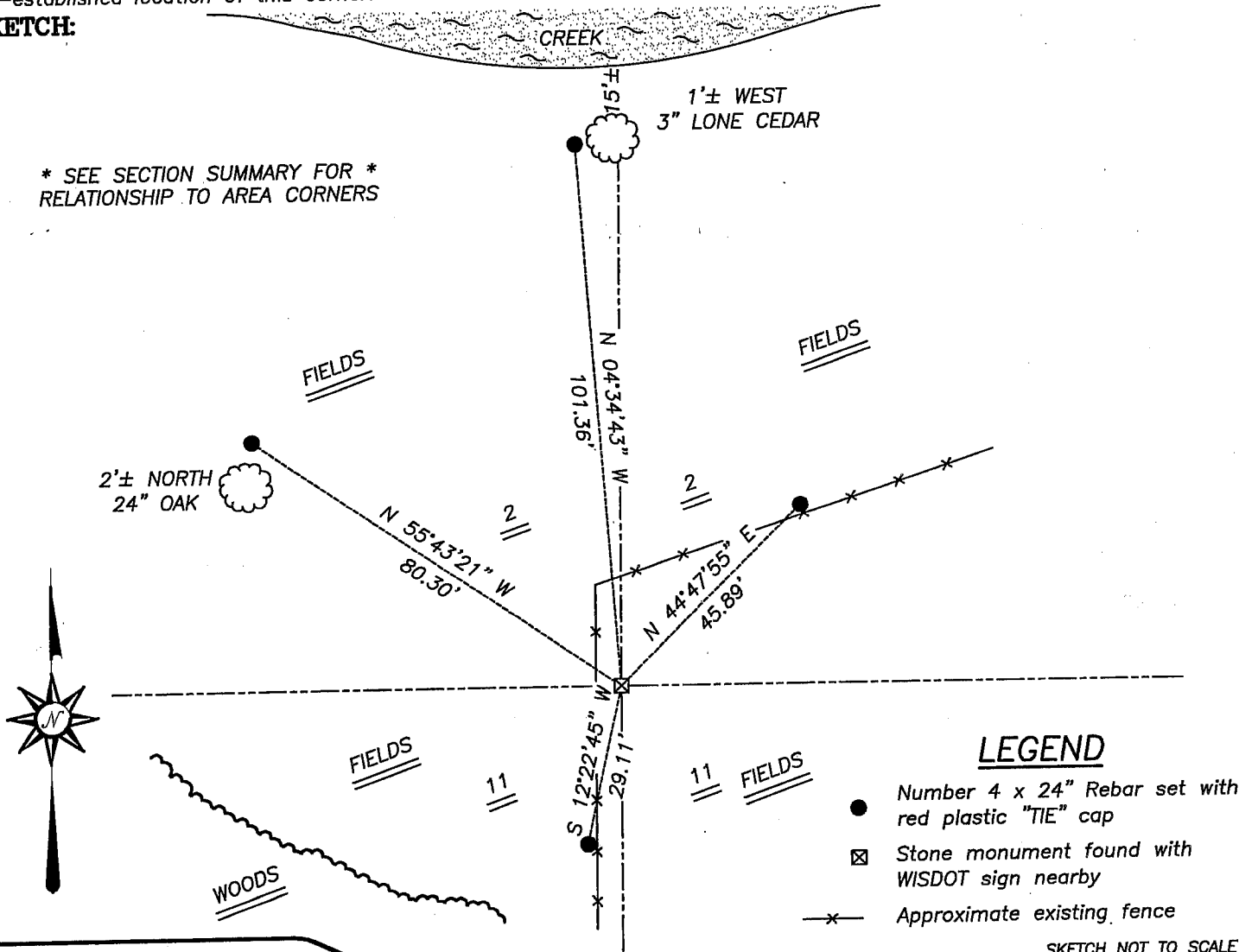
Corner was originally set in 1833 by Lucius Lyon. In 1854 John Clark was at the corner and established new bearings. In 1997 a sheet was filed stating a Bernsten aluminum monument with DOT aluminum cap was placed for a Wisconsin DOT project by Mr Crook.

DESCRIPTION OF CORNER EVIDENCE FOUND

While locating the monument I found a WISDOT survey sign at the base of a stone. This monument differed from the monument of record. Local land owner stated that Mr. Crook located the stone while surveying for WISDOT. I accepted the stone and set new ties. I verified this location using EDM & GPS methods.

DESCRIPTION OF CORNER AND WITNESS MONUMENTS, references and accessories used to perpetuate the original or re-established location of this corner. Witnesses to corner location Bobby Sedgwick & Shane Austin & Brad Hazen

SKETCH:

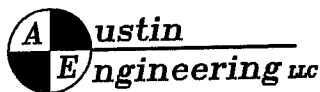


* SEE SECTION SUMMARY FOR *
 RELATIONSHIP TO AREA CORNERS

LEGEND

- Number 4 x 24" Rebar set with red plastic "TIE" cap
- ☒ Stone monument found with WISDOT sign nearby
- x- Approximate existing fence

SKETCH NOT TO SCALE



4211 HWY 81 E, LANCASTER, WI 53813
 PHONE 608-723-6363 FAX 608-723-6702

JOB NUMBER 03S268
 FIELDBOOK: TSDR, 2327
 G:\T4NR5W\34
 H:\TIE\T3NR5W\24

DRAWN BY: C RUTTER
 APPROVED: LL AUSTIN