

U.S. PUBLIC LAND SURVEY MONUMENT RECORD
Section 11, Township 3 North, Range 5 West, Grant County, Wisconsin

Certification:

I, Trevor A. McMann, Wisconsin Professional Land Surveyor, certify that the corner location shown on the record was determined by me or under my direction and control and that the U.S. Public Land Survey Monument Record is correct and complete to the best of my knowledge and belief, in accordance with Chapter A-E 7.08 of the Wisconsin Administration Code.



● = CORNER LOCATION

 9/12/2025
 Trevor A. McMann, S-2908-8 Date



HISTORY OF CORNER ESTABLISHMENT:

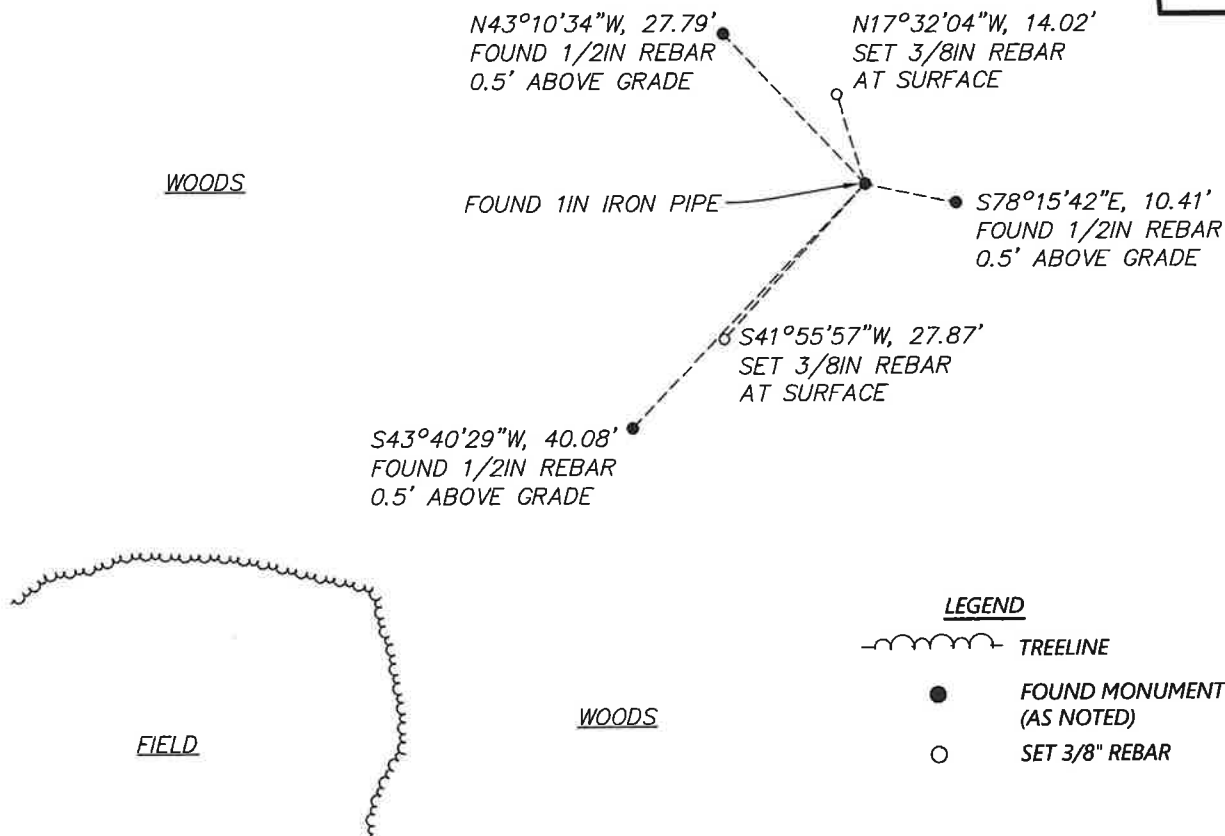
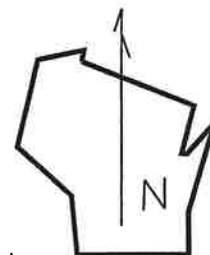
- 1833- Lucius Lyon set the original corner.
- 1970- Homer D. Ralph JR, LS 141, used this corner during a survey of section 2 but does not state what was found or set.
- 2004- Larry L. Austin, LS 1903, found a 1" iron pipe. 4 ties were made.
- 2004- Larry L. Austin, LS 1903, found a 1" iron pipe while surveying in section 2.
- 2004- Larry L. Austin, LS 1903, section 2 breakdown shows a found 1" pipe with a distance of 2610.99' to the NQ11.
- 2009- Larry L. Austin, LS 1903, found a 1" pipe while surveying in section 12. shows a distance of 2637.10' to the EQ11.
- 2022- Westwood searched and found 1" iron pipe in agreement with 2004 corner record filed by LS 1903. Established two additional references.

DESCRIPTION OF CORNER EVIDENCE FOUND:

Searched and found a 1" iron pipe in agreement with 2004 corner record filed by LS 1903. Established two additional references.

Location Diagram, showing corner identification name, bearing and distance references to at least four witness monuments, fence or occupational lines, centerlines of roads, and other site details for reference. Also, show the bearings and distances between the witness monuments.

Northeast Corner of Section 11, Township 3 North, Range 5 West, Grant County, Wisconsin



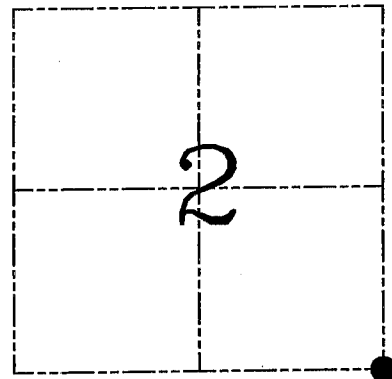
U.S. PUBLIC LAND SURVEY MONUMENT RECORD – GRANT COUNTY, WI
Section 2, Town 3 North Range 5 West, Town of Cassville

CERTIFICATE

I, Larry L. Austin, do hereby certify that the corner location on this record was determined by me and/or under my direct supervision and that this U.S. public land survey monument record is correct and complete to the best of my knowledge and belief.

Dated this 25th day of May, 2004

Larry L. Austin
 Larry L. Austin S-1903



● = CORNER LOCATION

HISTORY OF CORNER ESTABLISHMENT

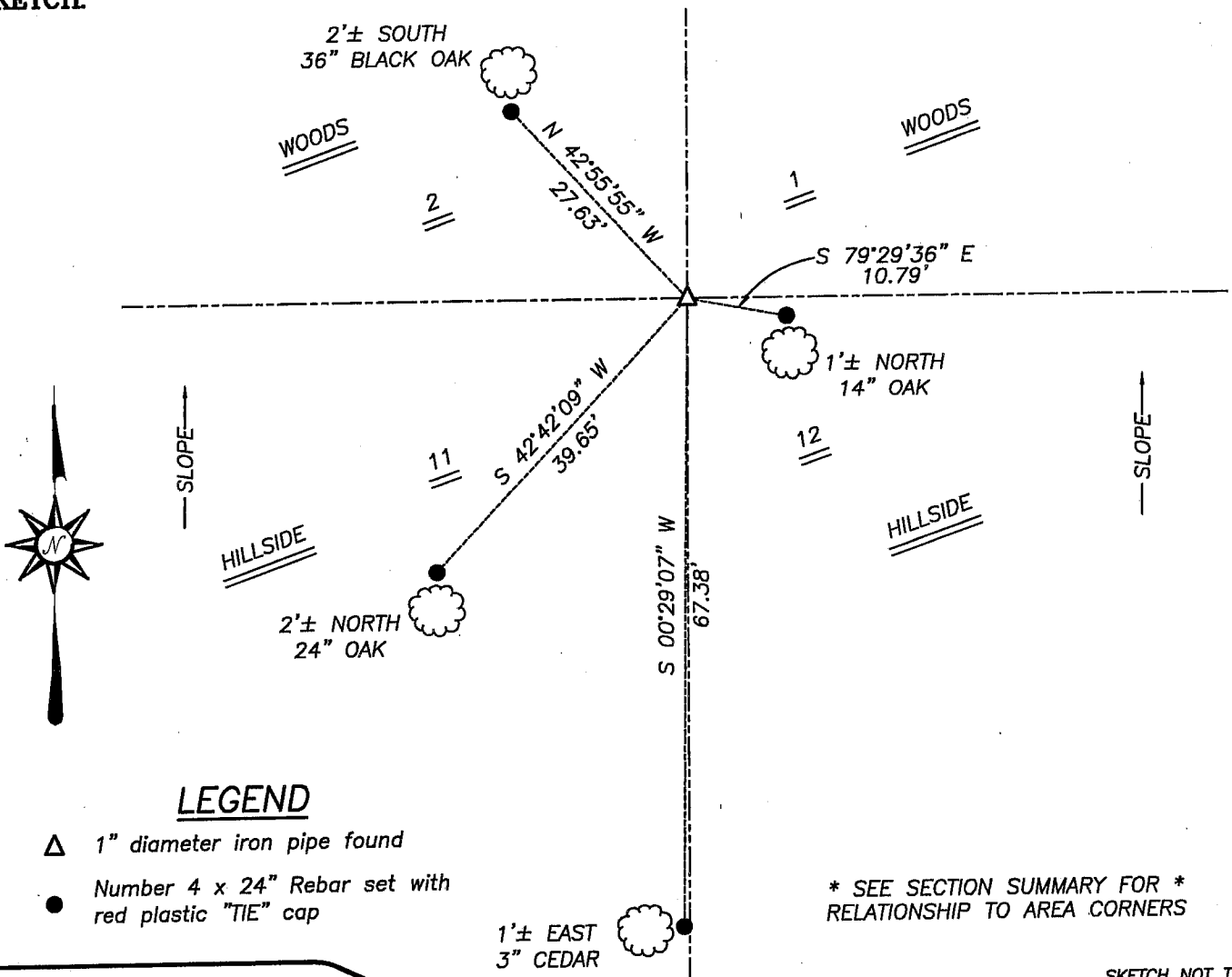
Corner was originally set in 1833 by Lyon. In 1974 Ralph showed the corner on a survey for Reidl with no mention of monument. No other record of the corner was found.

DESCRIPTION OF CORNER EVIDENCE FOUND

While retracing the Ralph survey I found a 1" iron pipe at the location shown by the Ralph survey. I accepted it's location after verification to many adjoining corners, occupied and monumented.

DESCRIPTION OF CORNER AND WITNESS MONUMENTS, references and accessories used to perpetuate the original or re-established location of this corner. Witnesses to corner location Brad Digman and Shelby Blindert

SKETCH:

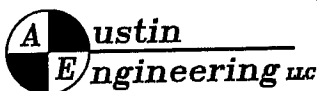


LEGEND

- △ 1" diameter iron pipe found
- Number 4 x 24" Rebar set with red plastic "TIE" cap

* SEE SECTION SUMMARY FOR *
 RELATIONSHIP TO AREA CORNERS

SKETCH NOT TO SCALE



4211 HWY 81 E, LANCASTER, WI 53813
 PHONE 608-723-6363 FAX 608-723-6702

JOB NUMBER 03S268
 FIELDBOOK: TSDR, 2327
 G:\T4NR5W\34
 H:\TIE\T3NR5W\23

DRAWN BY: C RUTTER
 APPROVED: LL AUSTIN