

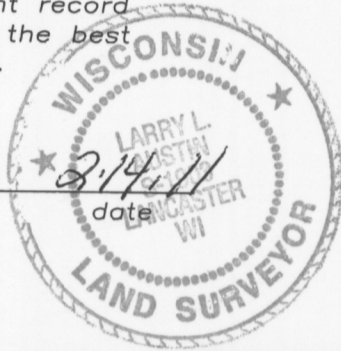
U.S. PUBLIC LAND SURVEY MONUMENT RECORD

Section 1, Town 3 North Range 5 West, Town of Cassville, Grant County, Wisconsin

CERTIFICATE

I, Larry L. Austin, do hereby certify that the corner location on this record was determined by me and/or under my direct supervision and that this U.S. public land survey monument record is correct and complete to the best of my knowledge and belief.

Larry L. Austin
Larry L. Austin, S-1903



● = CORNER LOCATION

HISTORY OF CORNER

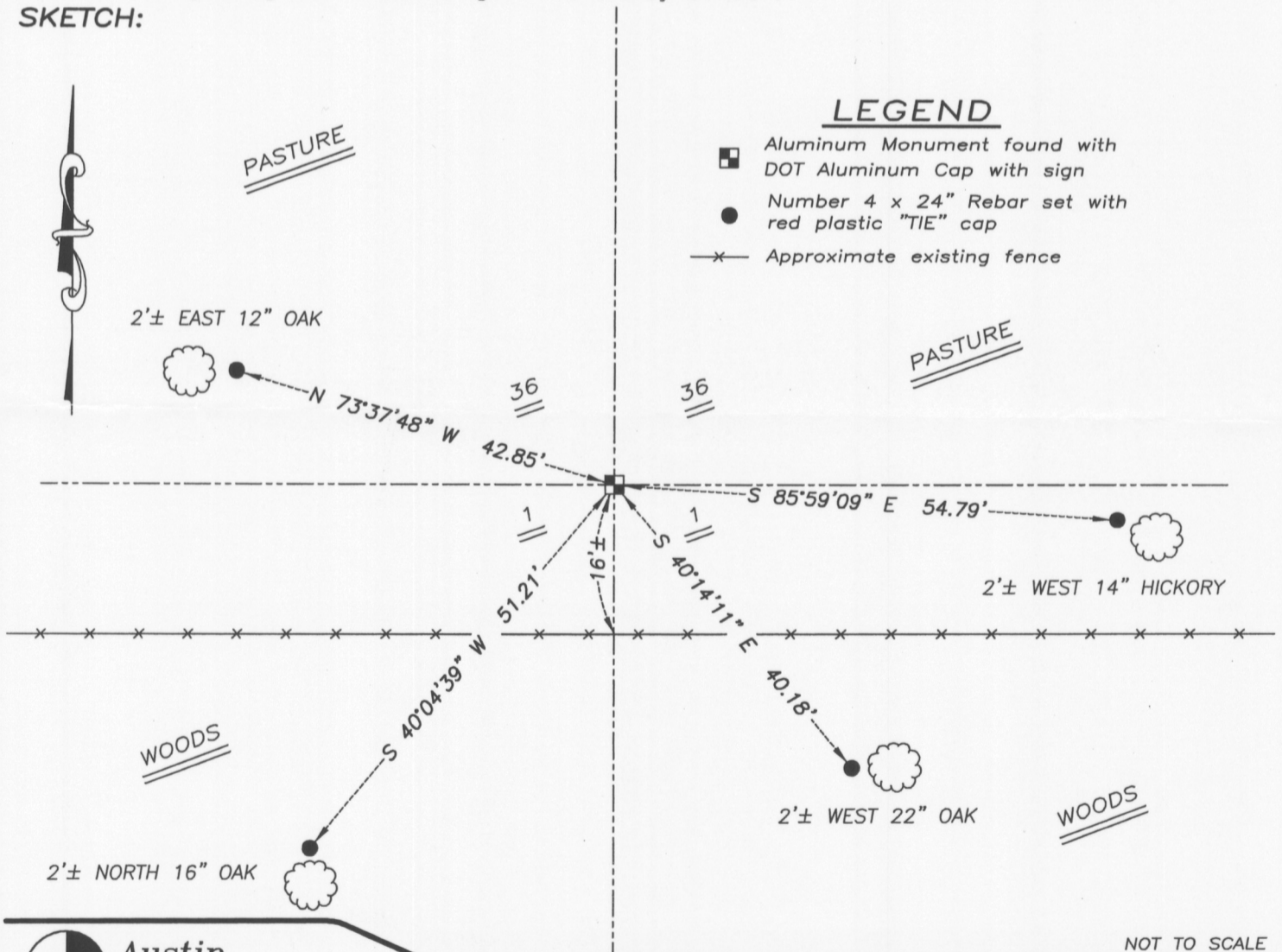
Corner was originally set in 1832 by Lyon. In 1908 Appleby tied to all of the corners of Section 1. In 1992 Crook set the corner while working for the Wisconsin Department of Transportation. No other record of the corner was found.

CORNER EVIDENCE FOUND

I found the DOT Aluminum monument and accepted it's location after an EDM & GPS traverse of the area.

DESCRIPTION OF CORNER AND WITNESS MONUMENTS, references and accessories used to perpetuate the original or reestablished location of this corner. Witnesses to monument location Bobby Sedgwick & Brad Digman & Shelby Blindert

SKETCH:



LEGEND

- Aluminum Monument found with DOT Aluminum Cap with sign
- Number 4 x 24" Rebar set with red plastic "TIE" cap
- x— Approximate existing fence



Austin Engineering LLC

4211 HWY 81 E, LANCASTER, WI 53813
PHONE 608-723-6363 FAX 608-723-6702

JOB NUMBER 09S015
FIELDBOOK: TDSR, 2710
G:\T4NR5W\34
H:\TIE\T3NR5W\02

DRAWN BY: SW AUSTIN
APPROVED: LL AUSTIN

NOT TO SCALE

02

FEB 18 2011