

GRANT COUNTY

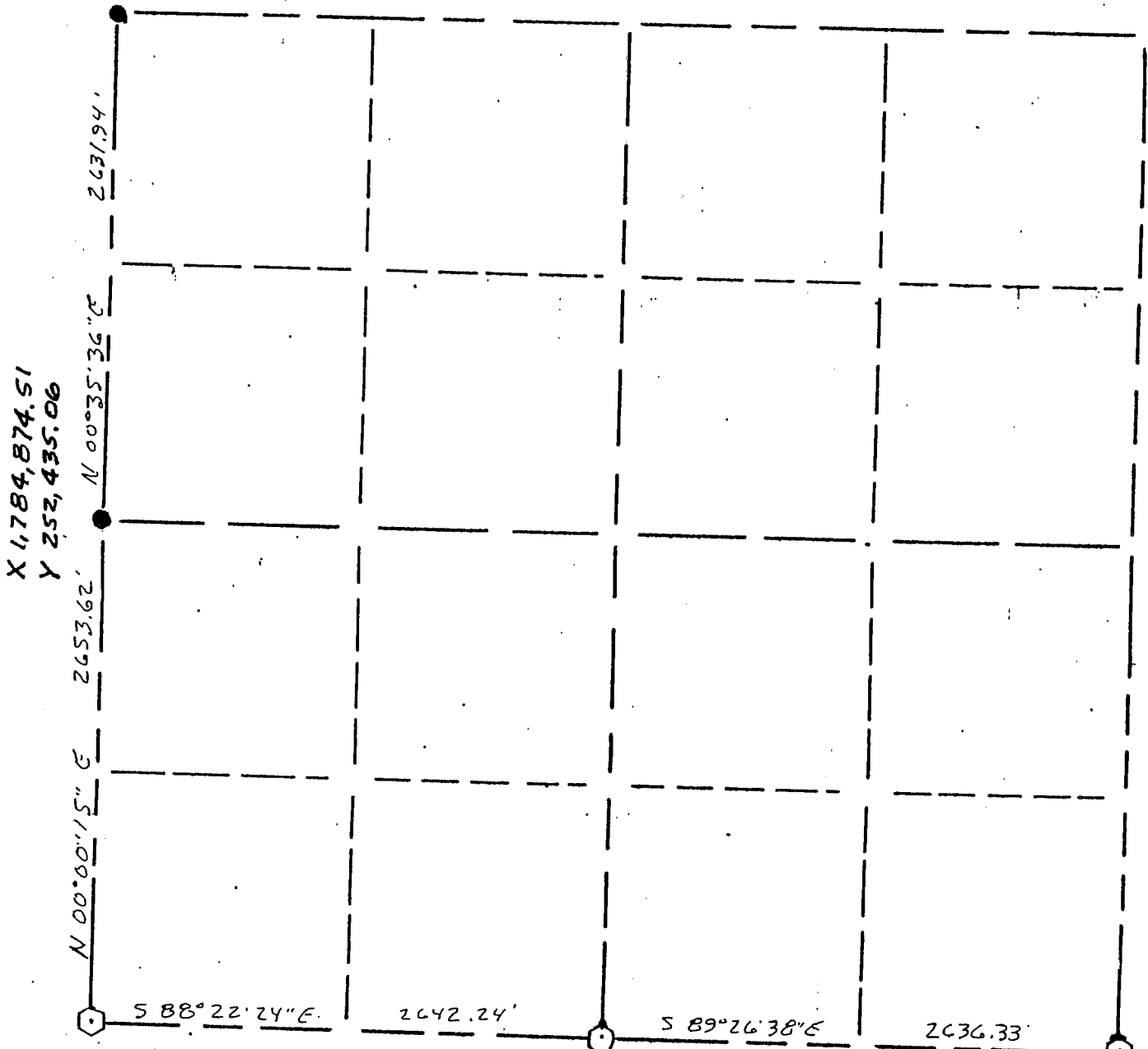
Section Summary

Waterloo

36 - 3 North - 4 West
SECTION TOWN RANGE

X 1,784,901.77
Y 255,066.79

SEP 13 1989



X 1,784,874.51
Y 252,435.06

2631.94'

N 00°35'36\"/>

2653.62'

N 00°00'15\"/>

S 88°22'24\"/>

2642.24'

S 89°26'38\"/>

2636.33'

X 1,784,874.32
Y 249,781.51

X= 1787515.43 Wis. Coord. Sys. X 1,790,151.56
Y= 249706.51 Y 249,680.92



Note: in referring to coordinates on related Sections of this survey, scale factor of .9999739 used.

LEGEND

- △ COUNTY MONUMENT
- STONE OR CONCRETE MONUMENT
- OTHER (specify) 2" Iron Pipe (found)

NOTE:
Relationships of all section corners to other section corners shall be shown hereon by bearing and distance or grid coordinates

Show or describe bearing reference Wis. coordinate system, South Zone

Wis. Dept. of Transportation
2" X 30" Aluminum Monument w/cap (set)

F. Curtis Crook RLS #1292
(Readstown Wi., 54652)
608-629-5429

