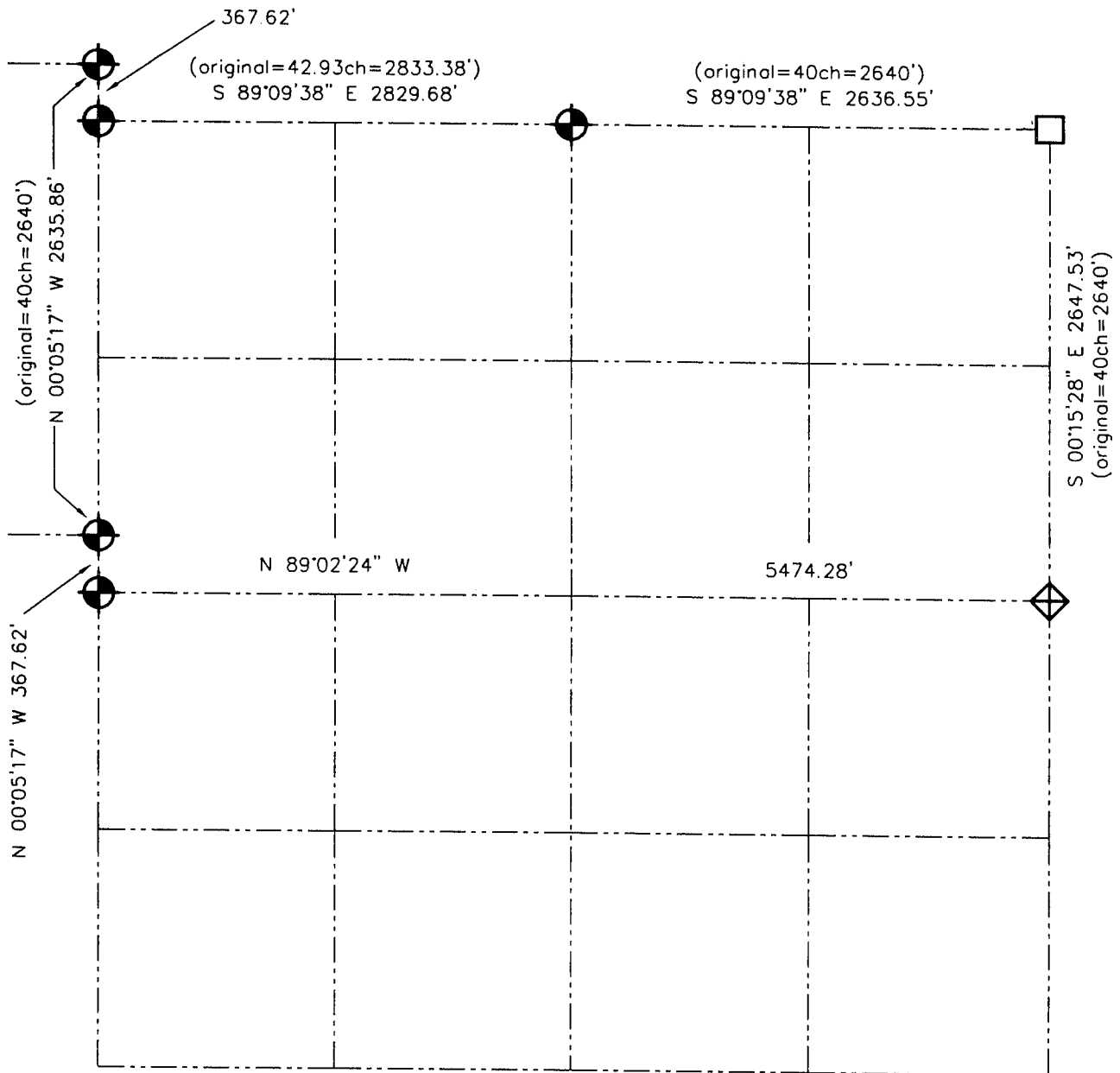





U.S. PUBLIC LAND SURVEY MONUMENT RECORD - GRANT COUNTY, WI
 Summary of Section 31, Town 3 North Range 4 West, Town of Waterloo




LEGEND

-  NUMBER 8 x 30" REBAR SET WITH GRANT COUNTY ALUMINUM CAP
-  ARMY CORP MONUMENT FOUND (4" IRON PIPE)
-  NUMBER 10 IRON BAR FOUND
- () RECORDED AS (AS DESIGNATED)



Relationship of all section corners to other section corners shall be shown hereon by bearing and distance or grid coordinates. Bearing reference shown below.


 Dated this 29th day of March, 2001
Larry L. Austin
 Larry L. Austin, S-1993

Bearings referenced to the East-West Quarter line of Section 31, which is assumed to bear N 89°02'24" W.

SKETCH NOT TO SCALE

AUSTIN ENGINEERING, LLC
 4211 HWY 81 EAST, LANCASTER, WI 53813
 PHONE 608-723-6363 FAX 608-723-6702

FIELDBOOK: SDR33, 2004, 2015
 G: \T3NR4W\31 2017, 2034
 C: \SWA\TIE\T3NR4W\31SUM

CREW: BS-SB-SA-TF
 APPROVED: LL AUSTIN
 APPROVED: LL AUSTIN