

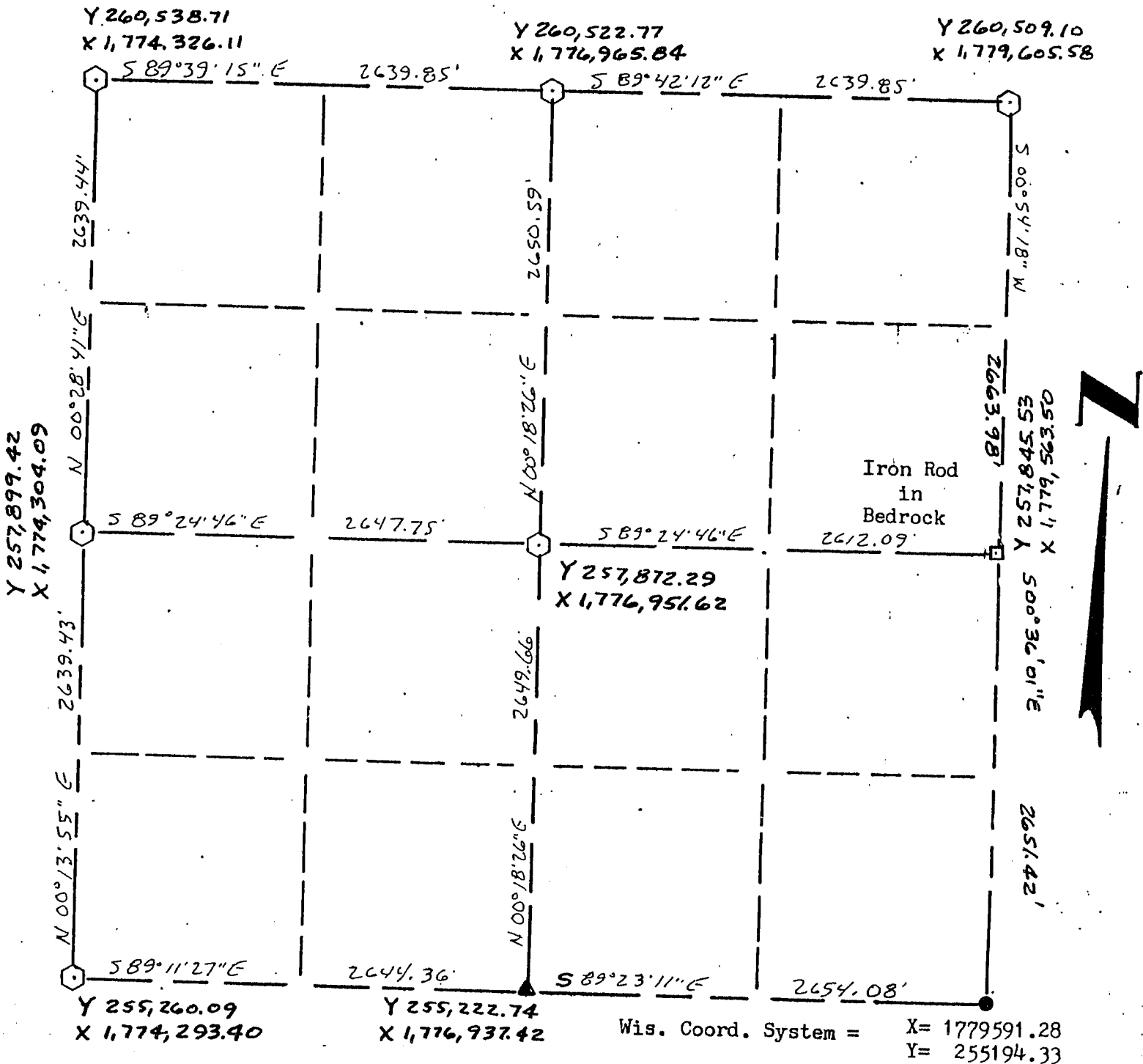
GRANT COUNTY

Waterloo

Section Summary

27 - 3 North - 4 West
SECTION TOWN RANGE

SEP. 13 1989



Note: in referring to coordinates on related Sections of this survey, scale factor of .9999739 used.

LEGEND

- ▲ COUNTY MONUMENT
- STONE ~~OR CONCRETE~~ MONUMENT
- OTHER (specify) 1" Iron Pipe (found) with star drill, made 3/4" X 6" hole in bedrock, 16" below surface; inserted 3/4" X 30" I. ROD or describe bearing reference
- Wis. Dept. of Transportation 2" X 30" Aluminum Monument w/cap (set)

NOTE:
Relationships of all section corners to other section corners shall be shown hereon by bearing and distance or grid coordinates

F. Curtis Crook RLS #1292
(Readstown Wi., 54652)
608-629-5429

