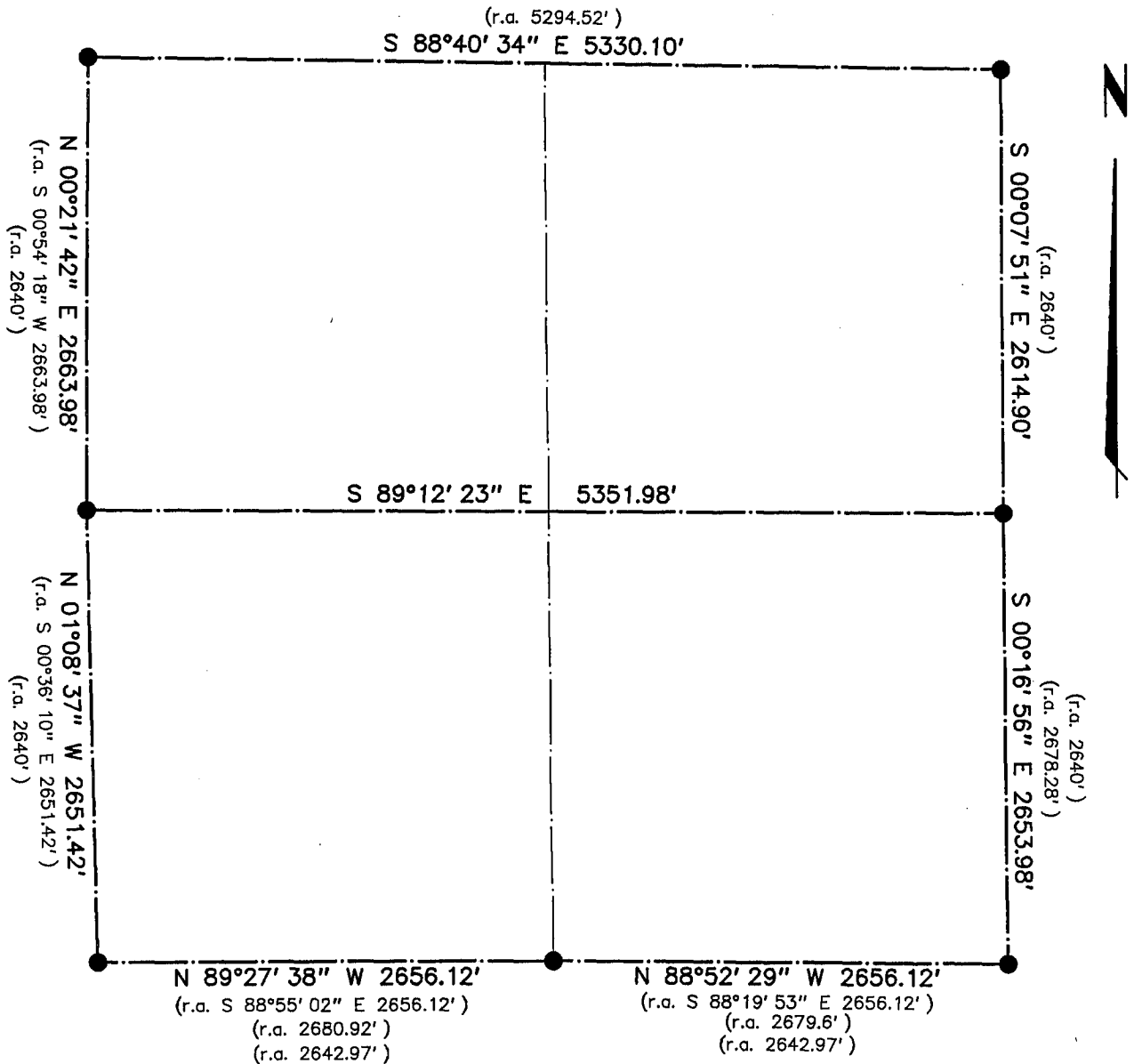
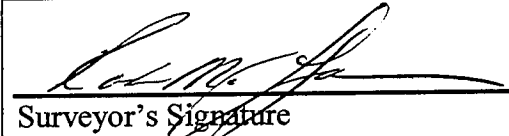



GRANT COUNTY SECTION DATA SHEET

Section 26 , Town 3 North, Range 4 West



Bearings referenced to the Grant County Coordinate System.

 Surveyor's Signature Date: 11-17-1999  Seal	Corner	Monument Description
	NE Corner	Set 3/4" x 30" Iron Bar w/ Grant Co. Alum. Cap
	E 1/4 Corner	Existing 3/4" Iron Bar w/ Grant Co. Alum. Cap
	SE Corner	Existing 2" Iron Pipe
	S 1/4 Corner	Existing WisDOT Aluminum Monument as per information from tie sheet by F. Curtis Crook
	SW Corner	Existing 1" Iron Pipe
	W 1/4 Corner	Existing 3/4" iron bar in Red Rock as per information from section summary - F. Curtis Crook
	NW Corner	Existing WisDOT Aluminum Monument