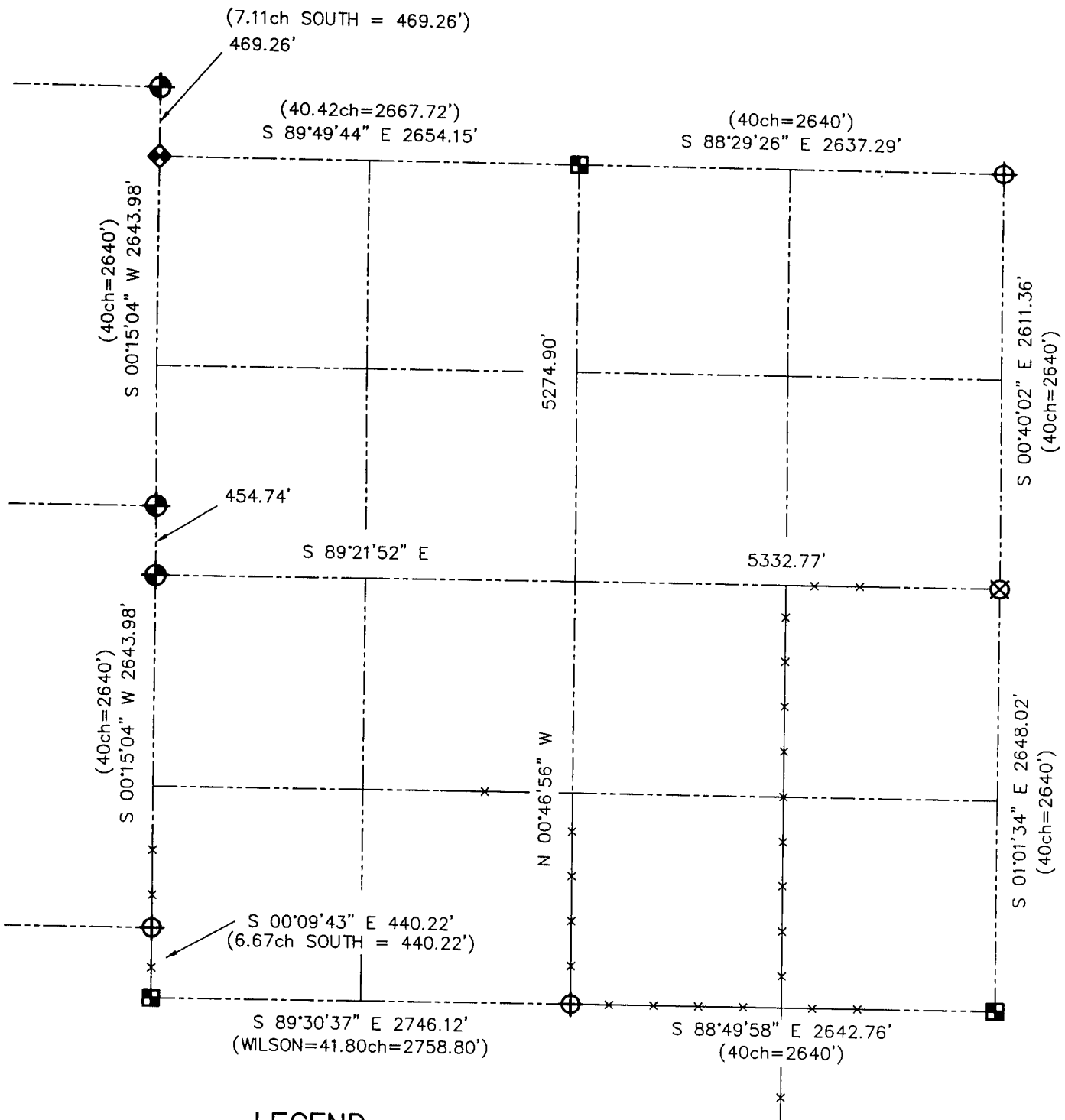


U.S. PUBLIC LAND SURVEY MONUMENT RECORD - GRANT COUNTY, WI
 Summary of Section 18, Town 3 North Range 4 West, Town of Waterloo



LEGEND

- NUMBER 8 x 30" REBAR SET WITH GRANT COUNTY ALUMINUM CAP
- NUMBER 7 IRON BAR FOUND
- NUMBER 8 REBAR FOUND WITH GRANT COUNTY ALUMINUM CAP
- ALUMINUM MONUMENT FOUND WITH GRANT COUNTY ALUMINUM CAP
- ALUMINUM MONUMENT SET WITH GRANT COUNTY ALUMINUM CAP
- () RECORDED AS



Relationship of all section corners to other section corners shall be shown hereon by bearing and distance or grid coordinates. Bearing reference shown below.

Dated this 21st day of December, 2001
 Larry L. Austin

Bearings referenced to the North-South 1/4 line of Section 18, which is assumed to bear N 00°46'56" W.

SKETCH NOT TO SCALE

AUSTIN ENGINEERING, LLC

4211 HWY 81 EAST, LANCASTER, WI 53813
 PHONE 608-723-6363 FAX 608-723-6702

FIELDBOOK: SDR33, 2031
 G: \T3NR4W\18GCC
 C: \SWA\TIE\T3NR4W\18SUM

CREW: BS-SB-SA-TF
 DRAWN BY: SW AUSTIN
 APPROVED: LL AUSTIN