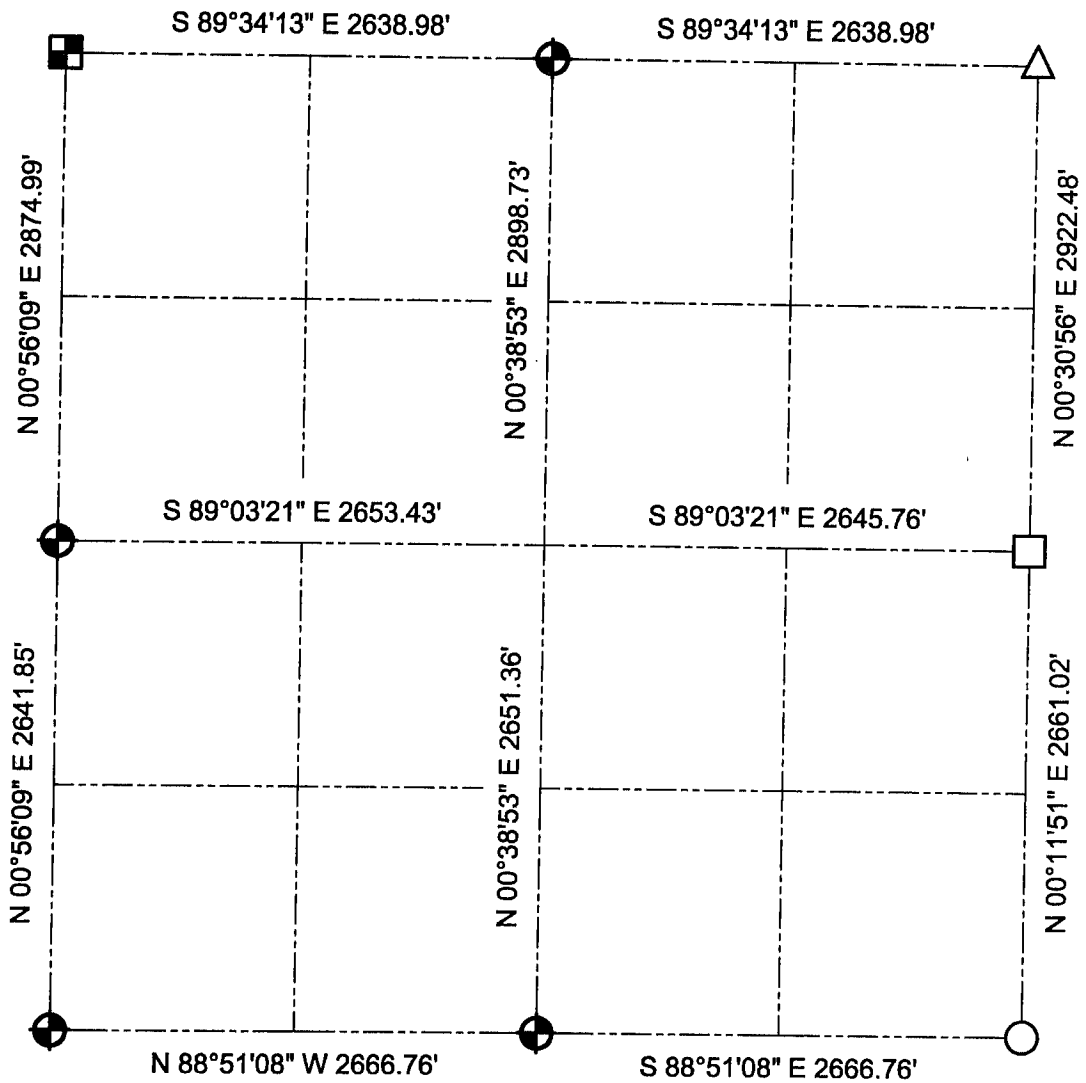







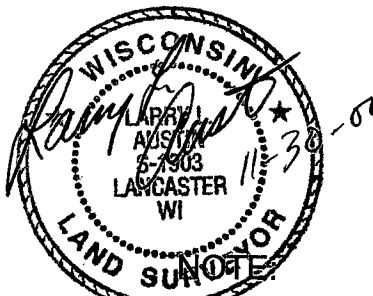
# GRANT COUNTY SECTION SUMMARY

$\frac{2}{SECTION} - \frac{3N}{TOWN} - \frac{4W}{RANGE}$



### LEGEND

-  Number 8 x 30" rebar set with Grant County Aluminum Cap
-  Existing Aluminum monument with Grant County Aluminum Cap
-  Existing Number 6 rebar
-  Existing pipe post in concrete
-  Existing Railroad Spike



Relationships of all section corners to other section corners shall be shown hereon by bearing and distance or grid coordinates.  
~Bearing reference below~



Bearings referenced to the North - South Quarter line of Section 2, which is assumed to bear N 00°38'53" E.

**AUSTIN ENGINEERING, LLC**  
4211 HWY 81 E, LANCASTER, WI 53813  
PHONE 608-723-6363 FAX 608-723-6702

FIELDBOOK: SDR33, 20-31  
G:\T3NR4W\15A  
C:\SC14\SWA\T3NR4W\02SUM

DRAWN BY: SW AUSTIN  
APPROVED: LL AUSTIN  
CREW: BS - SB - SA - TF