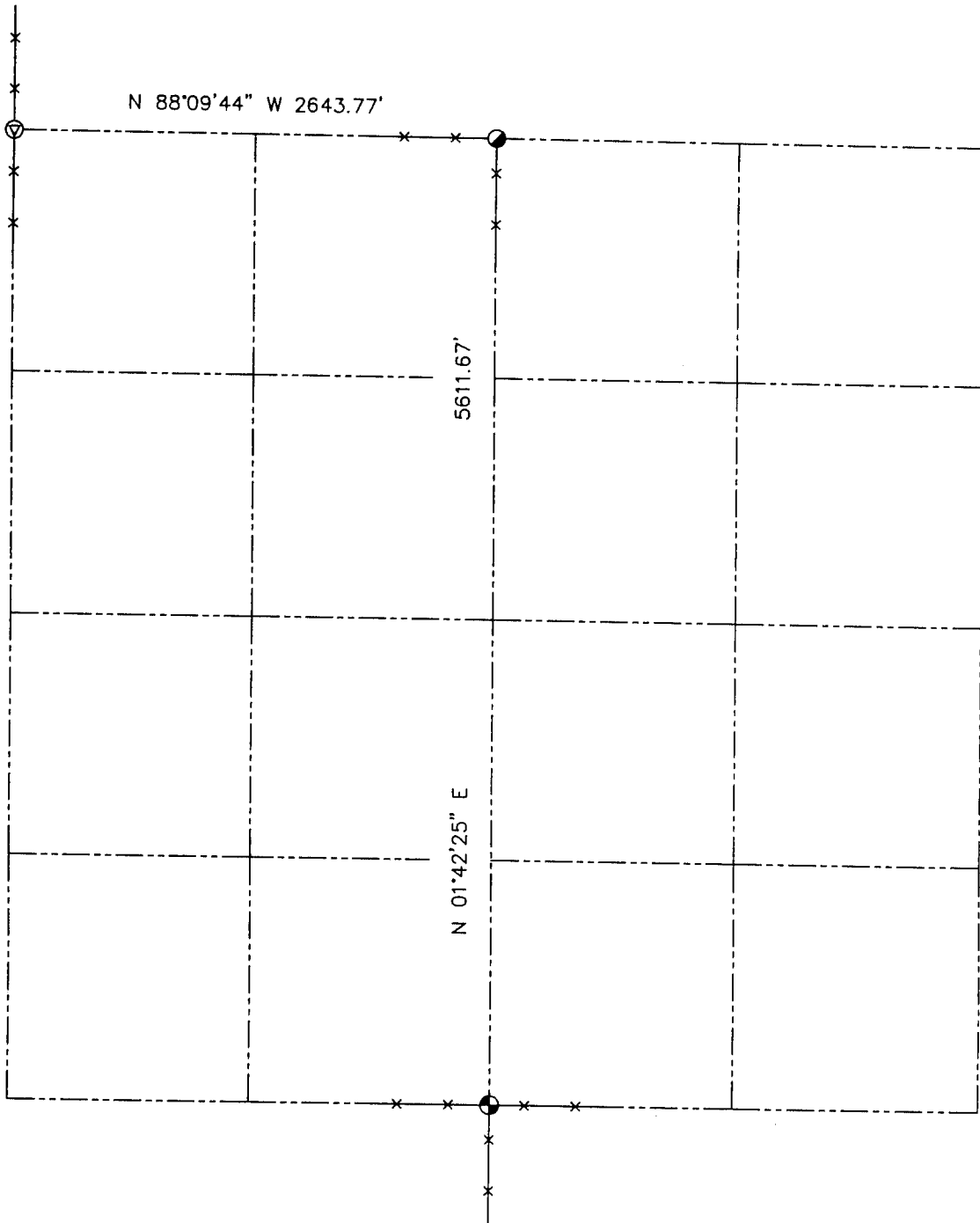


U.S. PUBLIC LAND SURVEY MONUMENT RECORD - GRANT COUNTY, WI
 Summary of Section 1, Town 3 North Range 4 West, Town of Waterloo



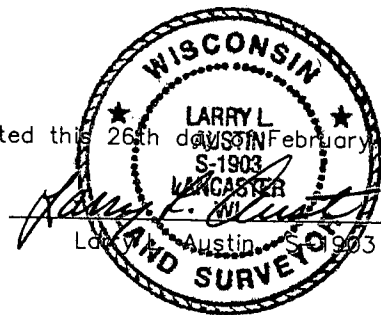
LEGEND

- ⊙ No. 8 x 30" rebar set with Grant County Aluminum Cap - wt=2.67#/l.f.
- ⊕ Railroad spike found
- Angle iron post in concrete found
- x— Approximate location of existing fence



Relationship of all section corners to other section corners shall be shown hereon by bearing and distance or grid coordinates. Bearing reference shown below.

Dated this 26th day of February, 2002



Bearings referenced to the North line of the Northwest Quarter of Section 1, which is assumed to bear N 88°09'44" W.

SKETCH NOT TO SCALE

AUSTIN ENGINEERING, LLC

4211 HWY 81 EAST, LANCASTER, WI 53813
 PHONE 608-723-6363 FAX 608-723-6702

FIELDBOOK: SDR33, 2203
 G: \T3NR4W\15A
 C: \SWA\TIE\T3NR4W\01SUM

CREW: BS-SB-SA-BD
 DRAWN BY: SW AUSTIN
 APPROVED: LL AUSTIN