

CERTIFIED LAND CORNER

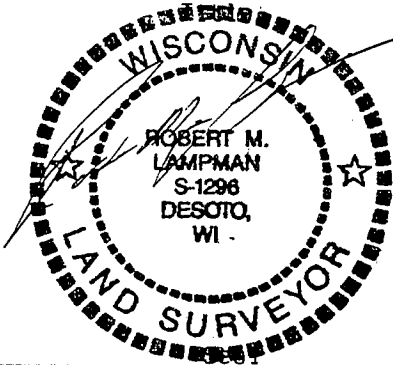
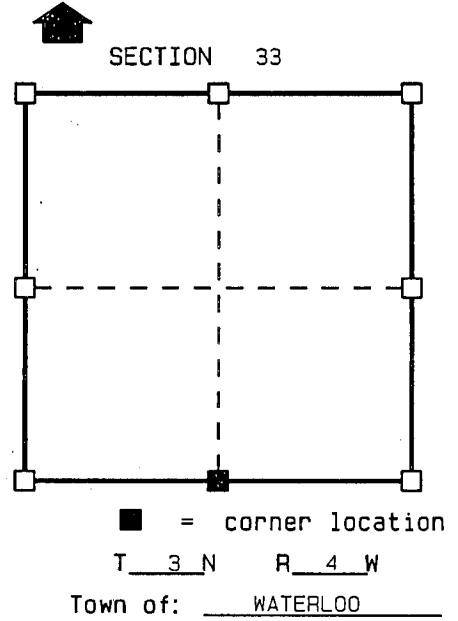
STATE OF WISCONSIN)
 COUNTY OF GRANT) S.S.

CERTIFICATE

I, ROBERT M. LAMPMAN, do hereby certify that on the 10th day of JUNE 1997, I found (evidence) ~~(no evidence)~~ of the S 1/4 corner of SECTION 33, T 3 N, R 4 W, Fourth Principal Meridian, and I re-established said corner according to the Wisconsin Statutes as shown and described hereon.

Dated this 27th day of FEBRUARY 1998

ROBERT M. LAMPMAN R.L.S. S-1296



History of original corner establishment:

ORIGINAL CORNER ESTABLISHED BY LUCIUS LYON IN 1832.

Description of corner evidence found:

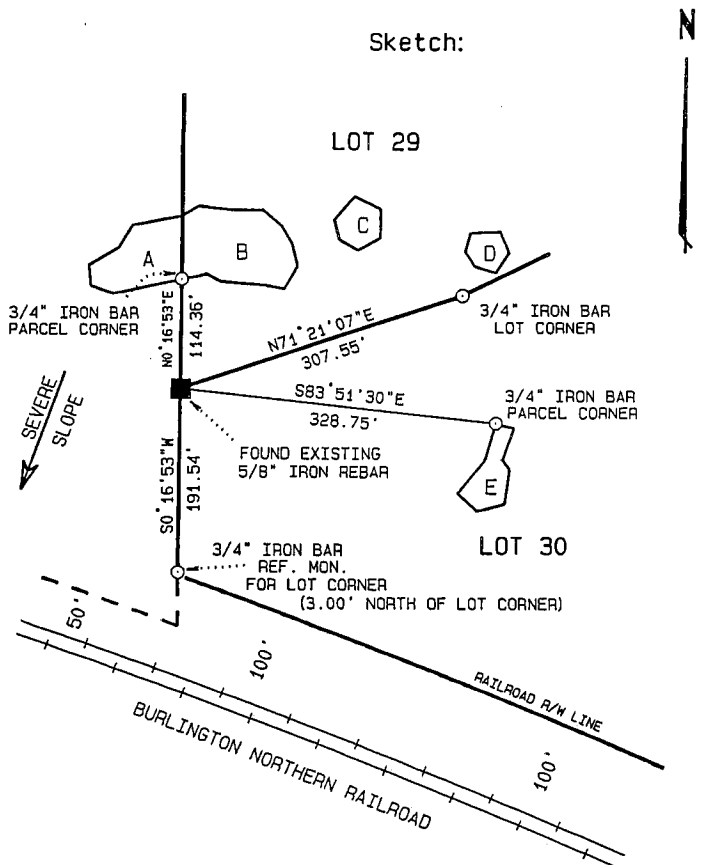
- PAUL C. BRASHAW SET A 5/8" IRON BAR AT THE CORNER. (C.S.M. NO. 215)
- LARRY L. AUSTIN SHOWS IRON ROD FOUND IN 1988. (SURVEY PLAT)
- RICHARD D. TALARCZYK SHOWS 5/8" SOLOD ROUND IRON ROD FOUND IN 1995. (C.S.M. NO. 401)
- FOUND 5/8" IRON REBAR AT CORNER.
- MEASURED 2624.70' TO BUGGY AXLE AT SE CORNER. (RECORDED AS 2627.72')

Description of corner and witness monuments, references and accessories used to perpetuate the original or re-established location of this corner:

Witnesses to corner location:

ROBERT M. LAMPMAN
SHAWN R. TORGERSON
JASON W. DOESECKLE

Sketch:



NOTES:

"A" - "E" REPRESENT PARCELS FROM EXISTING SURVEY PREPARED FOR THE STATE HISTORICAL SOCIETY. SAID PARCELS CONTAIN APPARENT INDIAN MOUNDS. ALL CORNERS OF SAID PARCELS ARE MONUMENTED WITH 3/4" IRON BAR.

LOT 29 & LOT 30 REPRESENT A C.S.M. YET TO BE RECORDED.

MONUMENTS SHOWN WERE CHOSEN AS TIES DUE TO THE STEEP SLOPE (BLUFF SIDE) ON WHICH THE CORNER IS LOCATED.

DRAWING NOT TO SCALE.

SURVEY CONTROL ORDER

Horizontal
Vertical

WISCONSIN COORDINATE SYSTEM

Corner	East (X)	North (Y)	Elevation (Z)	Zone
Control Sta. Name				