

CERTIFIED LAND CORNER

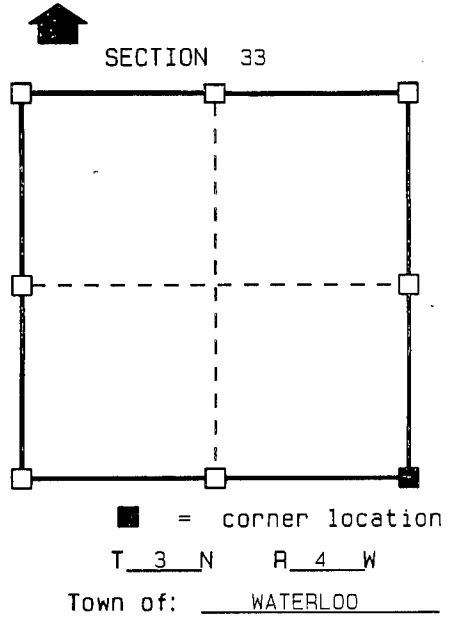
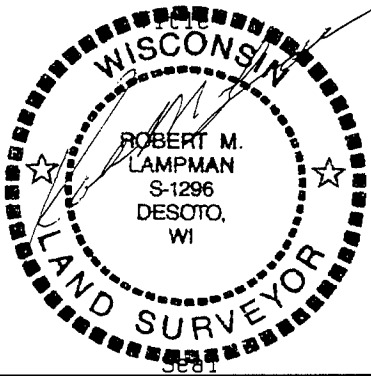
STATE OF WISCONSIN )  
 COUNTY OF GRANT ) S.S.

CERTIFICATE

I, ROBERT M. LAMPMAN, do hereby certify that on the 23rd day of JUNE 1997, I found (evidence) (~~no evidence~~) of the SE corner of SECTION 33, T3 N, R4 W, Fourth Principal Meridian, and I re-established said corner according to the Wisconsin Statutes as shown and described hereon.

Dated this 27th day of JUNE 1997

ROBERT M. LAMPMAN R.L.S. S-1296



History of original corner establishment:

ORIGINAL CORNER ESTABLISHED BY L.LYON IN 1832.

Description of corner evidence found:

FOUND BUGGY AXLE AND 3/8" IRON BAR IN CONCRETE AT CORNER AREA.  
 COURT HOUSE RECORDS CONTAIN SURVEYS TIED TO EACH OF THE TWO MONUMENTS FOUND.  
 ACCEPTED BUGGY AXLE, AS A GREATER NUMBER OF SURVEYS WERE TIED TO THE AXLE.

Description of corner and witness monuments, references and accessories used to perpetuate the original or re-established location of this corner:

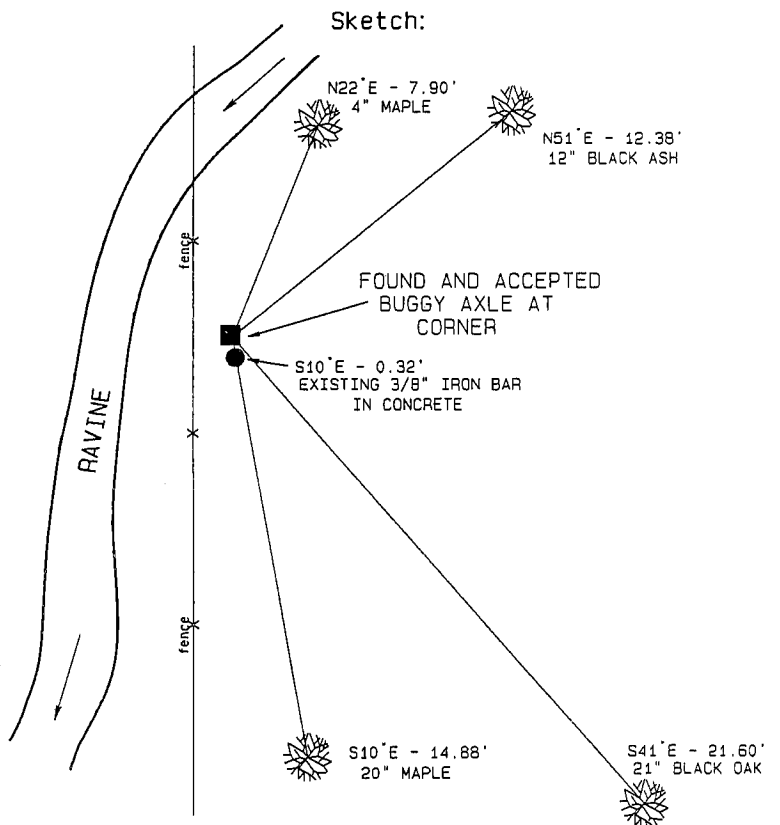
Witnesses to corner location:

ROBERT M. LAMPMAN

SHAWN R. TORGERSON

BEARINGS ARE APPROXIMATE MAGNETIC.  
 SET SPIKE AT BASE OF EACH TREE.  
 MADE NO BLAZES.

DRAWING NOT TO SCALE



SURVEY CONTROL ORDER

Horizontal
Vertical

WISCONSIN COORDINATE SYSTEM

Corner	East (X)	North (Y)	Elevation (Z)	Zone
Control Sta. Name				