

U. S. PUBLIC LAND SURVEY MONUMENT RECORD

INSTRUCTIONS :

This record shall show the location of the corner and shall include all of the following nine elements (a through i).

- (a) Identify the corner by reference to the U.S. public land survey system.

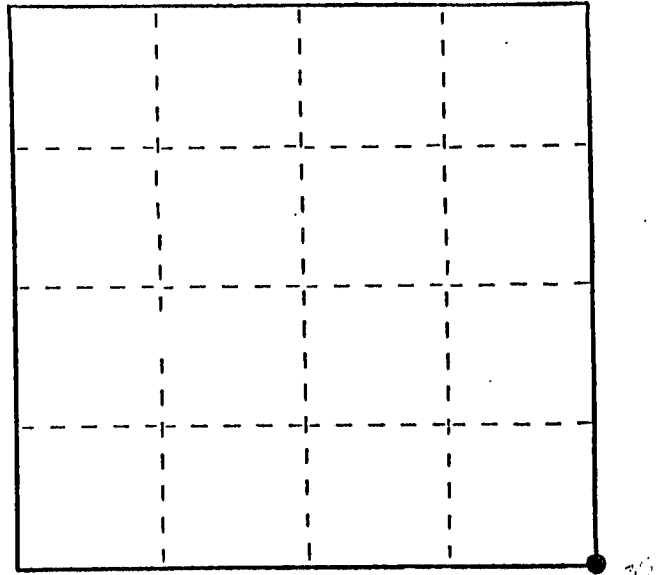
● = Corner monument restored.

SE Corner of Section 35

T 3 N R 4 W

Town of Waterloo

Grant Co., Wis.



Section 35 T3N R4W

- (b) Describe any record evidence, monument evidence, occupational evidence, testimonial evidence or any other material evidence you considered, and whether the monument was found or placed.

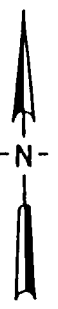
Corner was originally set by Lucius Lyon in the 1st 1/4 of 1833. Approximately 1980, a Certified Survey Map by Michael McMillan, Registration # S-1179, showed the corner to be a railroad tie fence corner. Later, (April, 1982), Paul Brashaw, RLS, did 2 plats of survey in this area, showing a 3/4" X 36" iron monument set. After a search of the area, concentrated around a railroad tie fence corner, did not produce the iron, I phoned Mr. Brashaw in Illinois and got the description of the stone called at the S1/4 corner of this section to retrace the survey. As directed, using the largest stone at the S1/4 fence corner, and a line of iron bars to the south, I placed the corner at what I felt was Mr. Brashaw's location, approximately 1' NW of the railroad tie.

(A thorough search with a backhoe failed to produce any other evidence.)

- (c) In the plan view drawing below, provide reference ties to at least 4 witness monuments, or, if the location is within a municipality, to at least 2 witness monuments. (Witness monuments shall be made of concrete, natural stone, iron or other equally durable material.) Describe witness monuments.

- (d) Show a plan view drawing depicting the relevant monuments and reference ties which is sufficient in detail to enable accurate relocation of the corner monument if the corner monument is disturbed. Indicate north.

Scale: 1" = 40'



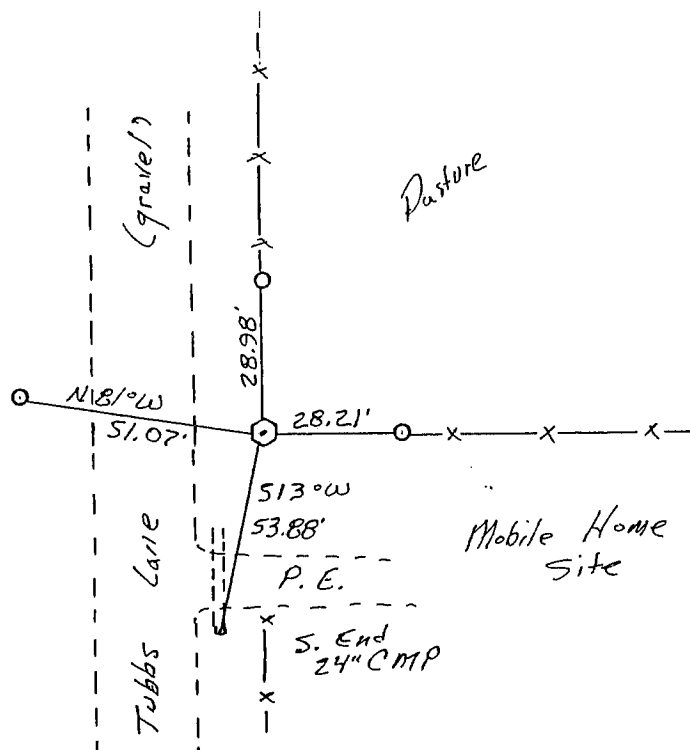
(Bearings shown are for orientation purposes only)



SEP. 13 1989

Ravine

Corner is 2" X 30" aluminum Wis. Dept of Transportation monument, also sign and post



(e) Describe any material discrepancy between the location of the corner as restored or reestablished and the location of that corner as previously restored or reestablished by distance and direction. Show the discrepancy on the plan view drawing under (d), above. Show the distances between the corner as previously restored or reestablished and (1) the corner as restored or reestablished, and (2) to at least 2 of the witness monuments shown on the drawing in (d), above.

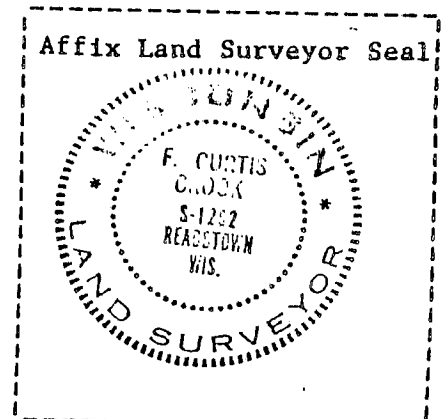
NONE

(f) Was the corner restored through acceptance of (1) an obliterated evidence location, or, (2) a found perpetuated location?

Obliterated evidence location

(g&h) Was the corner reestablished through lost corner proportionate methods? If so, show the method, including the directions and distances to other public land survey corners used as evidence or used for proportioning in determining the corner location?

NO



(1) I, F. Curtis Crook
(type or print name) certify that the corner location shown on this record was determined by me or under my direction and control and that this U.S. Public Land Survey Monument Record is correct and complete to the best of my knowledge and belief.

F. Curtis Crook

S-25-89