

U. S. PUBLIC LAND SURVEY MONUMENT RECORD

INSTRUCTIONS: This record shall show the location of the corner and shall include all of the following nine elements (a through i).

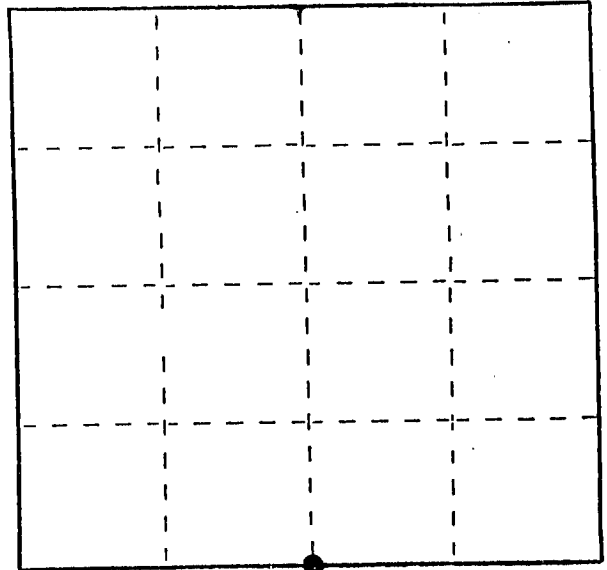
- (a) Identify the corner by reference to the U.S. public land survey system.
 ● = Corner monument restored.

S1/4 Corner of Section 36

T 3 N R 4 W

Town of Waterloo

Grant Co., Wis.



Section 36 T3N R4W

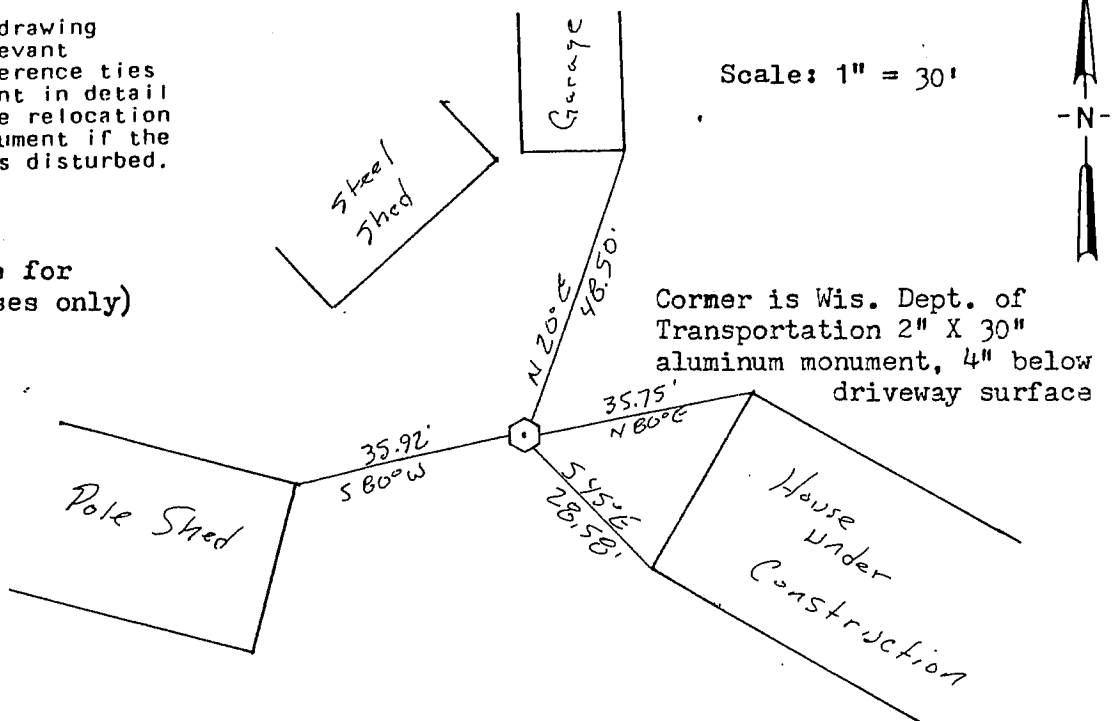
- (b) Describe any record evidence, monument evidence, occupational evidence, testimonial evidence or any other material evidence you considered, and whether the monument was found or placed.

Originally set by Lucius Lyon in the 1st 1/4 of 1833. No pertinent surveys were found recorded since. Due to common ownership, there is no evidence of the location at the immediate site. The description of the supper club, not far to the west, was retraced by the occupation lines, and the EDM traverse of the area put the corner at this location.

- (c) In the plan view drawing below, provide reference ties to at least 4 witness monuments, or, if the location is within a municipality, to at least 2 witness monuments. (Witness monuments shall be made of concrete, natural stone, iron or other equally durable material.) Describe witness monuments.

- (d) Show a plan view drawing depicting the relevant monuments and reference ties which is sufficient in detail to enable accurate relocation of the corner monument if the corner monument is disturbed. Indicate north.

(Bearings shown are for orientation purposes only)



RECEIVED
 SEP 13 1989

SEP 13 1989

(e) Describe any material discrepancy between the location of the corner as restored or reestablished and the location of that corner as previously restored or reestablished by distance and direction. Show the discrepancy on the plan view drawing under (d), above. Show the distances between the corner as previously restored or reestablished and (1) the corner as restored or reestablished, and (2) to at least 2 of the witness monuments shown on the drawing in (d), above.

NONE

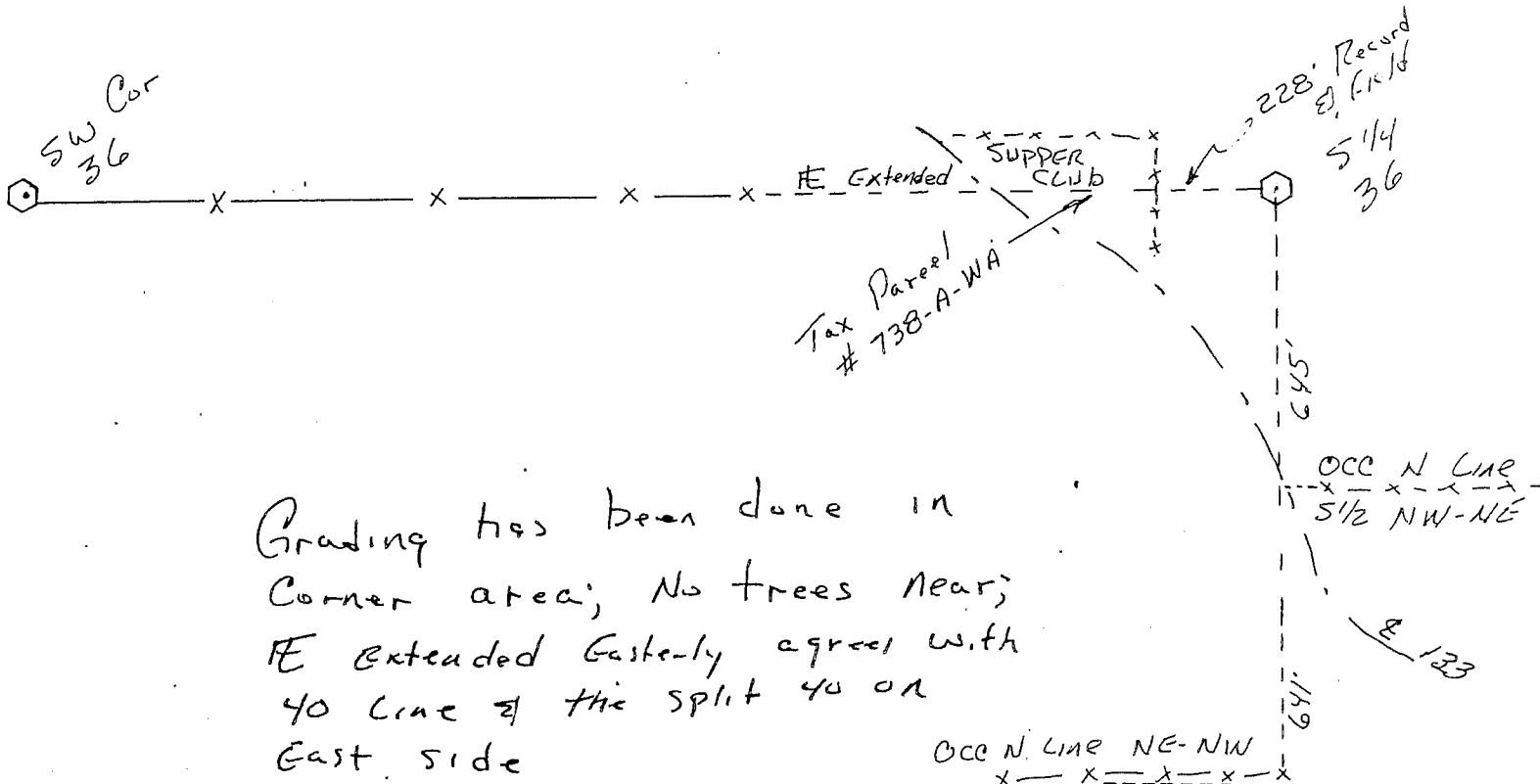
(f) Was the corner restored through acceptance of (1) an obliterated evidence location, or, (2) a found perpetuated location?

Obliterated evidence location

(g&h) Was the corner reestablished through lost corner proportionate methods? If so, show the method, including the directions and distances to other public land survey corners used as evidence or used for proportioning in determining the corner location?

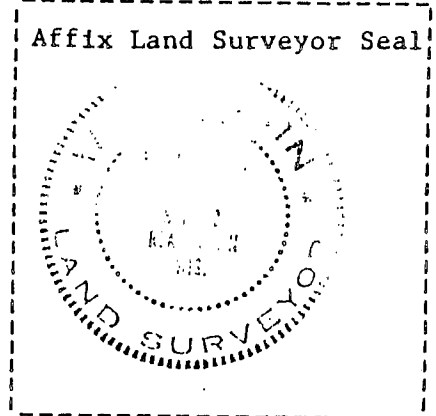
NO

Scale 1" = 400'



Grading has been done in corner area; No trees near; E Extended Easterly agrees with 40 line of the split 40 on East side

Hand excavation shows only discolored soil from excavation, Possible drain oil site, etc.



(1) I, F. Curtis Crook (type or print name) certify that the corner location shown on this record was determined by me or under my direction and control and that this U.S. Public Land Survey Monument Record is correct and complete to the best of my knowledge and belief.

F. Curtis Crook 5-25-89
Sketch added 6-6-89