

# GRANT COUNTY CERTIFIED LAND CORNER

CORNER NUMBER 120

**CERTIFICATE:**

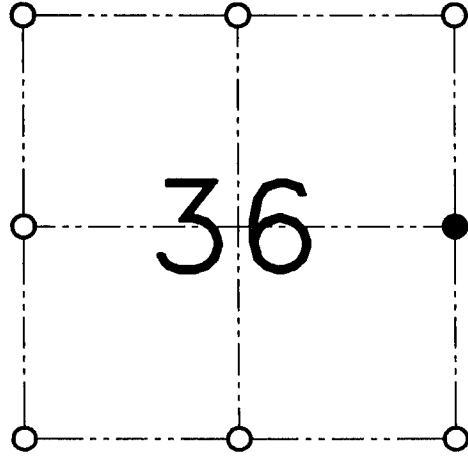
I, Larry L. Austin, do hereby certify that the corner location on this record was determined by me and/or under my direct supervision that this U.S. public land survey monument record is correct and complete to the best of my knowledge and belief.

Dated this 21st day of March, 2001

*Larry L. Austin*  
Larry L. Austin, S-1903



SEAL



● = CORNER LOCATION

SECTION 36, T 3 N R 4 W  
TOWN OF WATERLOO

**HISTORY OF ORIGINAL CORNER ESTABLISHMENT:**

Corner was originally set in 1832 by Lucius Lyon.  
No other record of the corner was found.

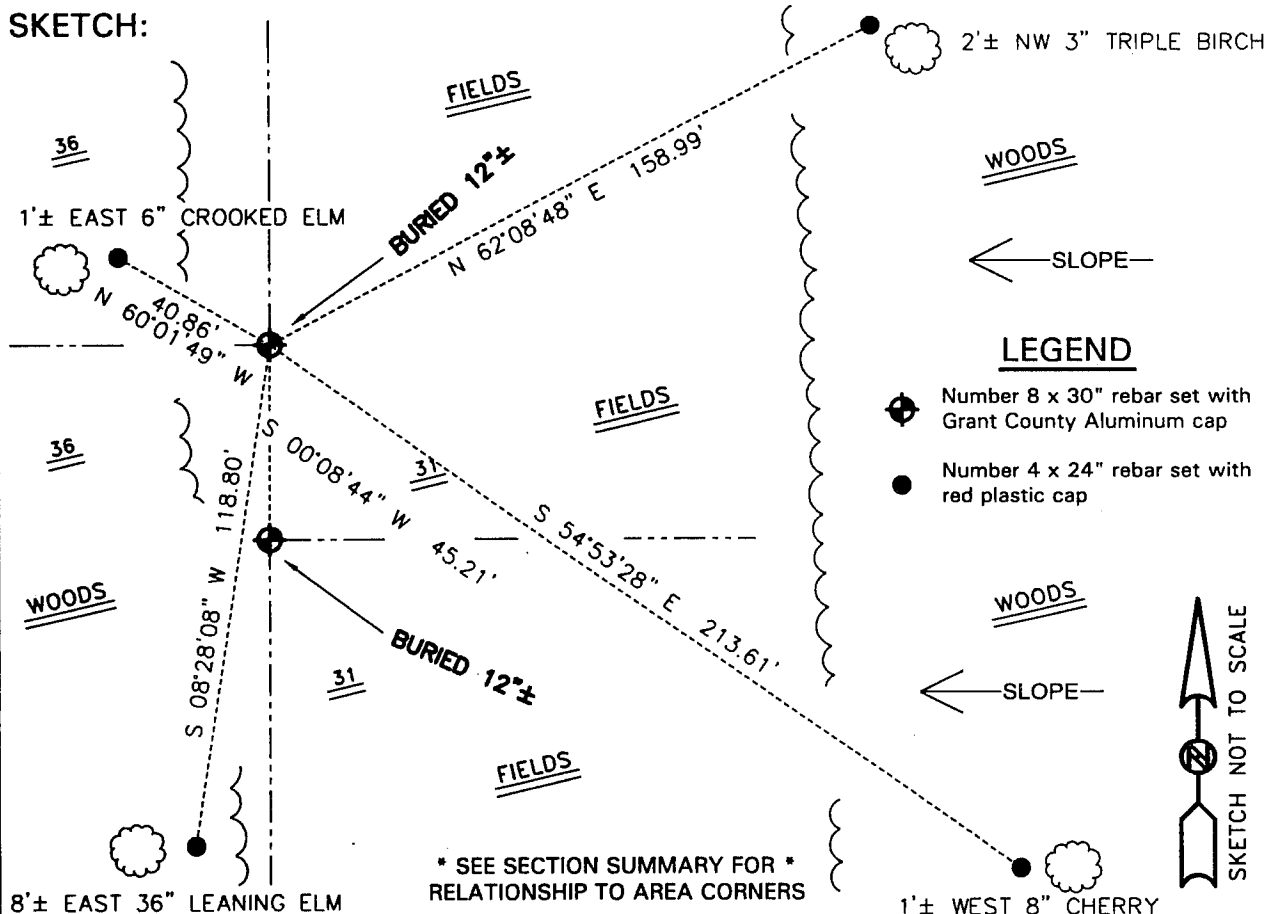
**DESCRIPTION OF CORNER EVIDENCE FOUND:**

I reset the corner proportionately and online with the Northeast and Southeast corners of Section 36. Verified this location using EDM & GPS methods.

**DESCRIPTION OF CORNER AND WITNESS MONUMENTS**

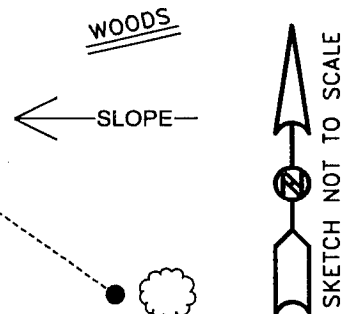
references and accessories used to perpetuate the original or re-established location of this corner.

**SKETCH:**



**LEGEND**

- ◆ Number 8 x 30" rebar set with Grant County Aluminum cap
- Number 4 x 24" rebar set with red plastic cap



**AUSTIN ENGINEERING, LLC**  
4211 HWY 81 E, LANCASTER, WI 53813  
PHONE 608-723-6363 FAX 608-723-6702

FIELDBOOK: SDR33, 2040  
G:\T3NR3W\29  
G:\SWA\TIE\T3NR4W\120

DRAWN BY: SW AUSTIN  
APPROVED: LL AUSTIN  
CREW: BS-SB-SA-TF  
SHEET 1 OF 1